

**NEWMARK**  
ZIMMER

# 16041 Foster St Overland Park Kansas

---

60,400 SF Headquarters Campus  
Available for Sale

**\$6,999,999**

## Contact

Michael L. VanBuskirk, SIOR, CCIM, CRE  
Chris S. Robertson, CCIM  
Thomas Gentry  
Raegen Kersey, CCIM



# Property Highlights

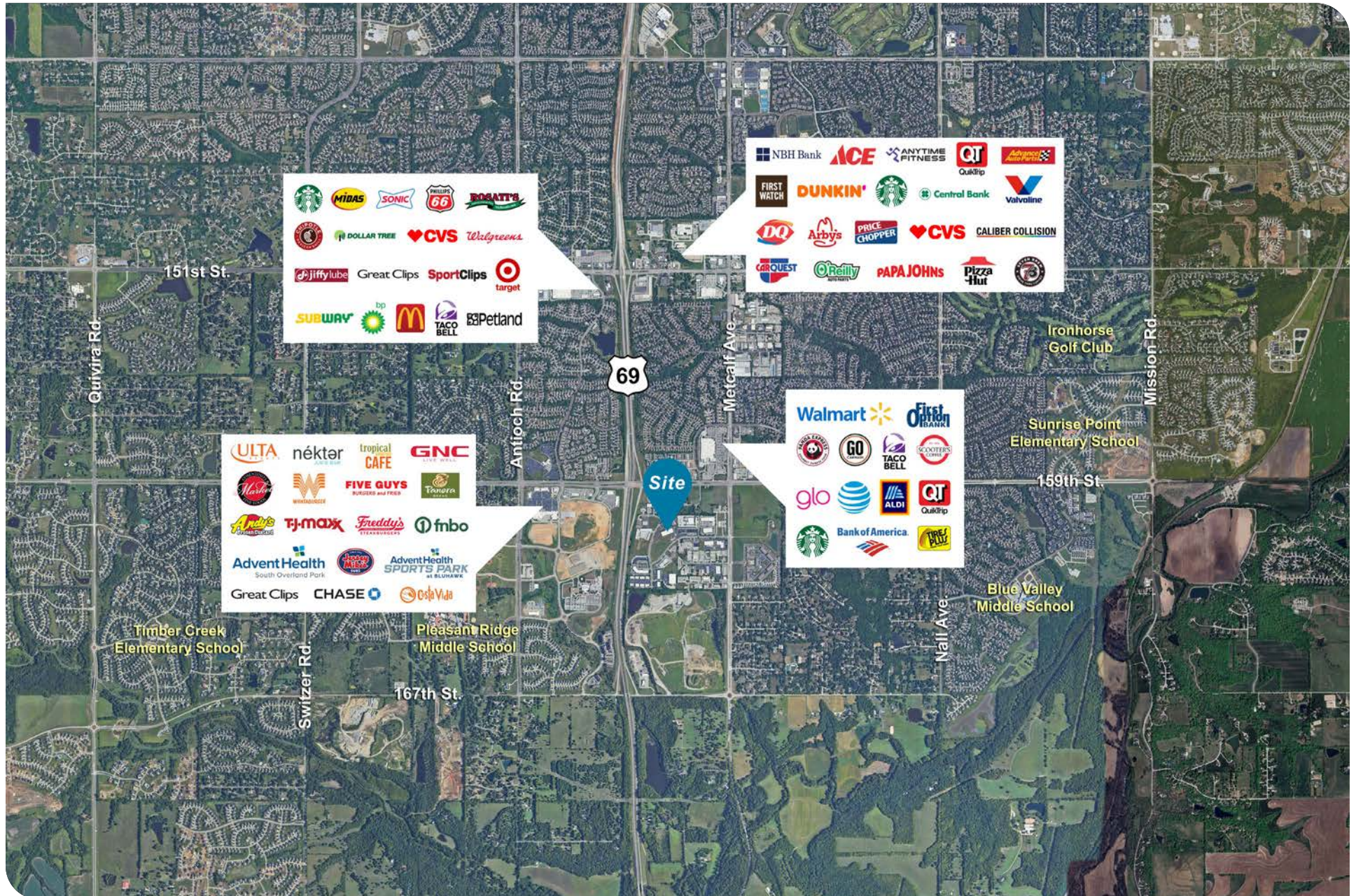
- Owner / user opportunity
- 60,400 square feet
- Less than one mile to Bluhawk, one of the largest entertainment destinations in the Kansas City metro
- Easy access to 169 Highway
- 12.47 acre site
- 3.80 (±) additional acres for future building expansion or development
- Built in 1996, second building built in 2007
- Layout includes private offices and open-plan layout
- Property features multiple conference rooms, training room, large dining space and production area
- Parking ratio of 2.78/1,000 sf
- Sale price \$6,999,999



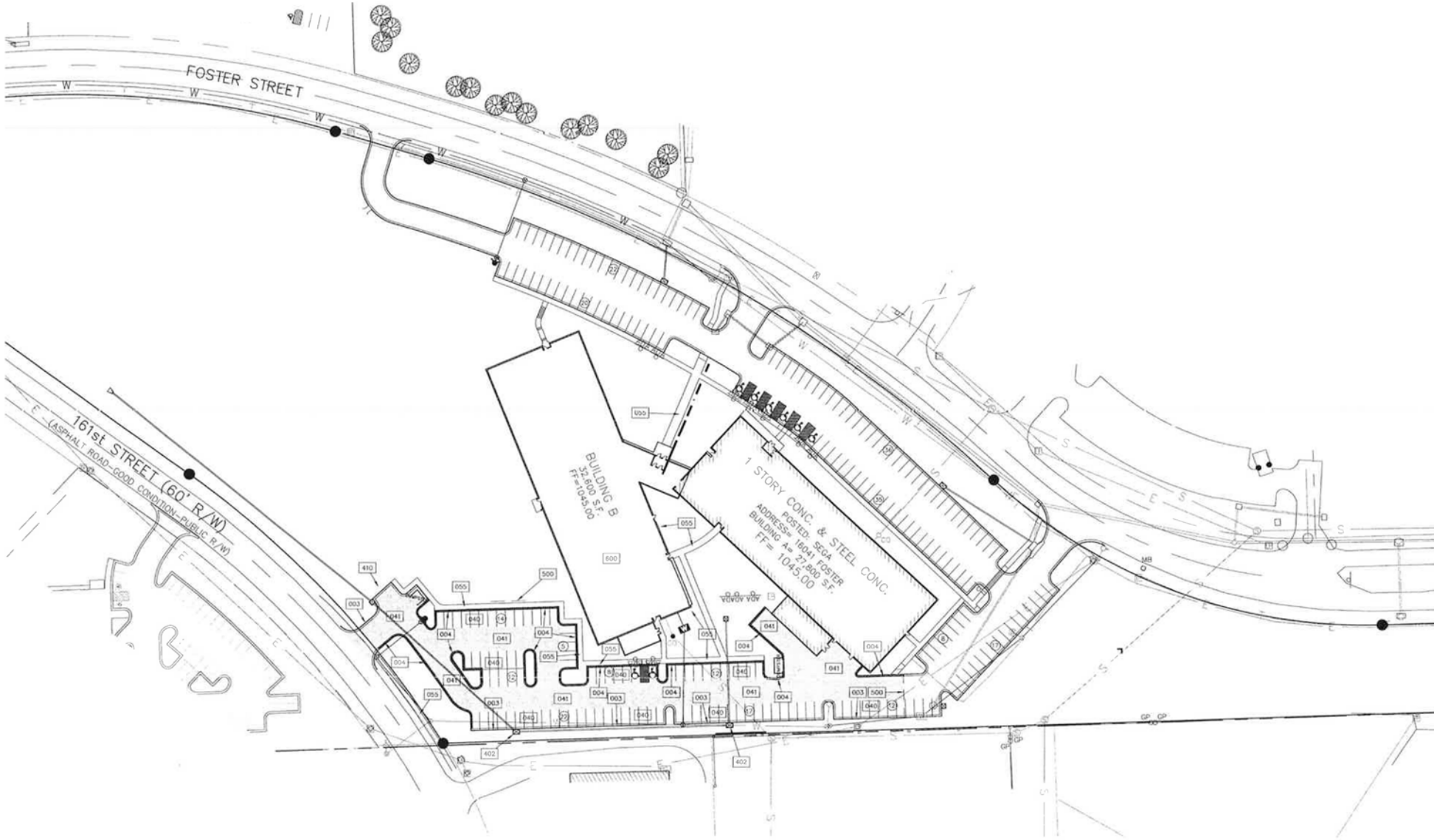
# Property Parcel Aerial



# Location Aerial



# Site Plan



# Building Plan



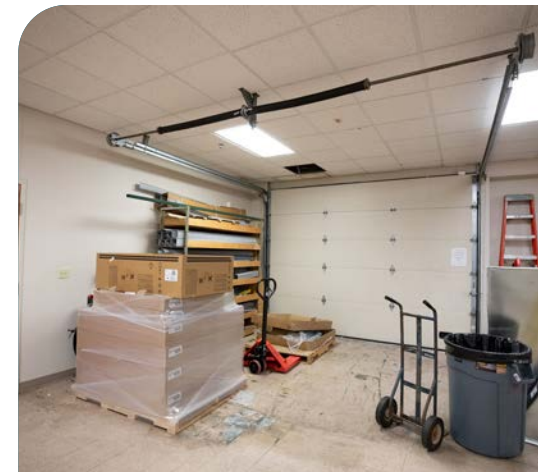
Building 1 - 1st Floor

Building 2 - 1st Floor









# Nearby Amenities

**Bluhawk is Kansas City's largest mixed-use project by a single developer with one million square feet.**

Located in Overland Park, Kansas, and created by Kansas City's century-old, family-owned company Price Brothers, Bluhawk is 277 acres of mixed-use development. But even more than that, it's a serendipitous, first-of-its-kind sum of retail, dining, multifamily, office, healthcare, entertainment, and youth sports, all of which is anchored by the state-of-the-art AdventHealth Sports Park at Bluhawk. Step outside the sports park and immediately step into a lifestyle center; it is the apex of adjacency and the absolute in accessibility. For the special day and the everyday, the sports tournament and the shopping trip, there's never been anything like it before, in Kansas or anywhere else. And it is therefore uniquely well-positioned to take Overland Park, over the top. In short, it represents the best of the Kansas City area and its brightest future.



**440k**  
**SQUARE FEET**

ADVENTHEALTH SPORTS  
PARK AT BLUHAWK

**670k**  
**SQUARE FEET**

RETAIL, RESTAURANT,  
AND ENTERTAINMENT

**200k**  
**SQUARE FEET**

APPROVED HOTEL SPACE  
350 KEYS TOTAL



**NEWMARK**  
ZIMMER

## Contact

---

**Michael L. VanBuskirk, SIOR, CCIM, CRE**  
*Vice Chairman, Principal*  
816-512-1010  
mvanbuskirk@nzimmer.com

**Chris S. Robertson, CCIM**  
*Executive Managing Director, Principal*  
816-512-1014  
crobertson@nzimmer.com

**Thomas Gentry**  
*Director*  
816-268-4249  
tgentry@nzimmer.com

**Raegen Kersey, CCIM**  
*Associate*  
816-512-1005  
rkersey@nzimmer.com