

Landmark Office Building

205 S. Whiting Street
Alexandria, VA 22304



HIGHLIGHTS

- Just off I-395 at the Duke Street Exit close to future location of Inova Alexandria Hospital
- Free surface and garage parking
- All-inclusive pricing
- On-site property management and maintenance
- Snack shop in the lobby as well as several medical offices and retail businesses within the building, such as hair salon, gym and payroll processing

AVAILABLE SUITES

- Suite 406 1,650 SF \$5,085/month
- Suite 500 6,130 SF \$18,900/month
- Suite 602 1,330 SF \$4,100/month

COMING 2026 – MEDICAL SPEC SUITES
WITH 1 TO 6 EXAM ROOM OPTIONS

PRICING AND TERMS

- Starting at \$37.00/sf, full service, including daily limited cleaning (price based on limited build out)
- 5 – 10 years



CONTACT AND FURTHER INFORMATION

Cecilia Gondor, Managing Member

L&M Management LLC

101 S. Whiting Street, Suite 113

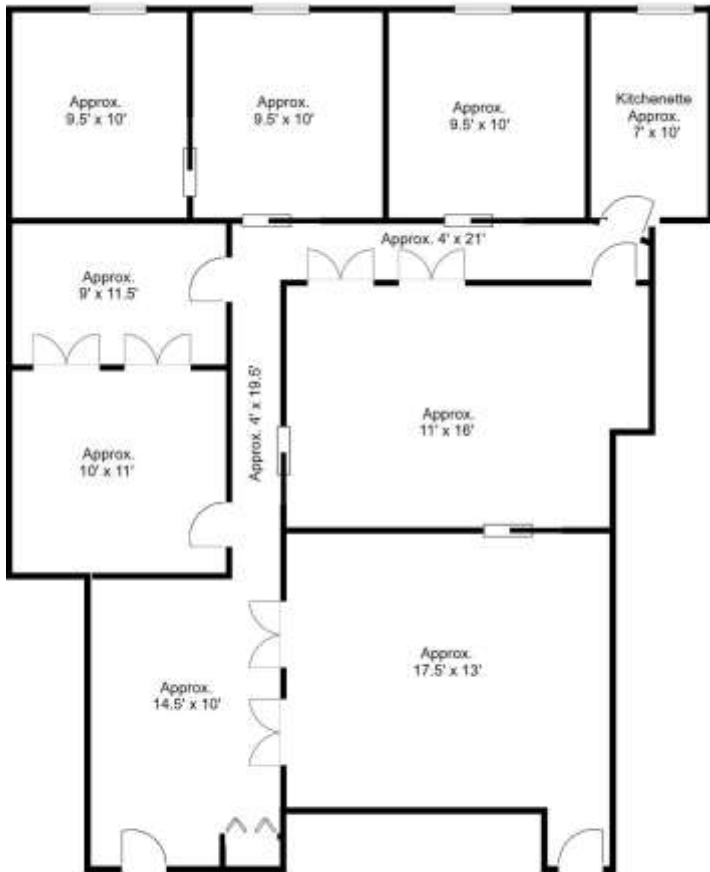
Alexandria, VA 22304

(w) (703) 751-5100

cgondor@rentatlandmark.com

www.LeaseAtLandmark.com

Pricing information as of 1/2026 and is subject to change



LANDMARK OFFICE BUILDING
 Suite 602
 1,330 square feet
 205 S Whiting Street
 Alexandria, VA 22304

SUITE 602

1,330 SF

\$4,100/month

This space can be combined with Suite 601

205 S Whiting Street

Alexandria, VA 22304

This top-floor space is excellent for collaboration!
Large meeting rooms are surrounded by smaller offices with wide-opening double wood doors to expand or separate areas. The suite has its own HVAC system with 2 thermostats and a kitchenette. Move in ready!



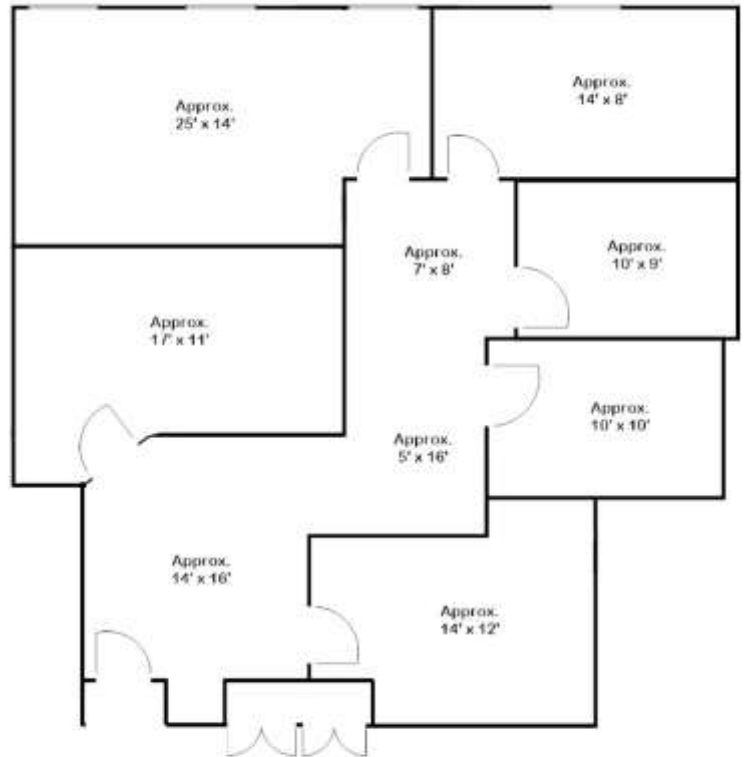
Pricing information as of 1/2026 and is subject to change

SUITE 406

1,650 SF

\$5,085/month

Excellent layout for administrative work, with built-in workstations in a large open office, plus three private offices, generous reception area and conference/break room with refrigerator and counter.



rentable square feet include a core factor of 5%

LANDMARK OFFICE BUILDING
Suite 406
1,650 Square Feet
205 S. Whiting St.
Alexandria, VA 22304

SUITE 500

6,000 SF

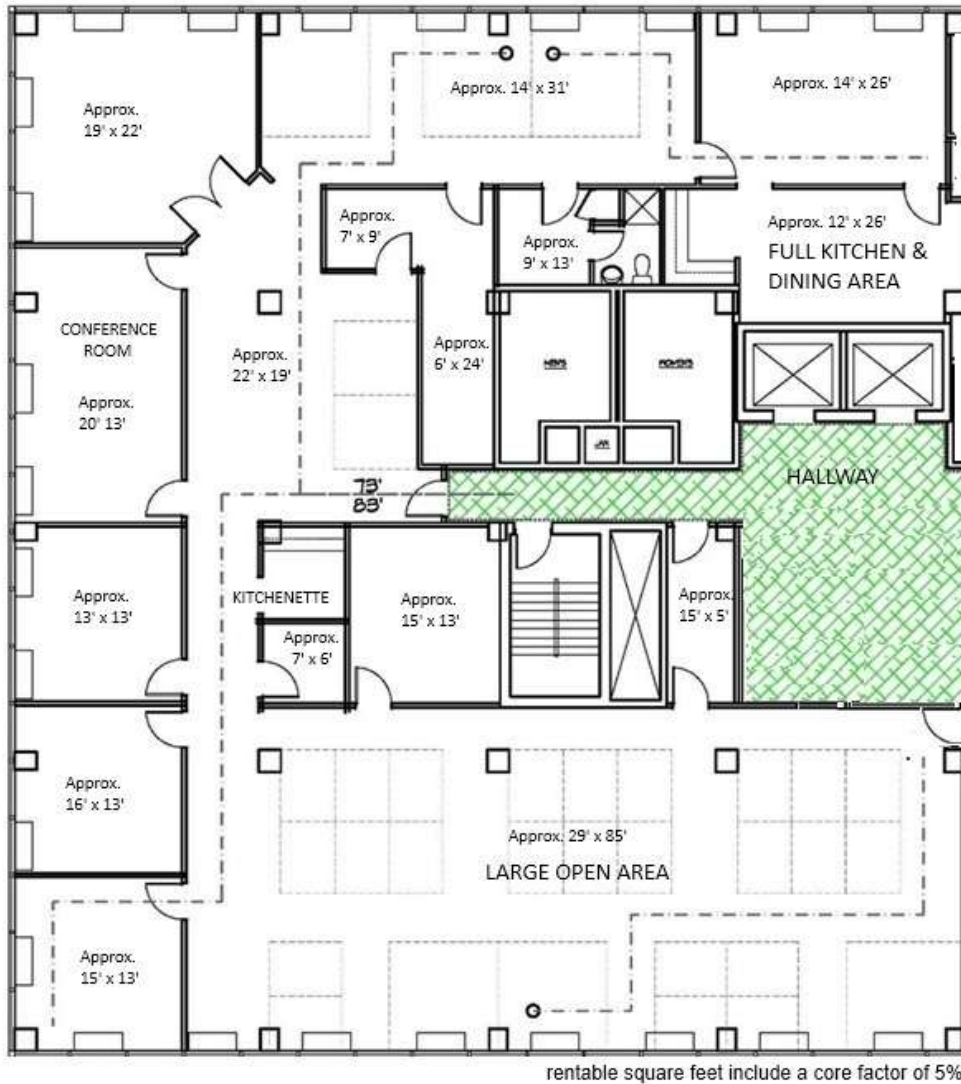
\$18,500/month – can be subdivided

This large administrative office includes an expansive open area as well as a medium-sized co-working area, full kitchen and dining area as well as a separate kitchenette. There is a conference room and extra-large corner executive office. The restroom inside the suite includes a shower. Lot of areas for storage. Several entrances from the hallway allow for easy sub-divisions.



Pricing information as of 1/2026 and is subject to change

SUITE 500 (continued)



LANDMARK OFFICE BUILDING
205 S. Whiting Street
Alexandria VA 22304
6,000 square feet
Suite 500

(can be sub-divided)

Pricing information as of 1/2026 and is subject to change

CONTACT AND FURTHER INFORMATION – (703) 751-5100 -- www.LeaseAtLandmark.com