

**AVISON
YOUNG**

Hazelwood
Green

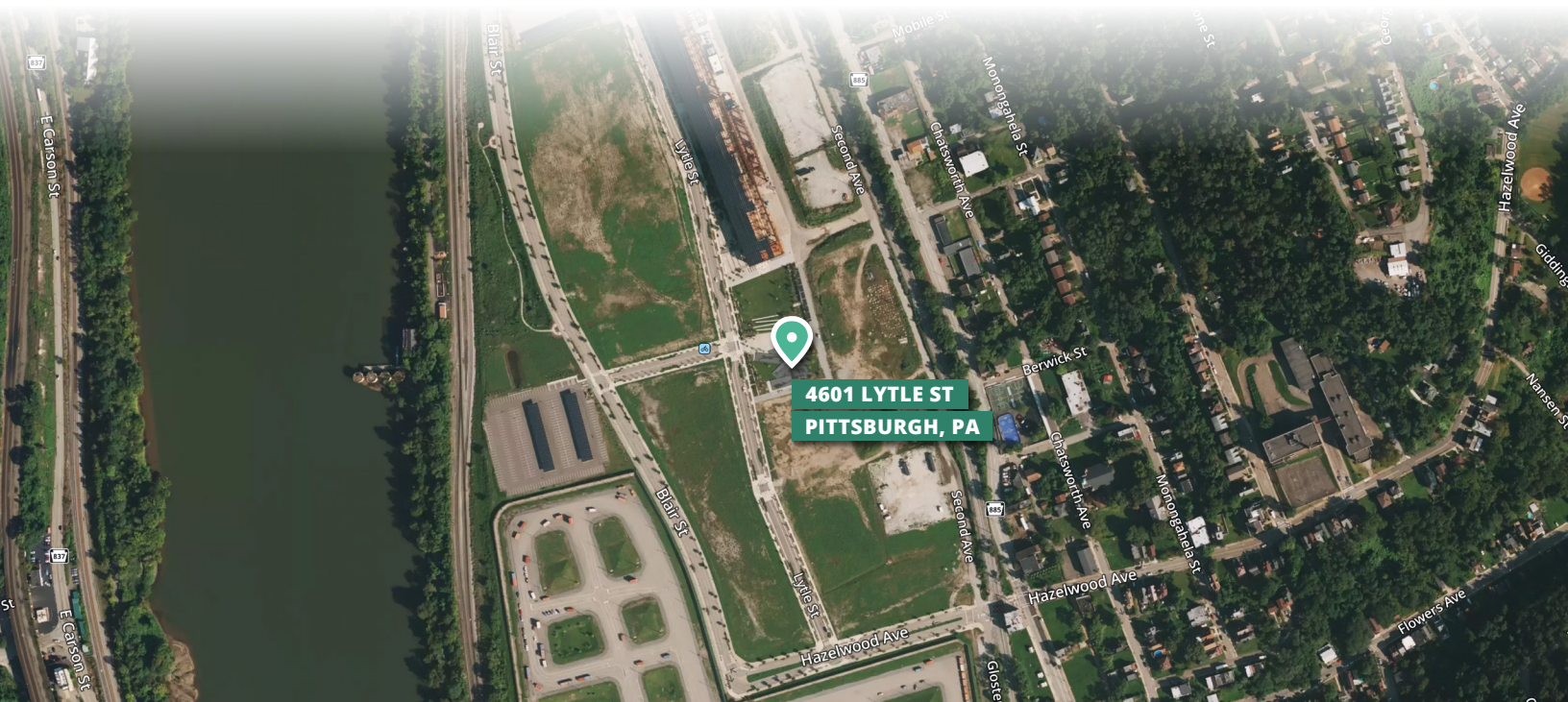
For Lease

4601 Lytle Street
Pittsburgh, PA 15207

Exciting retail opportunity at Hazelwood Green.

1,400 – 2,000 sf of ground-floor retail space





Property overview

- Unique retail opportunity at the forefront of CMU's Robotics Innovation Center and Hazelwood Green development
- 1,400 – 2,000 sf of ground-floor retail space
- Perfect for café, luncheonette, or boutique eatery
- Adjacent to University of Pittsburgh's Pitt BioForge and the Mill 19 research and development hub
- Proximity to the Round House, a co-working space for 21st Century researchers and entrepreneurs
- Future developments include:
 - Lytle Street Apartment Building, Pittsburgh Steelers multi-sport facility, and two acres of outdoor green space for events and community use

For more info,
please contact:



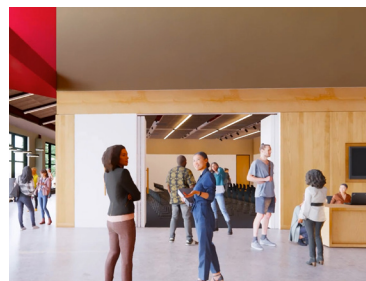
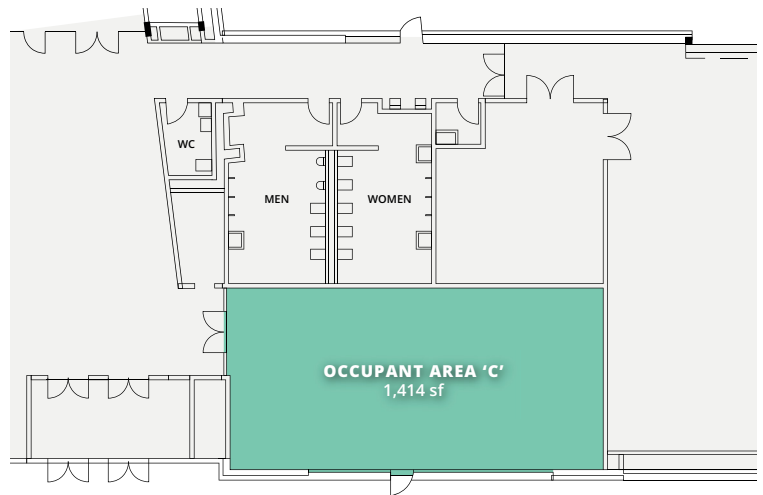
Michael B. Downey, Principal
+1 412 944 2135
michael.downey@avisonyoung.com



Maggie McGinley, Associate
+1 412 944 2137
maggie.mcginley@avisonyoung.com

Retail Space For Lease

4601 Lytle Street, Pittsburgh, PA 15207



For further information

Michael B. Downey, Principal
+1 412 944 2135
michael.downey@avisonyoung.com

Maggie McGinley, Associate
+1 412 944 2137
maggie.mcginley@avisonyoung.com

avisonyoung.com

Visit us at
avisonyoung.com

**For more information,
get in touch.**

MICHAEL B. DOWNEY, SIOR

Principal, Vice President
M +1 412 944 2135
steven.kohn@avisonyoung.com

MAGGIE MCGINLEY

Associate
D +1 412 944 2137
maggie.mcginley@avisonyoung.com