

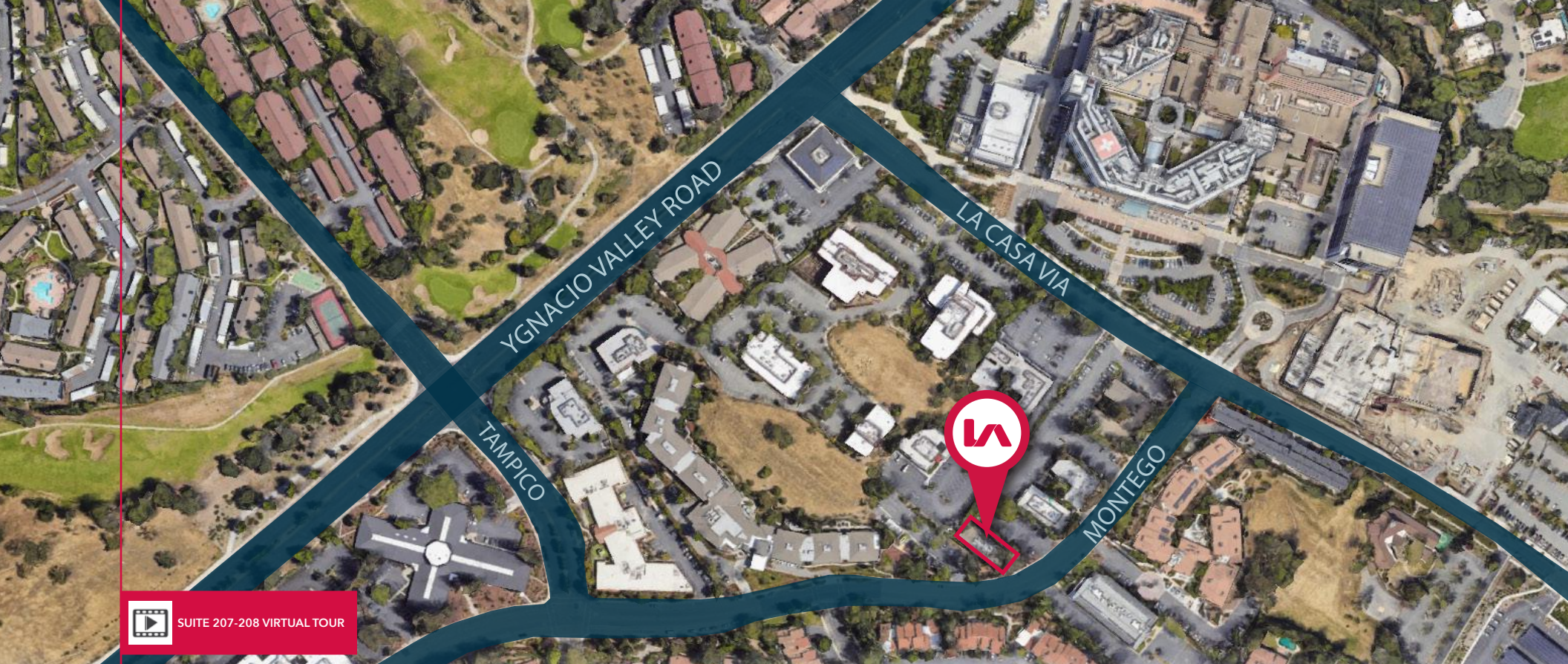


MUIR MEDICAL PARK

900±SF - 1,958±SF MEDICAL SPACE FOR LEASE

130 LA CASA VIA, WALNUT CREEK, CA 94598

LOCAL EXPERTISE. INTERNATIONAL REACH. WORLD CLASS.



PROPERTY HIGHLIGHTS



Property type: Medical Suites



Suite 207-208: 900±SF - 1,958±SF



Adjacent to John Muir Hospital



Walking distance to many retail amenities



Close proximity to blood draw clinics and imaging centers



Property is situated off Ygnacio Valley Road in the heart of Walnut Creek



Very affluent region with good demographics

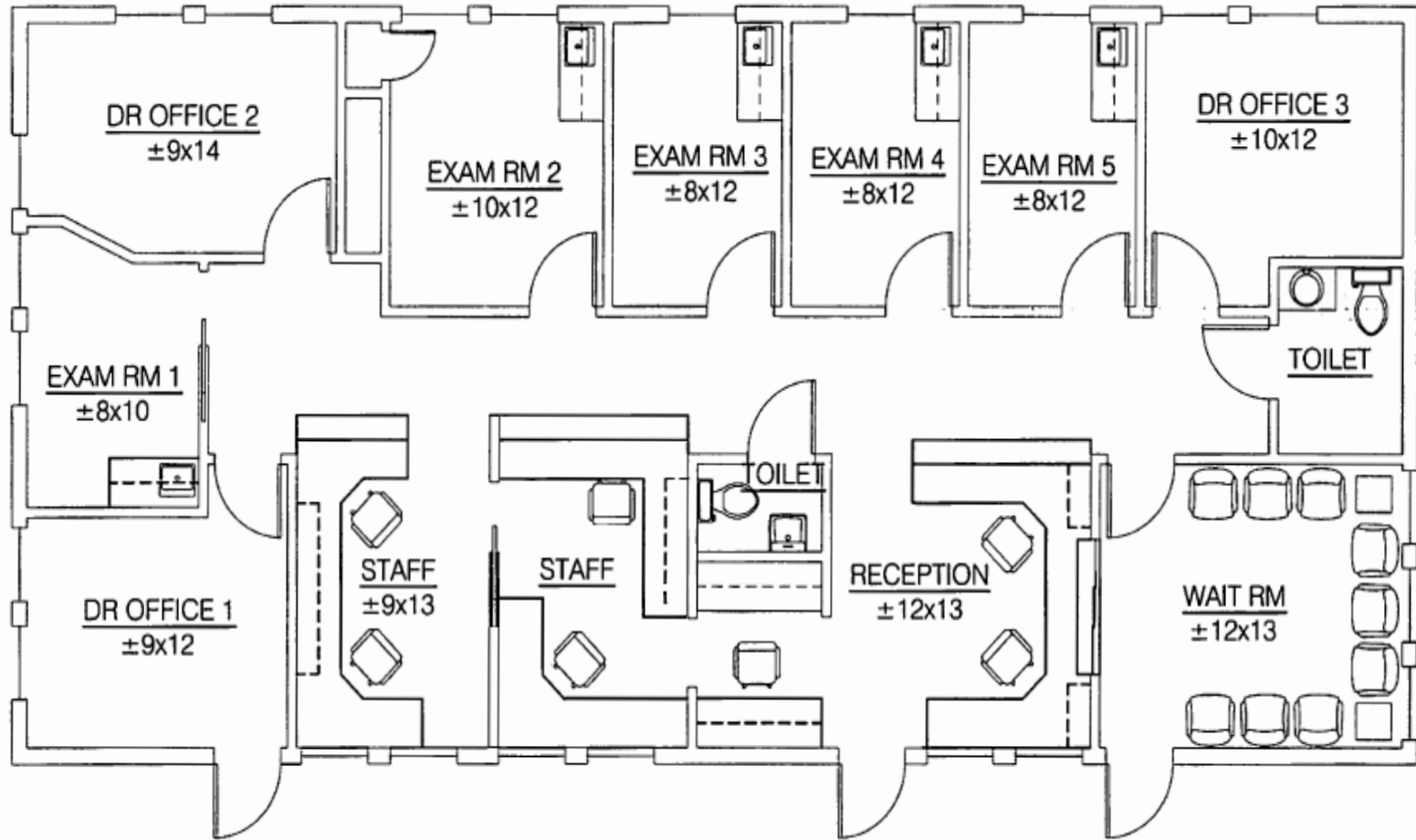


Lease rate: \$2.25/SF + NNN
NNN's only \$0.65/SF/month!

130
LA CASA VIA

Suites 207-208: 1,958±SF

- Consisting of 5 exam rooms, 3 doctor's offices, waiting/reception area, and private restrooms

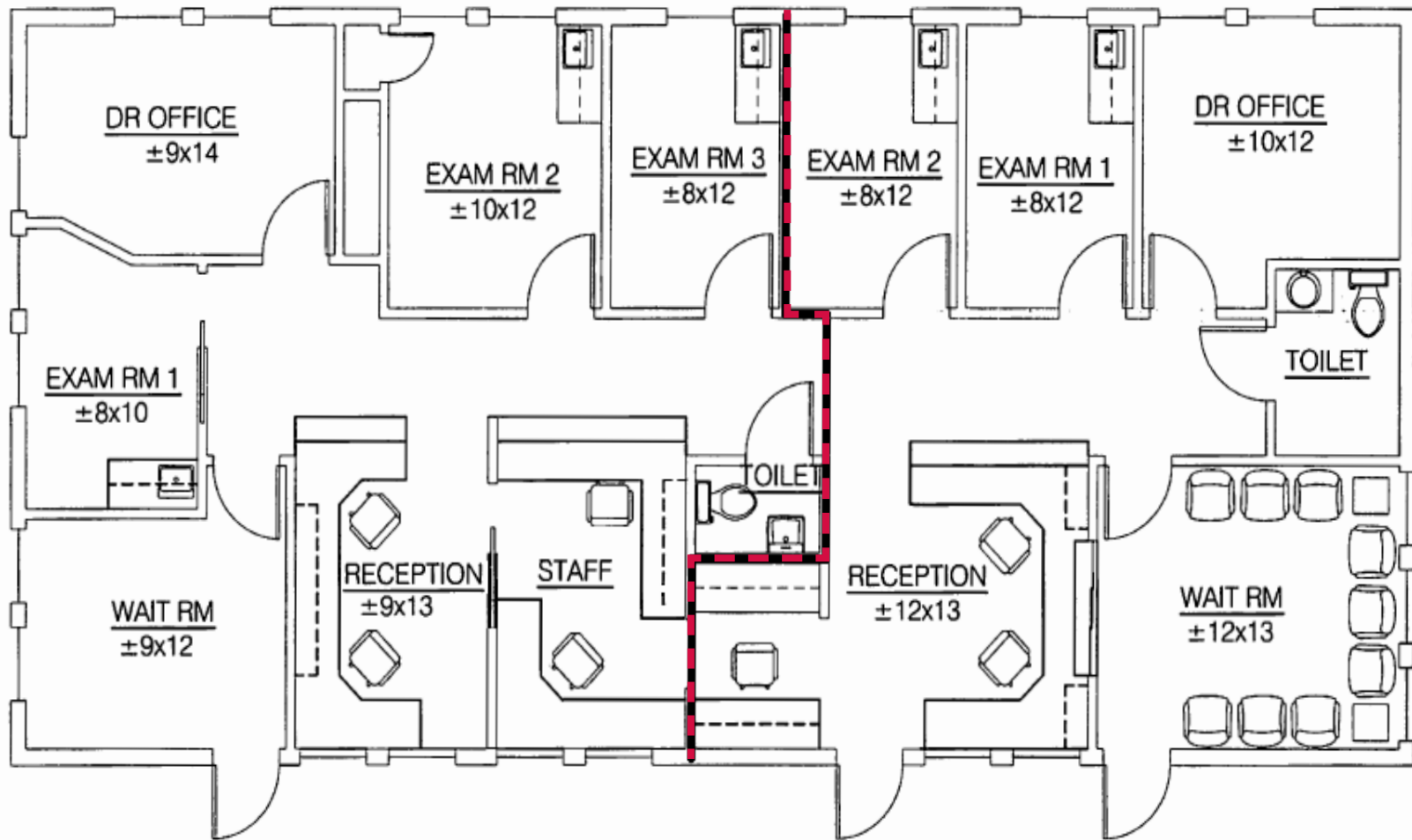


*Floorplan not to scale

FLOOR PLAN - CONCEPTUAL SPLIT

Suites 207-208: 900±SF - 1,958±SF

- Can be split into two separate suites



*Floorplan not to scale



PHOTOS

FOR LEASE

900±SF - 1,958±SF MEDICAL SPACE AVAILABLE

130 LA CASA VIA | WALNUT CREEK, CA 94598



Mark Rinkle

Principal
mrinkle@lee-associates.com
925-737-4145
LIC NO 01512632



Alex Peck

Principal
apeck@lee-associates.com
925-239-1414
LIC NO 01981426