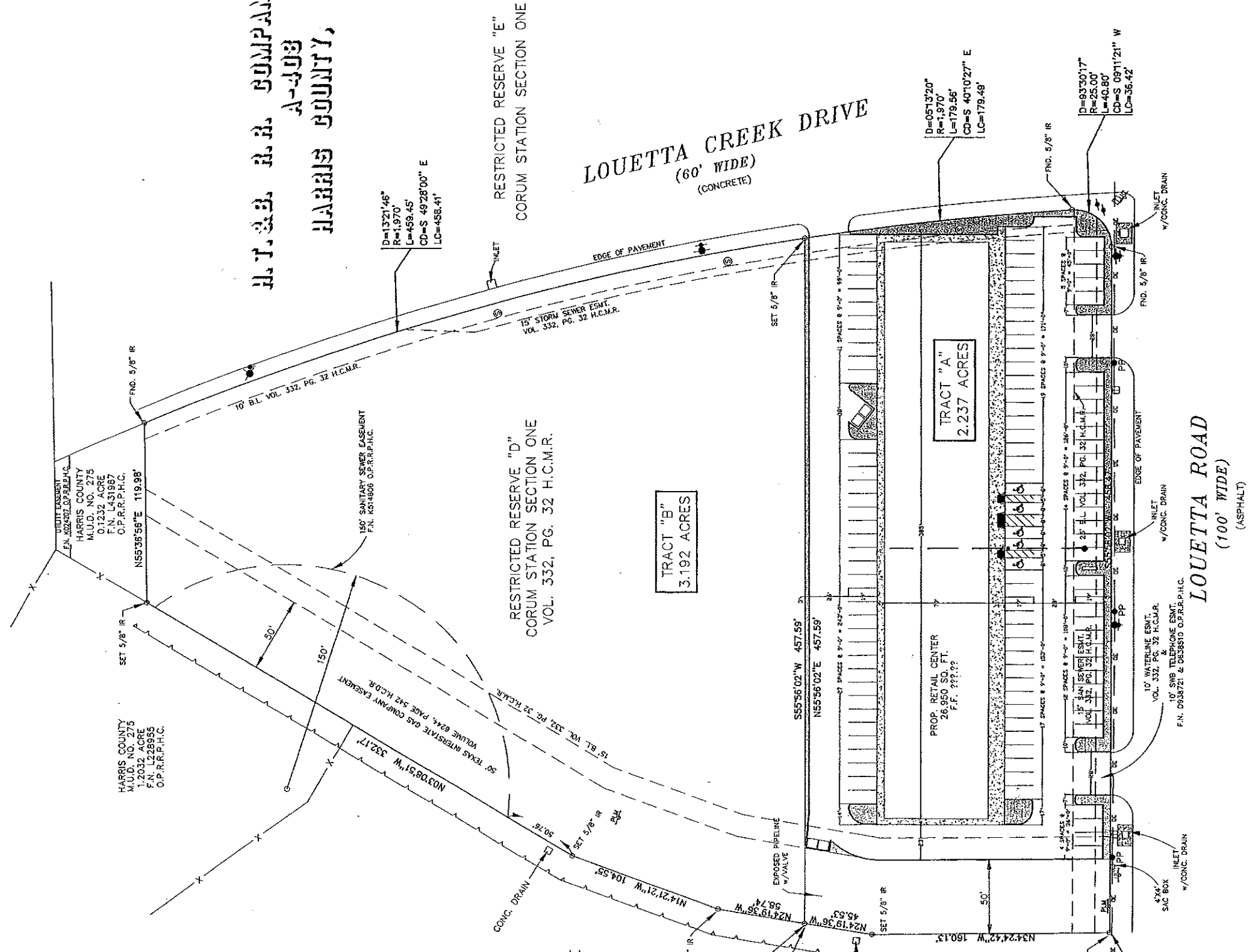


H.T.S.B. & S. COMPANY
A-403
HARRIS COUNTY, TEXAS



HARRIS COUNTY
M.U.D. NO. 275
1.2032 ACRE
F.N. L228955
O.P.R.P.H.C.

HARRIS COUNTY
M.U.D. NO. 275
0.1232 ACRE
F.N. L451987
O.P.R.P.H.C.

15' SANITARY SEWER EASEMENT
F.N. K514606 O.P.R.P.H.C.

RESTRICTED RESERVE "D"
CORUM STATION SECTION ONE
VOL. 332, PG. 32 H.C.M.R.

TRACT "B"
3.192 ACRES

TRACT "A"
2.237 ACRES

PROP. RETAIL CENTER
26,950 SQ. FT.
F.F. ???

LOUETTA ROAD
(100' WIDE)
(ASPHALT)

LOUETTA CREEK DRIVE
(60' WIDE)
(CONCRETE)

RESTRICTED RESERVE "E"
CORUM STATION SECTION ONE

D=1321.46'
R=1,970'
L=458.45'
CD=S 49°28'00" E
LC=458.41'

D=0513.20'
R=1,970'
L=179.86'
CD=S 40°10'27" E
LC=179.48'

D=9330.17'
R=25.00'
L=40.80'
CD=S 09°11'21" W
LC=36.42'

10' WATERLINE ESMT.
VOL. 332, PG. 32 H.C.M.R.
10' SUB-TELEPHONE ESMT.
F.N. D035721 & D658810 O.P.R.P.H.C.

INLET
w/CONC. DRAIN

INLET
w/CONC. DRAIN

4" x 4"
SAC BOX
w/CONC. DRAIN

CONC. DRAIN

EXPOSED PIPELINE
w/VALVE

SET 5/8" IR

SET 5/8" IR

FND. 5/8" IR

FND. 5/8" IR

FND. 5/8" IR

10' B.L. VOL. 332, PG. 32 H.C.M.R.

15' STORM SEWER ESMT.
VOL. 332, PG. 32 H.C.M.R.

50'

150'

50' TEXAS INTERSTATE GAS COMPANY EASEMENT
VOL. 844, PAGE 542 H.C.M.R.

15' B.L. VOL. 332, PG. 32 H.C.M.R.

S55°56'02"W 457.59'

N55°56'02"E 457.59'

27 SPACES @ 9'-0" = 243'-0"

11 SPACES @ 9'-0" = 99'-0"

15 SPACES @ 9'-0" = 135'-0"

14 SPACES @ 9'-0" = 126'-0"

9 SPACES @ 9'-0" = 81'-0"

15' SANITARY SEWER ESMT.
VOL. 332, PG. 32 H.C.M.R.

15' SANITARY SEWER ESMT.
VOL. 332, PG. 32 H.C.M.R.

15' WATERLINE ESMT.
VOL. 332, PG. 32 H.C.M.R.

10' SUB-TELEPHONE ESMT.
F.N. D035721 & D658810 O.P.R.P.H.C.

INLET
w/CONC. DRAIN

4" x 4"
SAC BOX
w/CONC. DRAIN

LINE