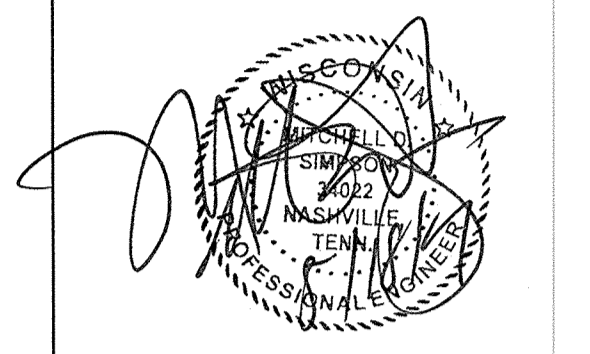
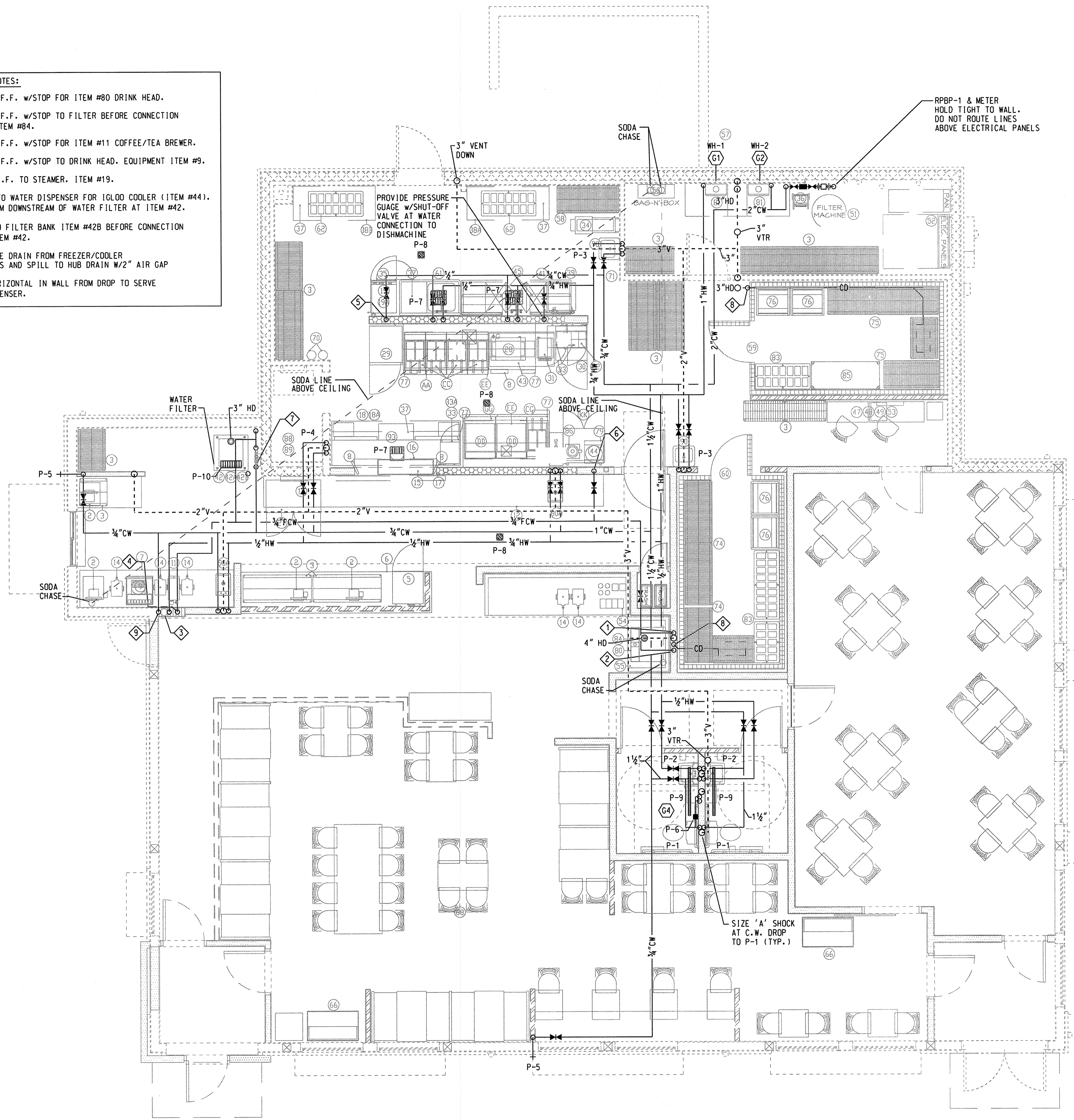


G:\17072\17-2.006  
5/17/2017  
2:50:14 PM



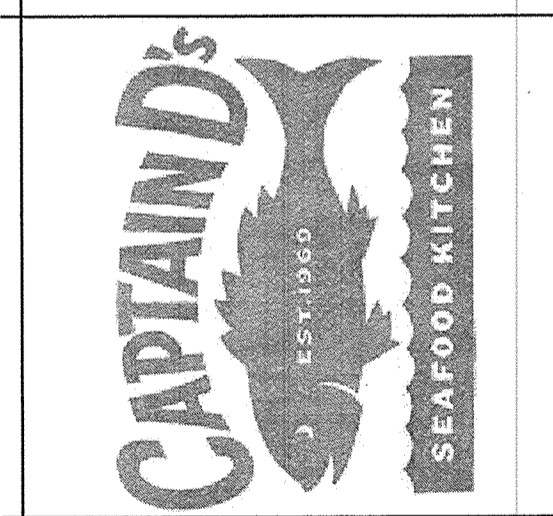
- PLUMBING PLAN NOTES:**
- 1 1/2" FCW @ 12" A.F.F. w/STOP FOR ITEM #80 DRINK HEAD.
  - 2 3/4" FCW @ 12" A.F.F. w/STOP TO FILTER BEFORE CONNECTION TO ICE MAKER. ITEM #84.
  - 3 1/4" FCW @ 48" A.F.F. w/STOP FOR ITEM #11 COFFEE/TEA BREWER.
  - 4 3/4" FCW @ 12" A.F.F. w/STOP TO DRINK HEAD. EQUIPMENT ITEM #9.
  - 5 3/4" CW @ 12" A.F.F. TO STEAMER. ITEM #19.
  - 6 1/2" FCW w/STOP TO WATER DISPENSER FOR IGLOO COOLER (ITEM #44). CW SUPPLIED FROM DOWNSTREAM OF WATER FILTER AT ITEM #42.
  - 7 3/4" CW w/STOP TO FILTER BANK ITEM #42B BEFORE CONNECTION TO ICE MAKER ITEM #42.
  - 8 ROUTE CONDENSATE DRAIN FROM FREEZER/COOLER EVAPORATOR COILS AND SPILL TO HUB DRAIN W/2" AIR GAP
  - 9 ROUTE 1/2" CW HORIZONTAL IN WALL FROM DROP TO SERVE TEA/COFFEE DISPENSER.



4.0' = 1" / m.  
rsouthall

PLUMBING  
FLOOR PLAN  
SCALE 1/4" = 1'-0"

A NEW LOCATION FOR  
**CAPTAIN D'S**  
7320 W GOOD HOPE ROAD  
MILWAUKEE, WI 53223  
**CAPTAIN D'S, LLC**  
624 GRASSMERE PARK DRIVE,  
SUITE 30  
NASHVILLE, TN 37211



Job Number:  
68C-0157  
Revisions:

MAY 18, 2017  
**P-2**  
PLUMBING  
FLOOR PLAN