

740 Springdale Drive,
Exton, PA



JoAnn West

610.324.1227

jwest@liebermanearley.com

Phil Earley, CCIM

610.348.3343

philearley@liebermanearley.com

LIEBERMAN EARLEY & COMPANY

www.liebermanearley.com | 610-688-4300

The Meadows - 485 Devon Park Drive, Suite 110, Wayne, PA 19087

A photograph of a modern building's interior. On the left, a curved staircase with light-colored steps and a wooden handrail leads down. A black metal railing with vertical bars surrounds the staircase. To the right, a large glass wall and door system provides a view of the outdoors. The floor is made of light-colored tiles. The ceiling features a series of parallel wooden beams. The overall atmosphere is bright and airy due to the large windows.

740 Springdale Drive,
Exton, PA

Disclaimer

Information contained herein has been obtained from the owner of the property or from sources deemed reliable. We have no reason to doubt its accuracy but make no warranty or representation. All information is submitted subject to errors, omissions, change, withdrawal without notice and any special listing conditions of the owner.

LIEBERMAN EARLEY & COMPANY

The Meadows - 485 Devon Park Drive, Suite 110, Wayne, PA 19087

740 Springdale Drive,
Exton, PA



Disclaimer

Information contained herein has been obtained from the owner of the property or from sources deemed reliable. We have no reason to doubt its accuracy but make no warranty or representation. All information is submitted subject to errors, omissions, change, withdrawal without notice and any special listing conditions of the owner.

LIEBERMAN EARLEY & COMPANY

The Meadows - 485 Devon Park Drive, Suite 110, Wayne, PA 19087

740 Springdale Drive,
Exton, PA



Disclaimer

Information contained herein has been obtained from the owner of the property or from sources deemed reliable. We have no reason to doubt its accuracy but make no warranty or representation. All information is submitted subject to errors, omissions, change, withdrawal without notice and any special listing conditions of the owner.

LIEBERMAN EARLEY & COMPANY

The Meadows - 485 Devon Park Drive, Suite 110, Wayne, PA 19087

EXECUTIVE SUMMARY

Total Available:	5,681 RSF
First Floor Spaces:	1,025 SF 1,665 RSF
Second Floor Spaces:	2,991 SF
Utilities:	Separately Metered
Parking:	208 parking spots
Amenities:	Exton Mall, Main Street at Exton, shops and restaurants within minutes.



LOCATION & SITE FEATURES:

Located in Whiteland Business Campus off Route 30.
The By-Pass, Routes 202 & 100 minutes away. On-site
property ownership & management.

740 Springdale Drive,
Exton, PA



BUILDING DESCRIPTION:

Beautiful -2 story atrium with
renovations including new roof,
common areas, lobby, new
restrooms and a new elevator cab.

New Elevator Cab



Lease Rate: "As is"
Flexible Terms Available

LOCATION HIGHLIGHTS / SITE MAP



740 Springdale Drive is in Whiteland Business Park off of Route 30.

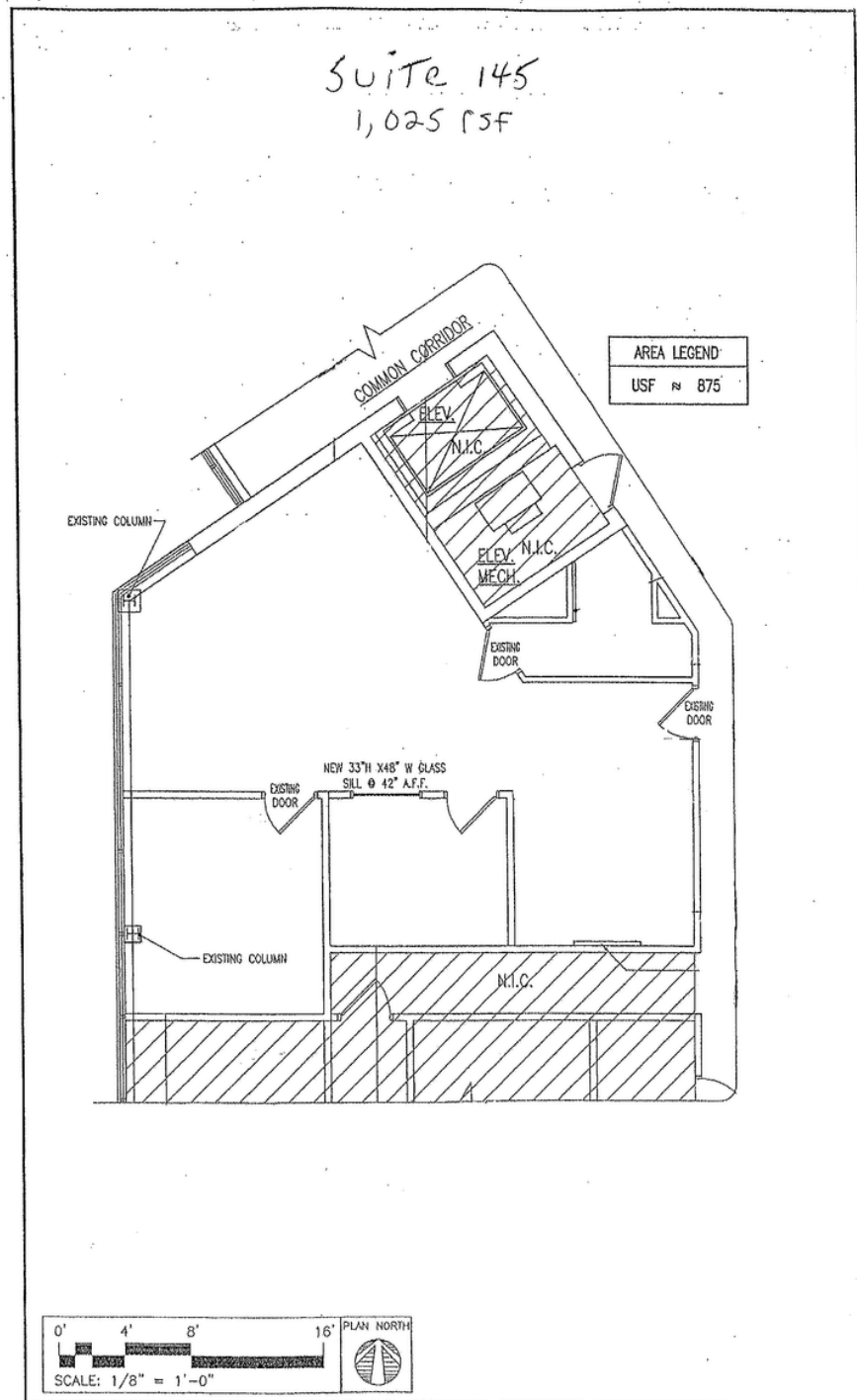


It is near the Exton Mall, Main Street at Exton, many restaurants, and the Chester Valley Trail.

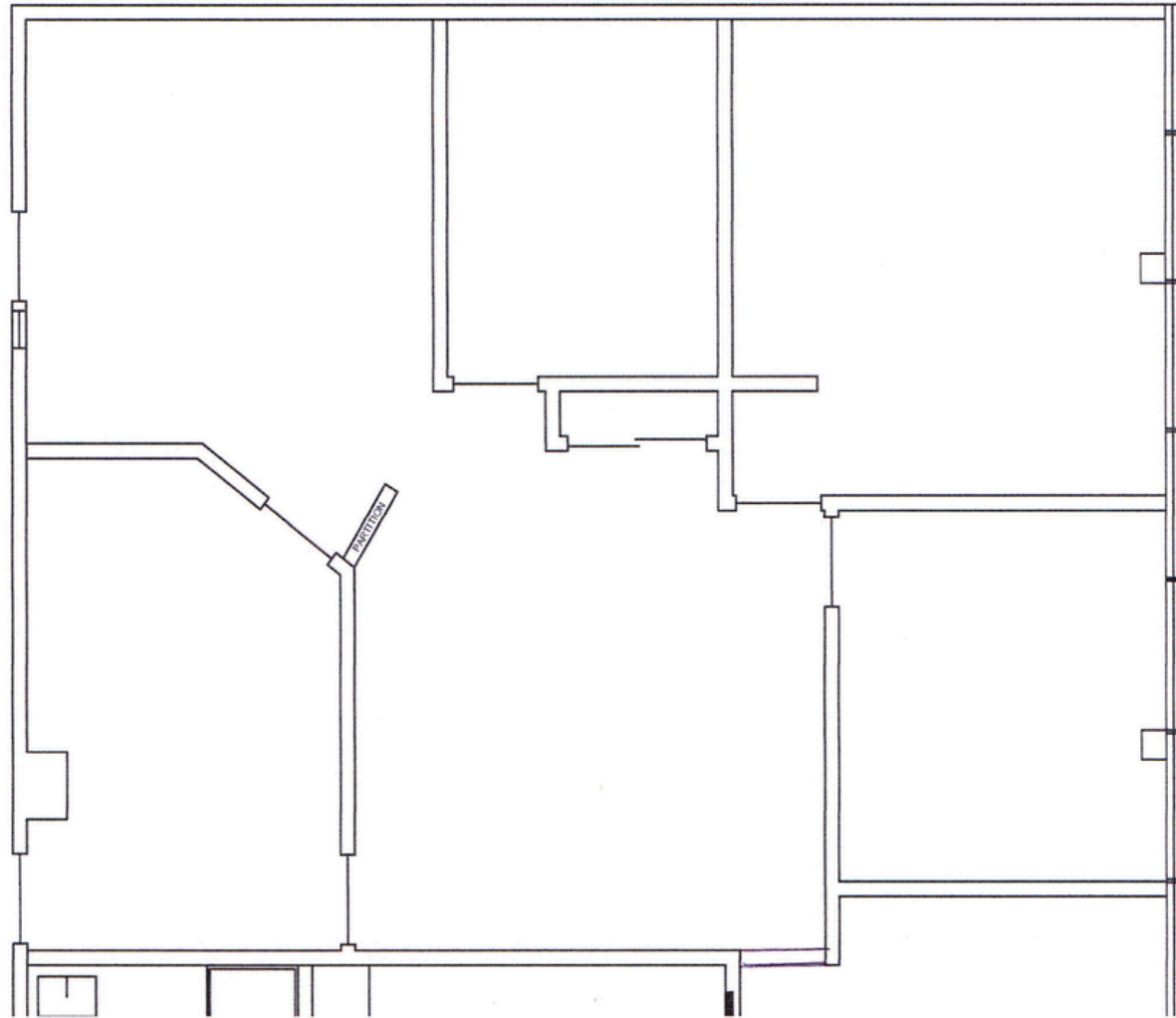


It is also within minutes of Routes 100, 202, and 30 Bypass. 324 residential units planned across from Whiteland Business Park including a Super Wawa.

FLOOR PLANS - FIRST FLOOR 1,025 SF

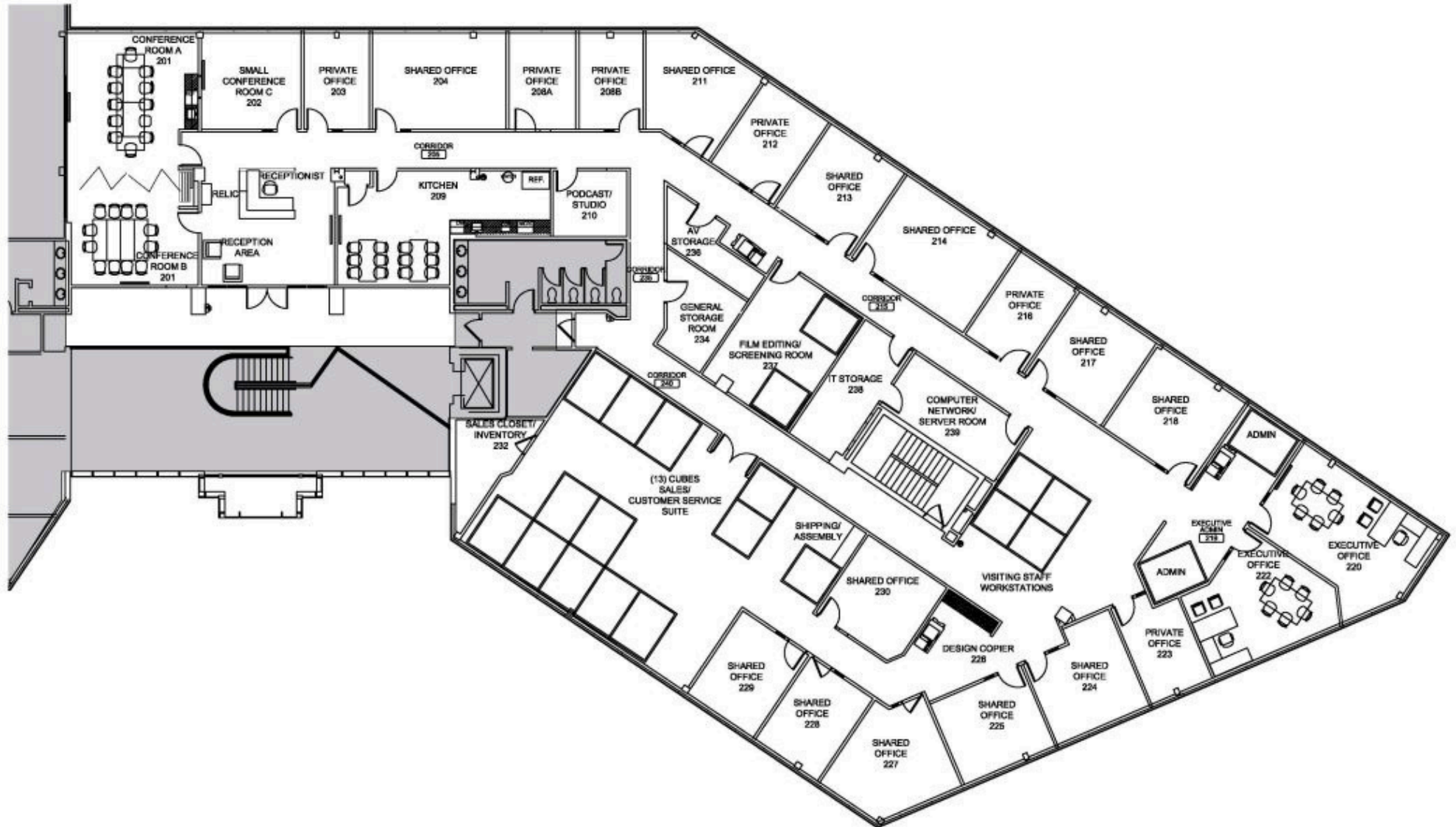


FLOOR PLANS - FIRST FLOOR 1,665 SF



Suite 104
1,665 RSF

FLOOR PLANS - SECOND FLOOR 13,128 SF



FLOOR PLANS - 2,991 SF

