



LAND FOR SALE

MERIDIAN HILLS – TALLAHASSEE, FLORIDA



FOR SALE

**89.03 ± ACRES LAND FOR
CEMETERY DEVELOPMENT**

NAI TALCOR

FOR MORE INFORMATION CONTACT:

E. Edward Murray, Jr., SIOR, CCIM
NAI Director | President | Broker
murray@talcort.com
Office +1 850 224 2300
Cell +1 850 566 9088

PROPERTY SUMMARY

PROPERTY DESCRIPTION

Site Name	MERIDIAN HILLS
Property ID	1107206100000
Location	Meridian Rd. near Lake Shore Drive, Tallahassee, FL 32312
County	Leon
Use	Cemetery
City Limits	Out
Acres	89.03±
Site Details	Ideal location in convenient and high-income area. Existing topography and trees will make it a premier cemetery in the marketplace. Zoned for a cemetery. Ability to include on-site funeral home.
Current Zoning	Lake Protection
Price	\$6,500,000



1.7 Miles

Minutes away
from I-10



9 Miles

To the Tallahassee
International Airport



3.5 Miles

From Downtown Tallahassee

MERIDIAN HILLS
89.03 +/- ACRES LAND FOR SALE

E. Edward Murray, Jr., SIOR, CCIM | murray@talcor.com
Office +1 850 224 2300 | Cell +1 850 566 9088

PROPERTY OVERVIEW

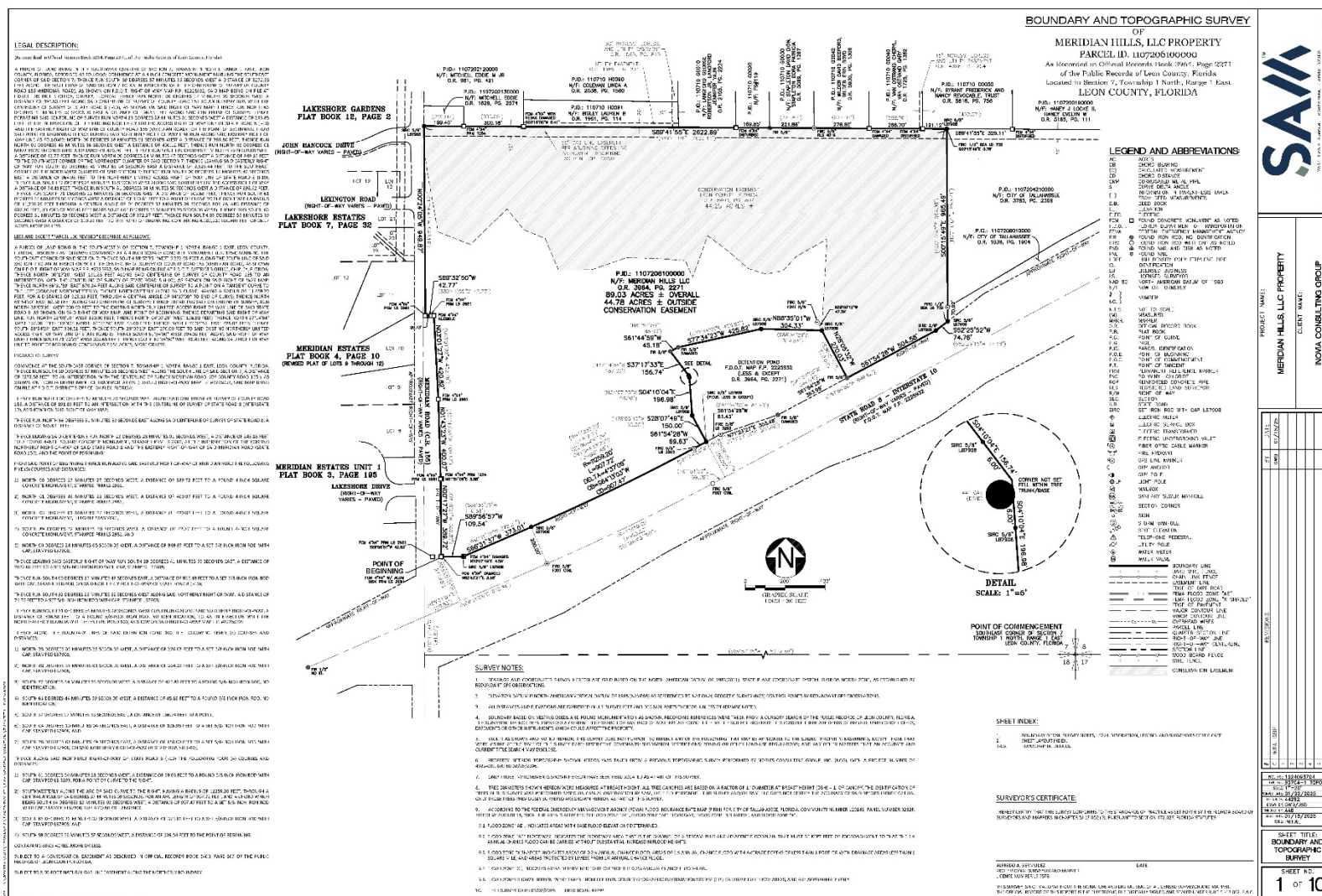
Prime 89.03± acre cemetery development opportunity in north Tallahassee Located on N Meridian Rd near the intersection of Lakeshore Dr, this expansive 89.03± acre property presents a rare opportunity for a cemetery development in a serene and accessible setting. Nestled in the peaceful northern part of Tallahassee, the site is surrounded by mature trees and natural beauty, offering a tranquil environment ideal for a final resting place. With its generous acreage, the property provides ample space for a thoughtfully designed cemetery, including burial plots, mausoleums, memorial gardens, and walking paths. The location offers convenient access to major roadways, ensuring ease of visitation for families while maintaining a quiet, respectful atmosphere. This unique offering is well-positioned to meet the growing need for burial space in the Tallahassee area. Whether for private, religious, or commercial cemetery use, this land is primed for long-term value and thoughtful development. Don't miss this exceptional investment opportunity in one of North Florida's most desirable locations.



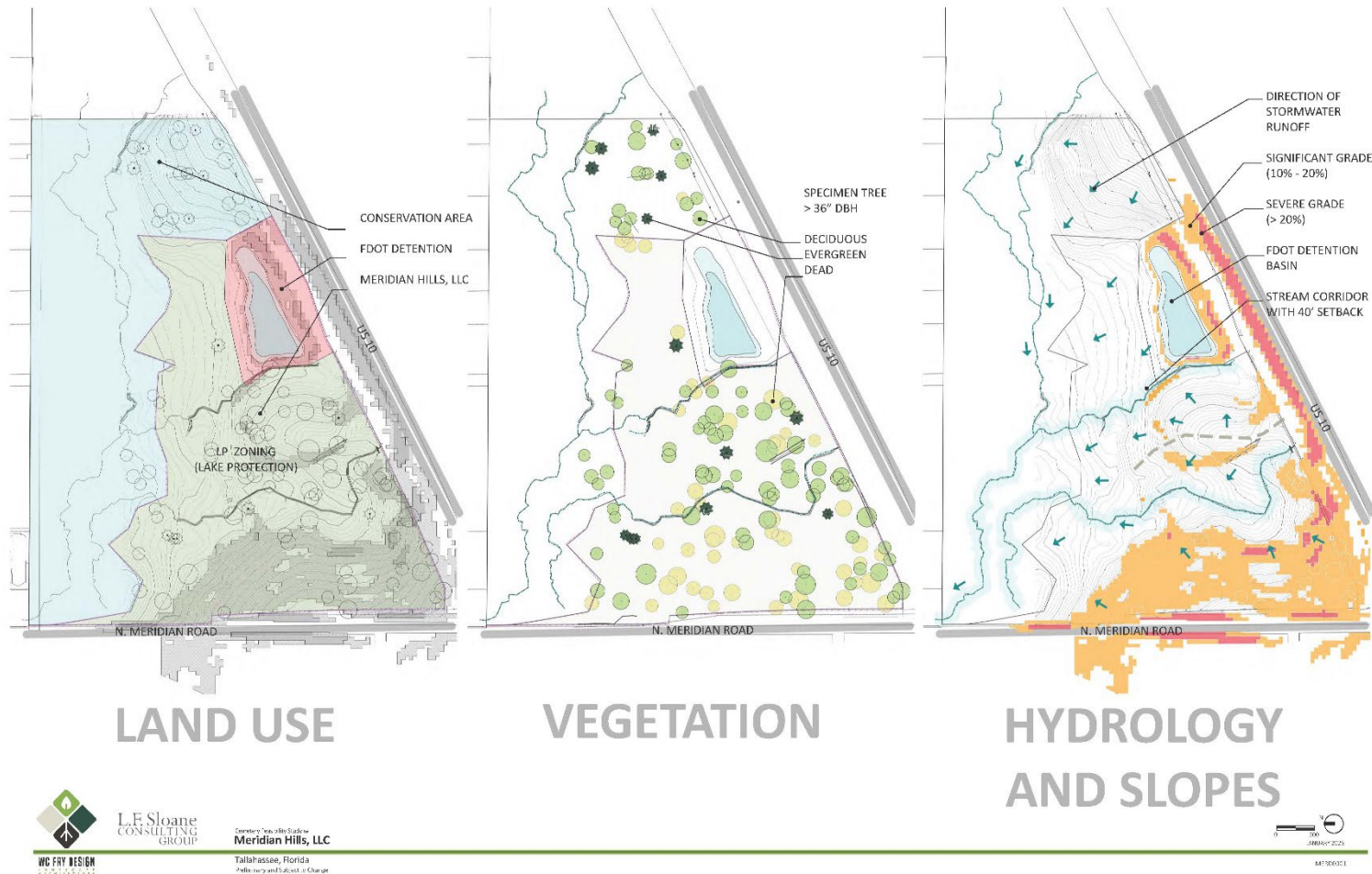
MERIDIAN HILLS
89.03 +/- ACRES LAND FOR SALE

E. Edward Murray, Jr., SIOR, CCIM | murray@talcorm.com
Office +1 850 224 2300 | Cell +1 850 566 9088

PROPERTY SURVEY



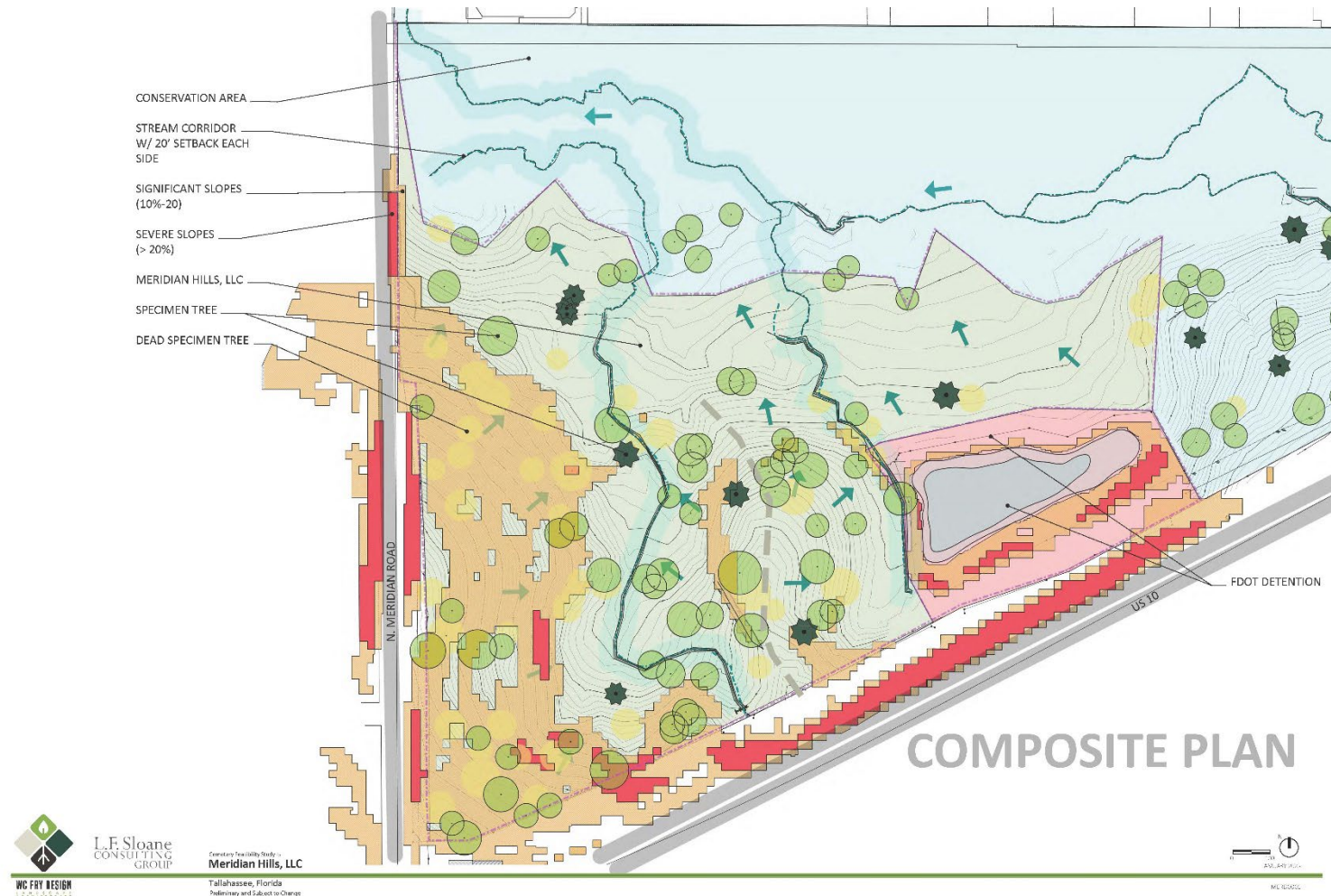
FEASIBILITY STUDY



MERIDIAN HILLS
89.03 +/- ACRES LAND FOR SALE

E. Edward Murray, Jr., SIOR, CCIM | murray@talcort.com
Office +1 850 224 2300 | Cell +1 850 566 9088

COMPOSITE PLAN



MERIDIAN HILLS
89.03 +/- ACRES LAND FOR SALE

E. Edward Murray, Jr., SIOR, CCIM | murray@talcort.com
Office +1 850 224 2300 | Cell +1 850 566 9088

MASTER PLAN



MERIDIAN HILLS
89.03 +/- ACRES LAND FOR SALE

E. Edward Murray, Jr., SIOR, CCIM | murray@talcort.com
Office +1 850 224 2300 | Cell +1 850 566 9088

PROPERTY

DEMOGRAPHICS

POPULATION	1 MILE	3 MILES	5 MILES
Total Population	3,850	44,300	164,356
Average Age	44	42	37
Average Age (Male)	43	40	36
Average Age (Female)	46	43	37

HOUSEHOLDS & INCOME	1 MILE	5 MILES	10 MILES
Total Households	1,587	20,146	70,355
# Of Persons Per HH	2.4	2.2	2.3
Average HH Income	\$137,208	\$104,889	\$85,427
Average House Value	\$475,748	\$364,737	\$298,760

MERIDIAN HILLS

89.03 +/- ACRES LAND FOR SALE

E. Edward Murray, Jr., SIOR, CCIM | murray@talcor.com

Office +1 850 224 2300 | Cell +1 850 566 9088



E. Edward Murray, Jr., SIOR, CCIM

NAI Director | President | Broker

murray@talcort.com

Office +1 850 224 2300

Cell +1 850 566 9088

NAI TALCOR

1018 Thomasville Road, Suite 200A

Tallahassee, Florida 32303

+1 850 224 2300

TALCOR.COM

©2022 NAI TALCOR

The contents of this proposal are intended for the individuals to whom it is presented or delivered and their company associates. Any dissemination or replication, without the express authorization of NAI TALCOR, is strictly prohibited.