

FOR LEASE

Commercial Flex Space

# 410 Genesis Suite D

410 Genesis Blvd Suite D  
Webster, TX 77598

10,000 SF  
AVAILABLE

\$17.16  
\$/SF/YR/NNN

\$7.08  
\$/SF/YR OPEX



Move In Ready · Fully Climatized · Rear Truck Access · 18' Clear Height

**Ross Wycoff**

ross@wycoffdevelopment.com

Ph 281.455.4898 (Office)



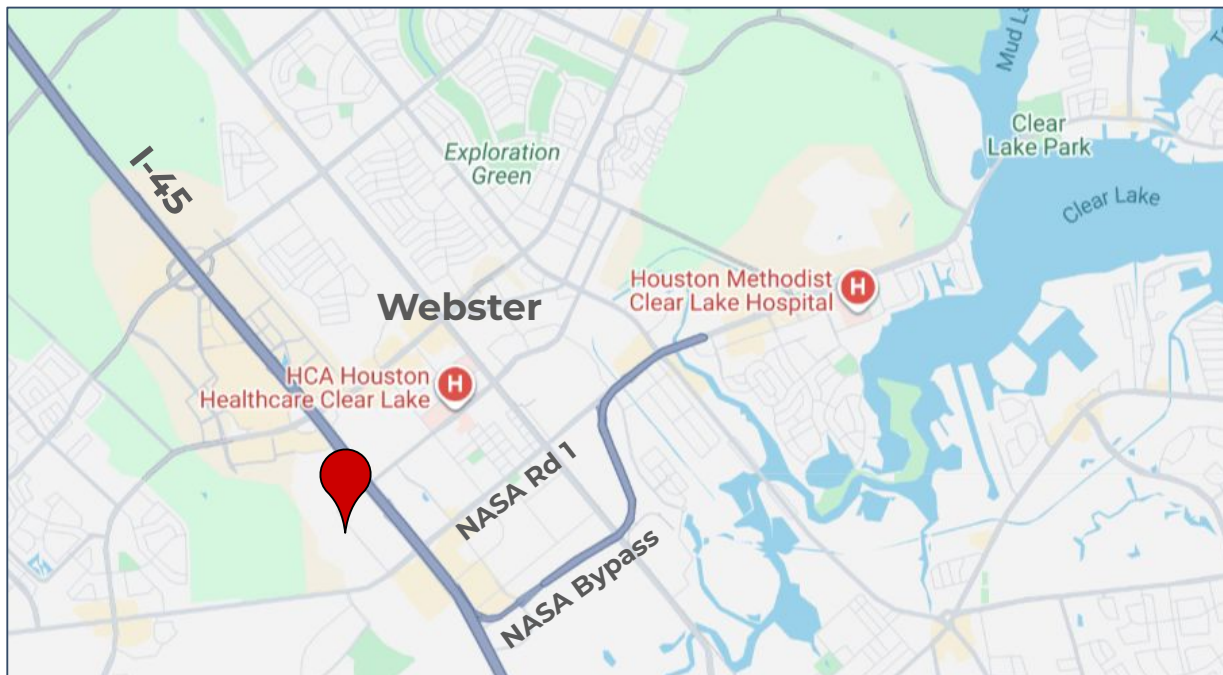
www.wycoffdevelopment.com  
Office 281.332.0260

## Property Overview

Year Built	Total SF	Zoning	Parking
2022	10,000	C1 & C2	35+

### HIGHLIGHTS

- Large common parking area
- 18' Interior clear height
- (2) Rear roll up doors
- Fully Climate Controlled
- Modern Open Interior Space
- (2) Medical Tenants in the adjacent suites
- Easy access to I-45 and Webster Medical Center
- Move In Ready



**Ross Wycoff**

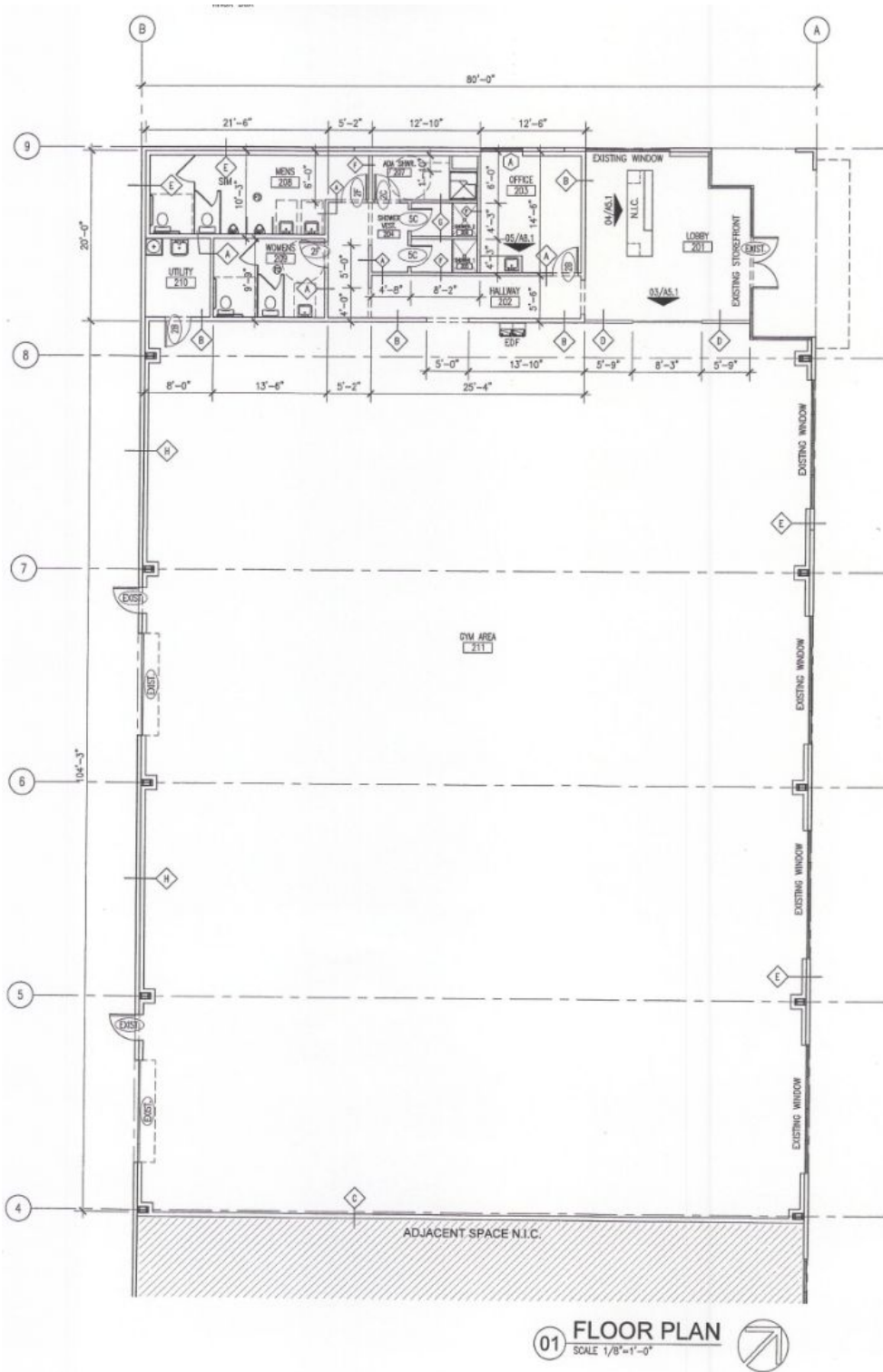
ross@wycoffdevelopment.com

Ph 281.455.4898 (Office)



www.wycoffdevelopment.com  
Office 281.332.0260

# Existing Floor Plan



Ross Wycoff

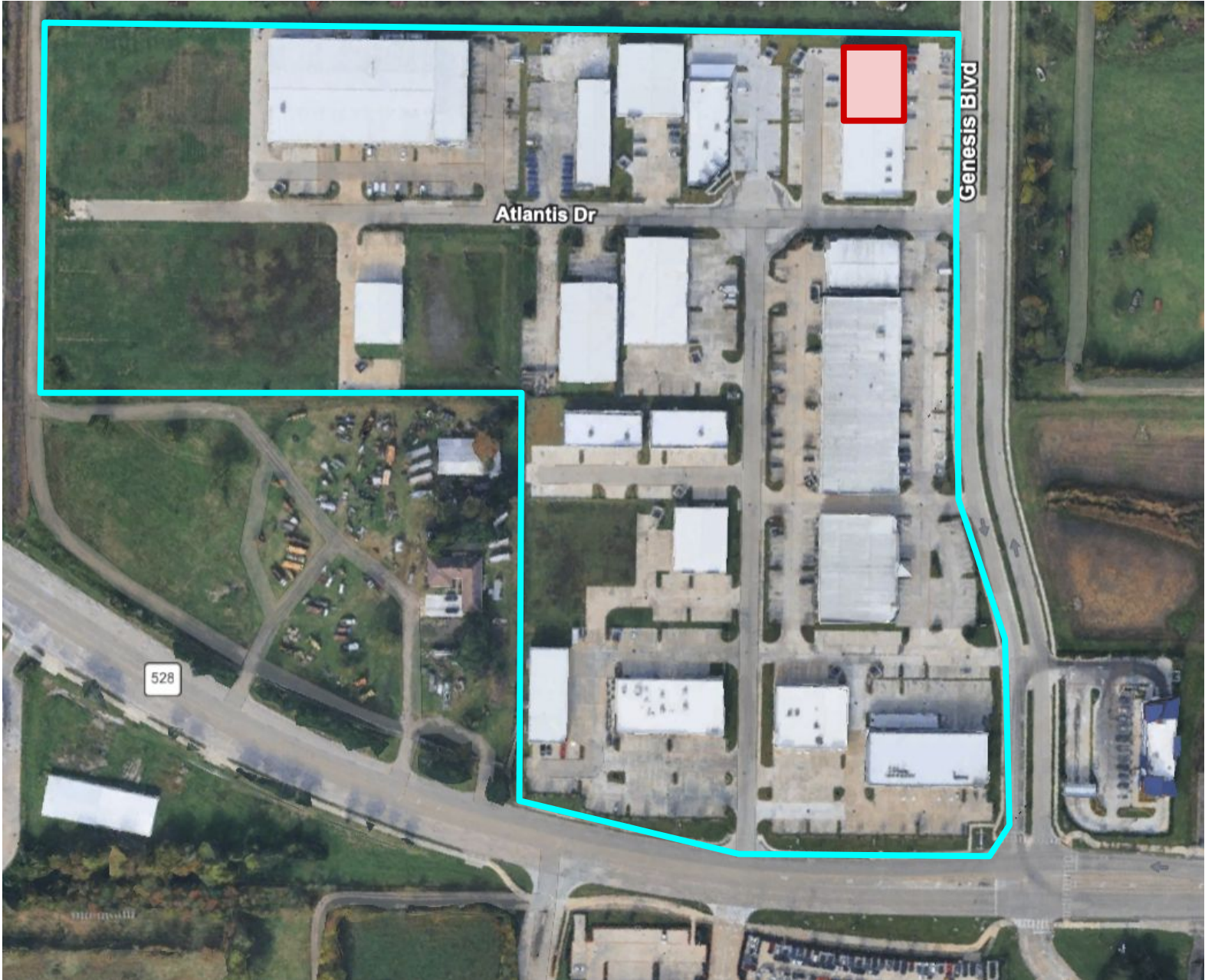
ross@wycoffdevelopment.com

Ph 281.455.4898 (Office)



www.wycoffdevelopment.com  
Office 281.332.0260

# Site Plan Location



**Ross Wycoff**  
ross@wycoffdevelopment.com  
Ph 281.455.4898 (Office)