

# 2,128 SF

## Medical/Office Space For Sale or Lease



1630 CAMPUS PARK DRIVE, SUITE C

MONROE, NC



### PROPERTY OVERVIEW

- » Sale Price: \$560,000
- » Lease Rate: \$22.00 NNN
- » Total SF: 2,128 (100% office)
- » Parcel ID: 09156003E
- » Deeded Acres: 0.049
- » Zoning: MD-MX (Medical district mixed-use)

### HIGHLIGHTS

- » 4 observation rooms with a full bathroom and shower
- » 1 office
- » 1 exam room
- » Records room
- » Reception area
- » Waiting room
- » Break area
- » Formerly used as a sleep medicine practice
- » Conveniently located just off Hwy 74 near Atrium Health Medical Campus

## Contact

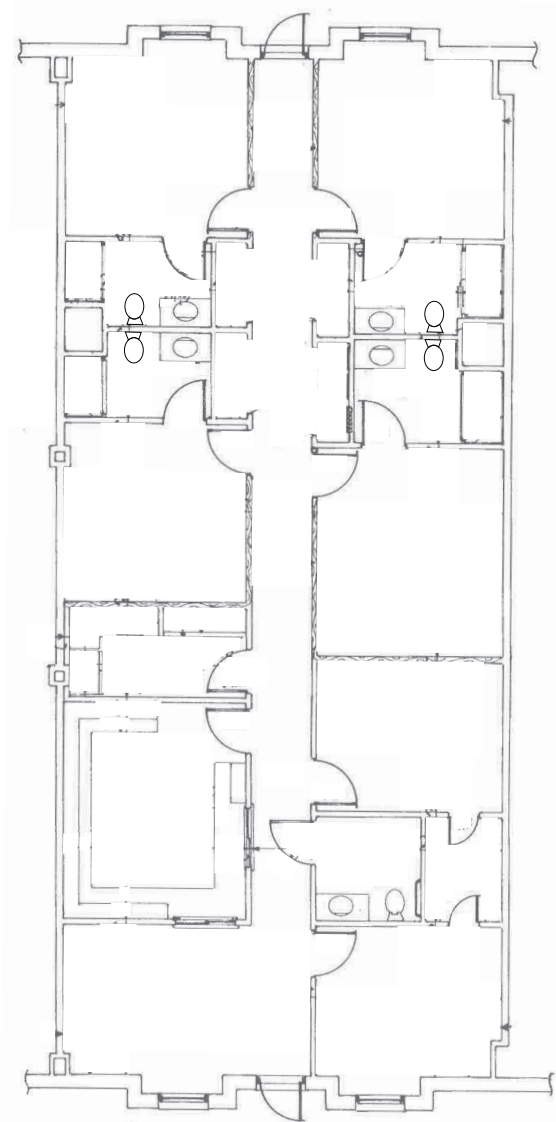
**EMILY CLINE**  
704.280.1314  
ecline@trinity-partners.com



# 2,128 SF

Medical/Office Space For Sale or Lease

**1630 CAMPUS PARK DRIVE, SUITE C**  
MONROE, NC



Contact \_\_\_\_\_

**EMILY CLINE**  
704.280.1314  
ecline@trinity-partners.com

**TRINITY**  
PARTNERS