

Midtown Office for the Design-Minded.

407 West Osborn Road | Phoenix, Arizona

For Lease. Central Access. Thoughtful Spaces.

Suite 100 (Ground)
±1,717 RSF (incl. shared)

Suite 000 (Lower)
±2,498 RSF (incl. shared)

Inquiries:

TJ Claassen
602-524-6000 cell
tj@oxurban.com
oxurban.com



Midtown Office for the Design-Minded.

407 West Osborn Road | Phoenix, Arizona



Inquiries:

TJ Claassen
602-524-6000 cell
tj@oxurban.com
oxurban.com



Midtown Office for the Design-Minded.

407 West Osborn Road | Phoenix, Arizona



Inquiries:

TJ Claassen
602-524-6000 cell
tj@oxurban.com
oxurban.com



Midtown Office for the Design-Minded.

407 West Osborn Road | Phoenix, Arizona



Inquiries:

TJ Claassen
602-524-6000 cell
tj@oxurban.com
oxurban.com



Lease Summary

Two Suites. Incredible Common Space. Refreshing Work Environment

Nestled in the heart of Midtown Phoenix, 407 West Osborn Road is a designer-owned creative studio building crafted for architecture, design, and like-minded practices. Offering two distinct suites—a 1,717 RSF ground-level space and a 2,498 RSF lower-level suite—tenants select their private footprint while gaining seamless access to thoughtfully curated shared amenities, including two conference rooms, a private phone/podcast booth, lounge, and full break area with shower. This flexible, efficient model delivers the benefits of larger common programming without the burden of full build-out costs, all within a beautifully renovated mid-century property steps from light rail and the vibrant Park Central district.

Inquiries:

TJ Claassen
602-524-6000 cell
tj@oxurban.com

oxurban.com



Designer-owned building with flexible suites and a Shared Common Space

Suite 100 (Ground)
1,717 RSF · \$25.00 base + NNN

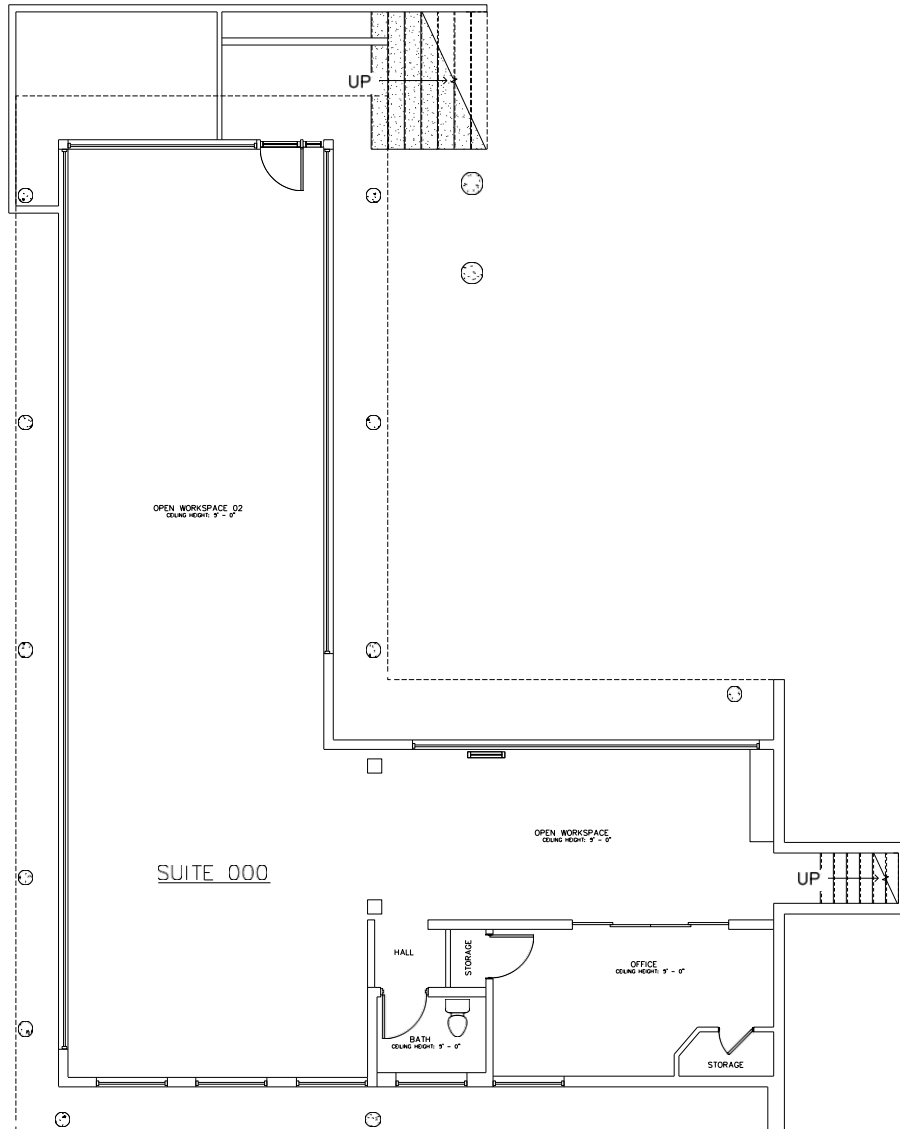
Suite 000 (Lower)
2,498 RSF · \$23.00 base + NNN

(RSF includes 401 RSF of shared space per suite)



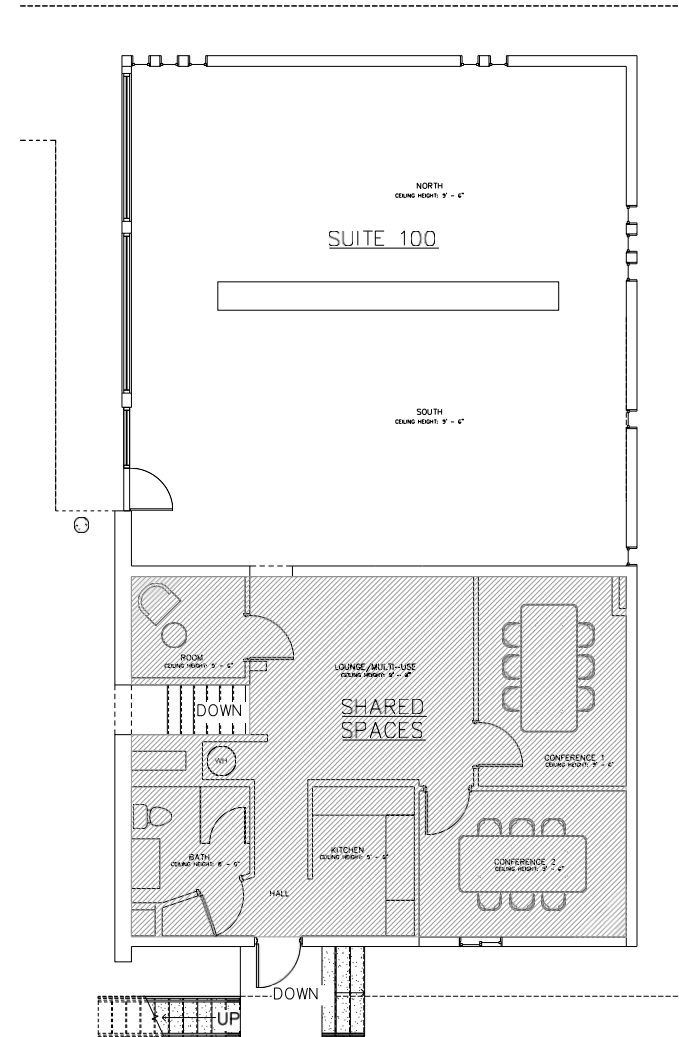
Suite 000 (Lower)

2,498 RSF · \$23.00 base + NNN

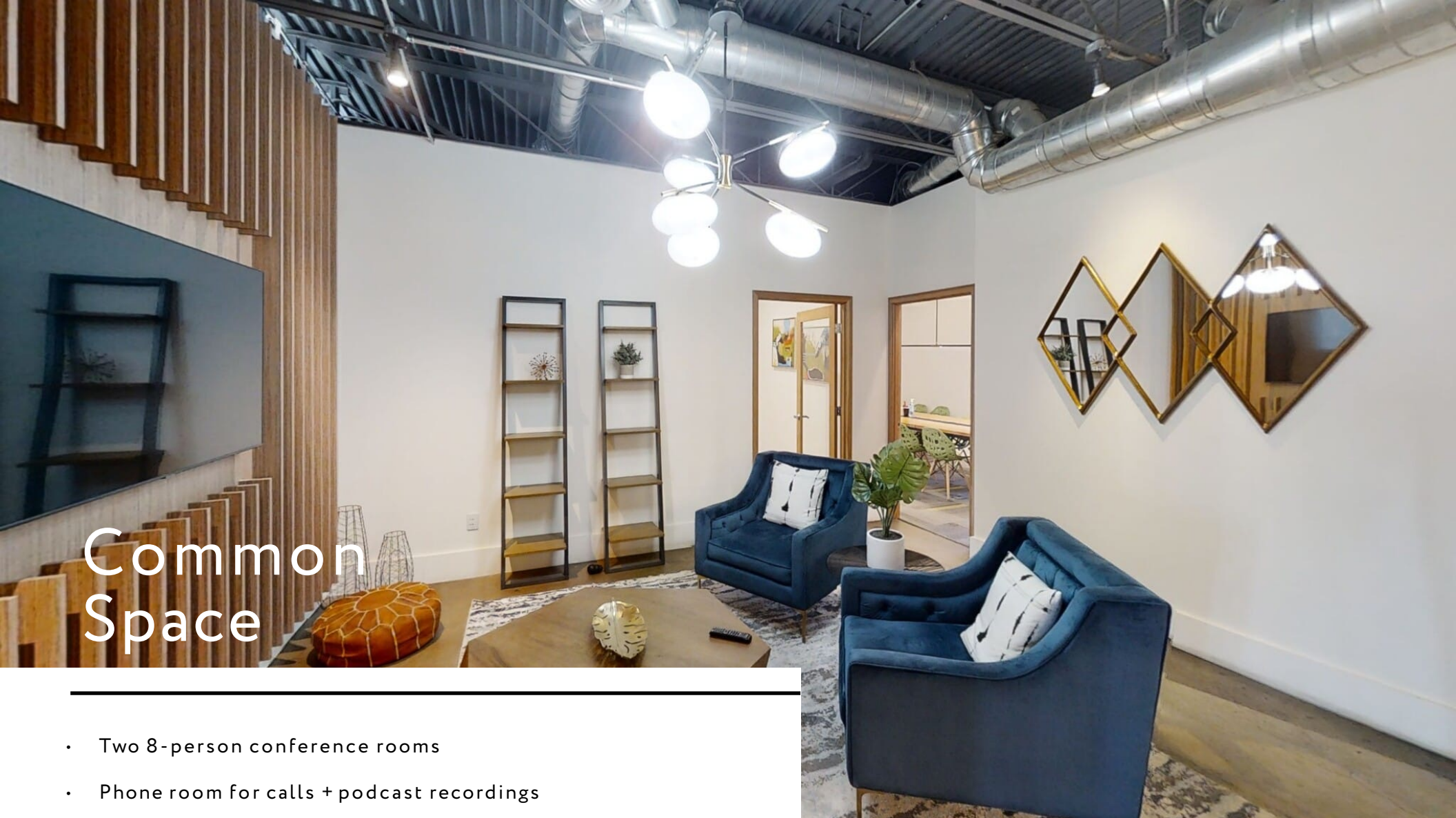


Suite 100 (Ground)

1,717 RSF · \$25.00 base + NNN



(RSF includes portion of shared common space)



Common Space

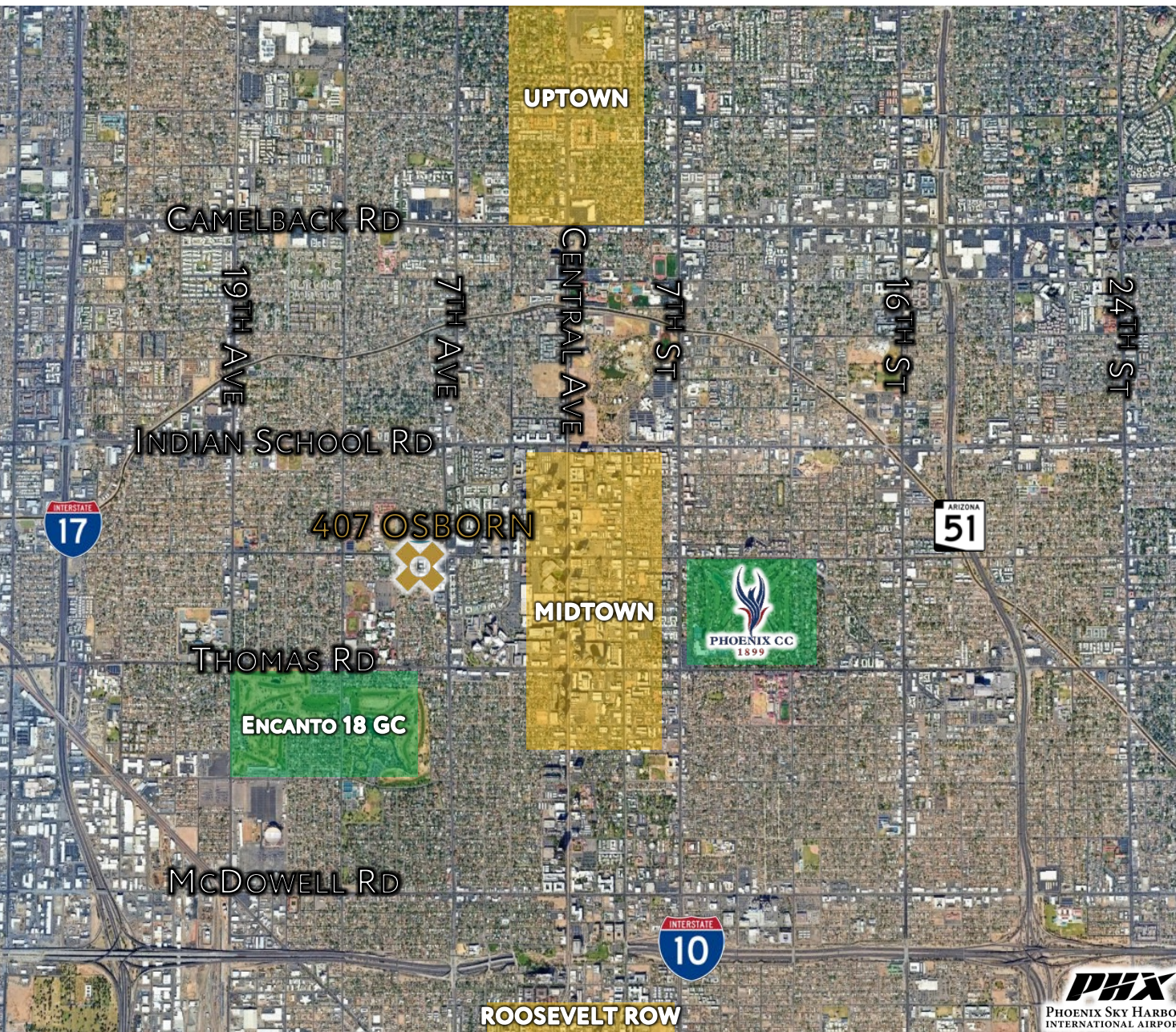
- Two 8-person conference rooms
- Phone room for calls + podcast recordings
- Lounge for informal work and decompression
- Break room and bathroom with shower

Allocation (simple):

Each suite contributes to the shared common spaces

Location Context

Positioned at the vibrant intersection of Midtown Phoenix's Central Corridor and the revitalized Park Central district, 407 West Osborn Road places creative practices at the heart of the city's most connected and walkable node. Steps from the Osborn/Central Valley Metro light-rail station and minutes from I-10, I-17, and SR-51, the building offers effortless access across the Valley without sacrificing the energy of an urban creative hub. Surrounded by Park Central's growing mix of restaurants, coffee, retail, and daily amenities—plus abundant structured parking and a dynamic institutional backdrop—this is a location that fuels inspiration, collaboration, and convenience in equal measure.



Midtown Office for the Design-Minded.

407 West Osborn Road | Phoenix, Arizona



Inquiries:

TJ Claassen
602-524-6000 cell
tj@oxurban.com
oxurban.com

