



Opportunity

- Suite 100: 5,800 SF
- Ask price: \$2.9 Million (\$500 PSF)
- Private entrance from parking lot
- Space consists of:
 - Reception and waiting area
 - Pre-op and Post-op areas
 - Operating room
 - Nurse station
 - Break room kitchen
 - Storage
 - Backup generator
 - In suite restrooms



For more information, contact:

Robert C. Dickman
Principal
301.417.1091
Bob.dickman@avisonyoung.com

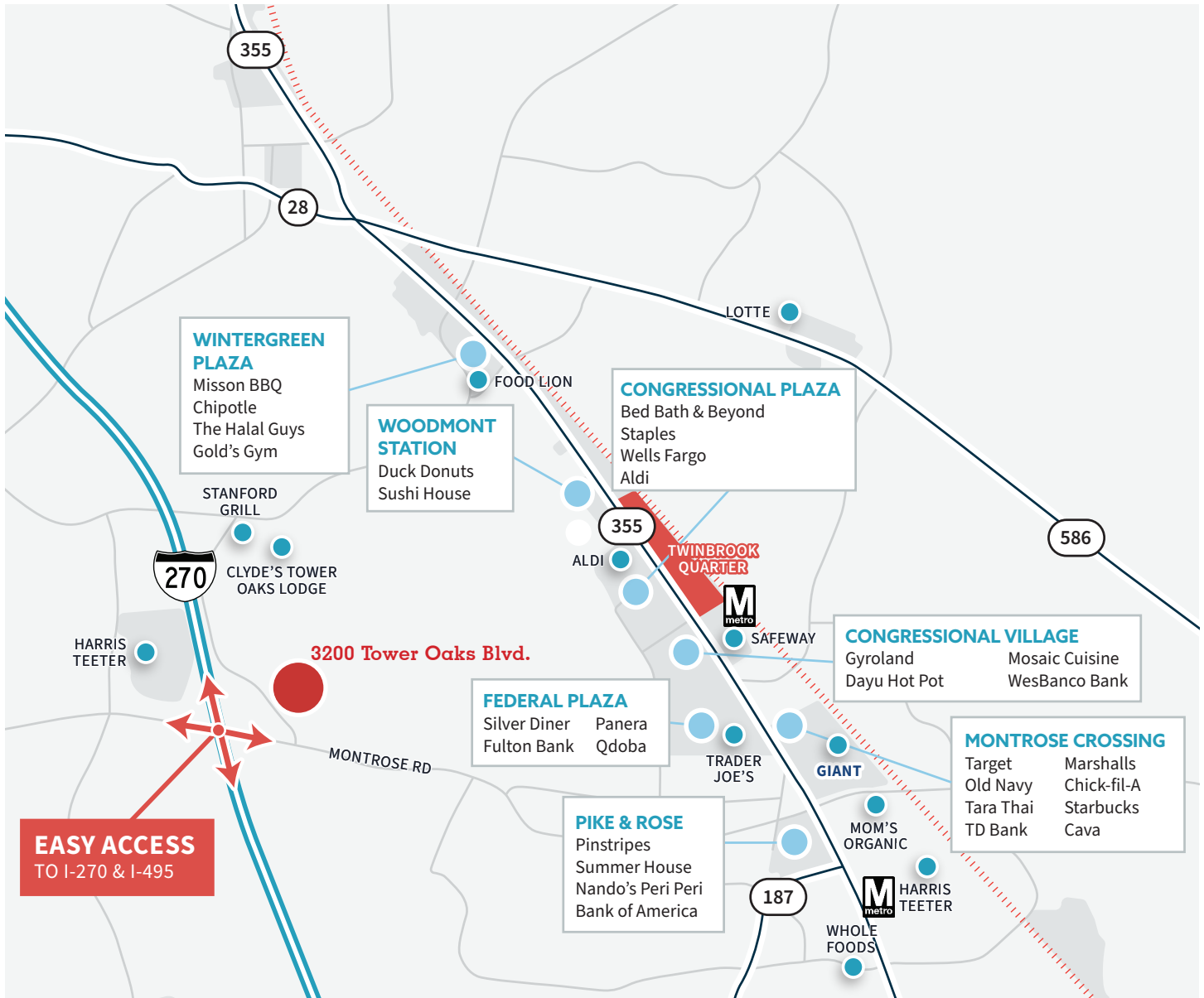
Robert Wrightson
Senior Vice President
301.417.1063
bob.wrightson@avisonyoung.com

Connor Wrightson
Senior Associate
301.417.1088
connor.wrightson@avisonyoung.com

11921 Rockville Pike
Suite 200
Rockville, MD 20852
301.948.9870

3200 Tower Oaks Boulevard

Map Location



For more information, contact:

Robert C. Dickman
Principal
301.417.1091
Bob.dickman@avisonyoung.com

Robert Wrightson
Senior Vice President
301.417.1063
bob.wrightson@avisonyoung.com

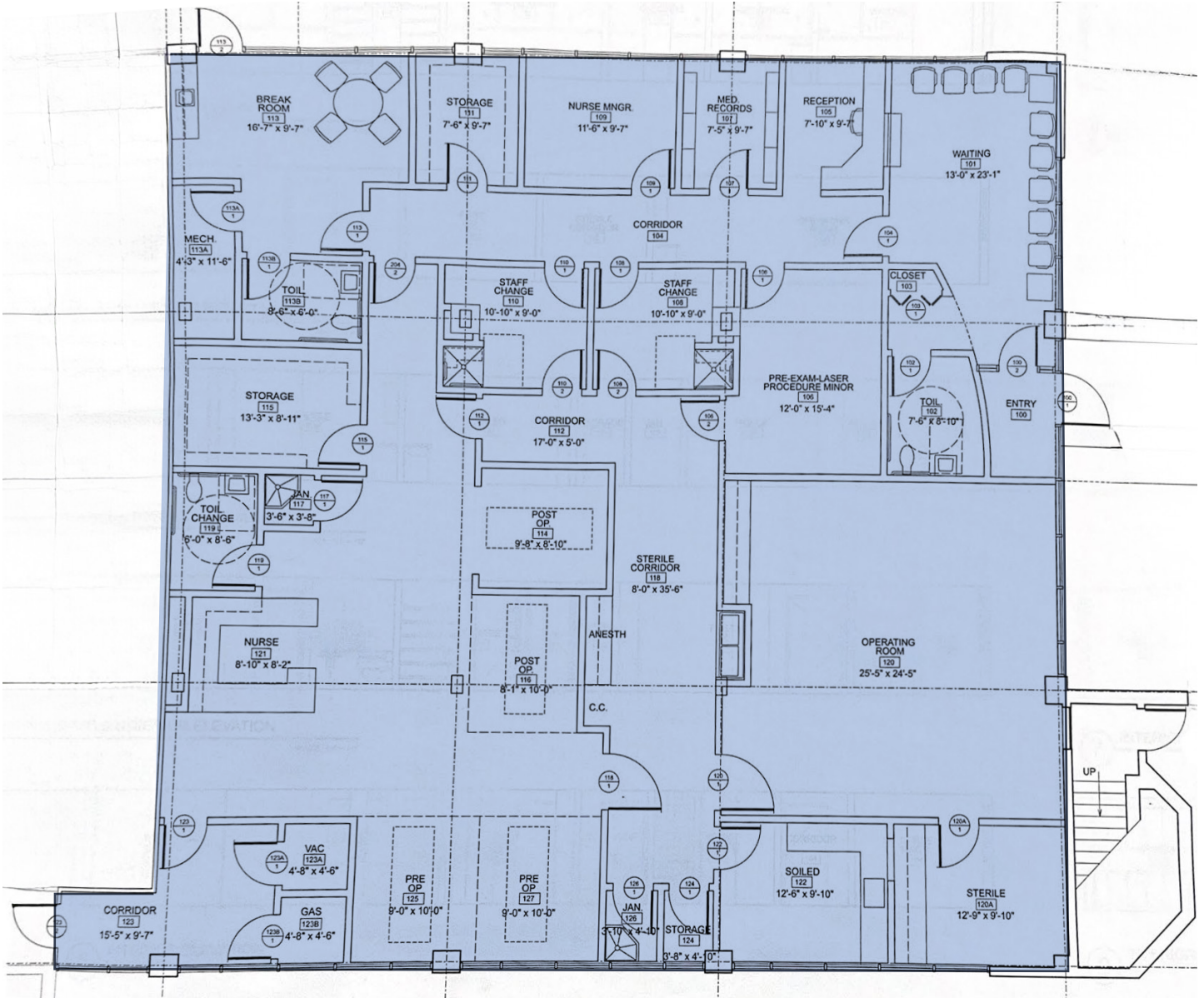
Connor Wrightson
Senior Associate
301.417.1088
connor.wrightson@avisonyoung.com

11921 Rockville Pike
Suite 200
Rockville, MD 20852
301.948.9870

3200 Tower Oaks Boulevard | Suite 100

5,800 RSF

Floor Plan



For more information, contact:

Robert C. Dickman
Principal
301.417.1091
Bob.dickman@avisonyoung.com

Robert Wrightson
Senior Vice President
301.417.1063
bob.wrightson@avisonyoung.com

Connor Wrightson
Senior Associate
301.417.1088
connor.wrightson@avisonyoung.com

11921 Rockville Pike
Suite 200
Rockville, MD 20852
301.948.9870

3200 Tower Oaks Boulevard Surgery Center Photos



Pre op area



Nurse station



Staff break Room



Waiting area

For more information, contact:

Robert C. Dickman
Principal
301.417.1091
Bob.dickman@avisonyoung.com

Robert Wrightson
Senior Vice President
301.417.1063
bob.wrightson@avisonyoung.com

Connor Wrightson
Senior Associate
301.417.1088
connor.wrightson@avisonyoung.com

11921 Rockville Pike
Suite 200
Rockville, MD 20852
301.948.9870