

FOR SALE

9723 Airport Boulevard, Mobile, AL 36608

**4.69 Acres with 370' Frontage on Airport Blvd,
Just East of Snow**



Pratt Thomas, CCIM
Pratt@MerrillPThomasCo.com
Cell: 251-367-8358
Off: 251-476-0808
3280 Dauphin Street
Suite C 104
Mobile, AL 36606

MerrillPThomasCo.com

The information given herewith is obtained from sources the agent considers reliable, however, agent is not responsible for misstatements of facts, errors, or omissions. Purchaser must satisfy self of accuracy of any statement or projection. All figures are approximate.

Property Description

4.69 Acres Available on Airport Blvd, just East of Snow Road

365' of frontage on Airport Boulevard at the intersection of Snow Road. Five lots have already sold. Airport 1 Self Storage, a 450-unit climate controlled self storage facility, Phase II has been completed, and a 7,500± SF medical building have recently been completed.

Strong demographics, good exposure, and high traffic counts, with full access to East and West bound traffic in a growing West Mobile community. Trade area includes areas in Mississippi as well.

- * No Zoning!
- * Daily Traffic Count - 19,310
- * Seller is willing to re-subdivide available lots and will build to suit.
- * Property shares a common detention area.
- * Owners are licensed Alabama real estate brokers.

At A Glance

9723 Airport Blvd,
Mobile, AL 36608



Size - 4.69 Acres
Sq Ft - 204,296
Will Subdivide



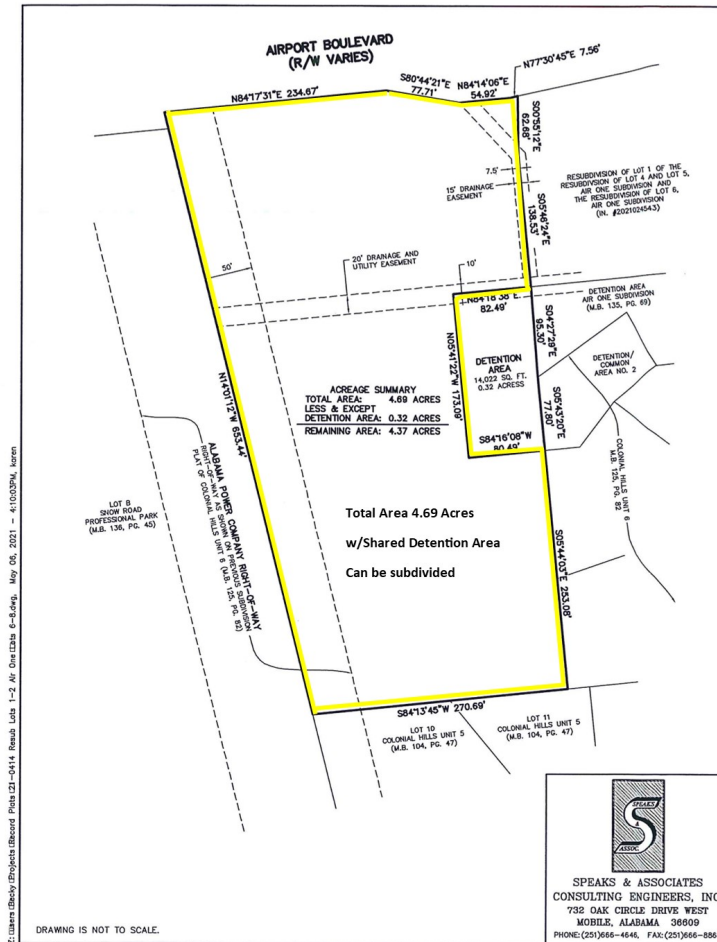
Sale Price - \$1,480,000



Visibility - 370' Frontage
Excellent Visibility

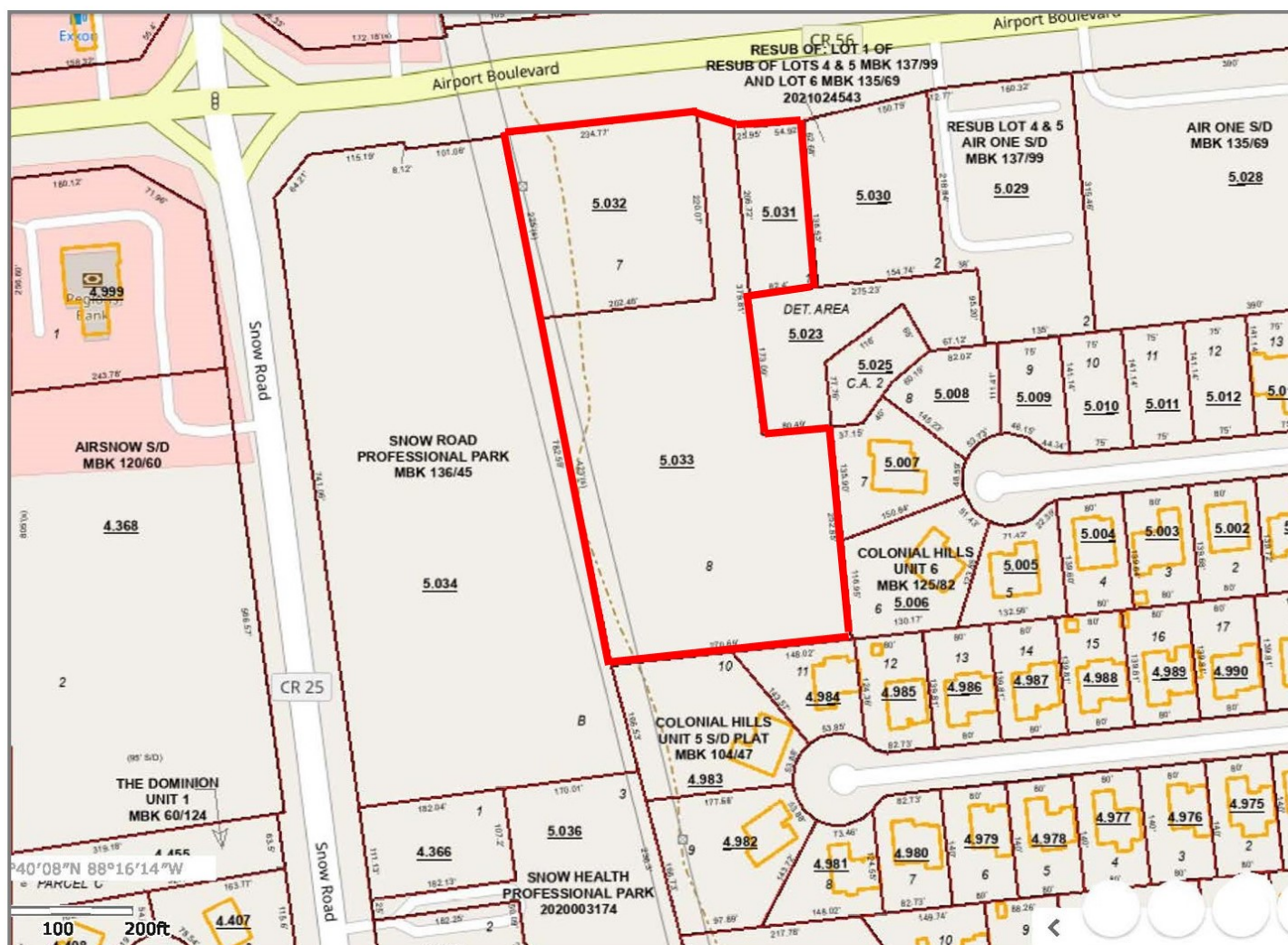


Property Survey





Tax Plat





Lot Dimensions





Demographics 2022

