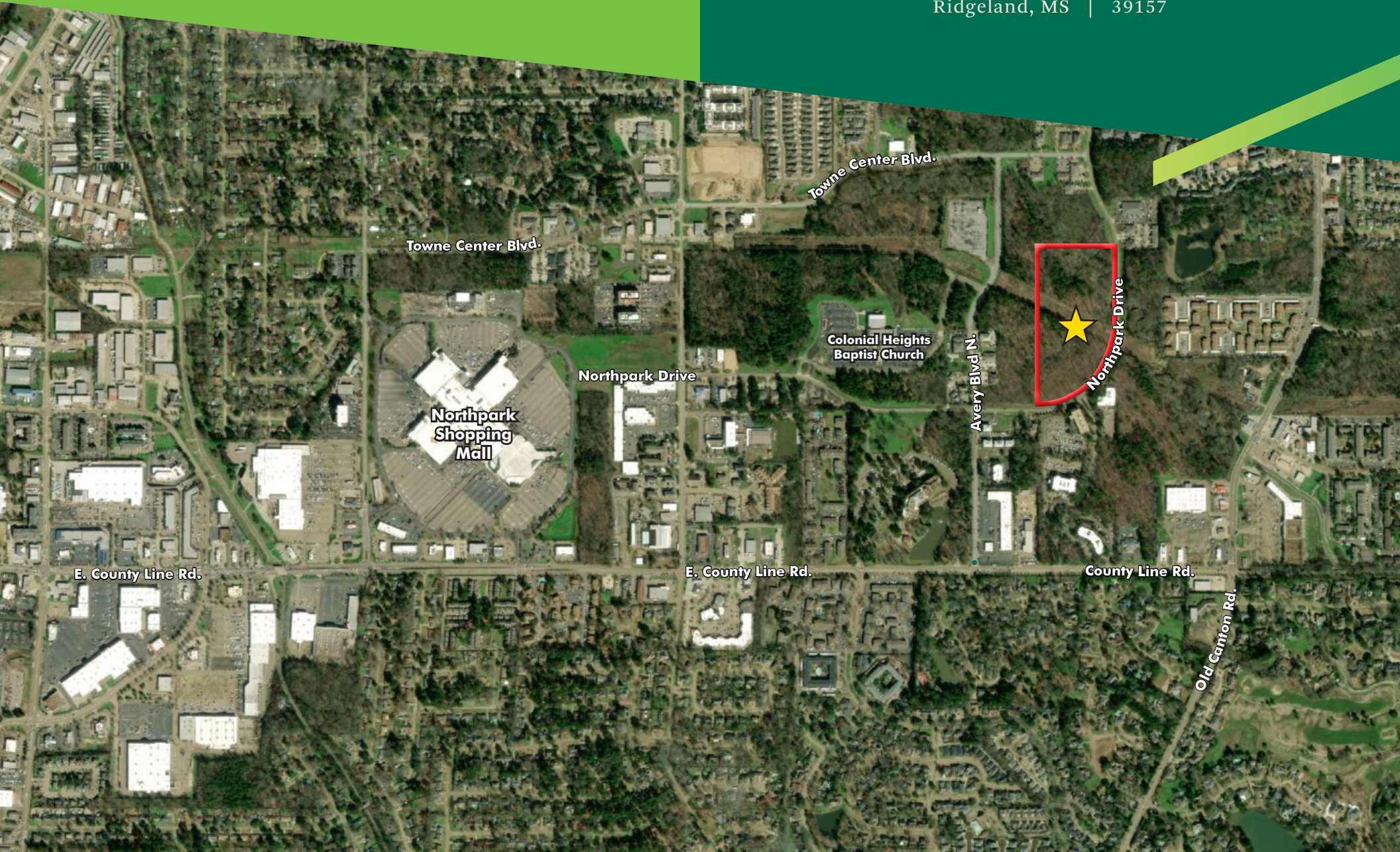


**FOR SALE**  
**PRICE REDUCED - DEVELOPMENT OPPORTUNITY**

# NORTH PARK DRIVE

Ridgeland, MS | 39157



## PROPERTY FEATURES

- + 15.97± acres
- + Opportunity Zone in the city of Ridgeland, MS in Madison County
- + Close proximity to County Line Road, Old Canton Road and Lake Harbour Drive - easy access to I-55 north and south, Highway 51 and other major arteries in the metro area
- + Future use potentials include church or office campus, retail, hospitality, medical/senior living facility development
- + Tax ID: 0721-032A-005/01.00
- + Zoning: C-2
- + Asking Price: \$525,000.00



## PLEASE CONTACT:

### GUY PARKER III, CCIM

Vice President  
+1 601 936 7135  
guy.parker@cbre.com

### RICHARD RIDGWAY

Senior Vice President  
+1 601 936 7132  
richard.ridgway@cbre.com

© 2021 CBRE, Inc. All rights reserved. This information has been obtained from sources believed reliable, but has not been verified for accuracy or completeness. You should conduct a careful, independent investigation of the property and verify all information. Any reliance on this information is solely at your own risk. CBRE and the CBRE logo are service marks of CBRE, Inc. All other marks displayed on this document are the property of their respective owners, and the use of such logos does not imply any affiliation with or endorsement of CBRE. Photos herein are the property of their respective owners. Use of these images without the express written consent of the owner is prohibited.