



M E R I D I A N

147 S. CHERRY STREET, SUITE 200 | WINSTON-SALEM, NC 27101 | P 336.722.1986 | F 336.723.3173 | MERIDIANREALTY.COM

83± Acres in Roanoke Rapids with Outparcels

Hwy 158 at I-95

Roanoke Rapids, NC 27890



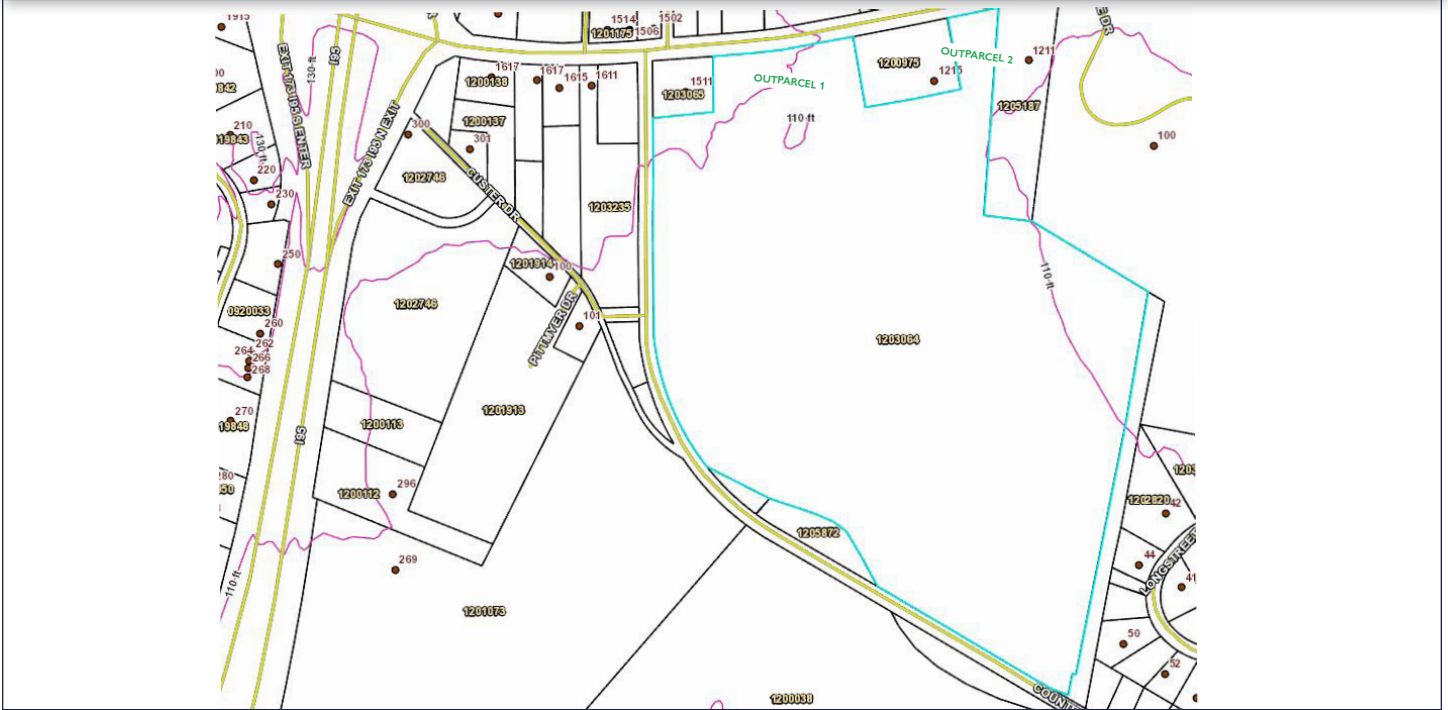
83± acres in the heart of Roanoke Rapids just across I-95 (43,500± VPD) from Wal-Mart. Ideal for a master planned retail or mixed use development but with 83± cleared, level acres the property lends itself to all uses (office, industrial park, institutional, etc). Buffered by I-95, Hwy 158, Community College & Country Club.

For more information:

Charlie H. Fulk, CCIM
Cfulk@meridianrealty.com
336.480.2089

FOR SALE: \$125k /AC
OUTPARCELS: FROM \$900k /AC

CONTOUR MAP - LEVEL



BIRD'S EYE



Original image provided by Halifax County Economic Development Commission.

No warranty or representation (express or implied) is made as to the accuracy or completeness of the information set forth herein. All information is submitted subject to errors, omissions, change of price, prior lease or sale, and withdrawal without notice. All marketing material produced by the Meridian Realty Group is proprietary. Any reproduction is expressly prohibited.



THE MERIDIAN REALTY GROUP | 147 S. CHERRY STREET, SUITE 200 | WINSTON-SALEM, NC 27101
P 336.722.1986 | F 336.723.3173