

Retail Suite For Lease in Historic Building

1500 PEARL STREET | BOULDER, CO
UNIT E

Size: 980 SF

Rate: Negotiable

Available: Now



CLICK HERE
for virtual tour

RETAIL BUZZ

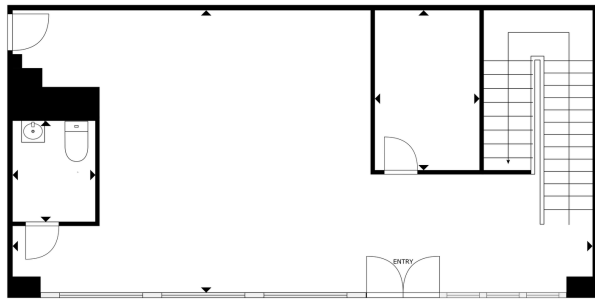
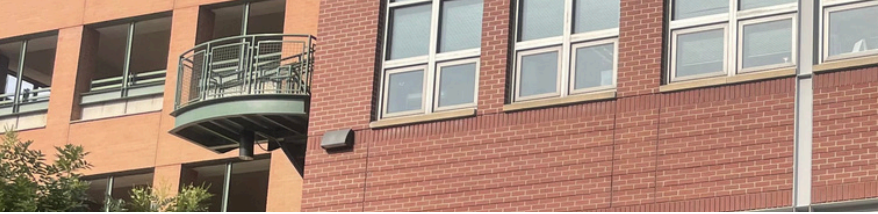
When the City's your landlord, you get perks you don't usually see in the wild world of retail. This Pearl Street storefront comes with all the charm of Boulder's busiest corridor—minus the sky-high rent. Retail like a local, with support that's as stable as the sandstone. Plus, you're steps away from nonstop foot traffic, beloved neighbors, and that classic Pearl Street buzz.

PROPERTY HIGHLIGHTS:

- Great downtown location
- Adjacent to a City parking garage
- Large mezzanine space
- Great light
- Flexible lease terms

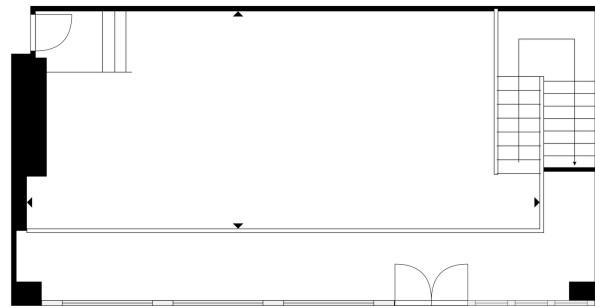


LEARN MORE ABOUT THIS PROPERTY
MarketRealEstate.com

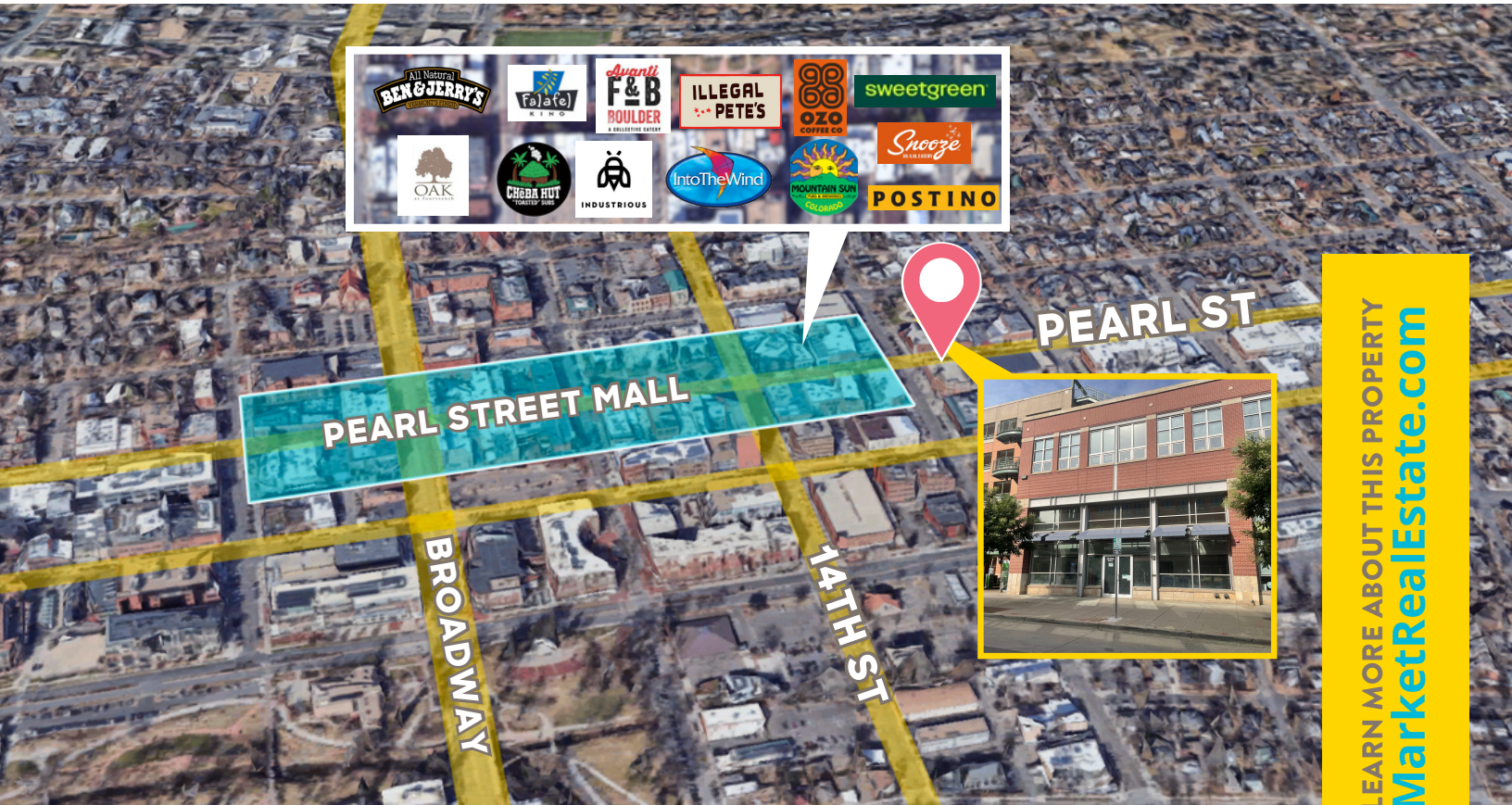


MAIN FLOOR

CLICK HERE
for virtual tour



MEZZANINE



LEARN MORE ABOUT THIS PROPERTY
MarketRealEstate.com

NATE LITSEY
303 444 4024
Nate@MarketRealEstate.com

TODD WALSH, CCIM
303 444 5040
Todd@MarketRealEstate.com