

SIENA PAVILION VI

FOR LEASE
MEDICAL OFFICE BUILDING

2865 SIENA HEIGHTS DRIVE, HENDERSON, NV 89052



TONYA GOTTESMAN

Vice President
Lic. S.0189043
T +1 702 369 4882
C +1 310 612 3592
Tonya.gottesman@cbre.com

RYAN MARTIN, SIOR, CCIM

Senior Vice President
Lic. BS 0048284
T +1 702 369 4881
C +1 702 630 2671
ryan.martin@cbre.com

MICHAEL K. HSU

First Vice President
Lic. S.51609.LLC
T +1 702 369 4866
C +1 702 768 6459
michael.hsu@cbre.com

CBRE

2

Property Highlights

The property, known as Siena Medical Pavilion VI, is a top-tier medical building situated at the intersection of Eastern Avenue and St. Rose Parkway. It is centrally located in the Henderson Medical Corridor.

- Prime location across from Dignity Health - St. Rose Dominican Hospital Siena Campus and close proximity to UHS's West Henderson Hospital
- Move-in ready medical spec suites or custom-designed suites
- Generous tenant improvement allowance available



LEASE RATE

\$2.65 PSF/Month, NNN



SQUARE FEET

±511 - ±5,381 RSF

SUITE #	RSF	CONDITION
Suite 240	±511 RSF	Built Out
Suite 260	±3,366 RSF	Shell Space
Suite 300	±5,381 RSF	Can be redesigned for a tenant's desired layout. Currently 2nd gen office.



MULTI-TENANT MEDICAL OFFICE BUILDING

2865 SIENA HEIGHTS DRIVE, HENDERSON, NV

CBRE

3

Property Overview



PROPERTY NAME
Siena Medical Pavilion VI



IDEAL USE
Medical



BUILDING SIZE
±62,140 SF



OF FLOORS
3



ZONING
CO (Henderson)



ESTIMATED CAMS 2024
\$0.94/SF



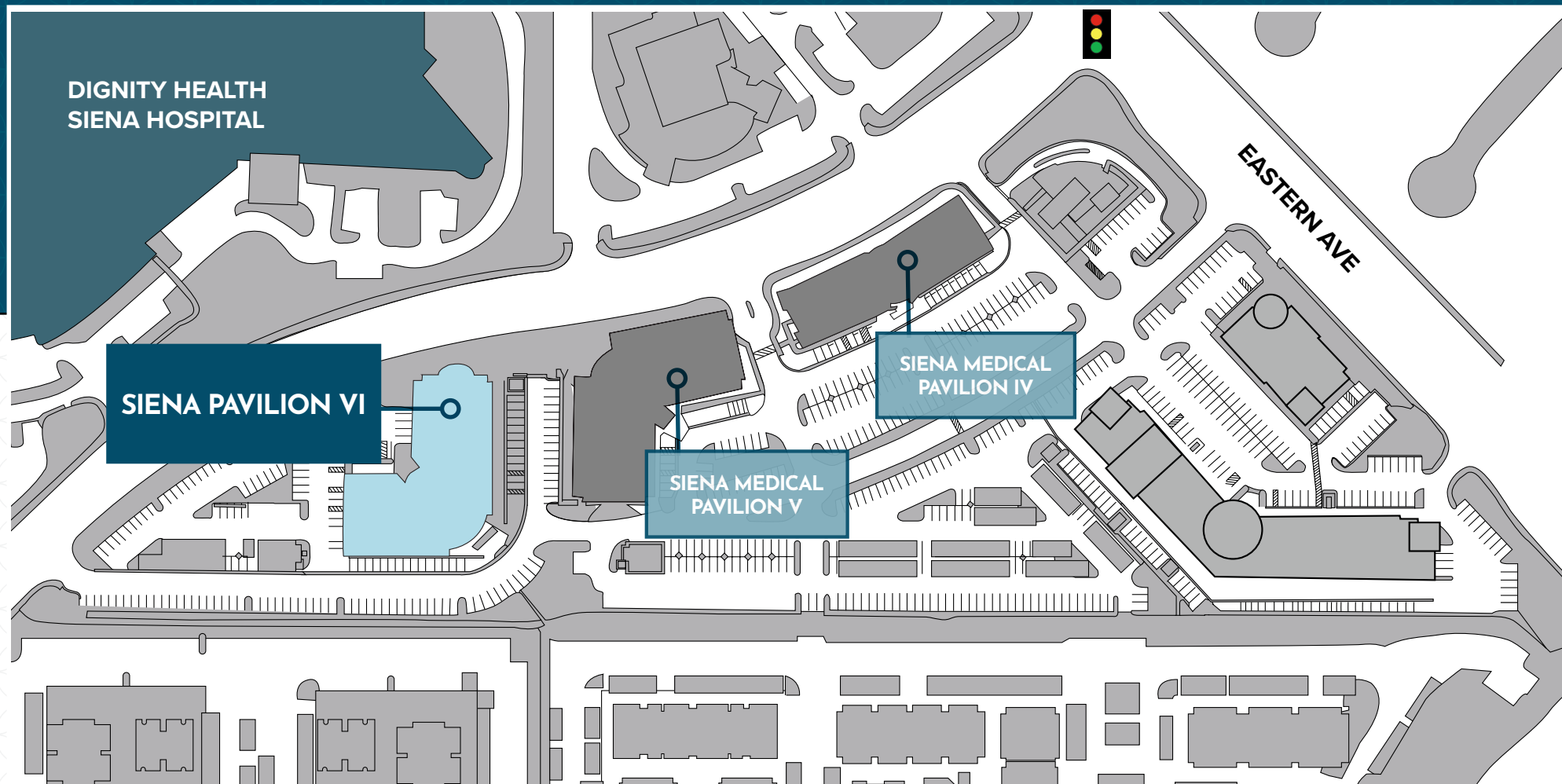
GENEROUS TI ALLOWANCE
for customized floor plan



PARKING RATIO
4.50/1000

4

Site Plan



5

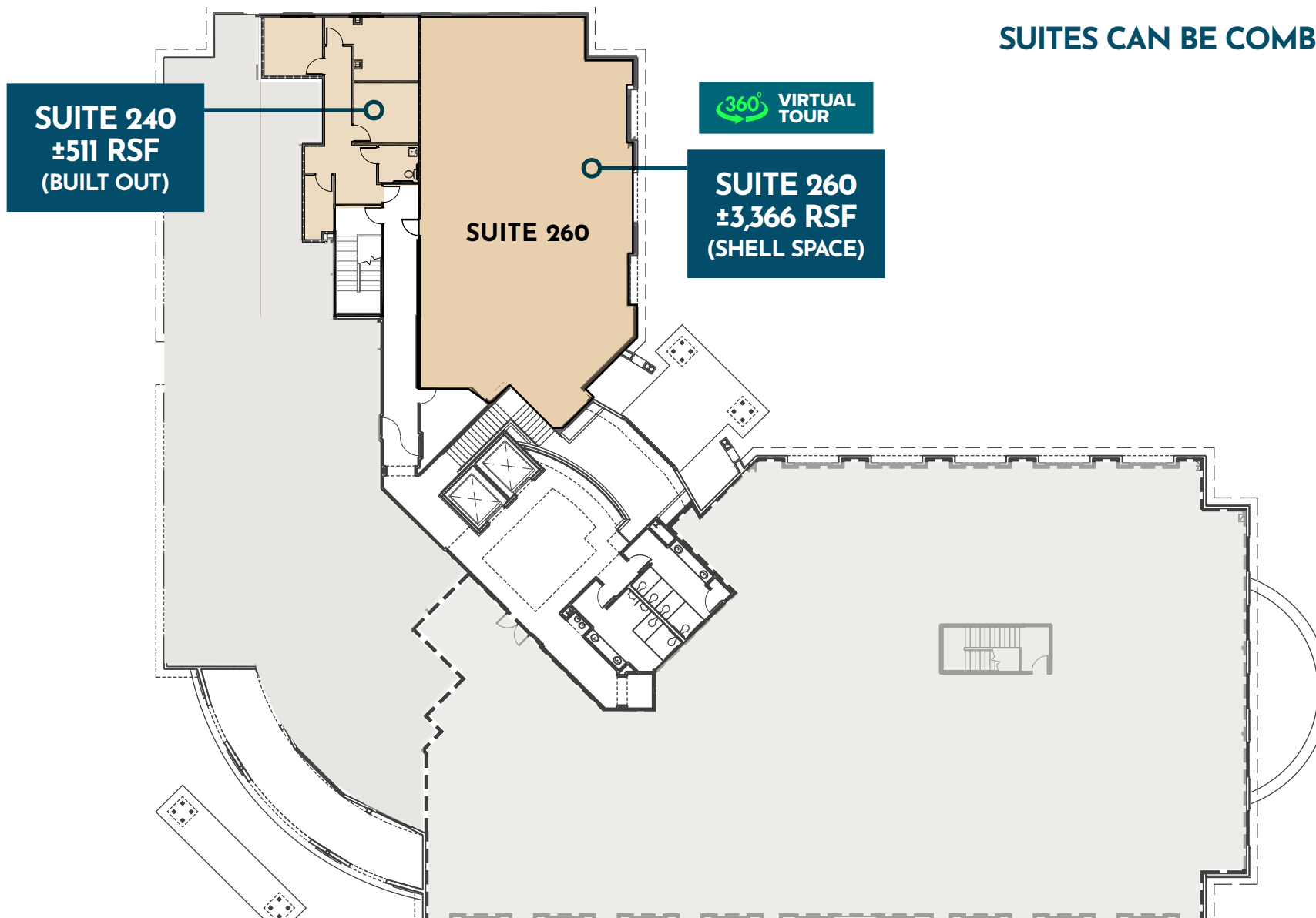
Suite 240 & 260

AVAILABLE

SUITE 240 | ±511 RSF (BUILT OUT)

SUITE 260 | ±3,366 RSF (SHELL SPACE)

SUITES CAN BE COMBINED





Suite 300

AVAILABLE
SUITE 300 | ±5,381 RSF
(2ND GEN OFFICE)



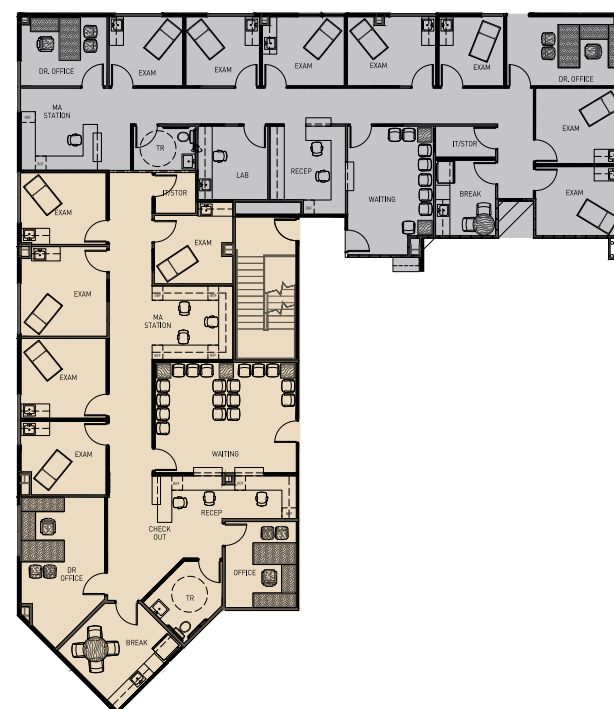
ORIGINAL FLOOR PLAN



PROPOSED SPEC PLAN A

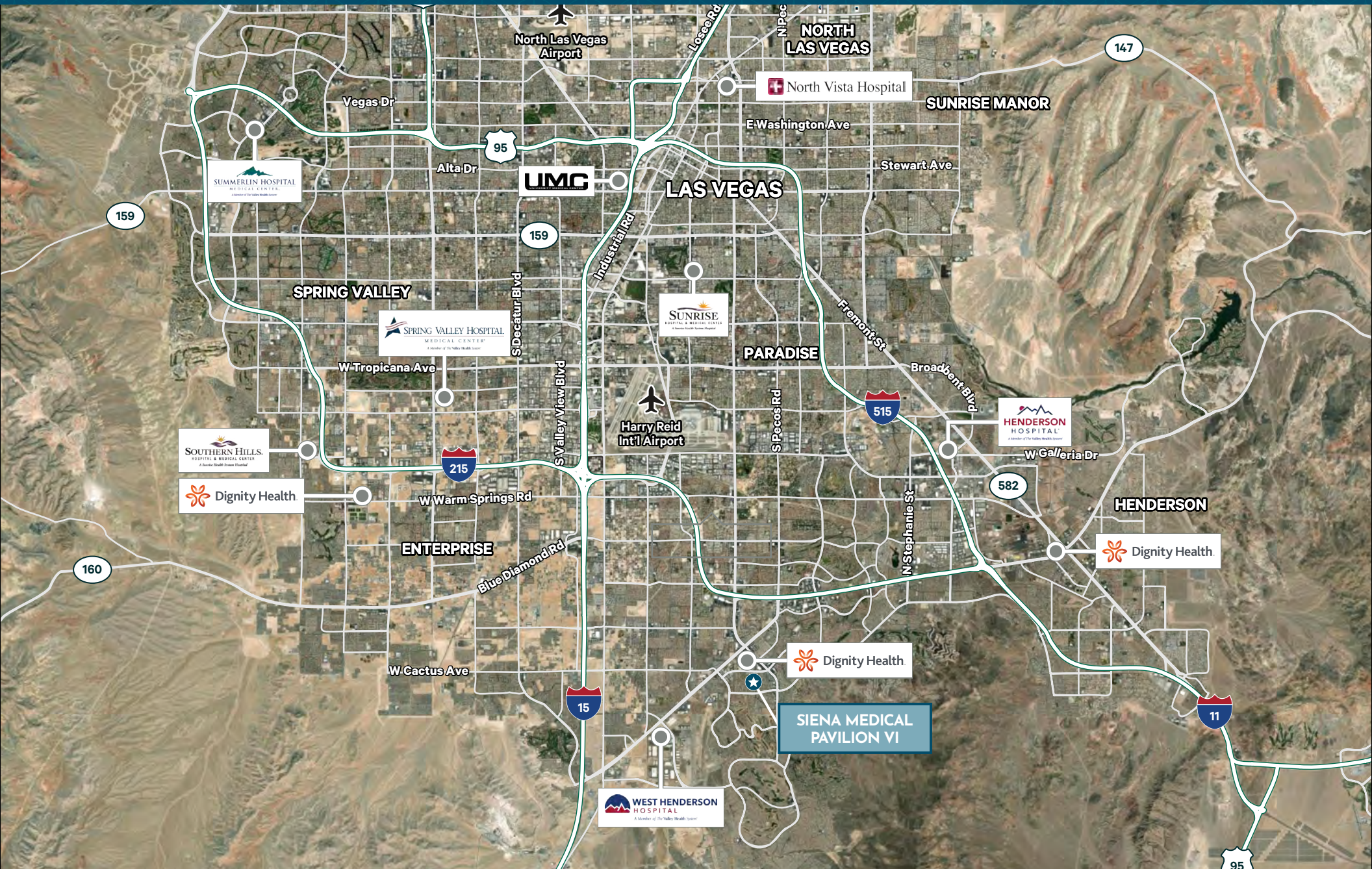


PROPOSED SPEC PLAN B





Hospital Map





Area Demographics

	1 Mile	3 Miles	5 Miles
POPULATION			
2023 Population - Current Year Estimate	23,060	149,981	314,341
2028 Population - Five Year Projection	23,986	155,135	327,194
2023-2028 Annual Population Growth Rate	0.79%	0.68%	0.80%
2023 Median Age	36.30	40.20	40.80
HOUSEHOLDS			
2023 Households - Current Year Estimate	9,995	61,089	129,240
2023-2028 Annual Household Growth Rate	1.08%	0.93%	1.02%
HOUSEHOLD INCOME			
2023 Average Household Income	\$105,111	\$115,468	\$118,193
2028 Average Household Income	\$124,039	\$134,017	\$137,559
2023 Median Household Income	\$68,310	\$80,120	\$82,542
2028 Median Household Income	\$81,808	\$93,512	\$97,164
DAYTIME POPULATION			
2023 Daytime Population	28,661	134,041	280,130



Healthcare Expenditures

(5 Mile Radius)

\$1.0B

Total Annual
Healthcare

\$198M

Total Annual
Medical Services

\$65M

Total Annual
Dental Care

\$13M

Total Annual
Eye Care

\$11M

Total Annual
Lab Test

\$40M

Total Annual
Physician Services

2865 SIENA HEIGHTS DRIVE, HENDERSON, NV

The medical services in Las Vegas, NV offer a wide range of healthcare options. Services include primary care physicians, specialists, urgent care centers, hospitals, and medical clinics. Las Vegas is home to several renowned hospitals and medical centers. With a diverse healthcare landscape, Las Vegas ensures access to quality medical services for its population.



10 Siena Medical Pavilion VI



SIENA PAVILION VI

FOR LEASE

MEDICAL/OFFICE BUILDING

2865 SIENA HEIGHTS DRIVE, HENDERSON, NV 89052



CONTACT

TONYA GOTTESMAN

Vice President
Lic. S.0189043
T +1 702 369 4882
C +1 310 612 3592
Tonya.gottesman@cbre.com

RYAN MARTIN, SIOR, CCIM

Senior Vice President
Lic. BS 0048284
T +1 702 369 4881
C +1 702 630 2671
ryan.martin@cbre.com

MICHAEL K. HSU

First Vice President
Lic. S.51609.LLC
T +1 702 369 4866
C +1 702 768 6459
michael.hsu@cbre.com

© 2025 CBRE, Inc. All rights reserved. This information has been obtained from sources believed reliable, but has not been verified for accuracy or completeness. You should conduct a careful, independent investigation of the property and verify all information. Any reliance on this information is solely at your own risk. CBRE and the CBRE logo are service marks of CBRE, Inc. All other marks displayed on this document are the property of their respective owners, and the use of such logos does not imply any affiliation with or endorsement of CBRE. Photos herein are the property of their respective owners. Use of these images without the express written consent of the owner is prohibited. Some content was originally generated by GenAI and modified by the author.

CBRE