



6200 S MCCLINTOCK DR.
Tempe, AZ



Medical and Dental Suites Available For Immediate Occupancy

Kathleen Morgan

Managing Director

1 602 809 1048

kathleen.morgan@transwestern.com

Kevin Smigiel

Vice President

1 602 550 9295

kevin.smigiel@transwestern.com

Vince Femiano

Managing Director

1 602 791 3310

vince.femiano@transwestern.com

Andrew Olivet

Associate

1 602 370 2685

andrew.olivet@transwestern.com

The information provided herein was obtained from sources believed reliable; however, Transwestern makes no guarantees, warranties or representations as to the completeness or accuracy thereof. The presentation of this property is submitted subject to errors, omissions, change of price or conditions, prior sale or lease, or withdrawal without notice. Copyright © 2026 Transwestern.



Available Medical & Dental Suites



\$18.00 NNN
3% Annual Increase

- **Suite II0:** ±1,663 RSF
- **Suite II3:** ±1,755 RSF



Available for **Immediate Occupancy**

Kathleen Morgan
 Managing Director
 1 602 809 1048
 kathleen.morgan@transwestern.com

Kevin Smigiel
 Vice President
 1 602 550 9295
 kevin.smigiel@transwestern.com

Vince Femiano
 Managing Director
 1 602 791 3310
 vince.femiano@transwestern.com

Andrew Olivet
 Associate
 1 602 370 2685
 andrew.olivet@transwestern.com





Available for **Immediate Occupancy**

Kathleen Morgan

Managing Director

1 602 809 1048

kathleen.morgan@transwestern.com

Kevin Smigiel

Vice President

1 602 550 9295

kevin.smigiel@transwestern.com

Vince Femiano

Managing Director

1 602 791 3310


vince.femiano@transwestern.com

Andrew Olivet

Associate

1 602 370 2685

andrew.olivet@transwestern.com

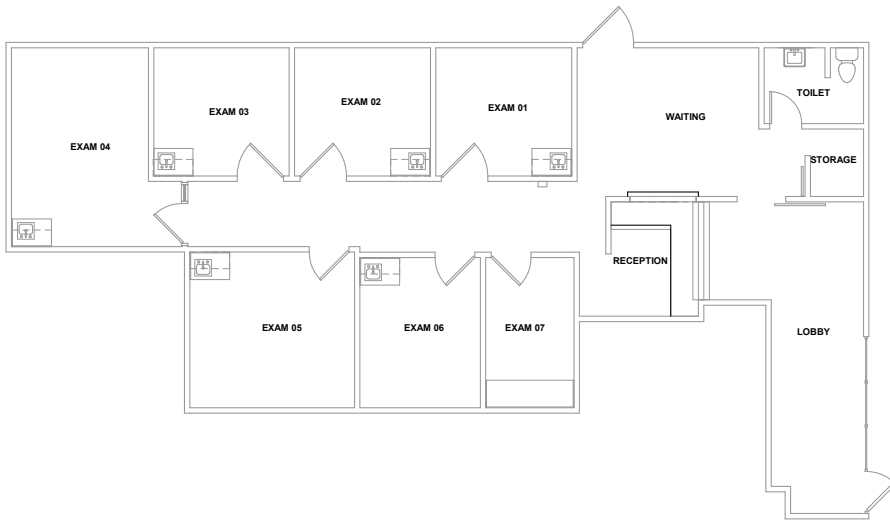
 **Transwestern**

Available For

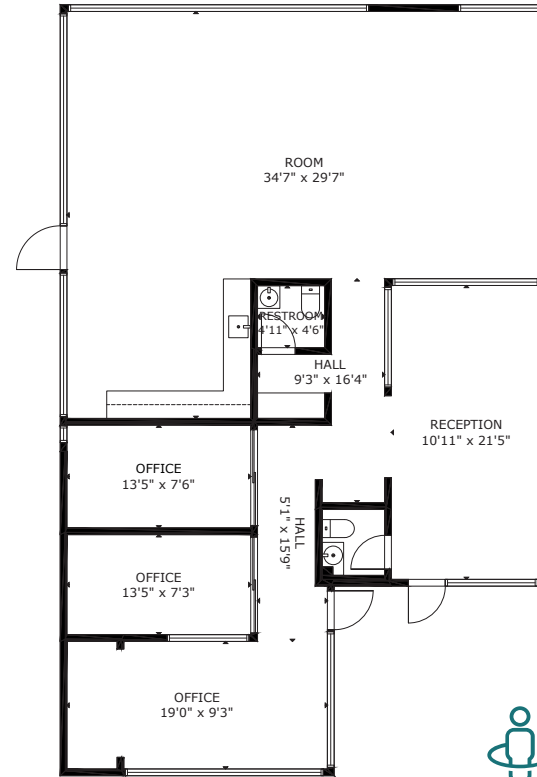
Immediate Occupancy



▪ Suite II0: ±1,663 RSF



▪ Suite II3: ±1,755 RSF



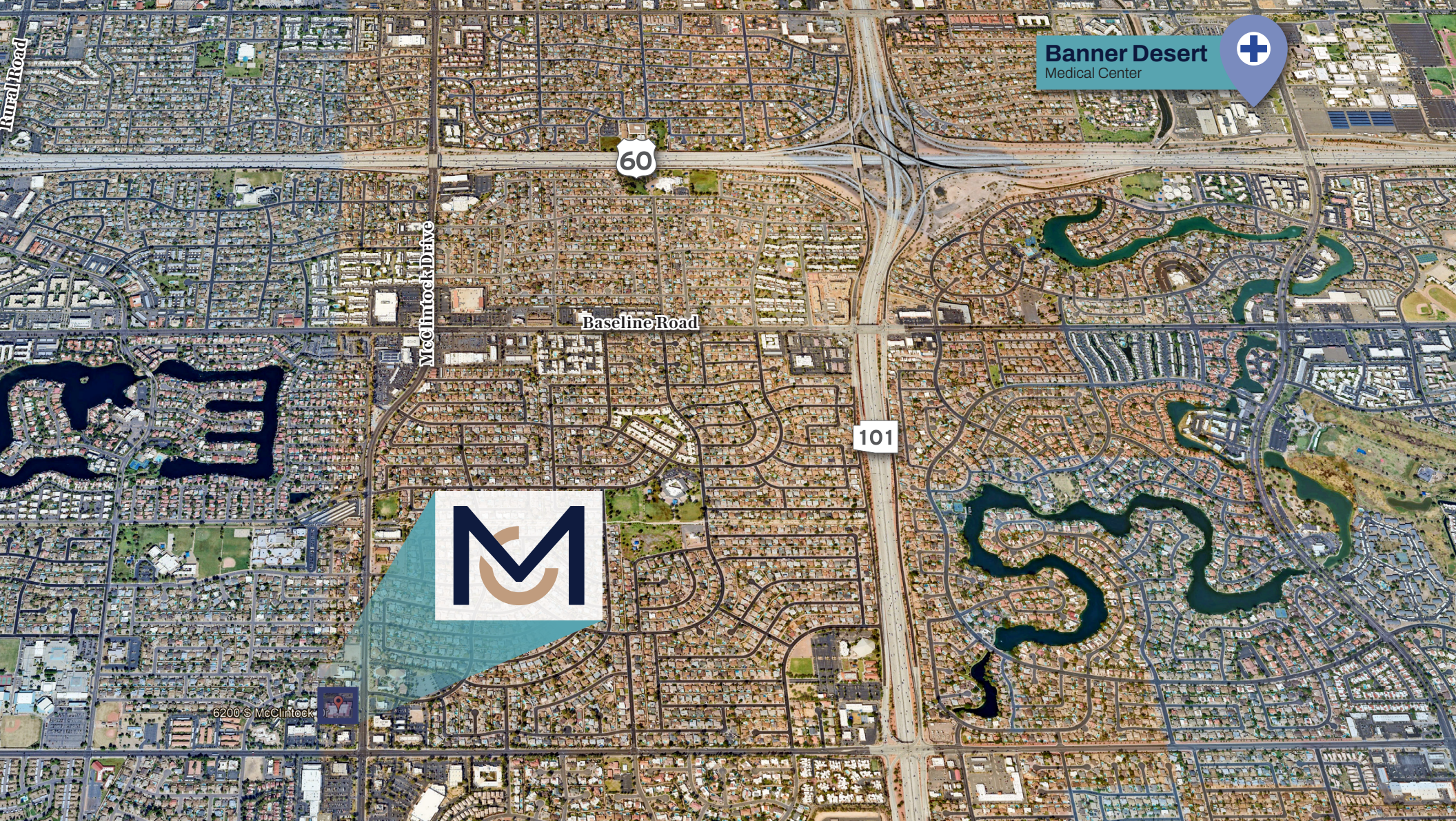
Kathleen Morgan
Managing Director
1 602 809 1048
kathleen.morgan@transwestern.com

Kevin Smigiel
Vice President
1 602 550 9295
kevin.smigiel@transwestern.com

Vince Femiano
Managing Director
1 602 791 3310
vince.femiano@transwestern.com

Andrew Olivet
Associate
1 602 370 2685
andrew.olivet@transwestern.com





Banner Desert
Medical Center



What We Offer at McClintock Medical & Dental Building 6200 S McClintock Dr. Tempe, AZ



Easy Access
to Loop 101 and U.S. 60



Synergistic Tenant Mix
including Imaging, Family
Practice, and Physical Therapy



Proximity to Hospitals
including Tempe St. Luke's
(5.1 miles) and Banner Desert Medical
Center (3.7 miles)



Garden-Style Office
with Covered Courtyard



Parking Ratio 5.1:1,000
with Covered (fee) and Uncovered
Courtyard Parking Available