

Work with character.

FAMILY
COURT

EST. 1916

OWNED AND MANAGED BY

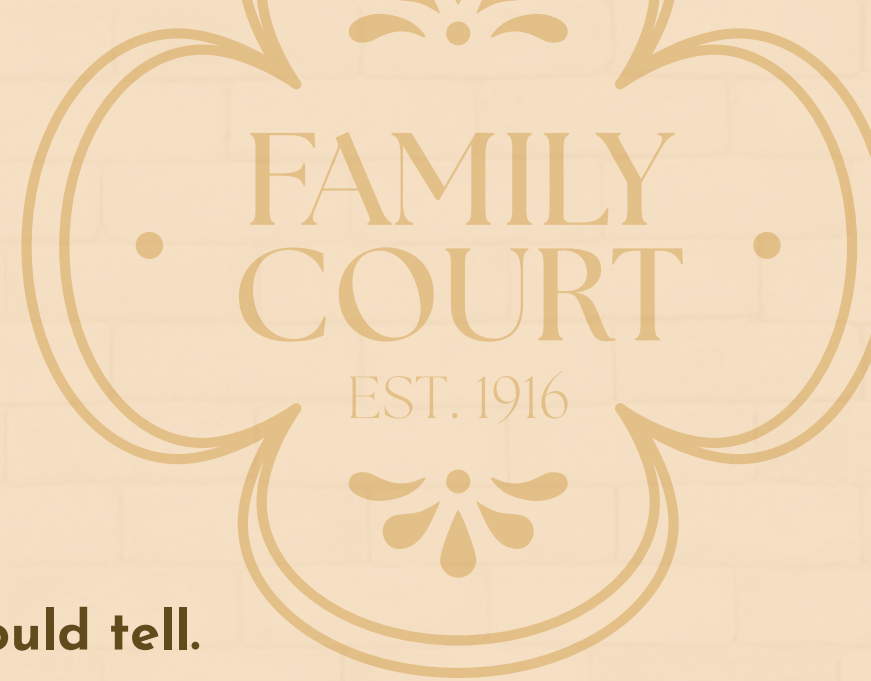


130 S. Main Street | Downtown Greenville

2,137 SF - 7,257 SF RETAIL / OFFICE SPACE AVAILABLE



Work with a story.



The stories this building could tell.

Downtown's Family Court building was Greenville's seat of law and local government in the early 20th century for the important work that helped build future success for Greenville.

Today, it's a local landmark and still a part of our city's success, home to the beloved M. Judson Booksellers, businesses, and services.

Building Details

3rd Floor: 7,257 SF available for retail or office

Historic former courtroom full of character with high ceilings, mezzanine, large windows that flood the space with light.

Contact Broker for Pricing

7th Floor: 2,137 SF available for office

Rare full-floor opportunity for smaller users; private lobby and reception, breakroom, and 5 offices on the glass. Ideal for law firms and financial services.

\$28 per SF, Full Service





3rd Floor Interior



Stairs to 3rd Floor



3rd Floor - Mezzanine



3rd Floor Interior

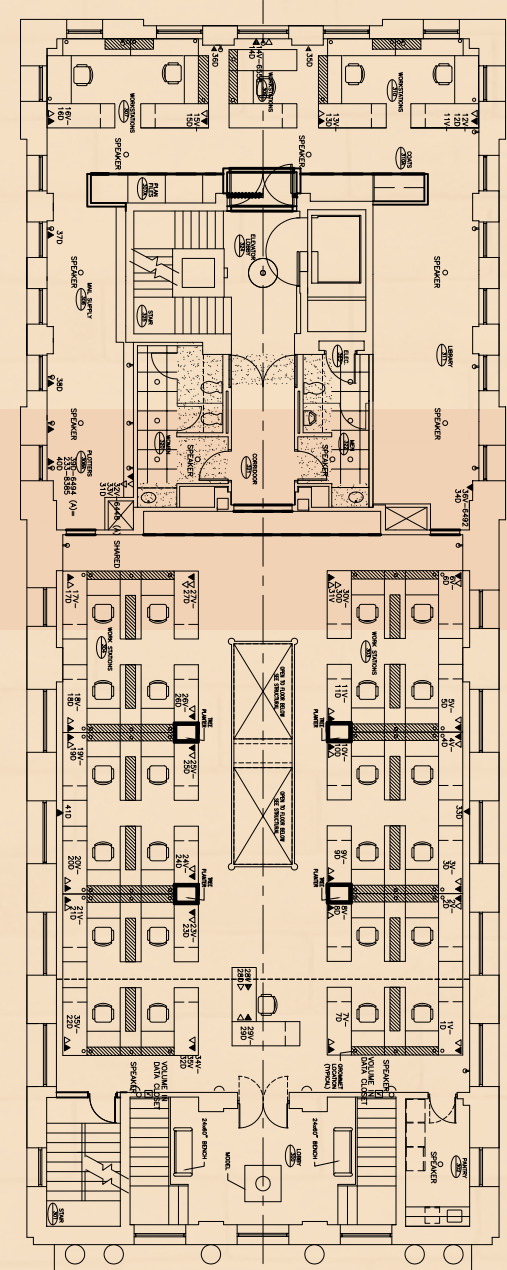
Work with flexibility.

ILY
RT
16



7th Floor
2,137 SF

3rd Floor
7,257 SF



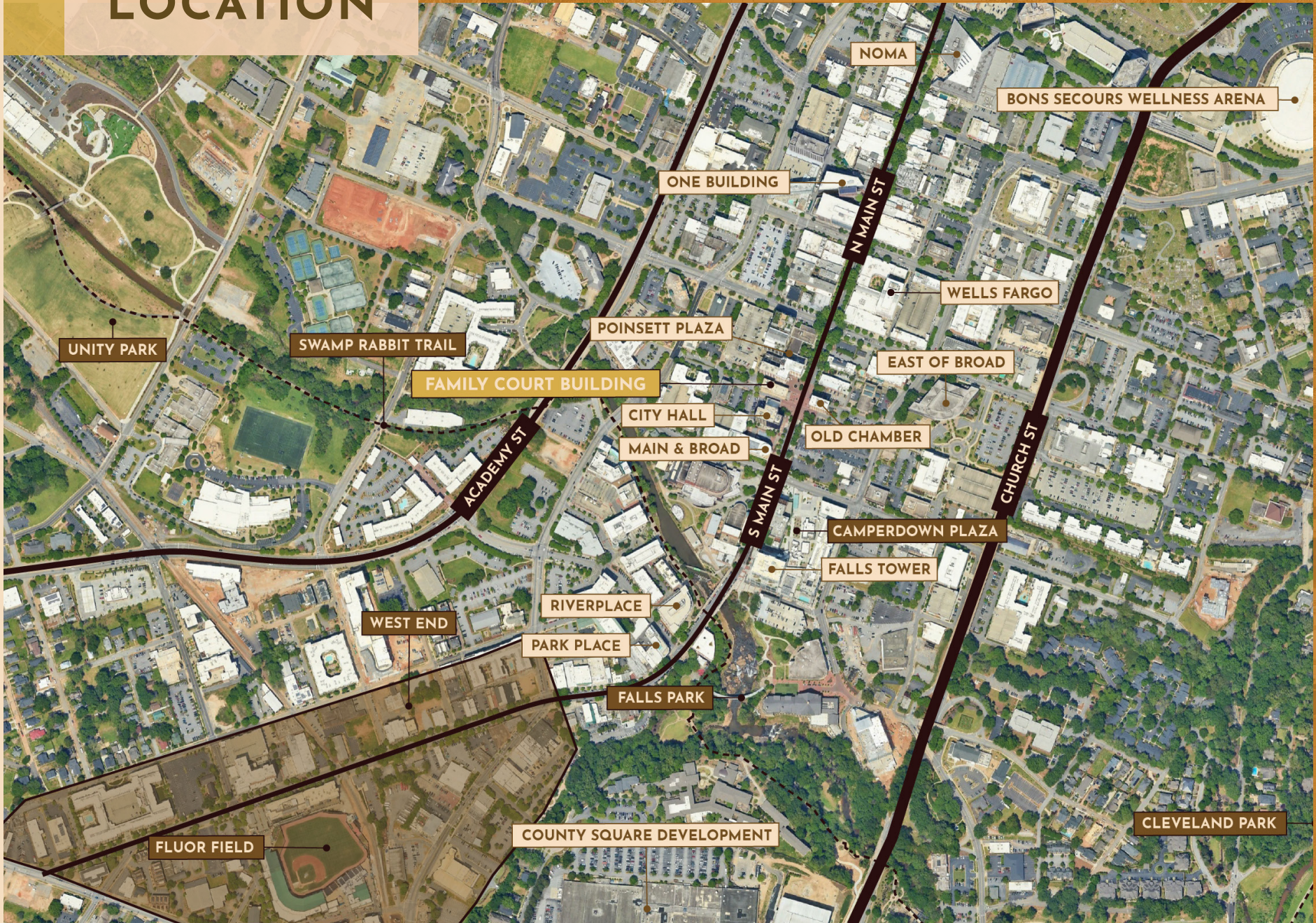
Test Fit

Work with convenience.

AMENITIES



LOCATION



Work with experts.

To tour available space or learn more about
Family Court, contact Trinity Partners.

Grayson Burgess, CCIM, SIOR

Senior Brokerage Associate
gburgess@trinity-partners.com
864.770.3288

Edward Wilson, CCIM, SIOR, MCR

Managing Partner
ewilson@trinity-partners.com
803.7528.3574

Rakan Draz

Senior Brokerage Associate, Retail
rdraz@trinity-partners.com
864.905.7635

FAMILY
COURT

EST. 1916



OWNED AND MANAGED BY



LEASED BY

