

**CODE DATA**

APPLICABLE CODES	
2020 FBC	FLORIDA BUILDING CODE, BUILDING – 7TH EDITION
2020 FBC	FLORIDA BUILDING CODE, MECHANICAL – 7TH EDITION
2020 FBC	FLORIDA BUILDING CODE, PLUMBING – 7TH EDITION
2020 FBC	FLORIDA BUILDING CODE, ENERGY CONSERVATION – 7TH EDITION
2020 FBC	FLORIDA BUILDING CODE, FUEL GAS – 7TH EDITION
2020 FBC	FLORIDA BUILDING CODE, ACCESSIBILITY – 7TH EDITION
2020 FFPC	FLORIDA FIRE PREVENTION CODE – 7TH EDITION WITH NFPA 1 AND NFPA 101 FLORIDA SPECIFIC AMENDMENTS
2017 NEC	NATIONAL ELECTRICAL CODE

CHAPTER 3 USE AND OCCUPANCY CLASSIFICATION		
MIXED USE – NOT SEPARATED		
SECTION	DESCRIPTION	AREA
309.1	MERCANTILE GROUP M, SALES AND BUSINESS USE	966 SF
311.2	MODERATE-HAZARD STORAGE, GROUP S-1, SERVICE GARAGE – AS PER SECTION – 406.8 REPAIR GARAGES.	4,529 SF
311.2	MODERATE-HAZARD STORAGE, GROUP S-1, TIRE STORAGE	747 SF
NO	OCCUPANCY COVERED ENTRY	452 SF
TOTAL BUILDING AREA		6,694 SF

CHAPTER 4 SPECIAL DETAILED REQUIREMENTS BASED ON USE AND OCCUPANCY		
SECTION	DESCRIPTION	
406.8	REPAIR GARAGES, GROUP S-1, MECHANICAL VENTILATION – NOT REQUIRED, PER 2017 FBC MECHANICAL 502.14 MOTOR VEHICLE OPERATION, EXCEPTION 3	

CHAPTER 5 GENERAL BUILDING HEIGHTS AND AREAS			
TABLE 504.3 ALLOWABLE BUILDING HEIGHT IN FEET ABOVE GRADE PLANE			
OCCUPANCY CLASSIFICATION	TYPE OF CONSTRUCTION	TYPE V-B	PROPOSED BUILDING HEIGHT
M, S-1	NS		
	BUILDINGS NOT EQUIPPED THROUGHOUT WITH AN AUTOMATIC SPRINKLER SYSTEM	40'-0"	28'-0"

TABLE 504.4 ALLOWABLE NUMBER OF STORIES ABOVE GRADE PLANE			
OCCUPANCY CLASSIFICATION	TYPE OF CONSTRUCTION	TYPE V-B	PROPOSED
M, S-1	NS		
	BUILDINGS NOT EQUIPPED THROUGHOUT WITH AN AUTOMATIC SPRINKLER SYSTEM	1	1

TABLE 506.2 ALLOWABLE AREA FACTOR IN SQUARE FEET			
OCCUPANCY CLASSIFICATION	TYPE OF CONSTRUCTION	TYPE V-B	PROPOSED
M, S-1	NS		
	BUILDINGS NOT EQUIPPED THROUGHOUT WITH AN AUTOMATIC SPRINKLER SYSTEM	9,000	6,690

CHAPTER 6 TYPES OF CONSTRUCTION	
ONE STORY, SINGLE OCCUPANCY, MASONRY LOAD BEARING WALLS WITH STEEL ROOF STRUCTURE	
TYPE OF CONSTRUCTION, V-B	
FIRE SUPPRESSION – (NS) NOT SPRINKLERED	
TABLE 601	0 (HOURS)
FIRE-RESISTANCE RATING REQUIREMENTS FOR BUILDING ELEMENTS (HOURS)	
TABLE 602	FIRE SEPARATION DISTANCE 10≤X<30
FIRE-RESISTANCE RATING REQUIREMENTS FOR EXTERIOR WALLS BASED ON FIRE SEPARATION DISTANCE	
0 (HOURS) – V-B	

CHAPTER 7 FIRE AND SMOKE PROTECTION FEATURES	
SECTION	DESCRIPTION
TABLE 706.4	FIRE WALL FIRE-RESISTANCE RATINGS NOT REQUIRED – PER TABLE 602, FIRE SEPARATION DISTANCE 10≤X<30
707	FIRE BARRIERS NO SEPARATION REQUIREMENT BETWEEN M AND S1 – PER TABLE 508.4

CHAPTER 9 FIRE PROTECTION SYSTEMS	
SECTION	DESCRIPTION
903.2.7	GROUP M AUTOMATIC SPRINKLER SYSTEM NOT REQUIRED – IN SINGLE STORY BUILDINGS UNDER 12,000 SF
903.2.9.1	REPAIR GARAGES, GROUP S1 AUTOMATIC SPRINKLER SYSTEM NOT REQUIRED – IN SINGLE STORY BUILDINGS UNDER 12,000 SF
903.2.9.2	BULK STORAGE OF TIRES, GROUP S1 AUTOMATIC SPRINKLER SYSTEM NOT REQUIRED – IN BULK STORAGE OF TIRES UNDER 20,000 CUBIC FEET – PROPOSED BULK-STORAGE VOLUME = 3,988 CF  VOLUME = 110 FEET OF RACKING X 2.5 FEET WIDE STORAGE X 14.5 FEET HIGH = 3,988 CF

FLORIDA FIRE PREVENTION CODE 7TH EDITION NFPA 1 FIRE CODE, 2020 EDITION			
CHAPTER 13 FIRE PROTECTION SYSTEMS	CODE REQUIREMENTS	PROPOSED	REMARKS
13.3 AUTOMATIC SPRINKLERS  * NOT PROVIDED	13.3.2.23.1 (2) NOT REQUIRED IN MERCANTILE OCCUPANCIES WITH LESS THAN 12,000 GSF IN THREE STORIES	NONE	MERCANTILE AREA: 966 SF
	13.3.2.27.1 NOT REQUIRED IN HIGH-PILED STORAGE AREAS OF LESS THAN 2,500 SF	NONE	HIGH-PILED AREA: 747 SF
	13.3.2.27.5 NOT REQUIRED IN BUILDINGS WHERE THE VOLUME FOR THE STORAGE OF TIRES IS LESS THAN 20,000 CF	NONE	BULK-STORAGE VOLUME = 3,988 CF VOLUME = 110 FEET OF RACKING X 2.5 FEET WIDE STORAGE X 14.5 FEET HIGH = 3,988 CF
	13.3.2.30 NOT REQUIRED IN INDUSTRIAL OCCUPANCIES WITH FIRE AREAS LESS THAN 12,000 GSF IN THREE STORIES	NONE	SPECIAL PURPOSE INDUSTRIAL = 6,694 SF MERCANTILE + STORAGE + SERVICE GARAGE AREAS

# R.A. JOHNSON LAND DEVELOPMENT

## 5571 LEE BOULEVARD LEHIGH ACRES, FL

**GENERAL NOTES**

1. THE GENERAL CONTRACTOR SHALL BE FAMILIAR WITH ALL THE WORK TO BE PERFORMED. THE GENERAL CONTRACTOR SHALL VERIFY ALL FIELD CONDITIONS PRIOR TO COMMENCEMENT OF THE WORK. ALL DISCREPANCIES TO BE REPORTED TO THE ARCHITECT.
2. ALL WORK TO BE PERFORMED SHALL COMPLY WITH ALL STATE AND LOCAL CODES, ORDINANCES AND REGULATIONS GOVERNING THE PROJECT.
3. CONTRACTOR TO VERIFY ALL WINDOW AND DOOR OPENING REQUIREMENTS WITH MANUFACTURER
4. ALL WINDOW AND DOOR FLASHING AND FINISHING TO BE IN ACCORDANCE WITH THE MANUFACTURER'S REQUIREMENTS AND APPLICABLE BUILDING CODES.
5. ALL PLUMBING FIXTURES, APPLIANCES AND CABINETS TO BE SELECTED BY OWNER.
6. CONTRACTOR TO COORDINATE ALL INSTALLATION OF PLUMBING FIXTURES, APPLIANCES AND CABINETS
7. CONTRACTOR TO PROVIDE BLOCKING AT ALL NEEDED LOCATIONS FOR FIXTURES, CABINETS, BATHROOM ACCESSORIES AND GRAB BARS.
8. ALL MATERIALS INSTALLED SHALL BE INSTALLED IN ACCORDANCE WITH THE MANUFACTURER'S SPECIFICATIONS AND APPLICABLE CODES, ORDINANCES AND REGULATIONS GOVERNING THE WORK.
9. THE CONTRACTOR IS SOLELY RESPONSIBLE FOR MEANS, METHODS, PROCEDURES AND SEQUENCES OF THE WORK.
10. CONTRACTOR TO PROVIDE HOSE BIBB AT THE LOCATIONS INDICATED ON THE PLAN – VERIFY WITH OWNER.
11. ALL ERRORS AND OMISSIONS IN THE DRAWINGS TO BE IMMEDIATELY REPORTED TO THE ARCHITECT BEFORE COMMENCEMENT OF THE WORK.

DRAWING INDEX	REVISION			
	1	2	3	4
CS COVER SHEET				
FC-1 FIRE CODE ANALYSIS				
A-1.1 FLOOR PLAN, DIMENSION PLAN				
A-1.2 WINDOW AND DOOR SCHEDULE				
A-1.3 ENLARGED BATHROOM PLAN				
A-2.1 ROOF PLAN				
A-3.1 FRONT AND RIGHT SIDE ELEVATIONS				
A-3.2 REAR AND LEFT SIDE ELEVATIONS				
A-4.1 BUILDING SECTION, WALL SECTION				
LS-001 LIFE SAFETY				
F-001 FOUNDATION				
TB-001 TIE BEAM, STRUCTURAL				
RF-001 ROOF FRAME				
M-001 MECHANICAL				
M-002 MECHANICAL				
E-001 ELECTRICAL				
E-002 ELECTRICAL				
P-001 PLUMBING				
P-002 PLUMBING				

**BUILDING AREA**

SALES FLOOR	966 SF.
SERVICE GARAGE	4,529 SF.
TIRE STORAGE	747 SF.
COVERED ENTRY	452 SF.
<b>TOTAL</b>	<b>6,694 SF.</b>

**PROJECT TEAM**

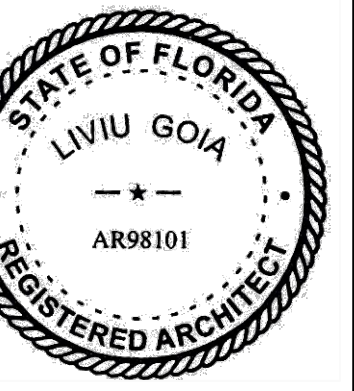
ARCHITECT:  
**GOIA ARCHITECTURE, LLC**  
 LIVIU GOIA, ARCHITECT  
 3606 ENTERPRISE AVE. STE. 302  
 NAPLES, FL 34104  
 PH. 239.431.6604  
 WWW.GOIARCHITECTURE.COM

STRUCTURAL ENGINEER:  
 CRAIG E. GUNDERSON  
 FLORIDA ENGINEERING, LLC  
 4456 TAMiami TRAIL UNIT B14  
 PORT CHARLOTTE, FL 33980  
 PH. 941.391.5980



ARCHITECTURE AND PLANNING  
 3606 ENTERPRISE AVE. STE. 302  
 NAPLES, FL 34104  
 PH. 239.431.6604  
 WWW.GOIARCHITECTURE.COM

R.A. JOHNSON  
 LAND DEVELOPMENT  
 5571 LEE BLVD.  
 LEHIGH ACRES, FL  
 COVER SHEET



LIVIU GOIA, ARCHITECT  
 FL AR98101

THESE DRAWINGS ARE  
 COPYRIGHTED PROPERTY OF  
 GOIA ARCHITECTURE, LLC.  
 NAPLES, FL. UNAUTHORIZED USE  
 IS STRICTLY PROHIBITED.

REVISION	
REVISION	
REVISION	
REVISION	
REVISION	
DRAWN	
CHKD	LG
DATE	4-14-22
PROJECT NO.	21-22

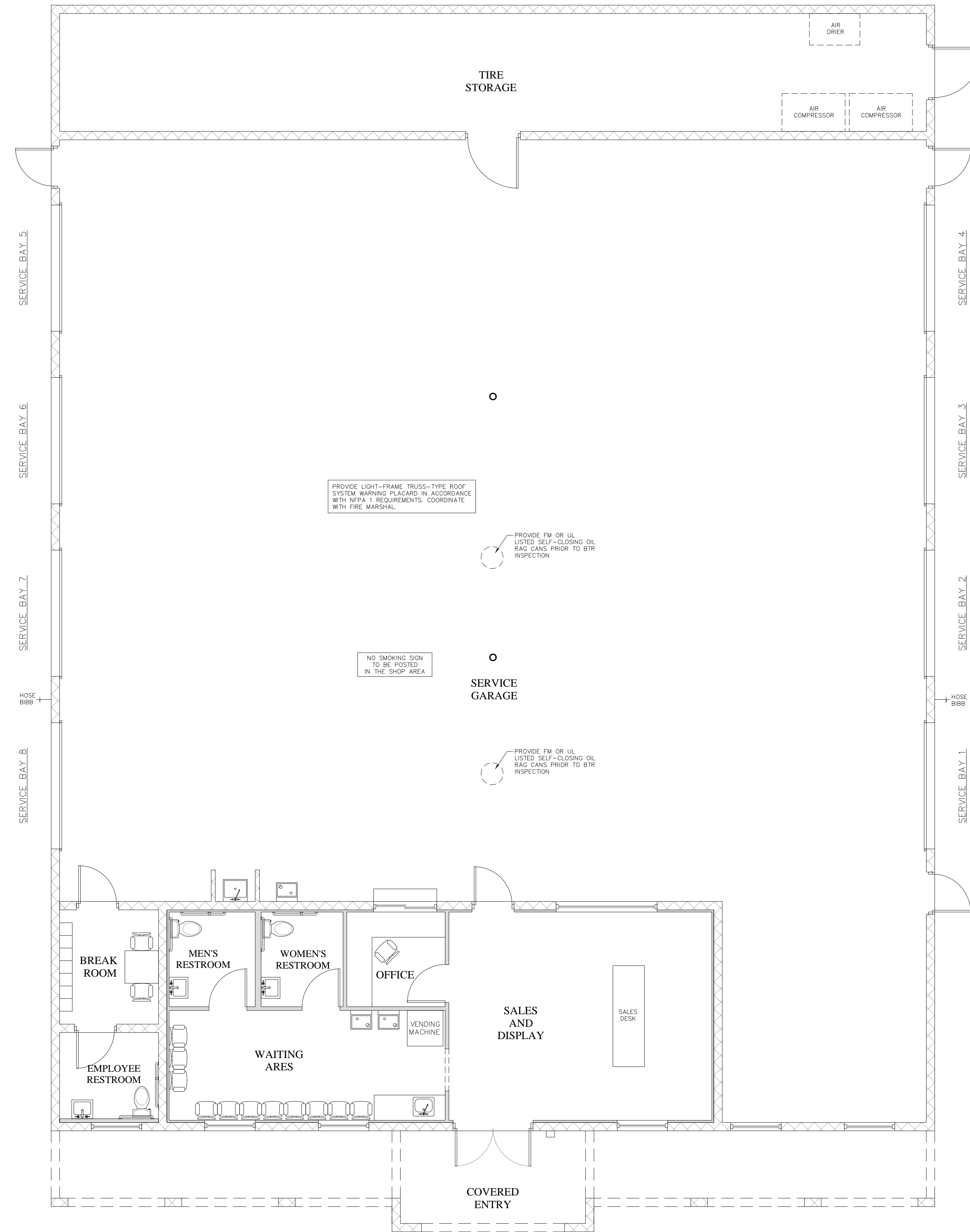
CS

FLORIDA FIRE PREVENTION CODE 7TH EDITION				
CHAPTER 6 CLASSIFICATION OF OCCUPANCY	DESCRIPTION	PROPOSED	REMARKS	
6.1.10	MERCANTILE	SALES AREA	966 SF SALES AREA AND CUSTOMER WAITING	NFPA 101-6.1.10.1
6.1.13.1	STORAGE	STORAGE AREA	747 SF BULK TIRE STORAGE	NFPA 101-6.1.13.1
30.2.2	SPECIAL PURPOSE INDUSTRIAL	SERVICE GARAGE AREA	4,529 SF SERVICE GARAGE	NFPA 101-30A.7.4.1
6.1.14.1	PREDOMINANT OCCUPANCY	SPECIAL PURPOSE INDUSTRIAL	6,694 SF SPECIAL PURPOSE INDUSTRIAL (1) INCIDENTAL MERCANTILE AND STORAGE AREAS SHALL BE CONSIDERED PART OF THE PREDOMINANT OCCUPANCY	NFPA 101-6.1.14.1
6.1.14.3	MIXED OCCUPANCIES	OCCUPANCIES WHICH INTERMINGLE	N/A	ALL AREAS CONSIDERED PART OF PREDOMINANT OCCUPANCY
6.1.14.4	SEPARATE OCCUPANCIES	OCCUPANCIES SEPARATED BY FIRE-RESISTIVE RATED ASSEMBLIES	N/A - NO FIRE SEPARATIONS	

CHAPTER 10 GENERAL SAFETY REQUIREMENTS	DESCRIPTION	PROPOSED	REMARKS
10.11.1	PREMISES IDENTIFICATION	BUILDING NUMBERS	6" HIGH NUMBERS SHALL BE APPLIED ABOVE ENTRANCE
10.18	STORAGE OF COMBUSTIBLE MATERIALS	2 FEET CLEAR ABOVE STORAGE IN NON-SPRINKLERED BUILDINGS	14.5 FEET TALL TIRE RACKS, 2.5 FEET CLEARANCE FROM TOP OF STORAGE TO BOTTOM OF ROOF DECK

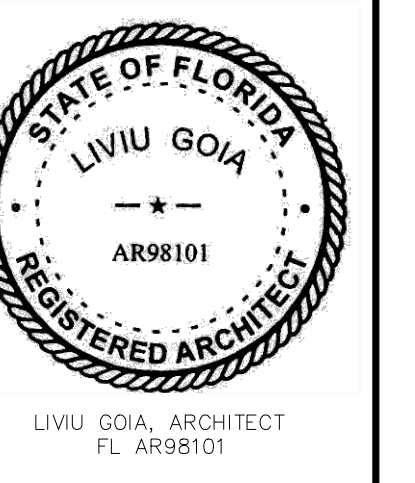
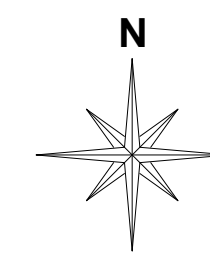
CHAPTER 13 FIRE PROTECTION SYSTEMS	DESCRIPTION	PROPOSED	REMARKS	
13.2	STANDPIPE SYSTEM	MORE THAN TWO STORIES ABOVE GRADE	N/A - ONE STORY BUILDING	
13.3 AUTOMATIC SPRINKLERS *NOT PROVIDED	13.3.2.23.1 (2)	NOT REQUIRED IN MERCANTILE OCCUPANCIES WITH LESS THAN 12,000 GSF IN THREE STORIES	NONE - MERCANTILE AREA = 966 SF	
	13.3.2.27.1	NOT REQUIRED IN HIGH-PILED STORAGE AREAS OF LESS THAN 2,500 SF	NONE - HIGH-PILE AREA (TIRE STORAGE) = 747 SF	
	13.3.2.27.5	NOT REQUIRED IN BUILDINGS WHERE THE VOLUME FOR THE STORAGE OF TIRES IS LESS THAN 20,000 CF.	NONE - BULK-STORAGE VOLUME = 3,988 CF	VOLUME = 110 FEET OF RACKING X 2.5 FEET WIDE STORAGE X 14.5 FEET HIGH = 3,988 CF
	13.3.2.30	NOT REQUIRED IN INDUSTRIAL OCCUPANCIES WITH FIRE AREAS LESS THAN 12,000 GSF IN THREE STORIES	NONE - SPECIAL PURPOSE INDUSTRIAL = 6,694 SF	MERCANTILE + STORAGE + SERVICE GARAGE AREAS

CHAPTER 30 MOTOR FUEL DISPENSING FACILITIES AND REPAIR GARAGES	DESCRIPTION	PROPOSED	REMARKS	
30.2.1	APPLICATION	MAJOR REPAIR AND MAINTENANCE AND/OR SALES AND SERVICING FACILITIES	TIRE SALES AND SERVICING FACILITY	
30.2.2	OCCUPANCY CLASS	SPECIAL PURPOSE INDUSTRIAL	SPECIAL PURPOSE INDUSTRIAL	NFPA 101-30A:7.4.1
30.2.3	SPECIAL FUEL VEHICLES	PER NFPA 52 AND/OR NFPA 58	N/A	NO SPECIAL FUEL VEHICLES TO BE SERVICED
30.2.5	FLOOR CONSTRUCTION	NON-ABSORBANT AND NON-COMBUSTIBLE	NON-ABSORBANT AND NON-COMBUSTIBLE	CONCRETE SLAB ON GRADE
30.2.7	FIXED FIRE PROTECTION	(2) NOT REQUIRED UNDER 12,000 SF	NOT PROVIDED	SERVICE GARAGE = 4,529 SF



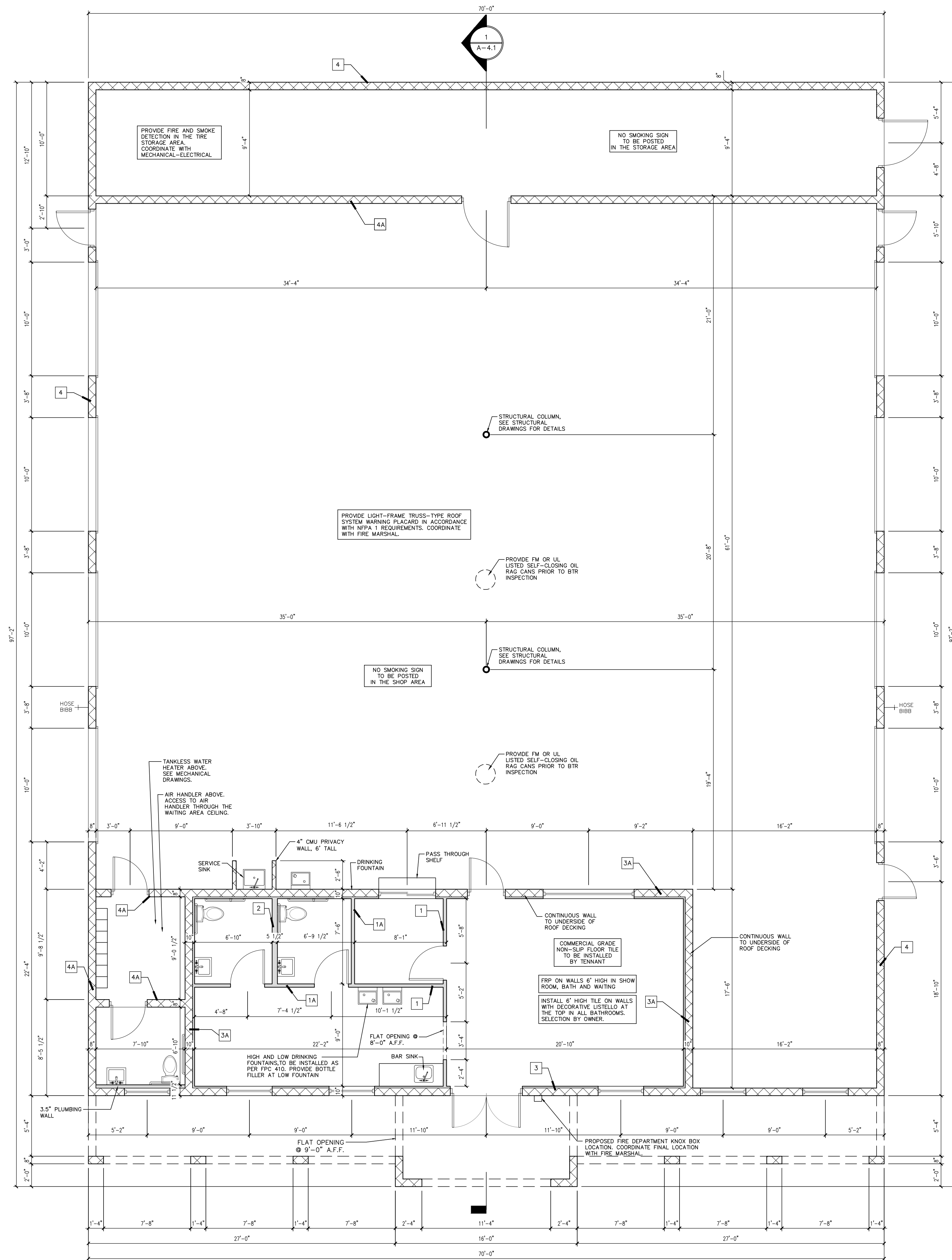
BUILDING AREA	
SALES FLOOR	966 SF.
SERVICE GARAGE	4,529 SF.
TIRE STORAGE	747 SF.
COVERED ENTRY	452 SF.
<b>TOTAL</b>	<b>6,694 SF.</b>

1 FLOOR PLAN  
SCALE: 3/16" = 1'-0"

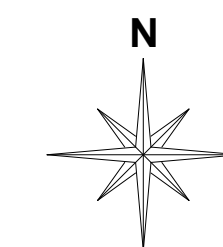


THESE DRAWINGS ARE COPYRIGHTED PROPERTY OF GOIA ARCHITECTURE, LLC, NAPLES, FL. UNAUTHORIZED USE IS STRICTLY PROHIBITED.

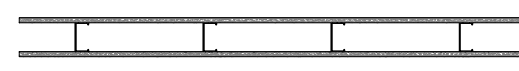
REVISION	
REVISION	
REVISION	
REVISION	
REVISION	
DRAWN	
CHKD	LG
DATE	4-14-22
PROJECT NO.	21-18

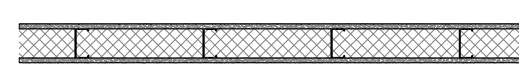



1 FLOOR PLAN  
SCALE: 3/16" = 1'-0"

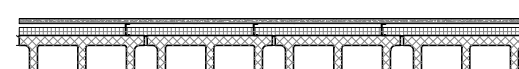


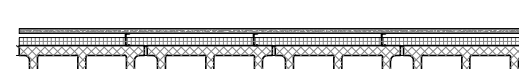
WALL TYPES


- 1  


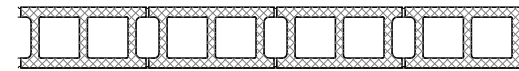
INTERIOR PARTITION  
3 5/8" METAL STUD FRAMING @ 16" O.C. - 6" ABOVE CEILING  
5/8" GYPSUM BOARD ON EACH SIDE - 6" ABOVE CEILING
- 1A  


INTERIOR PARTITION - SOUND INSULATION  
3 5/8" METAL STUD FRAMING @ 16" O.C. - 6" ABOVE CEILING  
SOUND INSULATION - 6" ABOVE CEILING  
5/8" GYPSUM BOARD ON EACH SIDE - 6" ABOVE CEILING
- 2  


INTERIOR PARTITION - PLUMBING CHASE  
5 1/2" METAL STUD FRAMING @ 16" O.C. - 6" ABOVE CEILING  
5/8" MOISTURE RESISTANT GYPSUM BOARD ON EACH SIDE - 6" ABOVE CEILING
- 3  


CMU AT CONDITIONED SPACES  
TEXTURED STUCCO FINISH - EXTERIOR  
8" CMU - SEE STRUCTURAL DRAWINGS  
1 1/2" METAL FURRING @ 16" O.C. - 6" ABOVE CEILING  
1" RIGID INSULATION 12" ABOVE CEILING  
5/8" GYPSUM BOARD - 6" ABOVE CEILING
- 3A  


CMU AT CONDITIONED SPACES  
PAINTED CMU FINISH - INTERIOR  
8" CMU - SEE STRUCTURAL DRAWINGS  
1 1/2" METAL FURRING @ 16" O.C. - 6" ABOVE CEILING  
1" RIGID INSULATION 12" ABOVE CEILING  
5/8" GYPSUM BOARD - 6" ABOVE CEILING
- 4  


CMU AT UNCONDITIONED SPACES  
TEXTURED STUCCO FINISH - EXTERIOR  
8" CMU - SEE STRUCTURAL DRAWINGS  
PAINTED INTERIOR
- 4A  


CMU AT UNCONDITIONED SPACES  
PAINTED CMU FINISH  
8" CMU - SEE STRUCTURAL DRAWINGS  
INTERIOR WALLS

NOTES

1. CONTRACTOR TO VERIFY ALL DOOR OPENING REQUIREMENTS WITH MANUFACTURER.
2. ALL MATERIALS INSTALLED SHALL BE INSTALLED IN ACCORDANCE WITH THE MANUFACTURER'S SPECIFICATIONS AND APPLICABLE CODES, ORDINANCES AND REGULATIONS GOVERNING THE WORK.
3. THE CONTRACTOR IS SOLELY RESPONSIBLE FOR MEANS, METHODS, PROCEDURES AND SEQUENCES OF THE WORK.
4. ALL CONSTRUCTION TO COMPLY WITH APPLICABLE CODES, STATE AND LOCAL CODES.
5. ALL EXIT SIGNS TO BE INSTALLED IN ACCORDANCE WITH SECTION 1013 OF FLORIDA BUILDING CODE.
6. 8" CMU WALL TYPICALLY, SEE STRUCTURAL DRAWINGS.

NOTE

ELECTRICAL PANEL AND METER TO BE COORDINATED WITH TRANSFORMER LOCATION AND WITH OWNER. PANEL LOCATION AS SHOWN PER ELECTRICAL PLAN NOT TO BE FINAL UNLESS APPROVED BY OWNER.

BUILDING AREA

SALES FLOOR	966 SF.
SERVICE GARAGE	4,529 SF.
TIRE STORAGE	747 SF.
COVERED ENTRY	452 SF.
<b>TOTAL</b>	<b>6,694 SF.</b>



LIVIU GOIA, ARCHITECT  
FL AR98101

THESE DRAWINGS ARE COPYRIGHTED PROPERTY OF GOIA ARCHITECTURE LLC, NAPLES, FL. UNAUTHORIZED USE IS STRICTLY PROHIBITED.

REVISION

REVISION

REVISION

REVISION

REVISION

DRAWN

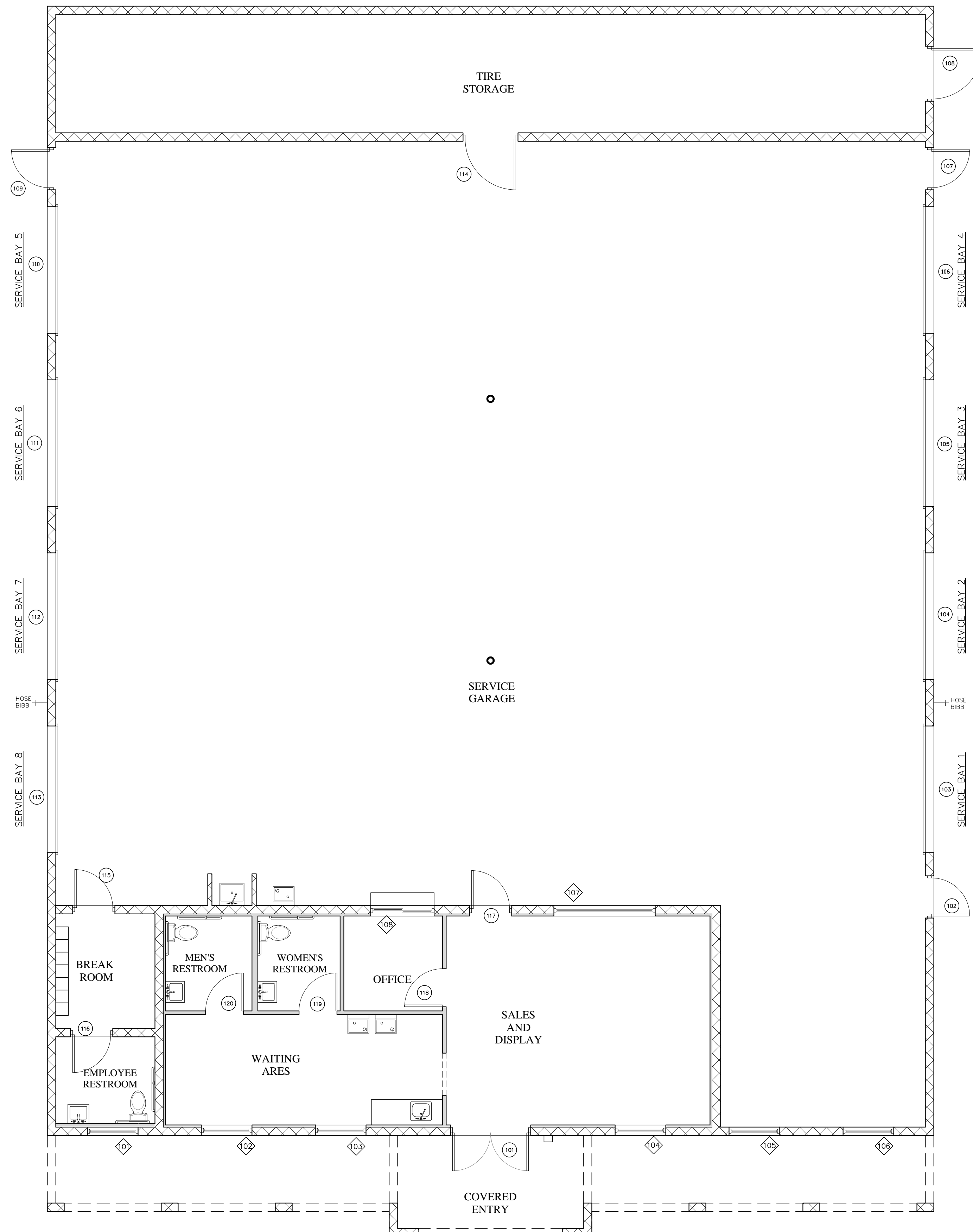
CHKD LG

DATE 4-14-22

PROJECT NO. 21-22

DRAWING NO.

**A-1.1**



1 NOTE PLAN  
SCALE: 3/16" = 1'-0"

### DOOR SCHEDULE

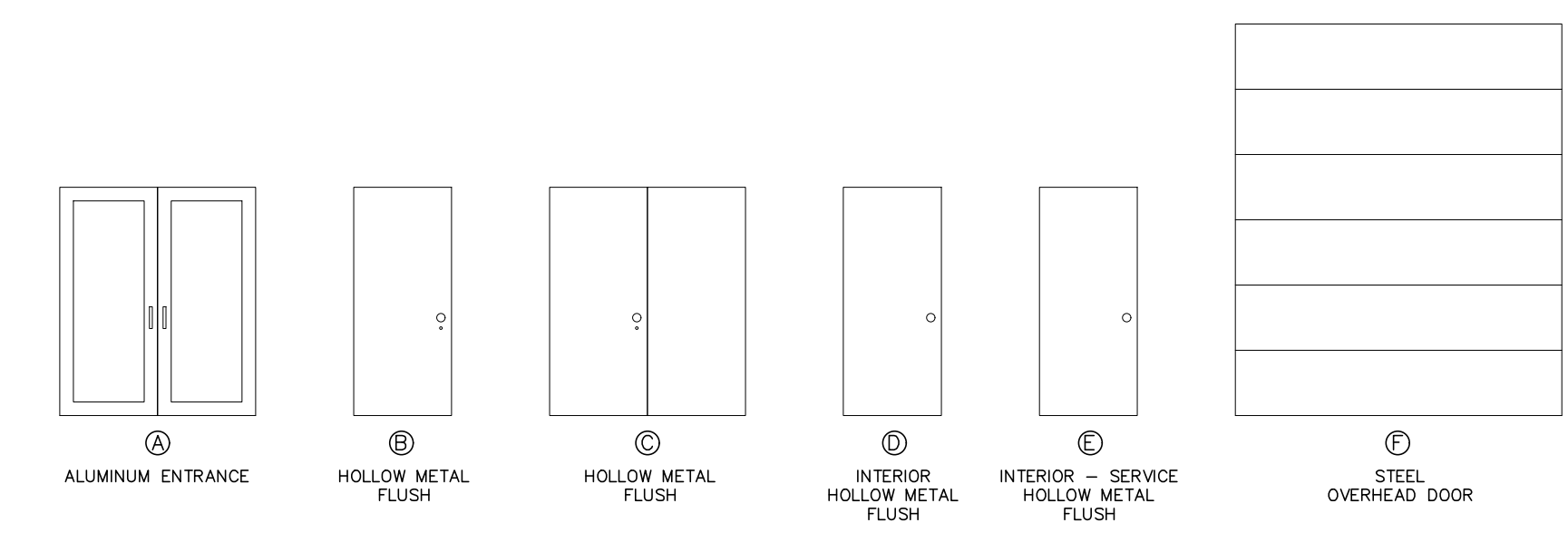
MARK	STYLE	SIZE WD HGT	MANUFACTURER	MODEL	MATERIAL	TYPE	HARDWARE	REMARKS
101	A	6'-0" 7'-0"	KAWNEER	350 IR	ALUM.	IMPACT	PANIC EXIT DEVICE W/ CLOSER	FLORIDA PRODUCT APPROVAL # FL 0786-R9
102	B	3'-0" 7'-0"	QUALITY ENGINEERED PRODUCTS	16 GA	METAL	IMPACT	PANIC EXIT DEVICE W/ CLOSER	MIAMI DADE NOA# 19-0507.03
103	F	10'-0" 12'-0"	OVERHEAD DOORS	610	METAL	IMPACT		FLORIDA PRODUCT APPROVAL # FL 00742.8
104	F	10'-0" 12'-0"	OVERHEAD DOORS	610	METAL	IMPACT		FLORIDA PRODUCT APPROVAL # FL 00742.8
105	F	10'-0" 12'-0"	OVERHEAD DOORS	610	METAL	IMPACT		FLORIDA PRODUCT APPROVAL # FL 00742.8
106	F	10'-0" 12'-0"	OVERHEAD DOORS	610	METAL	IMPACT		FLORIDA PRODUCT APPROVAL # FL 00742.8
107	B	3'-0" 7'-0"	QUALITY ENGINEERED PRODUCTS	16 GA	METAL	IMPACT	PANIC EXIT DEVICE W/ CLOSER	MIAMI DADE NOA# 19-0507.03
108	B	4'-0" 7'-0"	QUALITY ENGINEERED PRODUCTS	16 GA	METAL	IMPACT	PANIC EXIT DEVICE W/ CLOSER	MIAMI DADE NOA# 19-0507.03
109	B	3'-0" 7'-0"	QUALITY ENGINEERED PRODUCTS	16 GA	METAL	IMPACT	PANIC EXIT DEVICE W/ CLOSER	MIAMI DADE NOA# 19-0507.03
110	F	10'-0" 12'-0"	OVERHEAD DOORS	610	METAL	IMPACT		FLORIDA PRODUCT APPROVAL # FL 00742.8
111	F	10'-0" 12'-0"	OVERHEAD DOORS	610	METAL	IMPACT		FLORIDA PRODUCT APPROVAL # FL 00742.8
112	F	10'-0" 12'-0"	OVERHEAD DOORS	610	METAL	IMPACT		FLORIDA PRODUCT APPROVAL # FL 00742.8
113	F	10'-0" 12'-0"	OVERHEAD DOORS	610	METAL	IMPACT		FLORIDA PRODUCT APPROVAL # FL 00742.8
114	E	4'-0" 7'-0"			METAL		LEVER-TYPE HANDLE	3/4 HOUR RATED DOOR
115	E	3'-0" 7'-0"			METAL		LEVER-TYPE HANDLE	SELECTION BY OWNER
116	E	3'-0" 7'-0"			METAL		LEVER-TYPE HANDLE	SELECTION BY OWNER
117	E	3'-0" 7'-0"			METAL		LEVER-TYPE HANDLE	1 1/2 HOUR RATED DOOR
118	D	3'-0" 7'-0"			METAL		LEVER-TYPE HANDLE	SELECTION BY OWNER
119	D	3'-0" 7'-0"			METAL		LEVER-TYPE HANDLE	SELECTION BY OWNER
120	D	3'-0" 7'-0"			METAL		LEVER-TYPE HANDLE	SELECTION BY OWNER

- GENERAL DOOR AND HARDWARE NOTES
1. PROVIDE PANIC EXIT DEVICES OR LEVER-TYPE HANDLE AT DOORS AS INDICATED ON THE DOOR SCHEDULE.
  2. ALL DOOR HARDWARE TO BE INSTALLED 34 INCHES MINIMUM AND 48 INCHES MAXIMUM ABOVE THE FINISH FLOOR OR GROUND.
  3. CONTRACTOR TO VERIFY ALL FIELD OPENINGS BEFORE PURCHASE AND INSTALLATION.
  4. ALL DOOR HARDWARE AND THRESHOLDS TO COMPLY WITH ALL LOCAL ACCESSIBILITY CODES AND REGULATIONS.

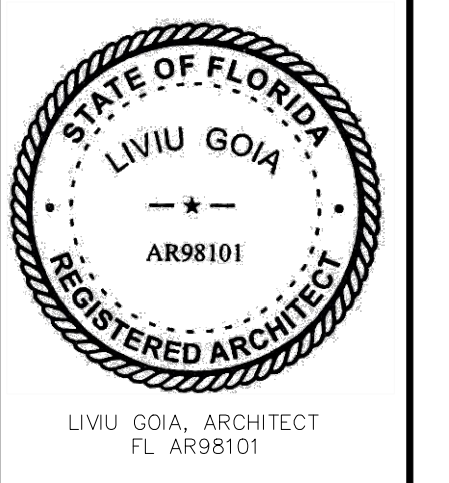
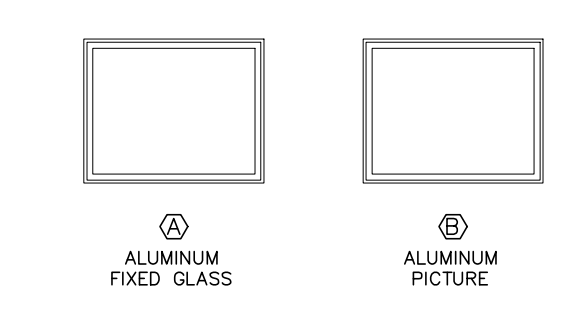
### WINDOW SCHEDULE

MARK	STYLE	SIZE WIDTH HEIGHT	MANUFACTURER	MODEL	MATERIAL	TYPE	INSULATED	REMARKS
101	A	4'-0" 4'-0"	PGT	PW720	ALUM.	IMPACT	YES	MIAMI DADE NOA# 17-0614.11
102	A	4'-0" 4'-0"	PGT	PW720	ALUM.	IMPACT	YES	MIAMI DADE NOA# 17-0614.11
103	A	4'-0" 4'-0"	PGT	PW720	ALUM.	IMPACT	YES	MIAMI DADE NOA# 17-0614.11
104	A	4'-0" 4'-0"	PGT	PW720	ALUM.	IMPACT	YES	MIAMI DADE NOA# 17-0614.11
105	A	4'-0" 4'-0"	PGT	PW720	ALUM.	IMPACT	YES	MIAMI DADE NOA# 17-0614.11
106	A	4'-0" 4'-0"	PGT	PW720	ALUM.	IMPACT	YES	MIAMI DADE NOA# 17-0614.11
107	B	8'-0" 4'-0"			ALUM.	TEMPERED		SELECTION BY OWNER
108	GLIDER	5'-0" 4'-0"			ALUM.	TEMPERED		SELECTION BY OWNER

### DOOR TYPES

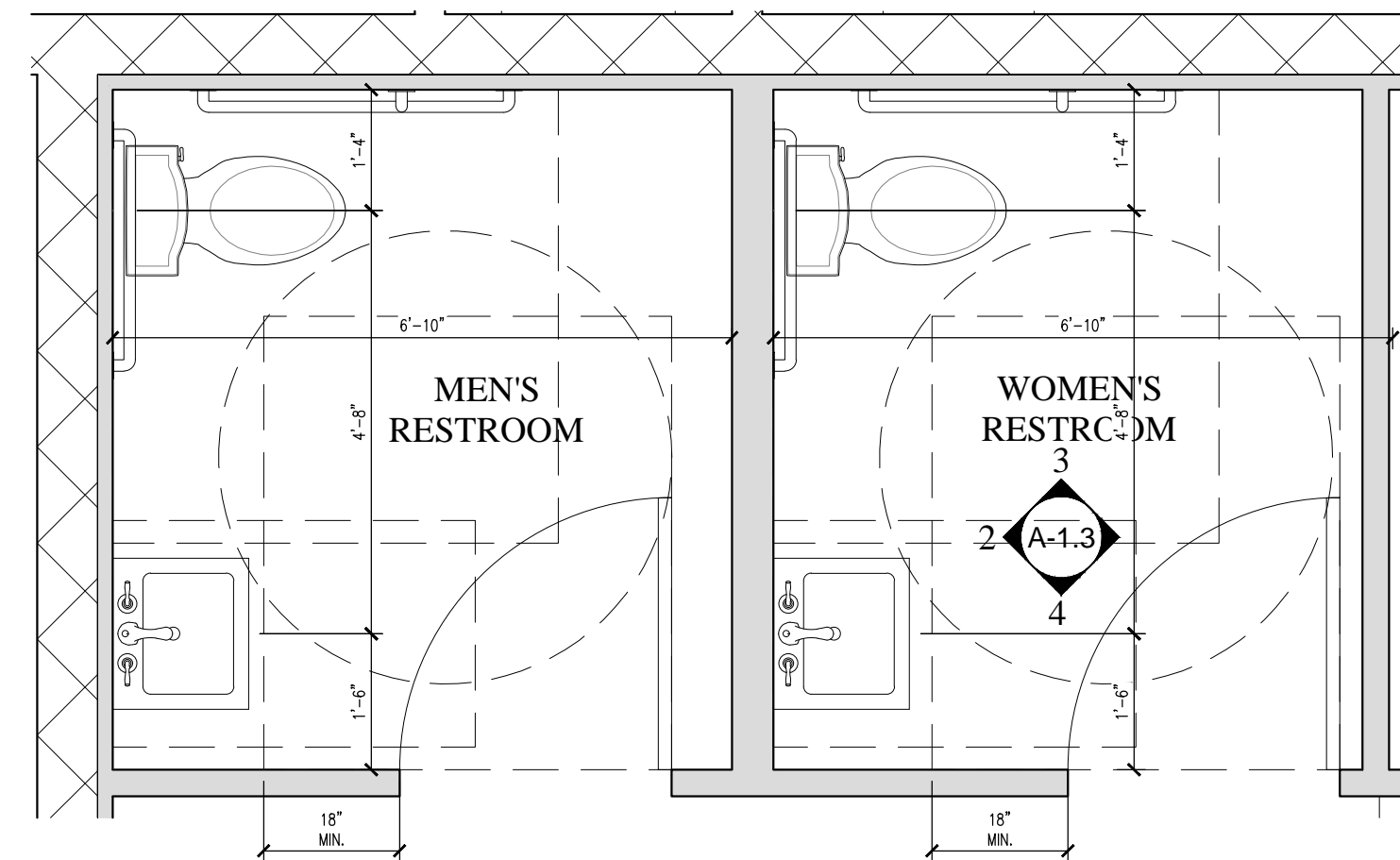


### WINDOW TYPES

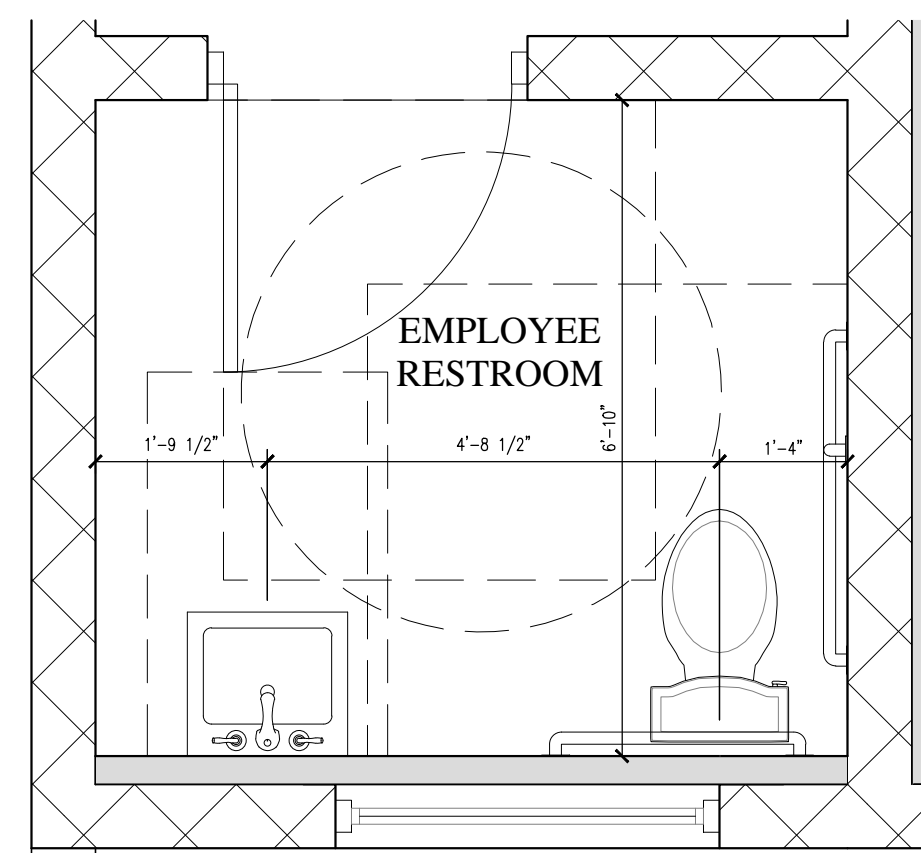


THESE DRAWINGS ARE COPYRIGHTED PROPERTY OF GOIA ARCHITECTURE, LLC, NAPLES, FL. UNAUTHORIZED USE IS STRICTLY PROHIBITED.

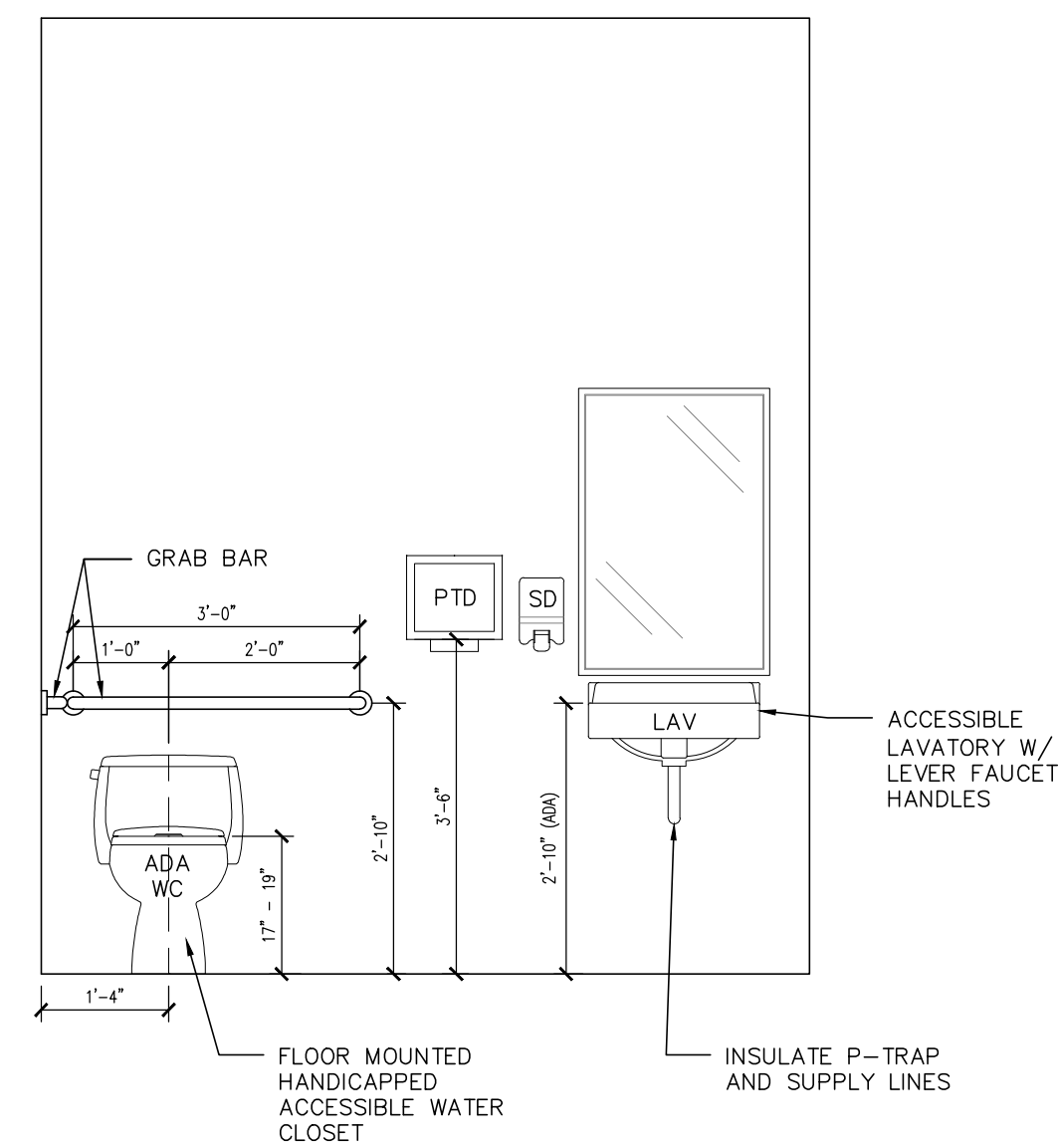
REVISION	
REVISION	
REVISION	
REVISION	
REVISION	
DRAWN	
CHKD	LG
DATE	4-14-22
PROJECT NO.	21-22
DRAWING NO.	



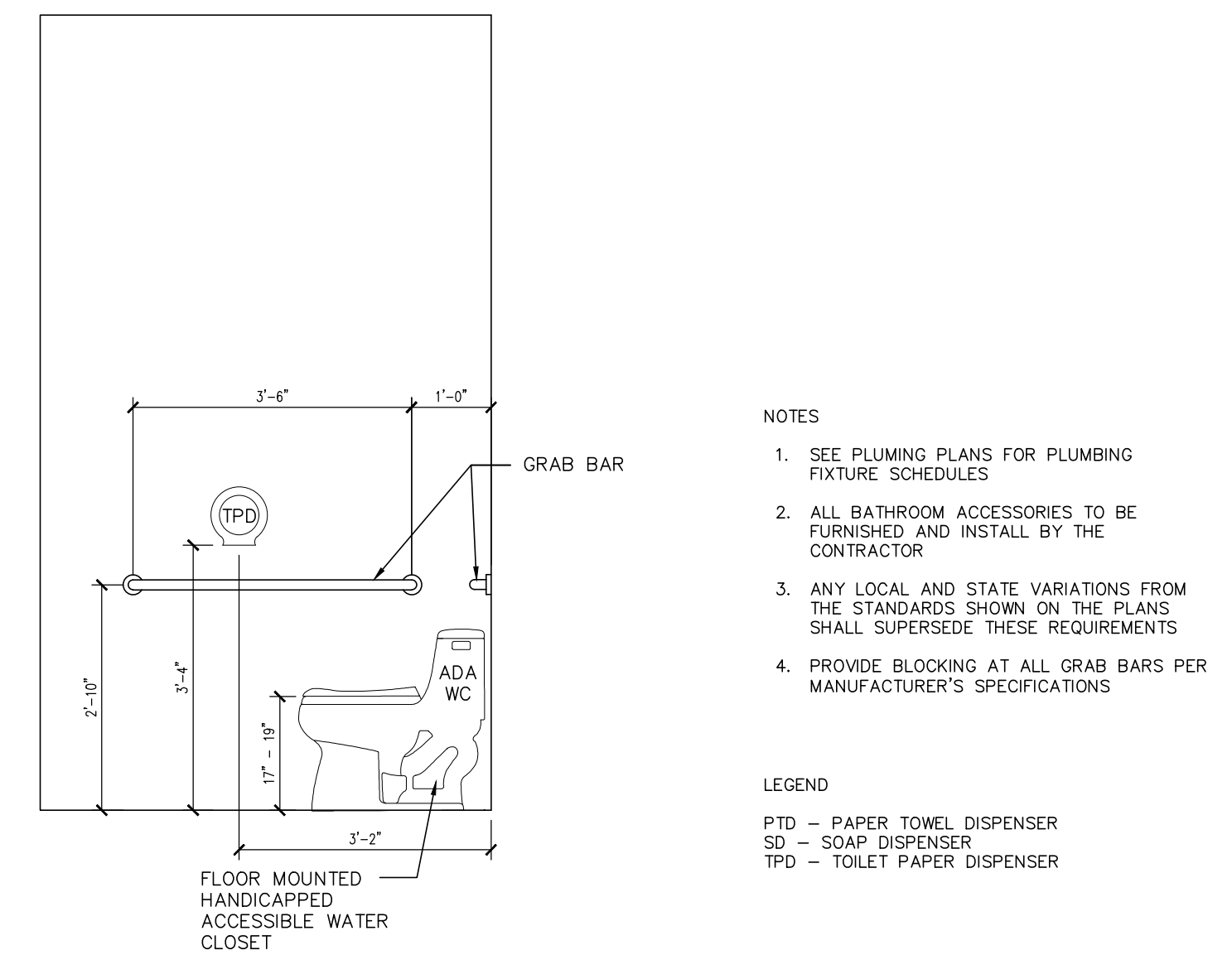
**1 ENLARGED FLOOR PLAN**  
SCALE: 1/2" = 1'-0"



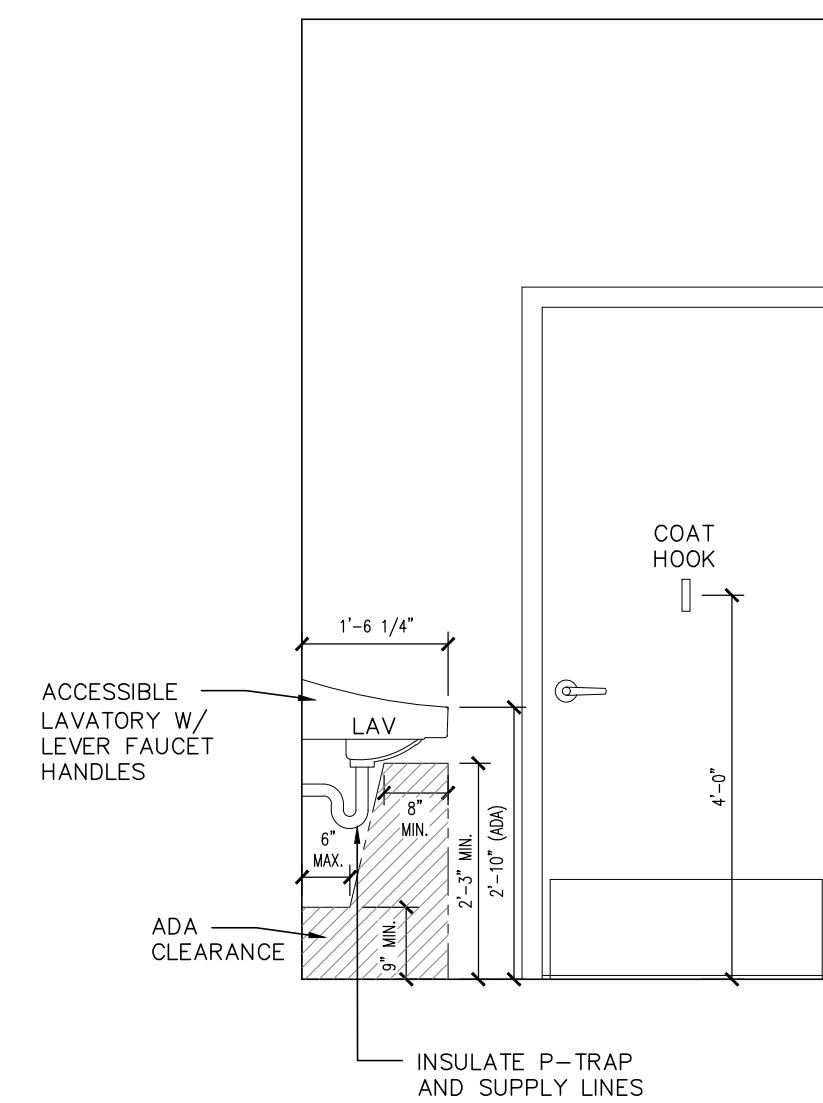
**1 ENLARGED FLOOR PLAN**  
SCALE: 1/2" = 1'-0"



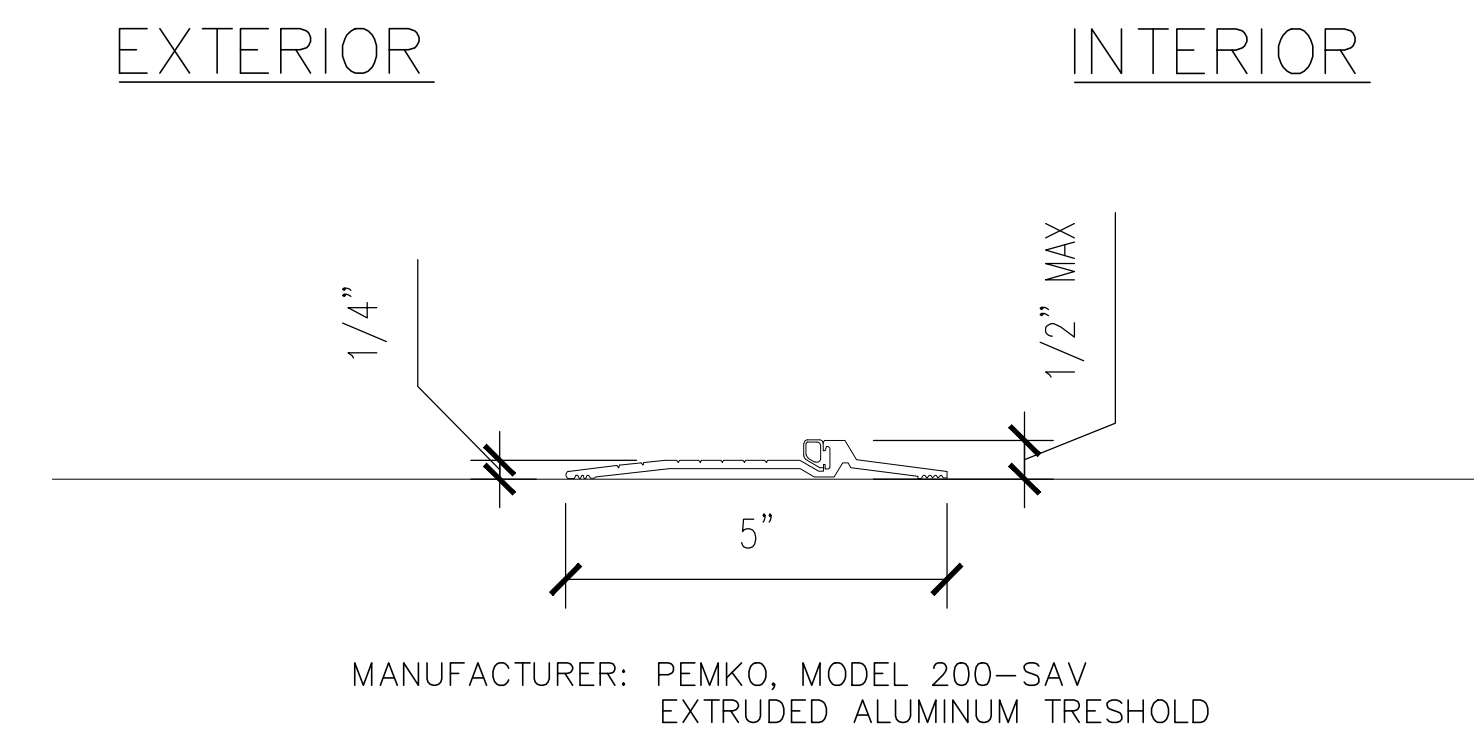
**2 ADA COMPLIANT RESTROOM**  
SCALE: 1/2" = 1'-0"



**3 ADA COMPLIANT RESTROOM**  
SCALE: 1/2" = 1'-0"



**4 ADA COMPLIANT RESTROOM**  
SCALE: 1/2" = 1'-0"

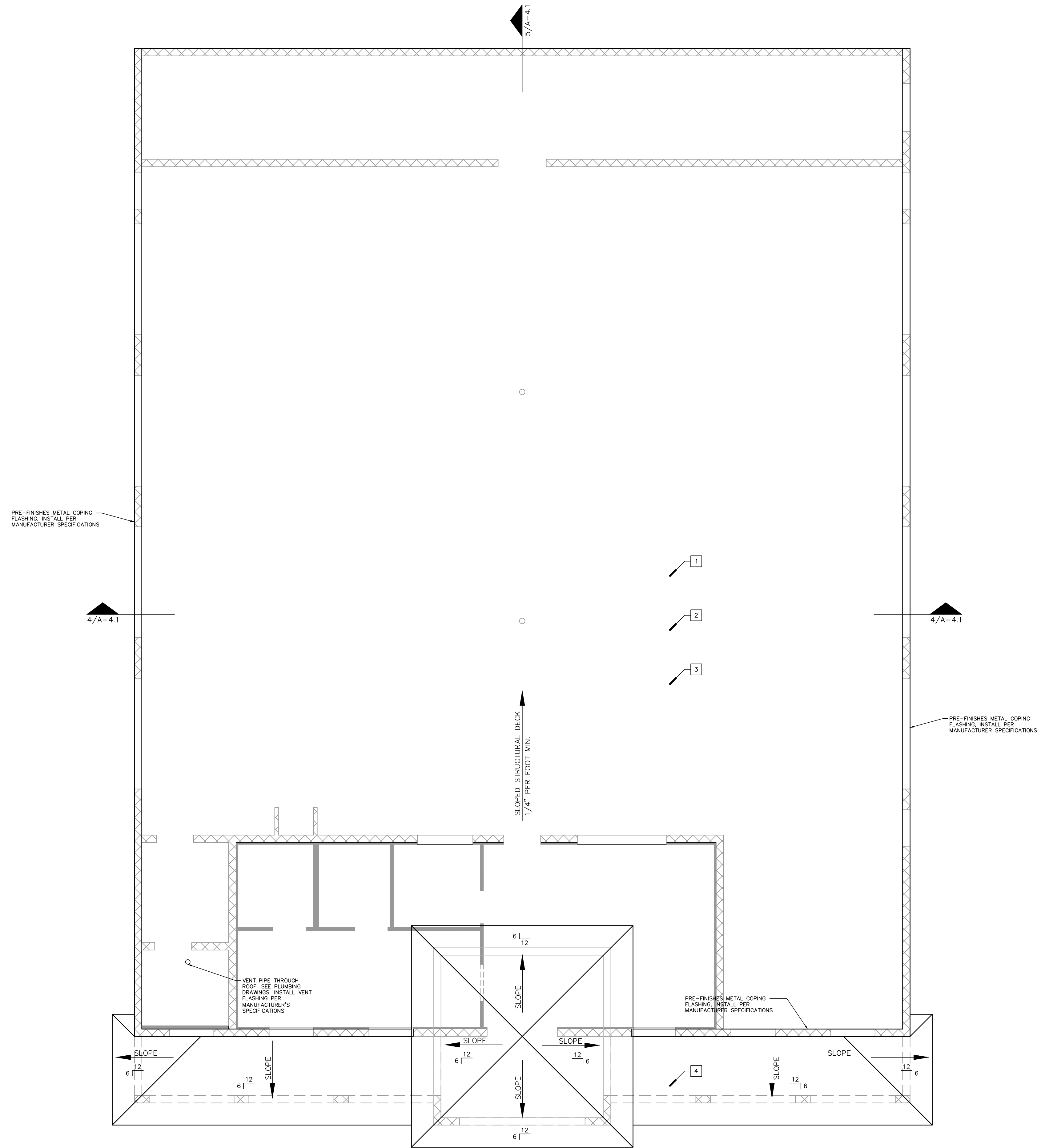


**5 ACCESSIBLE TRESHOLD DETAIL**  
NOT TO SCALE

- NOTES
- SEE PLUMBING PLANS FOR PLUMBING FIXTURE SCHEDULES
  - ALL BATHROOM ACCESSORIES TO BE FURNISHED AND INSTALL BY THE CONTRACTOR
  - ANY LOCAL AND STATE VARIATIONS FROM THE STANDARDS SHOWN ON THE PLANS SHALL SUPERSEDE THESE REQUIREMENTS
  - PROVIDE BLOCKING AT ALL GRAB BARS PER MANUFACTURER'S SPECIFICATIONS

- LEGEND
- PTD - PAPER TOWEL DISPENSER
  - SD - SOAP DISPENSER
  - TPD - TOILET PAPER DISPENSER

REVISION
REVISION
REVISION
REVISION
REVISION
DRAWN
CHKD LG
DATE 4-14-22
PROJECT NO. 21-22
DRAWING NO.



**ROOF DRAINAGE CALCULATIONS**

2017 – FLORIDA BUILDING CODE – PLUMBING, SIXTH EDITION  
CHAPTER 11 STORM DRAINAGE

HORIZONTAL GUTTER WITH VERTICAL LEADERS DISCHARGE

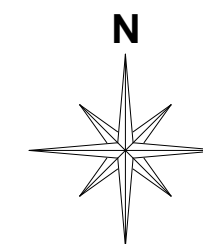
HORIZONTAL ROOF SURFACE:	6,077 SF
100-YEAR, 1-HOUR RAINFALL:	4.5" PER HOUR
REQUIRED GPM BASED ON ROOF AREA:	0.0104 GPM/1 SF X 4.5" X 6,077 SF = 285 GPM REQUIRED
HORIZONTAL GUTTER SIZE:	4 1/2" X 6", SLOPE 1/4" PER FOOT
CAPACITY:	348 GPM
VERTICAL LEADER SIZE:	3 1/2" X 4"
CAPACITY:	192 GPM X 5 LEADERS PROVIDED = 960 GPM PROVIDED

**ROOF NOTES**

1. ROOF DECKING: MIN. 22 GA., TYPE B, GRADE 33 STEEL. – INSTALL PER MANUFACTURER'S SPECIFICATIONS.
2. ROOF INSULATION: FIRESTONE, 3" ISO 95+ POLY ISO INSULATION, FIRESTONE HD FASTENERS – INSTALL PER MANUFACTURER'S SPECIFICATIONS
3. ROOFING MEMBRANE: FIRESTONE – ULTRAPLY TPO 60 MIL MEMBRANE. – INSTALL PER MANUFACTURER'S SPECIFICATIONS.
4. FLAT TILE CONCRETE ROOF OVER ICE AND WATER SHIELD AND 5/8" ZIP SYSTEM ROOF SHEATHING.

\* ALL PRODUCTS TO BE INSTALLED PER MANUFACTURER'S SPECIFICATIONS

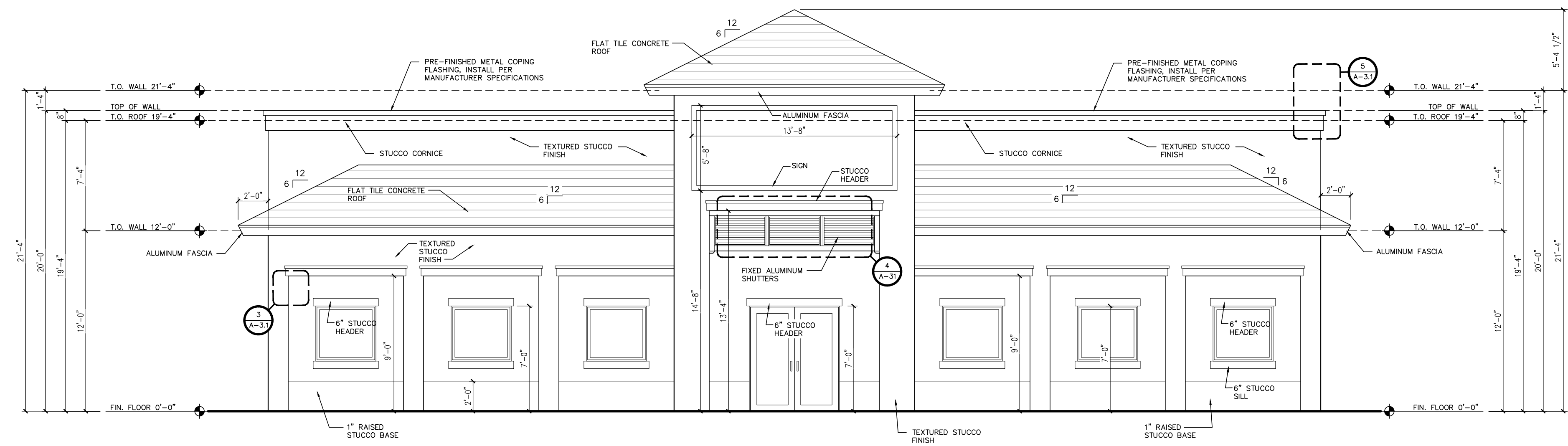
**1 ROOF PLAN**  
SCALE: 3/16" = 1'-0"



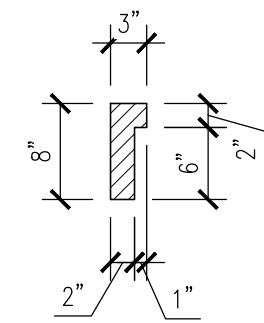
LIVIU GOIA, ARCHITECT  
FL AR98101

THESE DRAWINGS ARE  
COPYRIGHTED PROPERTY OF  
GOIA ARCHITECTURE LLC,  
NAPLES, FL. UNAUTHORIZED USE  
IS STRICTLY PROHIBITED.

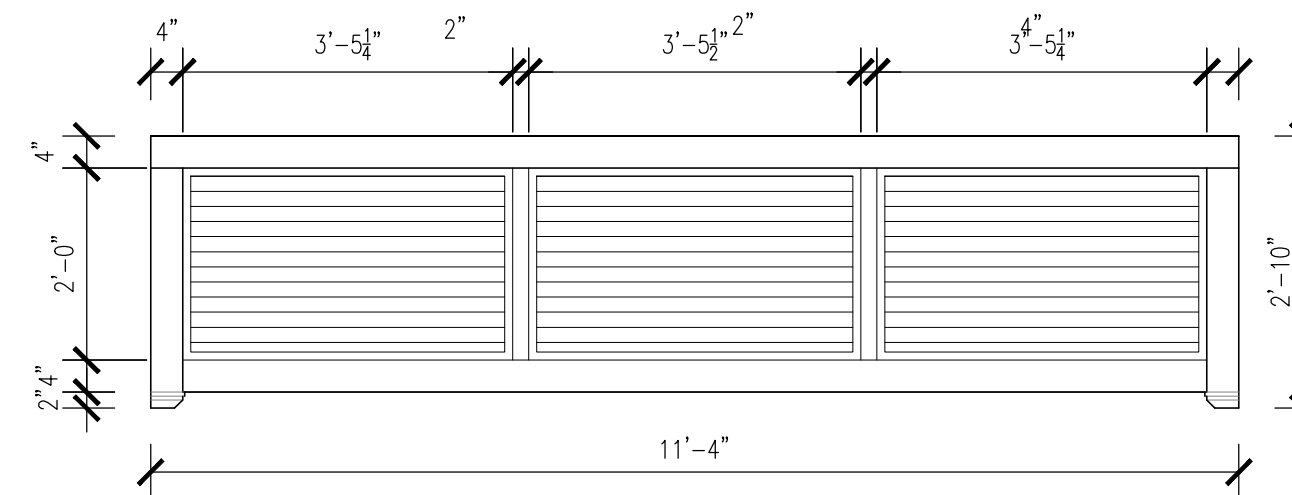
REVISION	
REVISION	
REVISION	
REVISION	
REVISION	
DRAWN	
CHKD	LG
DATE	4-14-22
PROJECT NO.	21-22
DRAWING NO.	



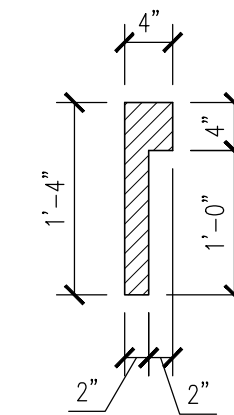
**1 FRONT ELEVATION**  
SCALE: 3/16" = 1'-0"



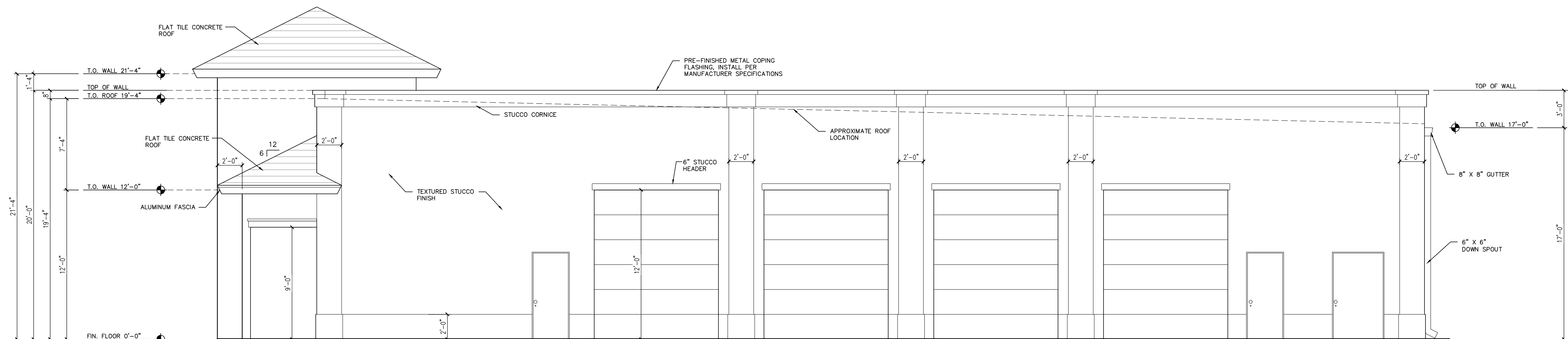
**3 HEADER DETAIL**  
SCALE: 3/4" = 1'-0"



**4 SHUTTER DETAILS**  
SCALE: 1/2" = 1'-0"



**5 CORNICE DETAILS**  
SCALE: 3/4" = 1'-0"



**2 RIGHT SIDE ELEVATION**  
SCALE: 3/16" = 1'-0"

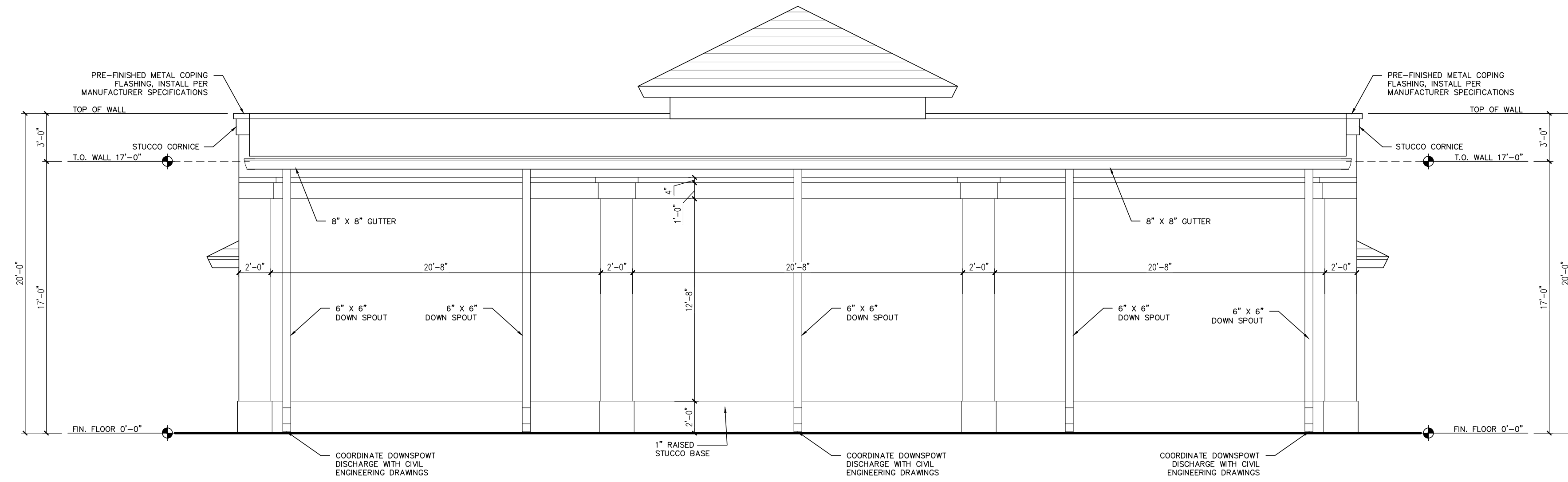
REVISION	
REVISION	
REVISION	
REVISION	
REVISION	
DRAWN	
CHKD	LG
DATE	4-14-22
PROJECT NO.	21-22
DRAWING NO.	



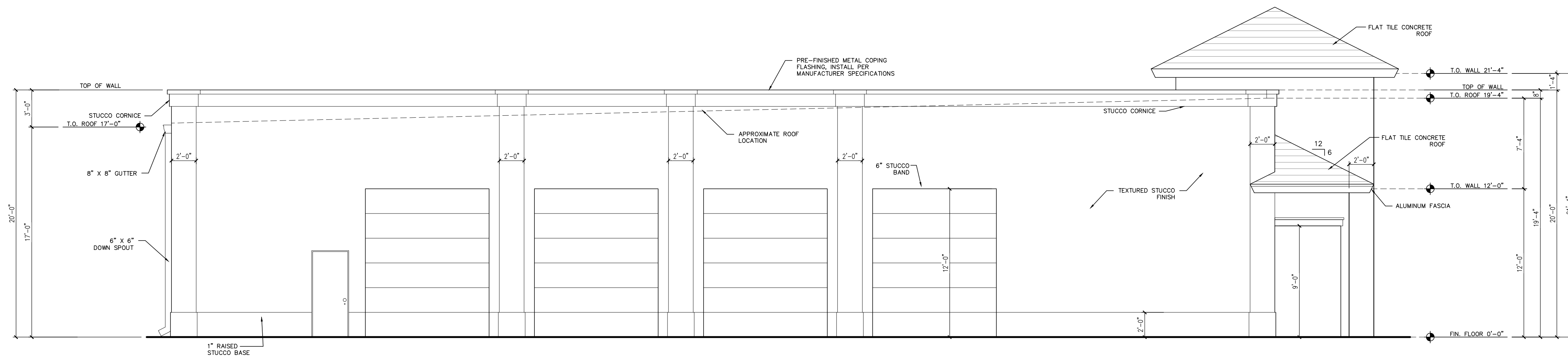
LIVIU GOIA, ARCHITECT  
FL AR98101

THESE DRAWINGS ARE  
COPYRIGHTED PROPERTY OF  
GOIA ARCHITECTURE LLC,  
NAPLES, FL. UNAUTHORIZED USE  
IS STRICTLY PROHIBITED.

REVISION	
REVISION	
REVISION	
REVISION	
REVISION	
DRAWN	
CHKD	LG
DATE	4-14-22
PROJECT NO.	21-22
DRAWING NO.	

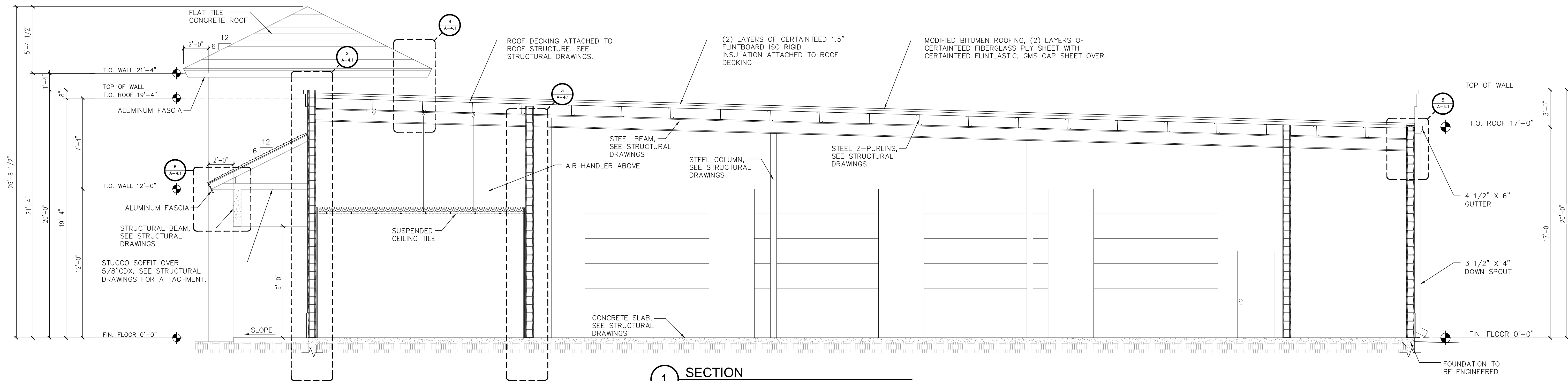


**1 REAR ELEVATION**  
SCALE: 3/16" = 1'-0"

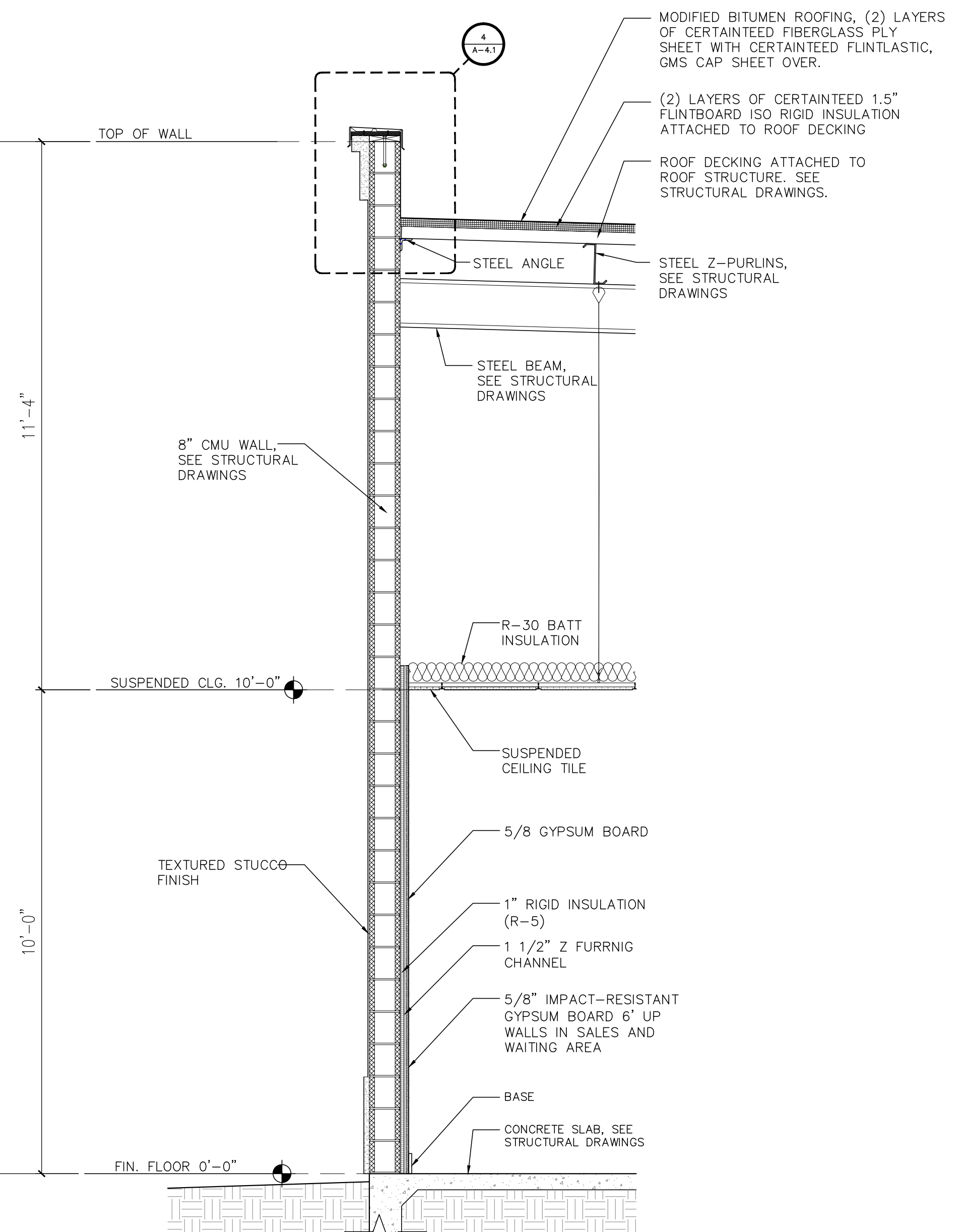


**2 LEFT SIDE ELEVATION**  
SCALE: 3/16" = 1'-0"

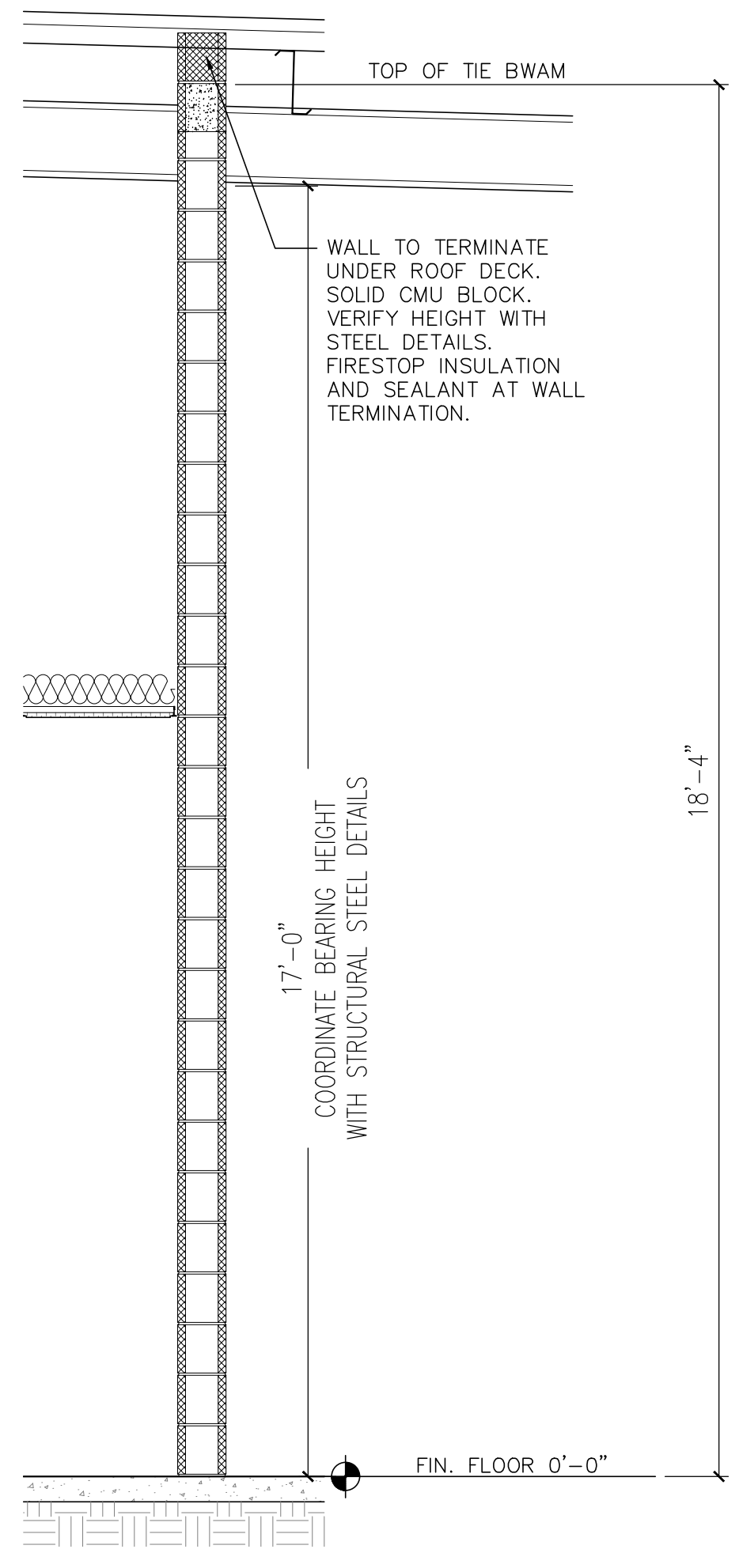




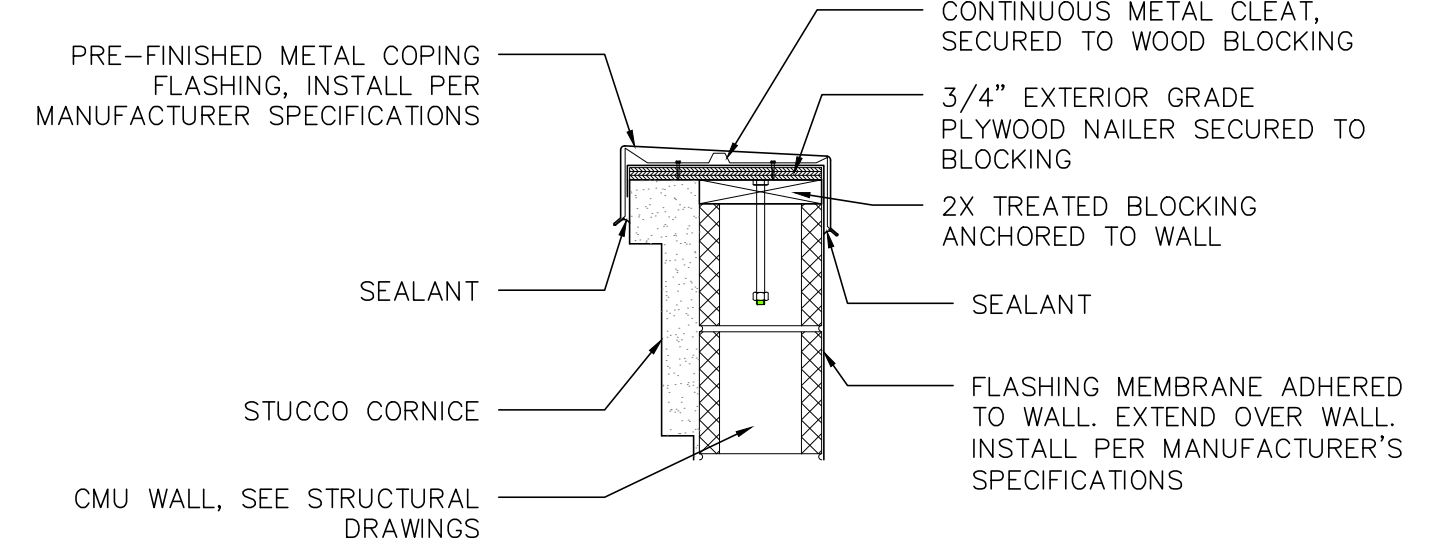
**1 SECTION**  
SCALE: 1/4" = 1'-0"



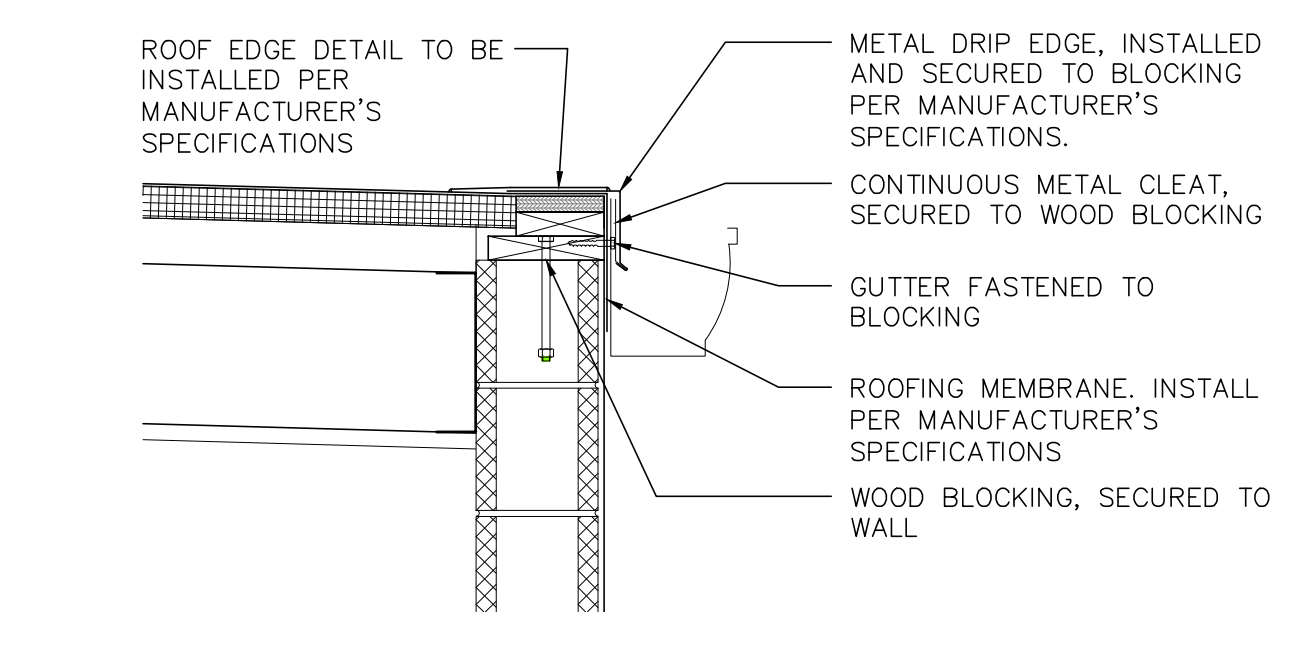
**2 WALL SECTION**  
SCALE: 1/2" = 1'-0"



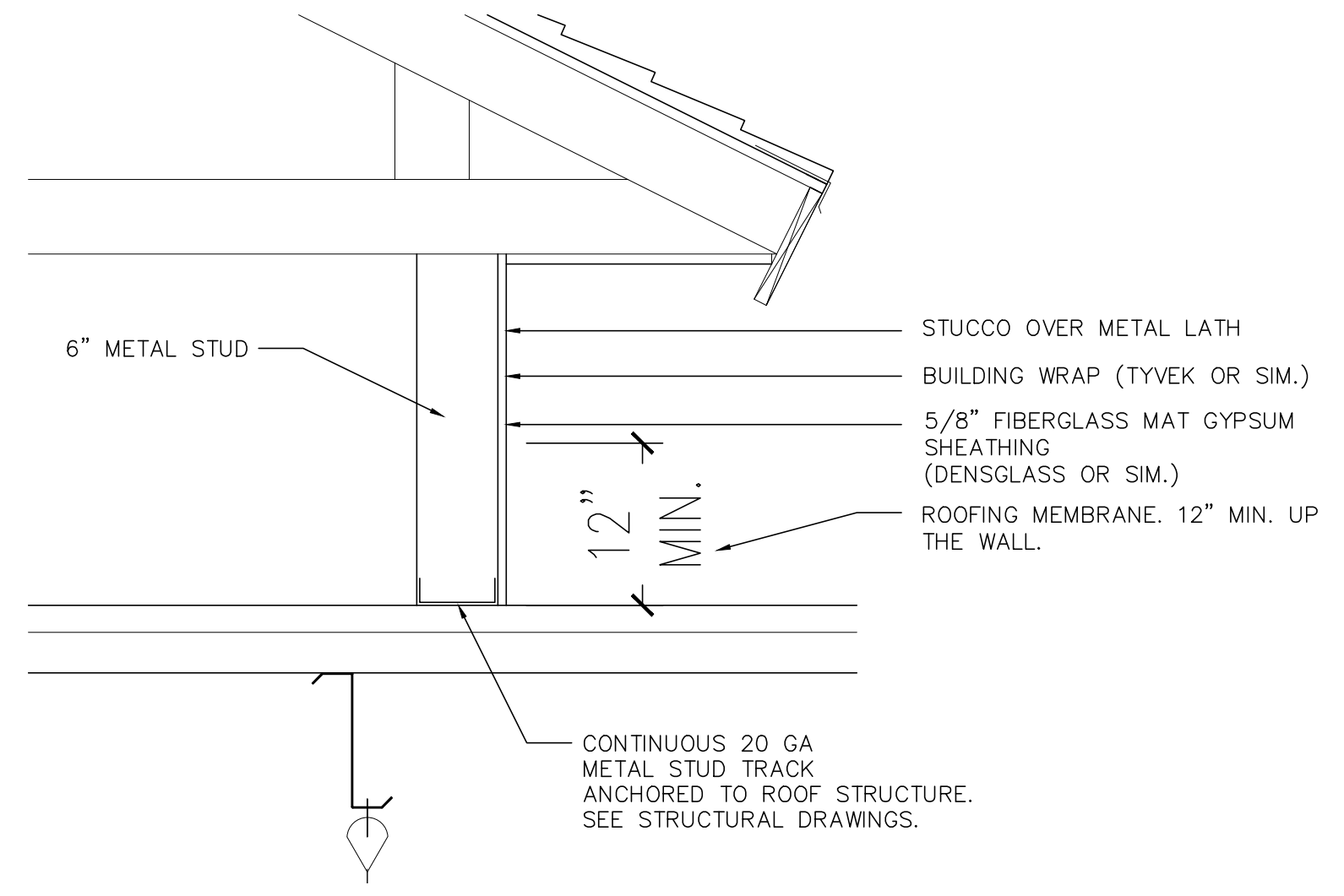
**3 WALL SECTION**  
SCALE: 1/2" = 1'-0"



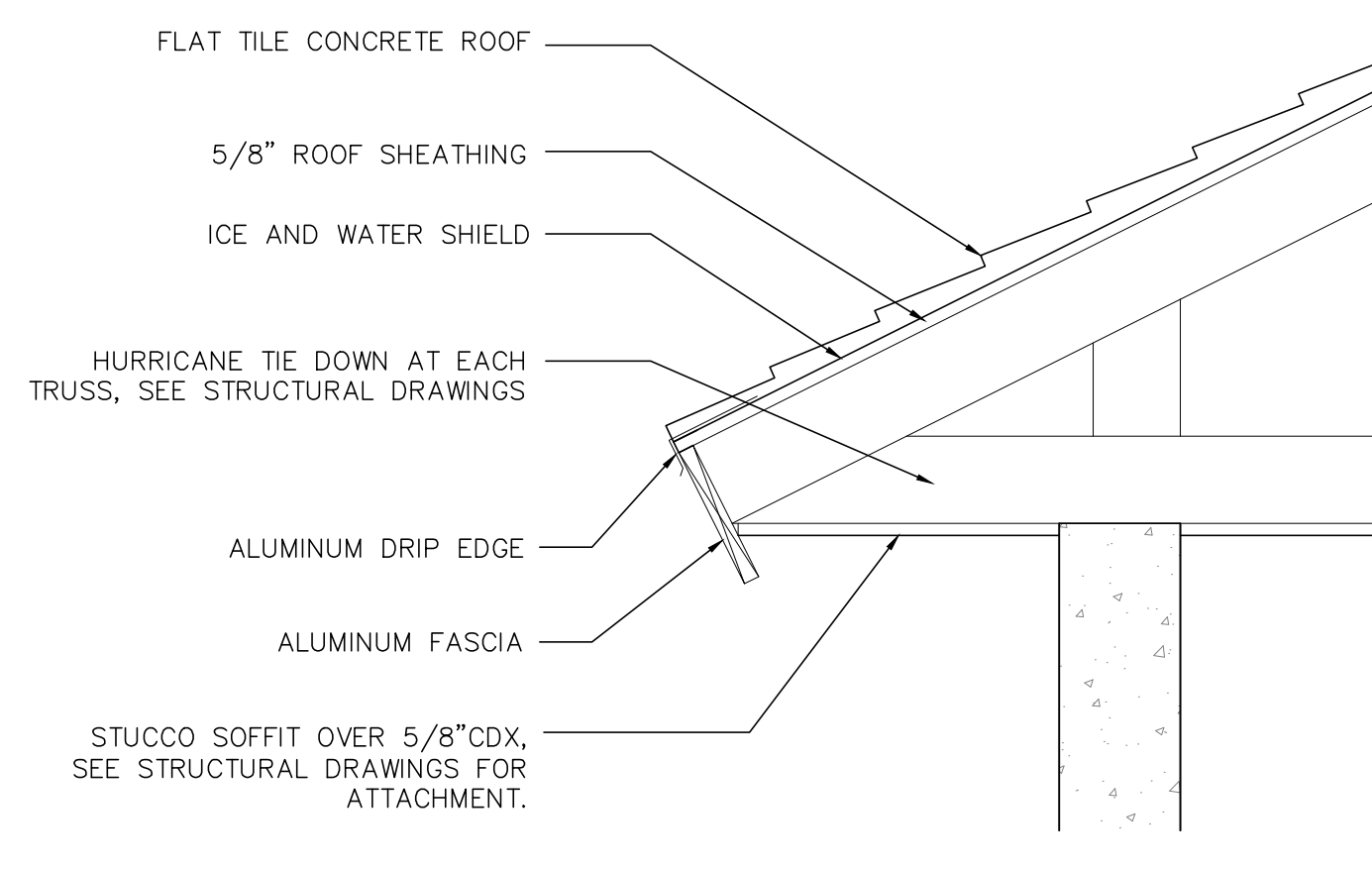
**4 COPING DETAILS**  
SCALE: 1" = 1'-0"



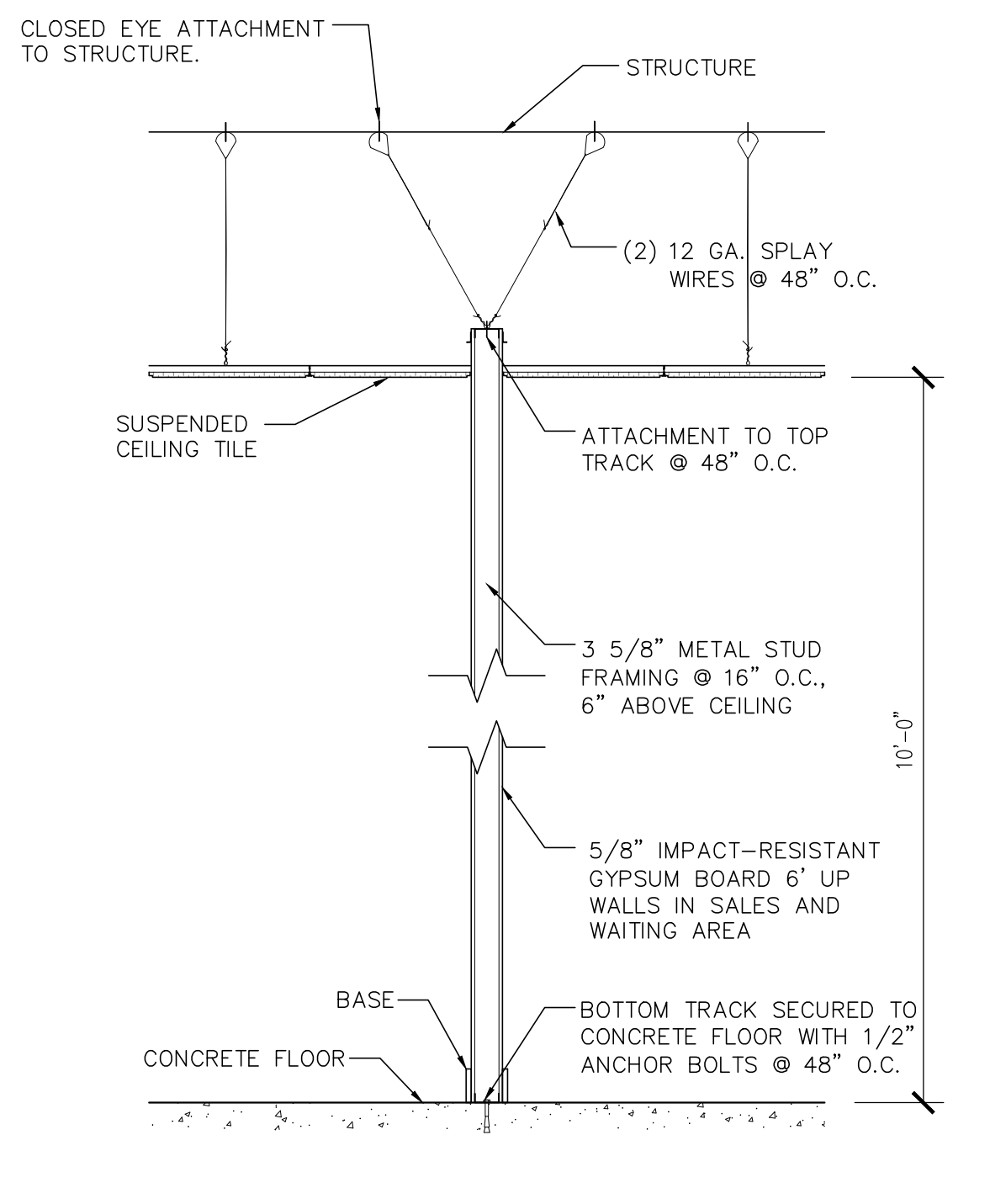
**5 ROOF EDGE DETAILS**  
SCALE: 1" = 1'-0"



**8 WALL TO ROOF DETAILS**  
SCALE: 1/2" = 1'-0"



**6 ROOF DETAILS**  
SCALE: 1" = 1'-0"



**7 INTERIOR PARTITION DETAILS**  
SCALE: 1/2" = 1'-0"

THESE DRAWINGS ARE COPYRIGHTED PROPERTY OF GOIA ARCHITECTURE LLC, NAPLES, FL. UNAUTHORIZED USE IS STRICTLY PROHIBITED.

REVISION	
REVISION	
REVISION	
REVISION	
REVISION	
DRAWN	
CHKD	LG
DATE	4-14-22
PROJECT NO.	21-22
DRAWING NO.	