

Creative Studio in the Central Eastside

WATER AVENUE COMMERCE CENTER
SUITE 215



BEAM



Water Ave Commerce Suite 215

1,875 **\$28/RSF** **AVAILABLE**
RSF **MG** **NOW**

BUILDING FEATURES

Located on SE Water Avenue, the Water Avenue Commerce Center (WACC) is a renovated, historic building that Boke Bowl, Bunk Bar, Water Avenue Coffee, and many creative companies call home. With the SE streetcar line just blocks to the east, an array of Central Eastside restaurants, bars, and services within easy walking distance, and quick access to downtown and I-5, the WACC is well connected to all Portland has to offer.

- Exposed wood ceilings
- Concrete floors
- Individually controlled HVAC
- Pet-friendly building
- Secure indoor bike parking
- Parking and storage available for an additional charge



Water Ave Commerce Suite 215

ABOUT THE SPACE

This lovely second-floor suite has an open floor plan, with conference room, 2 private offices, sever room and recently updated kitchenette with dishwasher - making it perfect for creative office users . Large windows fill the space with light. Tasteful finishes cabinets and shelves provide easy storage or display space.



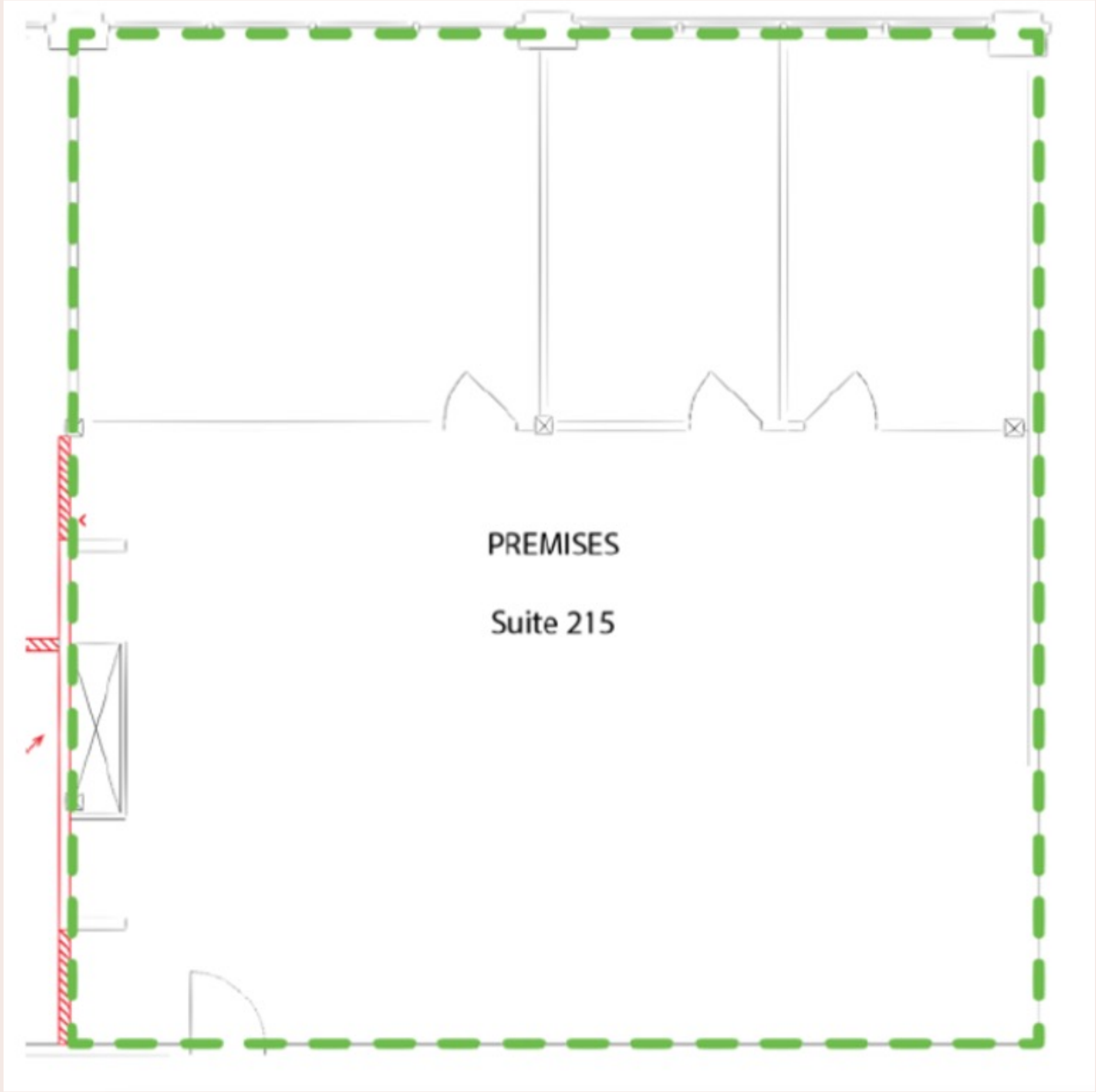


- A** Light-filled studio with large, operable windows
- B** Conference Room
- C** Private Offices
- D** Tall 16' Ceilings



Water Ave Commerce Suite 215

Floor Plan



Beam Development.

Working to activate the potential of the Central Eastside for over 20 years.

Beam Development is a real estate development and management company located in Portland, Oregon.

Over the past two decades, Beam's development activities have been guided by a few core principles: invest for the long-term in central city neighborhoods, champion smart and inspiring design, and build meaningful connections across our work. Located primarily in Portland's Central Eastside, Beam's development portfolio includes 1,000,000 SF of completed projects and 60,000 SF in pre-development.

Beam is proud of its track record of partnering with tenants to support their success. We look forward to hearing your story and seeing how great workspace can help write the next chapter.

For leasing information contact:

LEASING TEAM

503-542-8420

leasing@beamdevelopment.com

