

OFFICE/MEDICAL SPACE FOR LEASE

University Professional Center

3500 E FLETCHER AVENUE • TAMPA, FL • 33613



NEW LOOK!
\$2M MASSIVE
RENOVATION

RENOVATIONS INCLUDE:

- Expansive Glass Lobby
- New Porte-Cochere
- New Exterior Paint
- Repaved Parking
- Fully Refurbished Common Areas & Restrooms
- Enhanced Landscaping

PROPERTY OVERVIEW

Property Type	Office / Medical Office
Property Size	99,048 sf (5 floors)
Year Built	1976, Renovated 2019
Parking Ratio	3.7/1,000

PROPERTY FEATURES

- + Beautifully renovated 5-story office building, ideal for professional or medical use
- + Tenant Improvement allowance available for qualified leases (contact agent for details)
- + Monument signage opportunities along E Fletcher Ave
- + Porte-cochere for convenient drop-off/pick-up and abundant parking



LOCATION

- + Located directly across from The University of South Florida
- + Walking distance to Florida Hospital Tampa and Pepin Heart Institute
- + Within close proximity to the VA Hospital, John Hopkins All Children's Outpatient Care, Shriners Hospital for Children, and Moffitt Cancer Center
- + Situated just off Bruce B Downs Blvd with convenient access to Bearss Ave, Fowler Ave, I-275 and I-75

For additional information, contact:

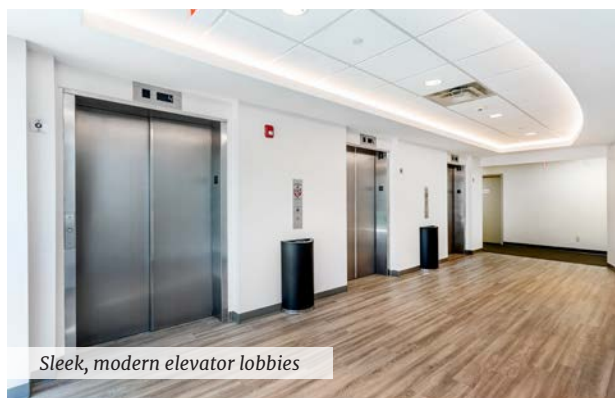
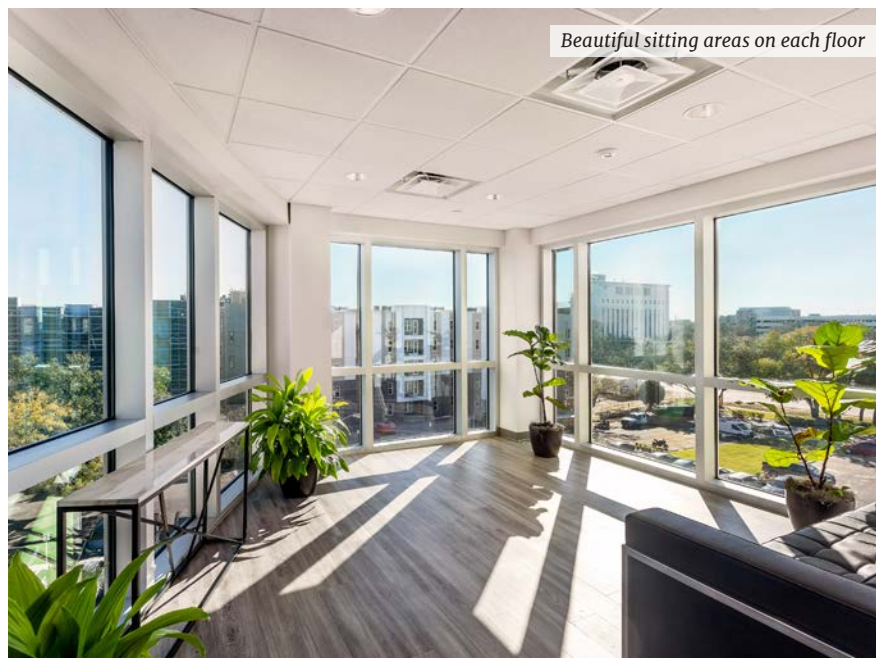
Thomas Hernandez, SIOR, CCIM
(813) 494-4090 mobile
thernandez@ciminelli.com



OFFICE/MEDICAL SPACE FOR LEASE

University Professional Center

3500 E FLETCHER AVENUE • TAMPA, FL • 33613



Sleek, modern elevator lobbies

For additional information, contact:

Thomas Hernandez, SIOR, CCIM
 (813) 494-4090 mobile
 thernandez@ciminelli.com



4100 W Kennedy Blvd Suite 105 • Tampa, FL 33609 + phone: (813) 908-1727 + www.CiminelliFlorida.com

All information given herein is obtained from sources considered reliable. However, we are not responsible for misstatement of facts, errors, omissions, prior sale, withdrawal from market, modification of mortgage commitment, terms and considerations, or change in price without notice. The information supplied herein is for informational purposes only and shall not contain a warranty or assurance that said information is correct. Any person intending to rely upon the information supplied herein should verify said information independently.