

RETAIL AND DEVELOPMENT OPPORTUNITY FOR SALE



1821-1855 COUNTY STREET

Somerset, MA 02726

DAN FEINER

Vice President
401.751.3200 x3310
dan@mgcommercial.com

GEORGE PASKALIS, SIOR

Partner
401.751.3200 x3303
george@mgcommercial.com

MG COMMERCIAL

365 Eddy Street, Penthouse Suite
Providence, RI 02903
401.751.3200 | mgcommercial.com

PROPERTY SUMMARY



PROPERTY DESCRIPTION

Turn-Key opportunity consisting of a 1.13-acre parcel improved by 3 separate multifunctional buildings licensed for auto dealership, auto-repair/service & car rental. This fully equipped facility includes multiple lifts, compressors, garages, a detailing area, as well as built-out office space (including a kitchen for new owner to utilize or lease up). Currently, the three buildings include an operational mechanics shop, flexible business-storage space.

PROPERTY HIGHLIGHTS

- Three Multifunctional Buildings
- 300' of Frontage along County Street
- Situated on 1.13 Acres
- Licensed for 104 Cars
- Potential Rental Income
- Site Security System/Cameras
- 9,200 Car Traffic Count

LOCATION DESCRIPTION

The subject property is well located on the highly visible County Street (RT 138) at the intersection of Marble Street. and only 15 minutes from Fall River and the Swansea Mall respectively. County Street is a core retail and commercial corridor within Somerset, MA, which has a traffic count of over 9,200 cars per day. The property has over 300 feet of frontage and is ideal for its current use or for redevelopment.

OFFERING SUMMARY

| | |
|----------------|-------------|
| Sale Price: | \$2,850,000 |
| Lot Size: | 49,397 SF |
| Building Size: | 7,142 SF |

| DEMOGRAPHICS | 2 MILES | 3 MILES | 5 MILES |
|-------------------|-----------|-----------|----------|
| Total Households | 8,587 | 16,084 | 46,630 |
| Total Population | 21,277 | 39,360 | 109,942 |
| Average HH Income | \$113,199 | \$109,807 | \$89,794 |

DAN FEINER
Vice President
401.751.3200 x3310
dan@mgcommercial.com

GEORGE PASKALIS, SIOR
Partner
401.751.3200 x3303
george@mgcommercial.com

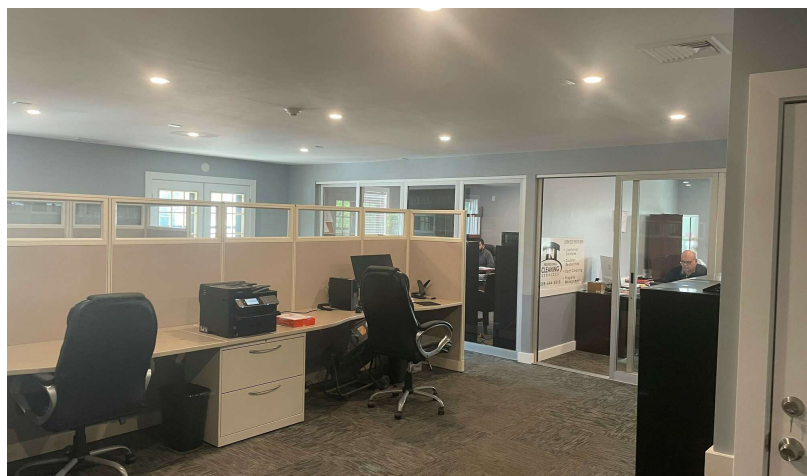
365 Eddy Street, Penthouse Suite
Providence, RI 02903
mgcommercial.com



1821-1855 COUNTY STREET | Somerset, MA 02726

RETAIL AND DEVELOPMENT OPPORTUNITY FOR SALE

ADDITIONAL PHOTOS



DAN FEINER
Vice President
401.751.3200 x3310
dan@mgcommercial.com

GEORGE PASKALIS, SIOR
Partner
401.751.3200 x3303
george@mgcommercial.com

365 Eddy Street, Penthouse Suite
Providence, RI 02903
mgcommercial.com

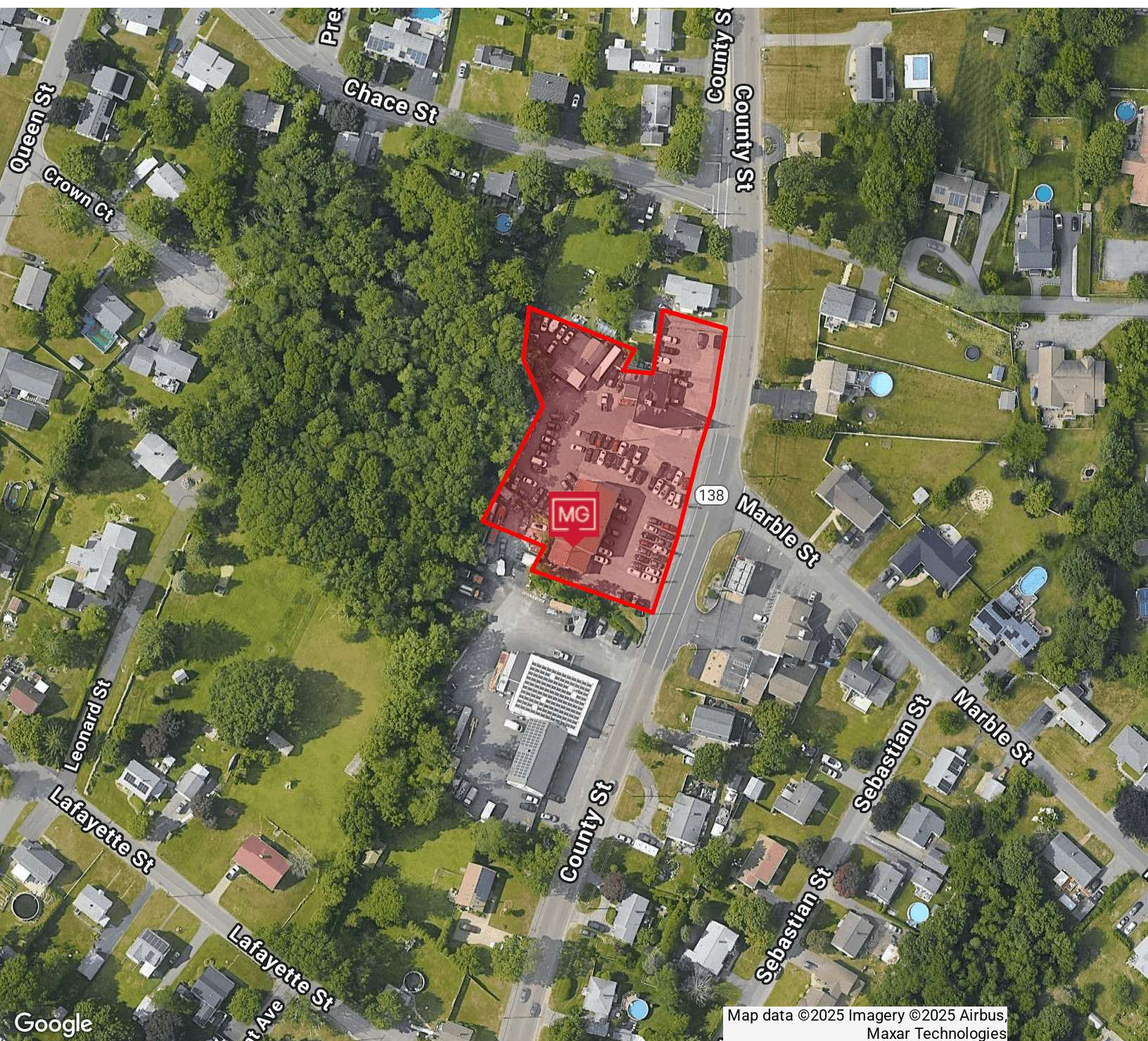


This information has been secured from sources we believe to be reliable, but we make no representation or warranties, expressed or implied, as to the accuracy of the information. All references to age, sq. footage, income, and expenses are approximate. Buyers should conduct their own independent investigations and rely only on those results.

1821-1855 COUNTY STREET | Somerset, MA 02726

RETAIL AND DEVELOPMENT OPPORTUNITY FOR SALE

RETAILER MAP



Map data ©2025 Imagery ©2025 Airbus,
Maxar Technologies

DAN FEINER
Vice President
401.751.3200 x3310
dan@mgcommercial.com

GEORGE PASKALIS, SIOR
Partner
401.751.3200 x3303
george@mgcommercial.com

365 Eddy Street, Penthouse Suite
Providence, RI 02903
mgcommercial.com



This information has been secured from sources we believe to be reliable, but we make no representation or warranties, expressed or implied, as to the accuracy of the information. All references to age, sq. footage, income, and expenses are approximate. Buyers should conduct their own independent investigations and rely only on those results.