

FOR LEASE

215 S WELLS AVENUE & 240-260 WELLS STREET
RENO, NV 89502

Highlights:

- Great visibility
- Signalized intersection
- Densely populated
- Excellent traffic counts
- Close to i-80 and i-580 freeways

Traffic Counts:

S. Wells Ave: 20,669 Cars ADT

Ryland St: 9,181 Cars ADT

Parker Executive Suites Available

From 100-321 SF Available

Amenities Included:

- Conference Room
- Kitchenette
- Wi-Fi

Available Spring 2024



For more information about this property, please contact owner:

Craig Duhs
(619) 540-1001
Craig@DuhsCommercial.com
CA License: 01086079



COMMERCIAL
BROKERAGE • INVESTMENT • DEVELOPMENT

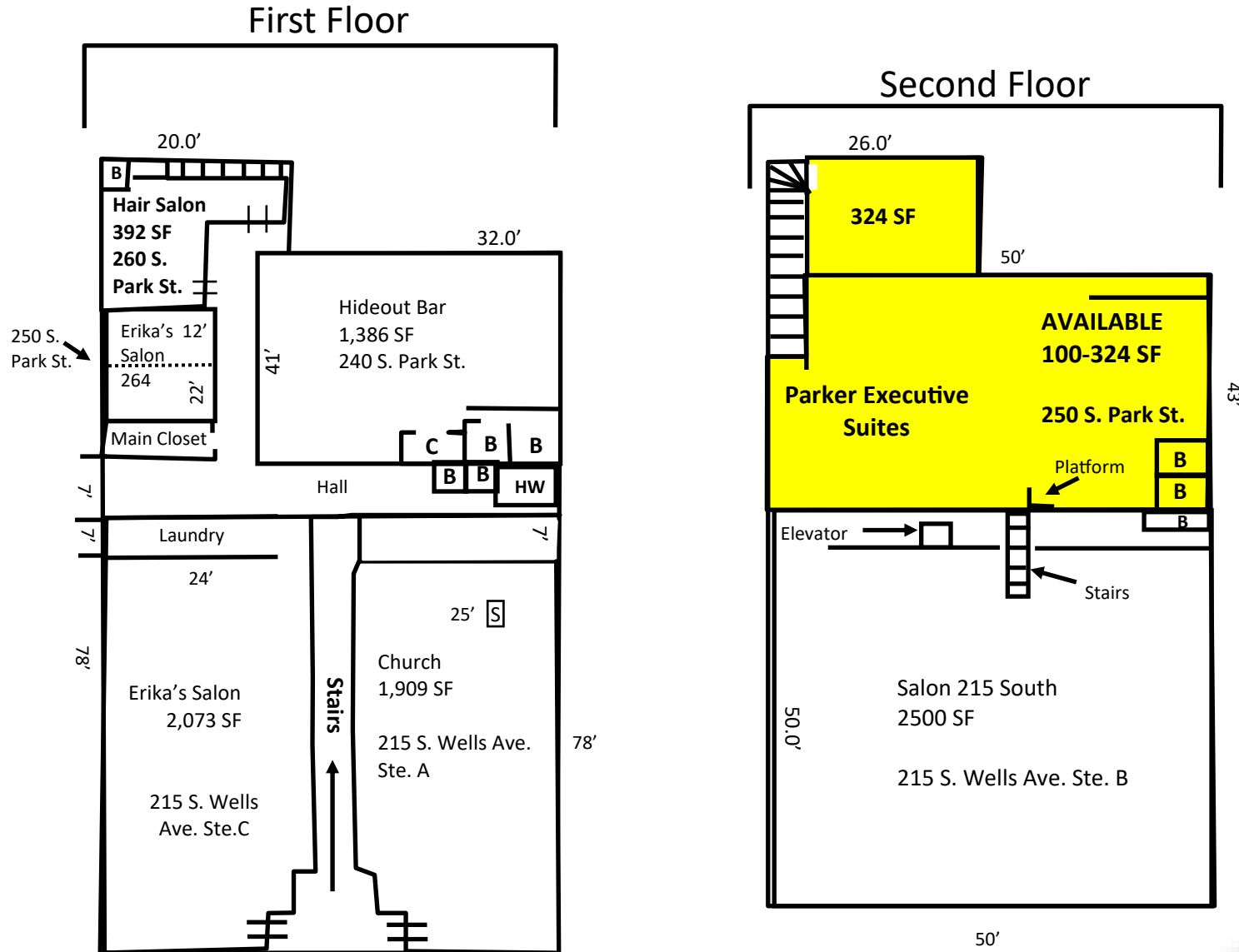
No warranty or representation is made to the accuracy of the foregoing information. Terms of sale or lease and availability are subject to change or withdrawal without notice.
3830 Ray Street, San Diego, CA 92104 | Phone (619) 491-0335 | Fax (619) 491-0696 | www.DuhsCommercial.com

SITE SOURCE
RETAIL BROKER NETWORK
FOR SALE BY OWNER

FLOOR PLAN

215 S WELLS AVENUE & 240-260 WELLS STREET
RENO, NV 89502

***Parker Executive Suites from 100 SF – 324 SF**



***Prices are Negotiable for all Available Spaces**

S WELLS AVENUE



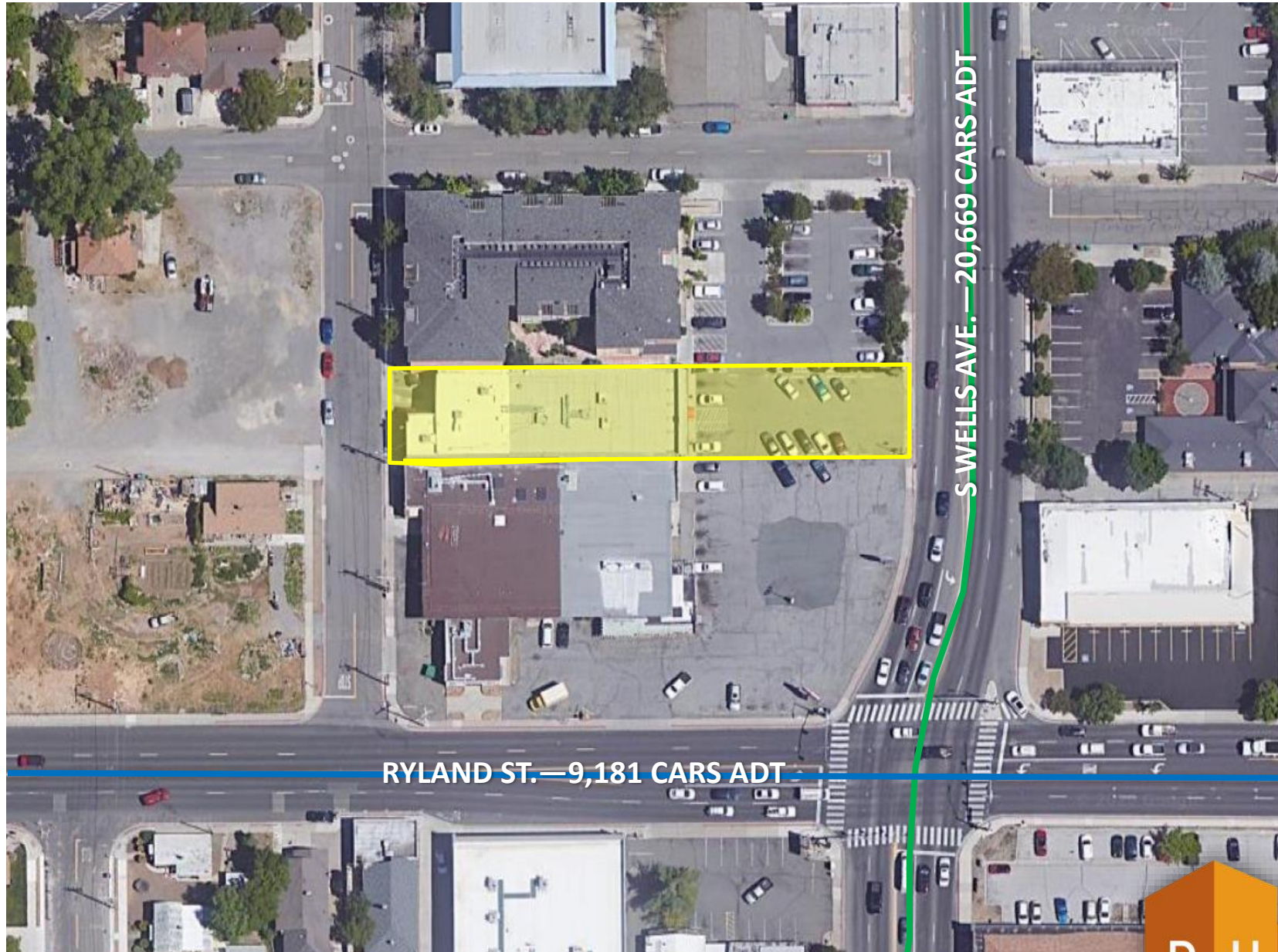
COMMERCIAL
BROKERAGE • INVESTMENT • DEVELOPMENT

No warranty or representation is made to the accuracy of the foregoing information. Terms of sale or lease and availability are subject to change or withdrawal without notice.

3830 Ray Street, San Diego, CA 92104 | Phone (619) 491-0335 | Fax (619) 491-0696 | www.DuhsCommercial.com

SITE PLAN

215 S WELLS AVENUE & 240-260 WELLS STREET
RENO, NV 89502



COMMERCIAL
BROKERAGE • INVESTMENT • DEVELOPMENT

No warranty or representation is made to the accuracy of the foregoing information. Terms of sale or lease and availability are subject to change or withdrawal without notice.

3830 Ray Street, San Diego, CA 92104 | Phone (619) 491-0335 | Fax (619) 491-0696 | www.DuhsCommercial.com

STREET VIEW

215 S WELLS AVENUE & 240-260 WELLS STREET
RENO, NV 89502



S WELLS AVE.—20,669 CARS ADT

No warranty or representation is made to the accuracy of the foregoing information. Terms of sale or lease and availability are subject to change or withdrawal without notice.

3830 Ray Street, San Diego, CA 92104 | Phone (619) 491-0335 | Fax (619) 491-0696 | www.DuhsCommercial.com



AERIAL

215 S WELLS AVENUE & 240-260 WELLS STREET
RENO, NV 89502



No warranty or representation is made to the accuracy of the foregoing information. Terms of sale or lease and availability are subject to change or withdrawal without notice.

3830 Ray Street, San Diego, CA 92104 | Phone (619) 491-0335 | Fax (619) 491-0696 | www.DuhsCommercial.com