



# 1950

OXFORD STREET  
BERKELEY, CALIFORNIA

**RETAIL OPPORTUNITY  
ACROSS FROM  
UC BERKELEY CAMPUS**

---

HELLEN DILLER ANCHOR HOUSE

maven  
RETAIL





## STATE OF THE ART DEVELOPMENT

Located at the corner of University Avenue and Oxford Street, Hellen Diller Anchor House is a transformative project that will set a new standard for student residential living and help transfer students to thrive academically, socially, and culturally. The net income generated by the property will fund scholarships for undergraduates from underrepresented populations and first-generation college students.

The certified LEED Gold building includes 244 apartments with individual bedrooms for 772 students, a rooftop garden, a culinary classroom, a gym, and well-designed retail spaces. Situated in the perimeter of the UC Berkeley campus and only 3 blocks from the Berkeley BART station, Anchor House adds much needed housing to the UC Berkeley student body, where a significant percentage of students are challenged to live on or near campus. Anchor House is currently in the construction phase, and retail spaces are expected to be delivered midyear 2023.

The design of Anchor House seeks to set a higher standard for student residential living. The project team is composed of award-winning design firms, including lead design architects Morris Adjmi Architects, locally based architects BDE, Brand Bureau/AvroKO for experience and interior design, and Andrea Cochran Landscape Architecture for the landscape design.





The Anchor House features some of the best new retail space in Berkeley and sits at the base of a 776-bed student housing project that supports the retail. Anchored by the Cal Bookstore, these well-designed side-by-side spaces can be delivered in a warm shell condition and potentially with restaurant infrastructure.



## RETAIL OPPORTUNITY

- +/- 955 SF
- 20-25 foot ceilings
- Anchored by the Cal Bookstore
- Signed leases with local favorites Palmetto Super Foods
- Palmetto Superfoods is a restaurant concept designed around authentic and nutritious foods, extensive customization, and top-of-the-line service. They have made their name serving signature Brazilian açai, but also offer a variety of different bases and quality ingredients to personalize customers bowl or smoothie.
- 2,200 SF rooftop vegetable garden can compliment a grocery or restaurant use
- Can be delivered with restaurant infrastructure
- 2 tandem parking spaces per retail space
- The project promotes environmental stewardship and financial sustainability
- Situated at the base of a 776-bed student housing project



**1950 OXFORD STREET**

**BARKER HALL**

**BANCROFT LIBRARY**

**THE GREEK THEATRE**

**EDWARDS STADIUM**

**WHEELER HALL AUDITORIUM**

**BERKELEY SCHOOL OF LAW**

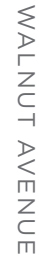
**CALIFORNIA MEMORIAL STADIUM**

**BERKELEY CITY CLUB**

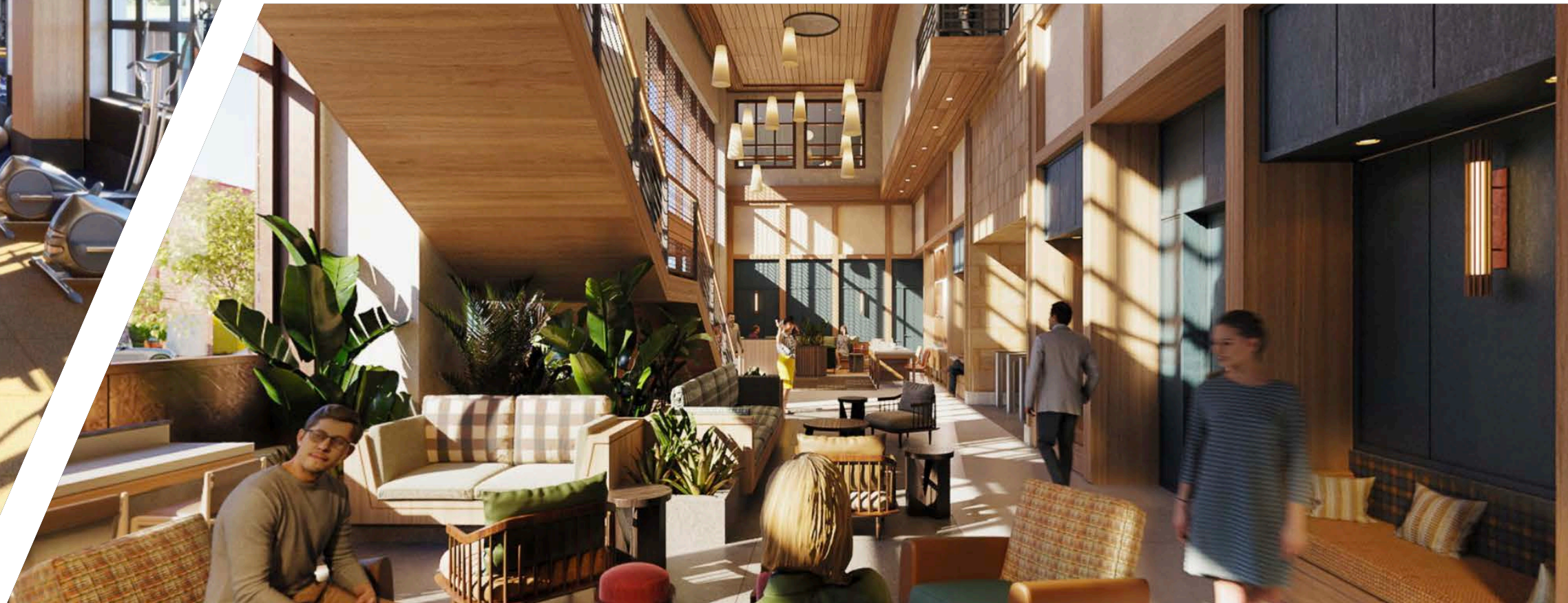
**97 WALK SCORE**

**88 BIKE SCORE**

**OAKLAND**







## PROJECT COMPONENTS

- 776-bed student housing project
- Groundfloor community-serving commercial and retail spaces
- Culinary classroom for the Rausser College of Natural Resources
- Event venues, dining spaces, and public spaces open to the community
- Maker's space run by the Berkeley Art Studio with classes for students and the community
- 7,100 SF student gym
- 2,100 SF rooftop vegetable garden





COME JOIN US  
IN BERKELEY.



SHAKE  
SHACK



IPPUDO



Peet's Coffee



CORNERSTONE  
BERKELEY



1950  
OXFORD STREET  
NEIGHBORS



THE CHEESE BOARD COLLECTIVE



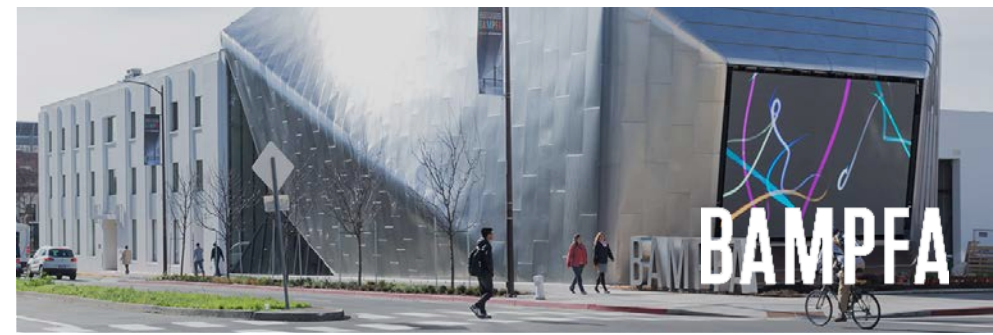
CREPEVINE  
RESTAURANT



sweetgreen



BERKELEY FILM



BAMPFA



THE BUTCHER'S  
SON



七七集  
Kiraku



5年 GREAT CHINA



Angeline's  
LOUISIANA KITCHEN



# KEY FACTS

BERKELEY | CALIFORNIA



**\$71,416**  
MEDIAN HOUSEHOLD  
INCOME



**3,115**  
TOTAL BUSINESSES



**66,191**  
TOTAL EMPLOYEES



**85.3%**  
WHITE COLLAR  
POPULATION



**80%** OF RESIDENTS POSSESS BACHELOR'S/  
GRAD/OR POST-GRAD DEGREE

# 1950 Oxford Street

BERKELEY | CALIFORNIA

maven  
RETAIL

## Contacts

**CATHERINE MEUNIER**  
office 415.806.5566  
catherine@mavenproperties.com  
DRE #01843732

**PAMELA MENDELSON**  
office 415.404.6650  
pam@mavenproperties.com  
DRE #00953050

**HALLIE FORMAN**  
office 415.426.7808  
hallie@mavenproperties.com  
DRE #02252563

NOTICE: This information has been secured from sources we believe to be reliable but we make no representations, warranties, express or implied, as to the accuracy of the information. Listing broker has been given enough information to provide only a preliminary interest in the property. The materials are not to be considered fact. The information contained herein is not a substitute for thorough due diligence investigation. References to square footage, zoning, use, or age are approximate. Please contact the San Francisco Planning Department to verify zoning at (415) 558-6378, as neither broker or landlord represent that this space is suitable for your use. Tenant or Buyer must verify the information at their own expense and bears all the risk for any inaccuracies. By receiving these materials you are agreeing to the disclaimers set forth herein. DRE#01878802

466 Green Street Suite #203 | San Francisco, CA 94133  
415-781-7700 | [www.mavenproperties.com](http://www.mavenproperties.com)