

For Lease
866 South 500 West
Salt Lake City, UT



LEASE RATE

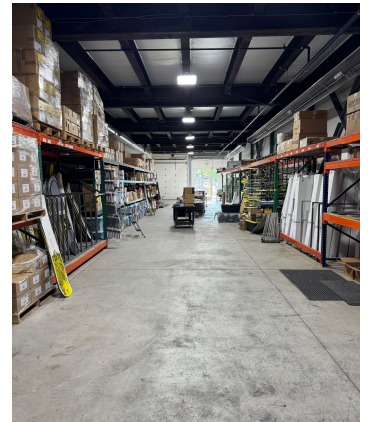
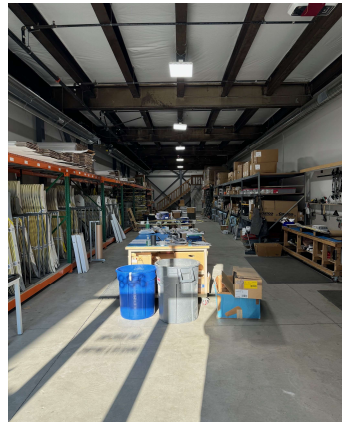
\$1.40
PSF NNN

PROPERTY DETAILS

Total SF.....2,800 SF
Free Structured Mezzanine.....2,400 SF
Doors.....(1) 10' x 12' GL
Ceiling.....14'
Power.....3 Phase
(ample power can be brought in)

HIGHLIGHTS

- Temperature controlled throughout the space
- New Radiant Heaters on the main floor
- LED lighting throughout
- Large glass window in the mezzanine providing abundant natural light
- Within less than one minute of the nearest freeway entrance
- Fire Sprinkled



CONTACT

Bob Mills

385.988.6477
bob@adventut.com

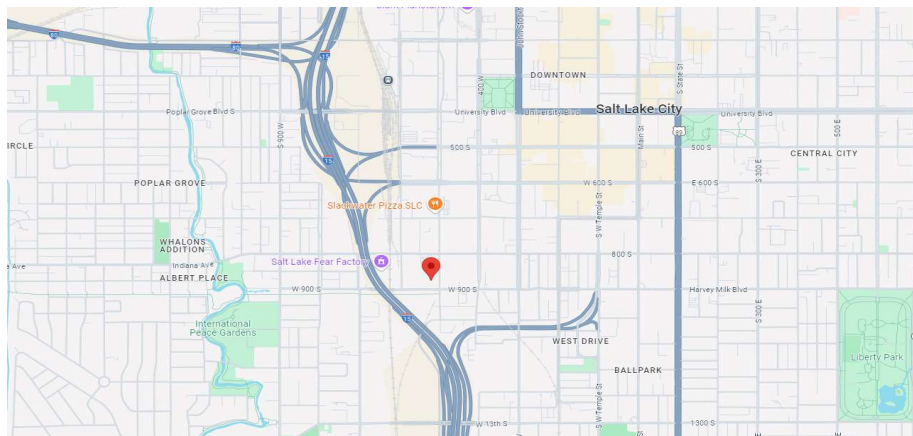
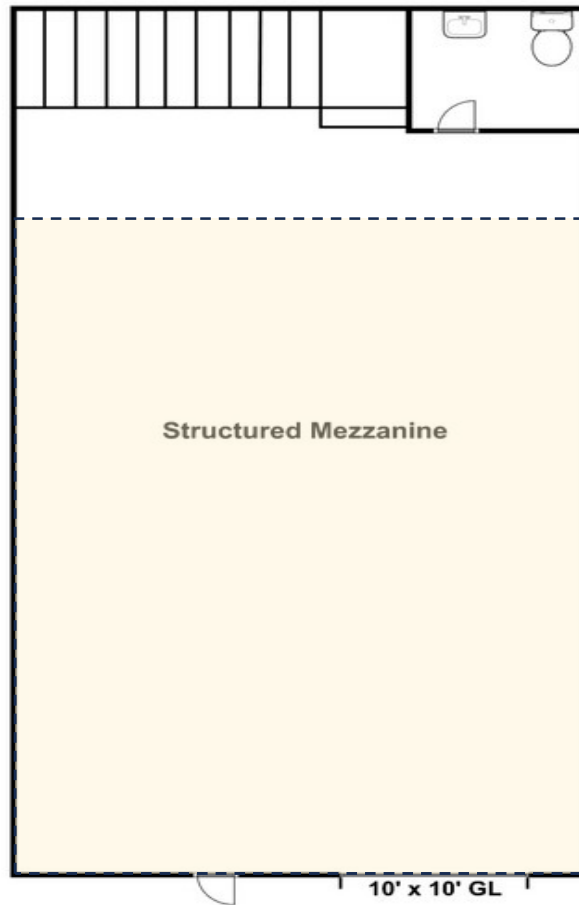
Riley Mills

385.988.6478
riley@adventut.com



5284 S. Commerce Dr. #C 274, Murray, Utah 84107 / o:801.433.2480 f: 801.290.3172

For Lease
866 South 500 West
Salt Lake City, UT



5284 S. Commerce Dr. #C 274, Murray, Utah 84107 / o:801.433.2480 f: 801.290.3172