

- **Location:** SWC Jomax Rd & 195th Ave
- **Size:** Two Parcels
 - Parcel 1: 27.28 Acres
 - Parcel 2: 60.86 Acres
- **Zoning:** Maricopa County RU-43 (General Plan for Industrial Employment)
- **Price:** \$5,100,000
- **Comments:**
 - ✓ Properties are located along major section line arterials in the Northwest Valley submarket which continues to lead the Phoenix MSA in growth for residential and employment uses. Site is primed for investment, development, or 1031 exchange.

Great Investment Opportunity | Exclusively Available

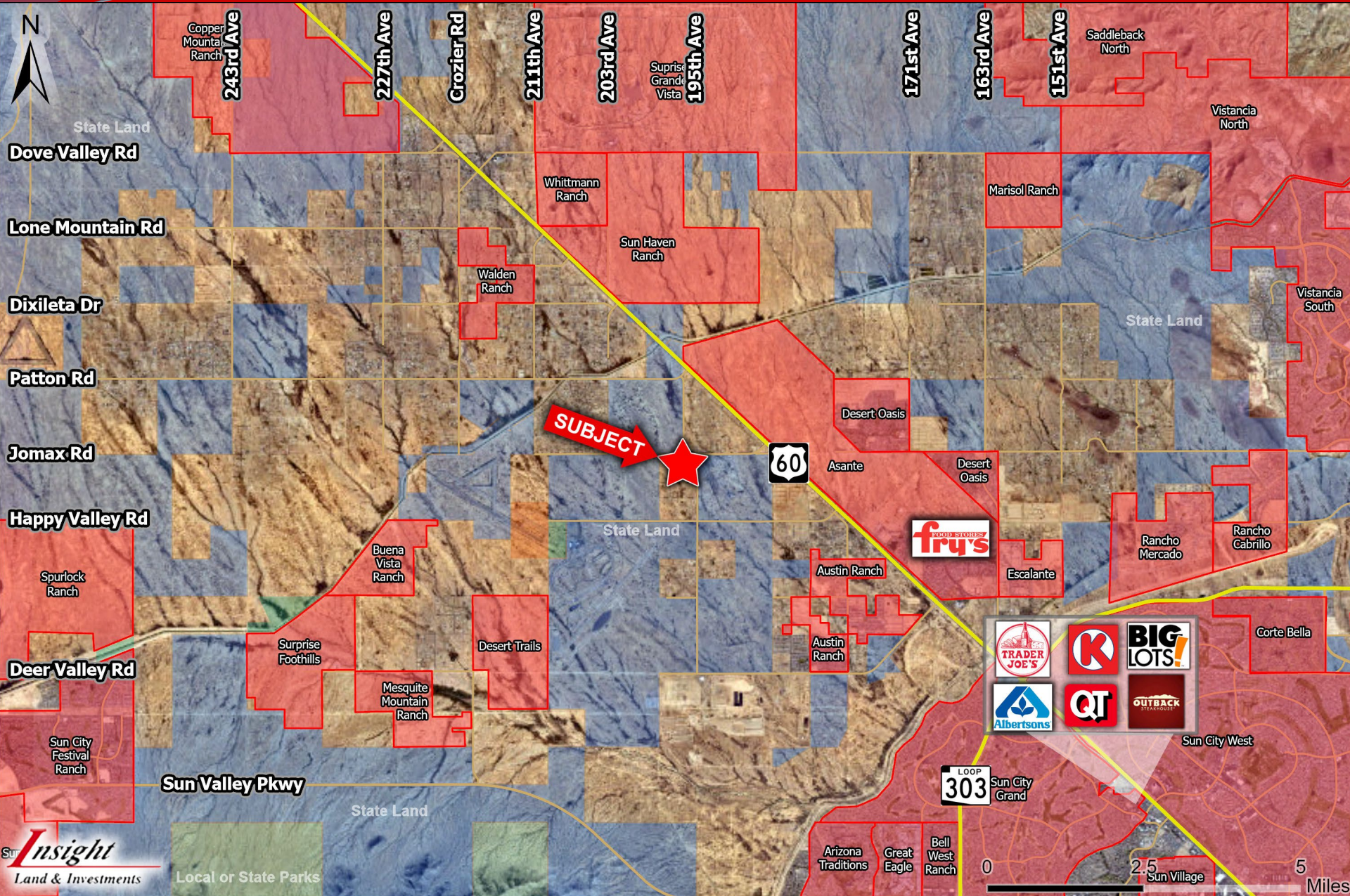
Insight Land & Investments
7400 E McDonald Dr, Ste 121
Scottsdale, Arizona 85250
602.385.1535
www.insightland.com

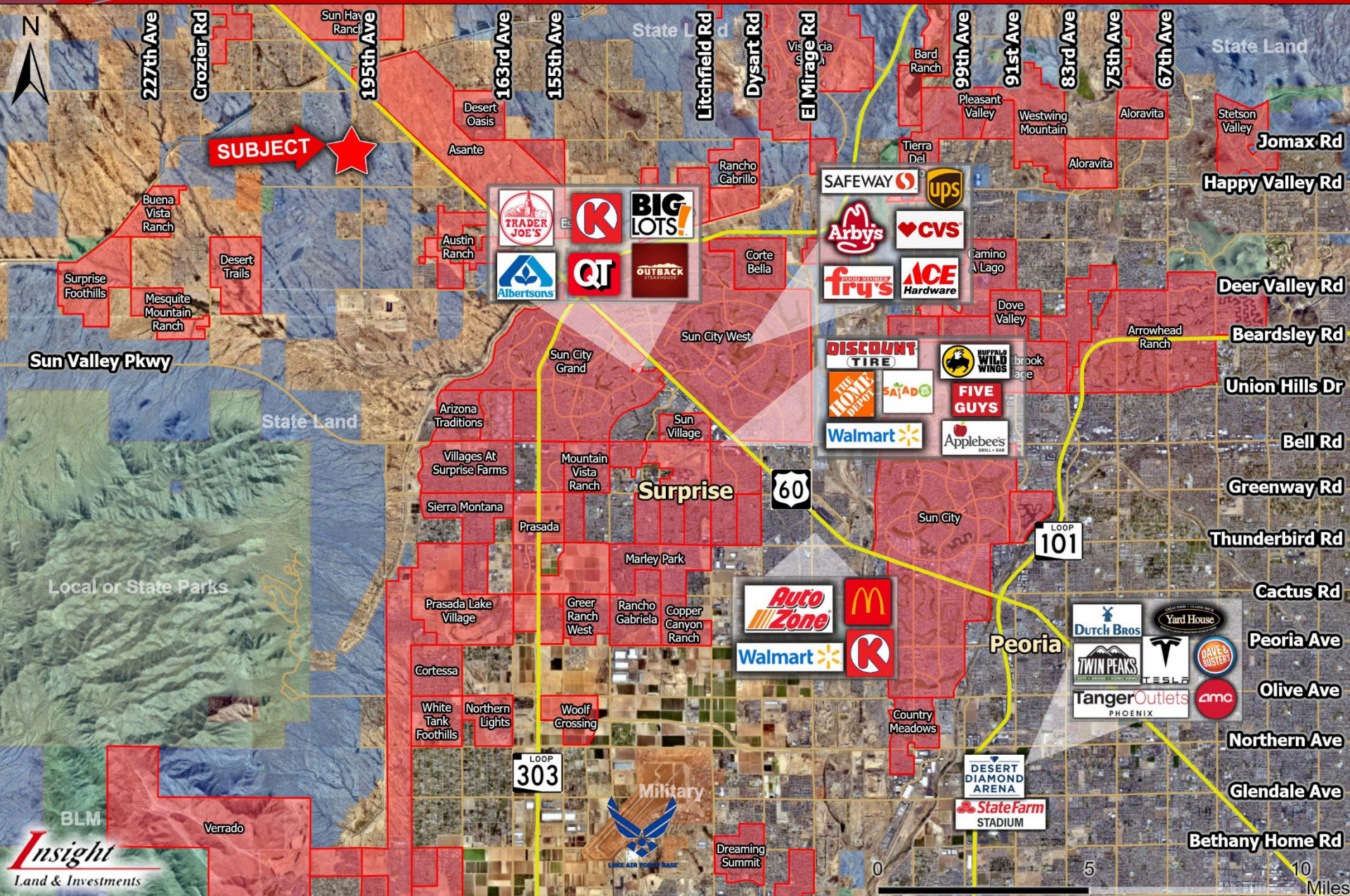
All information furnished regarding property for sale, rental or financing is from sources deemed reliable, but no warranty or representation is made to the accuracy thereof and some is subject to errors, omissions, change of price, rental or other conditions prior to sale, lease or financing or withdrawal without notice. No liability of any kind is to be imposed on the broker herein.

BRIAN STILLMAN
Direct: 602-385-1512
bstillman@insightland.com

JEREMY LOVEJOY
Direct: 602-385-1525
jlovejoy@insightland.com

MATT RINZLER
Direct: 602-385-1534
mrinzler@insightland.com

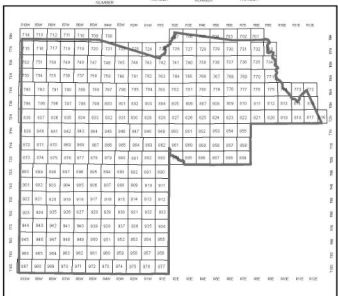
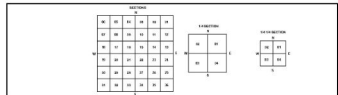





MARICOPA COUNTY
STATE OF ARIZONA

PT. SECTION 5 T04N R02W

785 - 05 - 01 - 00





Parcels updated within this map



0 50 100 200 300 400 500 Feet

MARICOPA COUNTY
ASSESSOR'S OFFICE
301 W. Jefferson Street
Phoenix, AZ 85003
Date: 5/27/2022
<https://mcaassessor.maricopa.gov>



LEGEND:
 Parcels
 Sections
 Centerlines
 Lots
 Section Corners
 Subdivisions

Disclaimer - Indemnification
CAUTION: USERS SHOULD INDEPENDENTLY RESEARCH AND VERIFY INFORMATION WITHIN THIS DATASET OR MAP BEFORE RELYING ON IT.
 The Assessor's Office has compiled information within this dataset or map that it uses to identify, classify, and value real and personal property. Please contact the Assessor's Office at 602 506-3406 if you believe any information is incomplete, out-of-date, or incorrect so that appropriate corrections can be addressed. Please note that a statutory process is also available to correct errors pursuant to Arizona Revised Statutes 42-16254.
 The Assessor does not guarantee that any information contained within this dataset or map is accurate, complete or current. In many instances, the Assessor has gathered information from independent sources and made it available within this dataset or map, and the original information may have contained errors and omissions. Errors and omissions may have occurred in the process of gathering, interpreting, and reporting the information. Information within this dataset or map is not updated "real time." In addition, Users are cautioned that the process used within this dataset or map to illustrate the boundaries of adjacent parcels is not always consistent with the recorded documents for such parcels. The parcel boundaries depicted within this dataset or maps are for illustrative purposes only, and the exact relationship of adjacent parcels should be independently researched and verified. The information provided within this dataset or map is not the equivalent of a title report or a real estate survey. Users should independently research, investigate, and verify all information before relying on it or using it in the preparation of legal documents.

