

23,047 SF - Office/Medical Building



Rendering Photo



Contact Us

Jennifer Gosselin

Vice President

+1 860 987 4734

jennifer.gosselin@cbre.com

23,047 SF - Office/Medical Building Available

BroadPeak at Barnes Park | 97 Barnes Road | Wallingford, CT 06492

For Sale/Lease

Office/Medical Building

23,047 SF

CBRE has been retained to lease BroadPeak at Barnes Park, 97 Barnes Road in Wallingford, CT. 97 Barnes is an attractive one-story multi-tenant building. The building has stunning views overlooking the western landscape and sits on 5.1 acres. 97 Barnes has a flexible layout for new tenants. A combination of three private offices, reception, conference room, kitchen/break room and a private restroom. Recent buildouts of modern, open and collaborative spaces. The park like setting provides an office/medical user with nicely landscaped grounds, ample parking areas, outside seating, and easy access to nearby amenities.

The new BroadPeak campus at Barnes Park is going to elevate the medical office community with the planned renovations to the site.

Building Specifications

- + 23,047 SF total on 5.1 acres
- + Available Space for Lease
 - 1,200 SF & 2,185 SF
 - 1,900 SF & 6,035 SF (adjacent space)
 - 11,320 SF total combined
- + Established referral base
- + 5/1,000 SF parking
- + Building any pylon signage available
- + Picturesque views
- + IX Zoned
- + Wallingford Electric - reduced rates
- + **Lease Rate:** \$20.00-\$22.00/SF modified gross (Office)
\$20.00-\$22.00/SF NNN (Medical)
- + **Sale Price:** \$3.9M

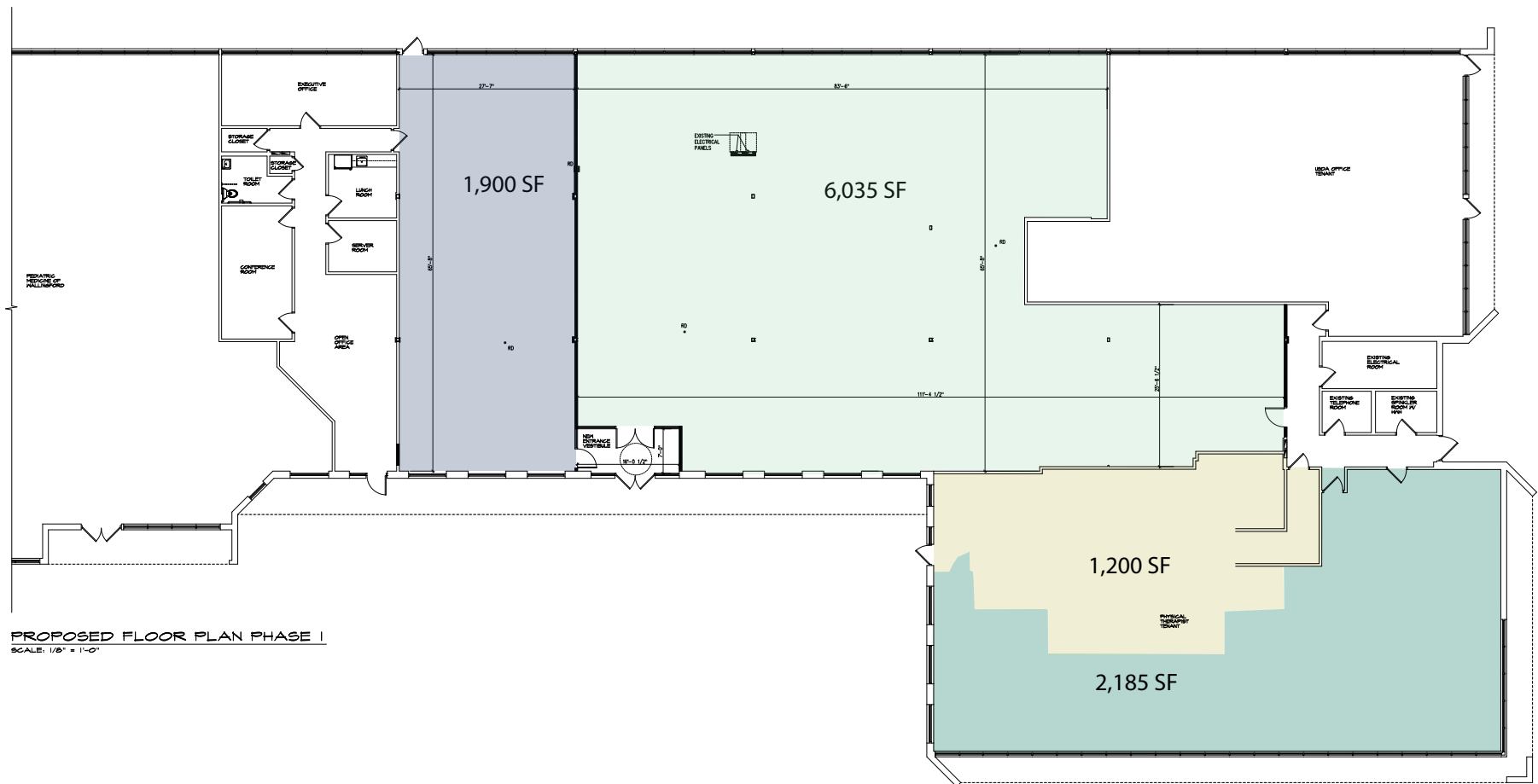


23,047 SF - Office/Medical Building Available

BroadPeak at Barnes Park | 97 Barnes Road | Wallingford, CT 06492

For Sale/Lease

1,900 & 6,035 & 1,200 & 2,185 SF - Combined Contiguous Space of 11,320 SF - Floor Plan

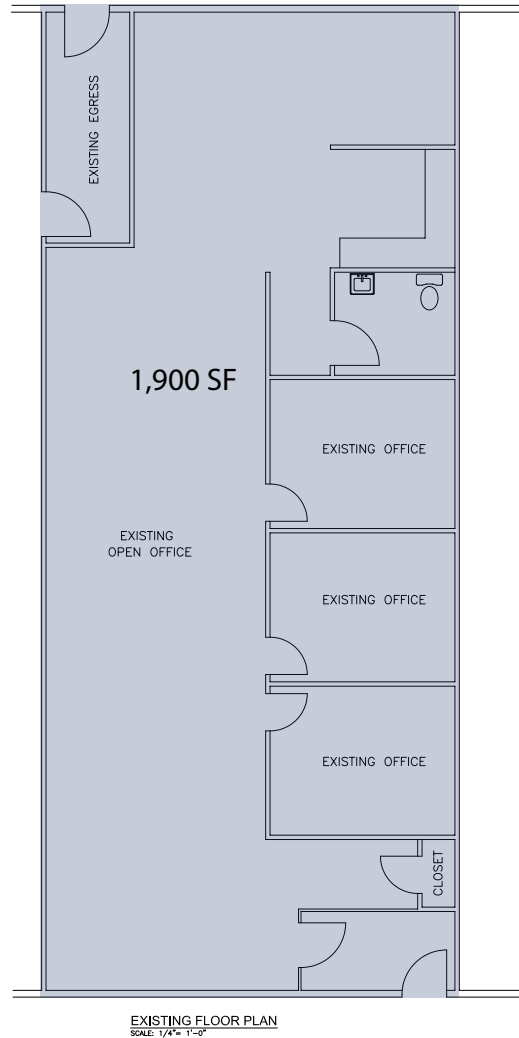


23,047 SF - Office/Medical Building Available

BroadPeak at Barnes Park | 97 Barnes Road | Wallingford, CT 06492

For Sale/Lease

1,900 SF - Existing Floor Plan

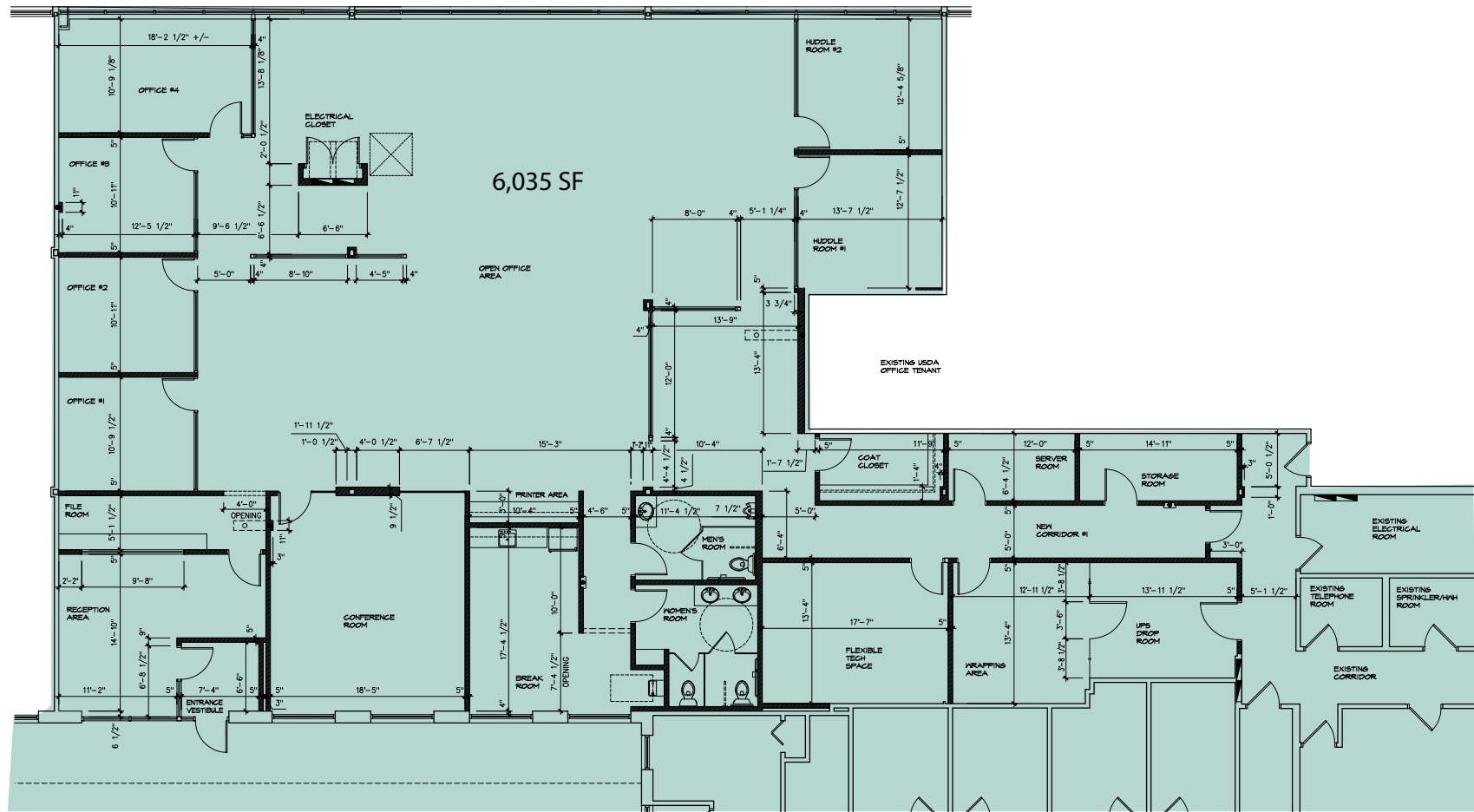


23,047 SF - Office/Medical Building Available

BroadPeak at Barnes Park | 97 Barnes Road | Wallingford, CT 06492

For Sale/ Lease

6,035 SF - Floor Plan

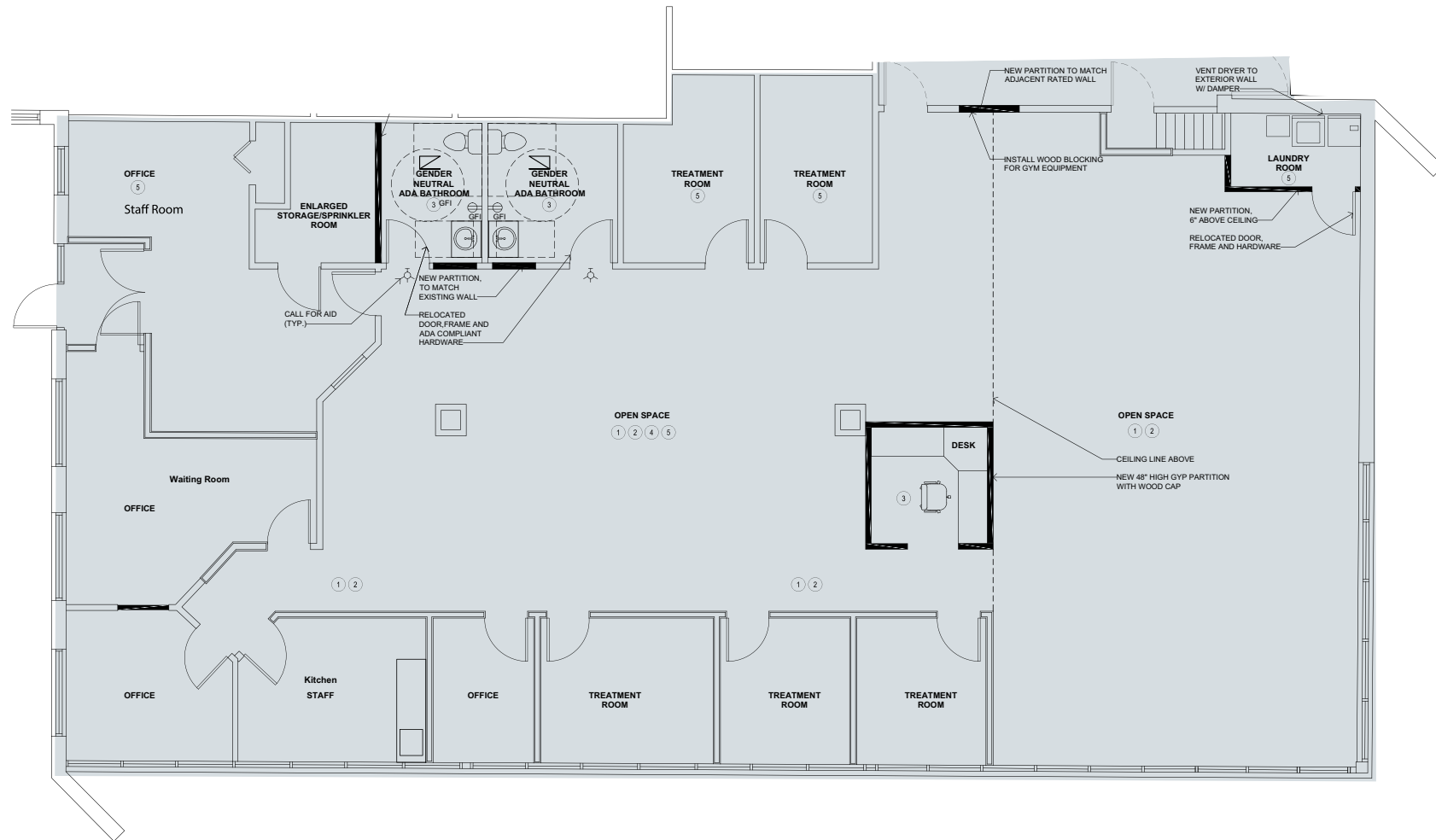


23,047 SF - Office/Medical Building Available

BroadPeak at Barnes Park | 97 Barnes Road | Wallingford, CT 06492

For Sale/Lease

3,385 SF (1,200 & 2,185 SF Combined) - Proposed Floor Plan

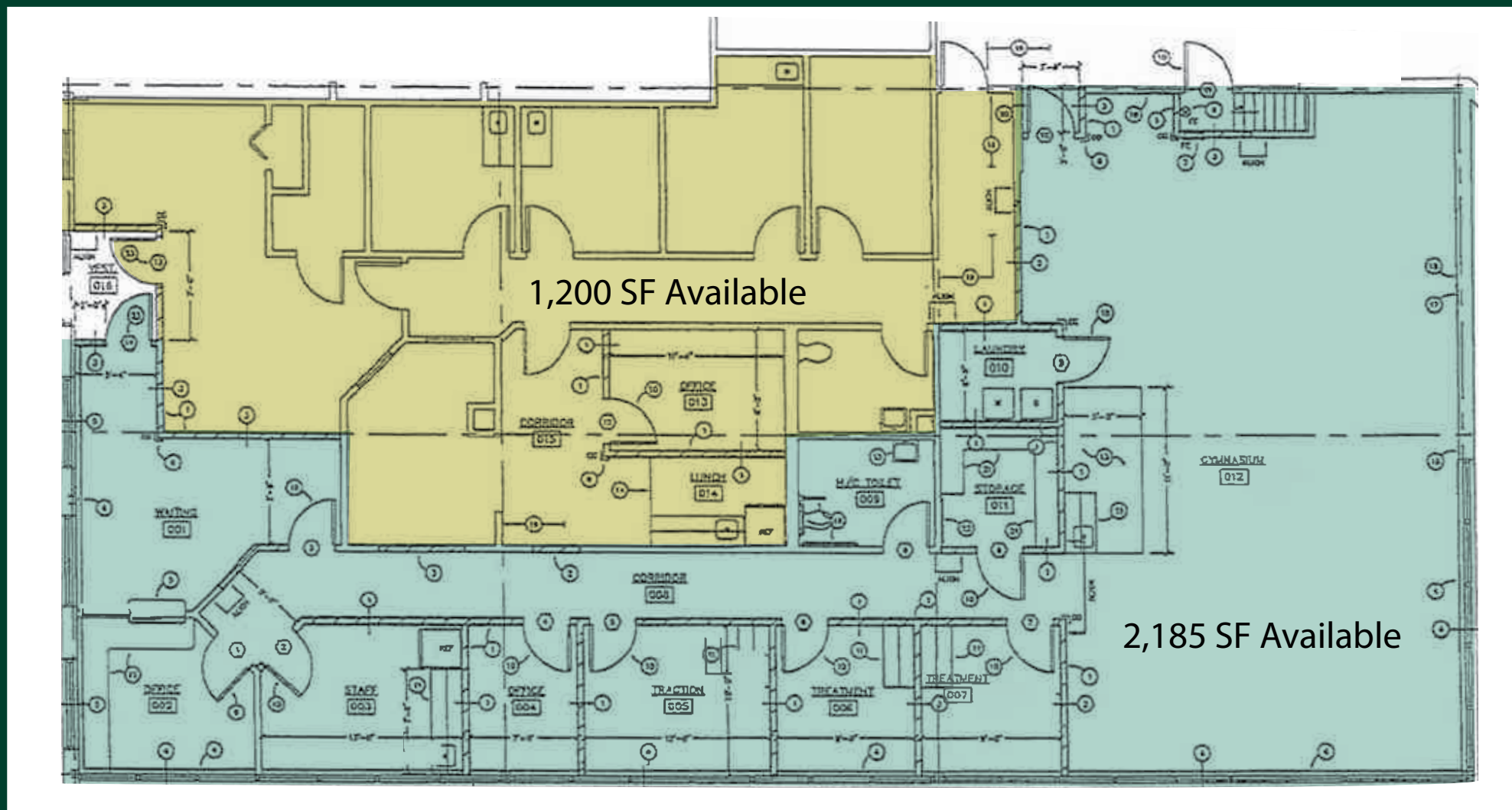


23,047 SF - Office/Medical Building Available

BroadPeak at Barnes Park | 97 Barnes Road | Wallingford, CT 06492

For Sale/Lease

1,200 SF & 2,185 SF - Floor Plan



© 2025 CBRE, Inc. All rights reserved. This information has been obtained from sources believed reliable, but has not been verified for accuracy or completeness. You should conduct a careful, independent investigation of the property and verify all information. Any reliance on this information is solely at your own risk. CBRE and the CBRE logo are service marks of CBRE, Inc. All other marks displayed on this document are the property of their respective owners, and the use of such logos does not imply any affiliation with or endorsement of CBRE. Photos herein are the property of their respective owners. Use of these images without the express written consent of the owner is prohibited.