



For Lease

Rensselaer Tech Park

350 Jordan Road, Troy, NY 12180

Space Overview

- Space can be subdivided
- Approximately 120 parking spaces
- Space renovated in 2019 and lightly used
- Tons of natural light
- Picturesque park setting
- Demountable glass walls for offices and meeting rooms throughout
- Men's and women's showers
- Dedicated fitness room with rubber floor
- Shared loading dock

Tech Park Highlights

- Daycare
- [Pat's Barn Event and Conference Center](#)
- Urgent Care
- Other Tenants:
 - Rensselaer Polytechnic Institute
 - Hudson Valley Community College
 - Regeneron Pharmaceuticals
 - GE Healthcare
 - Metlife
 - Community Care Physicians

Asking Rent:

\$16.75/SF

+ utilities

Available Space:

31,971 SF

Contact



Todd Stevens

518.424.7717 mobile
tstevens@cresa.com



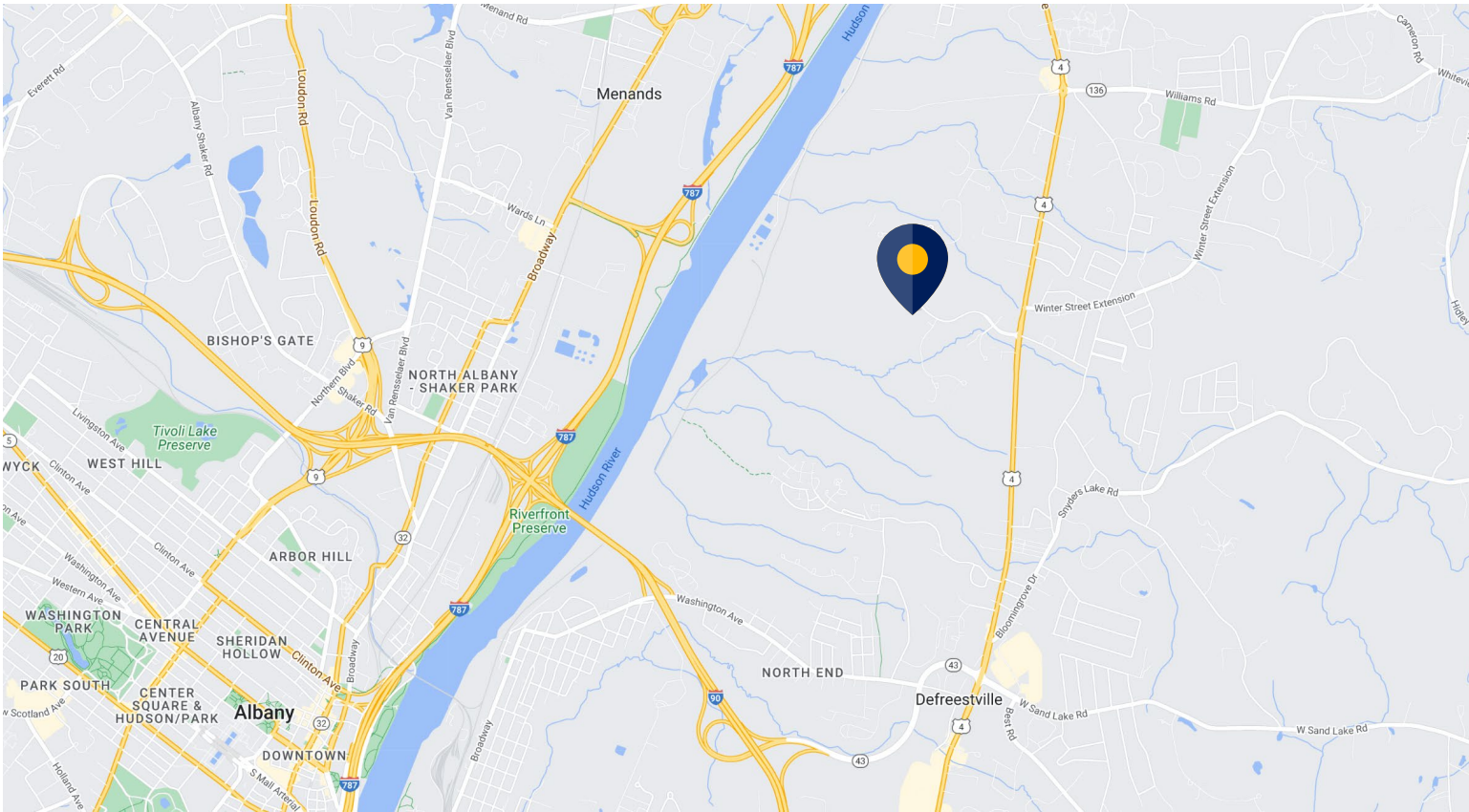
Zac Conley

518.859.2990 mobile
zconley@cresa.com

MLS #202401103

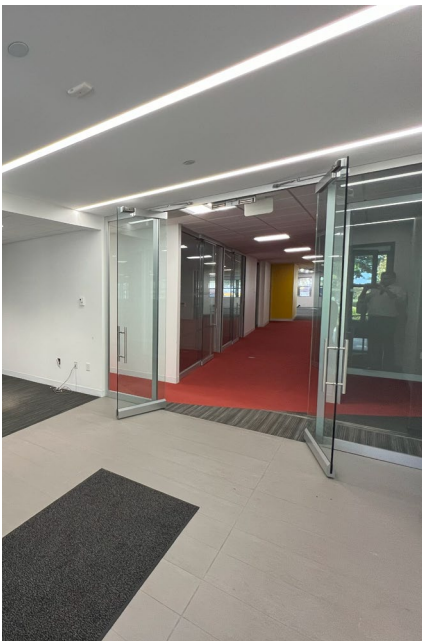
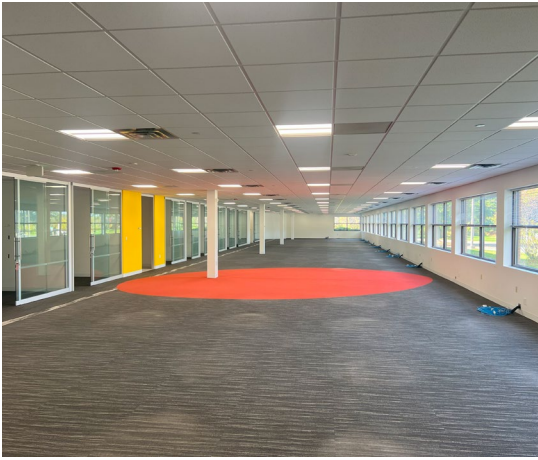
Even though obtained from sources deemed reliable, no warranty or representation, express or implied, is made as to the accuracy of the information herein, and it is subject to errors, omissions, change of price, rental or other conditions, withdrawal without notice, and to any special listing conditions imposed by our principals.

Site Location



Floor Plan







Beyond space.

Contact

For more information, please contact:

Todd Stevens

518.424.7717 mobile

518.380.5002 direct

tstevens@cresa.com

Zac Conley

518.859.2990 mobile

518.380.5006 direct

zconley@cresa.com

cresa.com/albany-ny

Even though obtained from sources deemed reliable, no warranty or representation, express or implied, is made as to the accuracy of the information herein, and it is subject to errors, omissions, change of price, rental or other conditions, withdrawal without notice, and to any special listing conditions imposed by our principals.

