

Walmart Supercenter Outparcel

Available For Sale or Lease

1098 North Military Trail, West Palm Beach, FL

PROPERTY DETAILS

Location: Just north of Belvedere Road on the east side of Military Trail at the entrance to the Walmart Supercenter.

GLA: 1,900
Potential GLA: 6,000 SF
Site Size: 0.68Acres
Dimensions: 168' x 177'
Frontage: 100 feet
Zoning: MPUD
Land Use: Commercial
Utilities: All Available
Traffic: 72,942 VPD (combined)

HIGHLIGHTS

Walmart Supercenter Anchor

Outstanding Location

On Military Trail, 1 mile south of Okeechobee Boulevard & 1 block north of Belvedere Road

Curb Appeal

Excellent Frontage (100 feet on Military Trail), at the main entrance to the Walmart Supercenter

Exceptional Visibility

72,942 vehicles per day

Prominent Retailers Nearby

Walmart, Walgreens, McDonald's, Wendy's, Sprint, 7-Eleven, Dunkin Donuts, KFC, Chili's, Boston Market, Buffalo Wild Wings, Pep Boys, AutoZone, Tires Plus and more



Property Contact:

Robert J. Sullivan, CCIM

Phone: 561-694-5290 Ext. 101
BobSullivan@rjsrealty.com



RJS Realty Group

11811 U.S. Highway One; St 101
North Palm Beach, FL

www.rjsrealty.com

Walmart Supercenter Outparcel Available For Sale or Lease

1098 North Military Trail, West Palm Beach, FL



Directions: Take I-95 to Belvedere Road (exit 69A); head west for 2.8 miles to Military trail and then turn right (north) and go 1 block. The Property is located on the right (east) side of Military Trail between the two available entrances to the Walmart Supercenter. ([Map](#))

TRANSPORTATION:

- Bus station (1228) – On site
- PBIA is approximately – 1 mile south
- Turnpike – 2.8 miles northwest
- Interstate 95 - 2.8 miles east
- West Palm Beach Commuter Rail (Tri-County) – 4.5 miles northeast

POINTS OF INTEREST:

- Palm Beach Outlet Mall – 3.1 miles northeast
- CityPlace – 4.4 miles northeast
- Downtown West Palm Beach – 5.4 miles northeast
- Perfect Vodka Amphitheater – 5.5 miles west

	3 mile	5 miles	10 miles
Population	111,485	294,297	727,029
Pop Growth 2018-2023	6.73%	7.09%	7.11%
Daytime Employment	62,761	169,171	335,458
Average Household Income	\$52,974	\$60,932	\$74,484
Total Households	41,752	115,646	281,690
Average HH Size	2.60	2.50	2.50
HH Growth 2015-2020	6.44%	6.84%	6.90%
Median Home Value	\$139,527	\$170,567	\$229,343

Property Contact:

Robert J. Sullivan, CCIM
 Phone: 561-694-5290 Ext. 101
 BobSullivan@rjsrealty.com

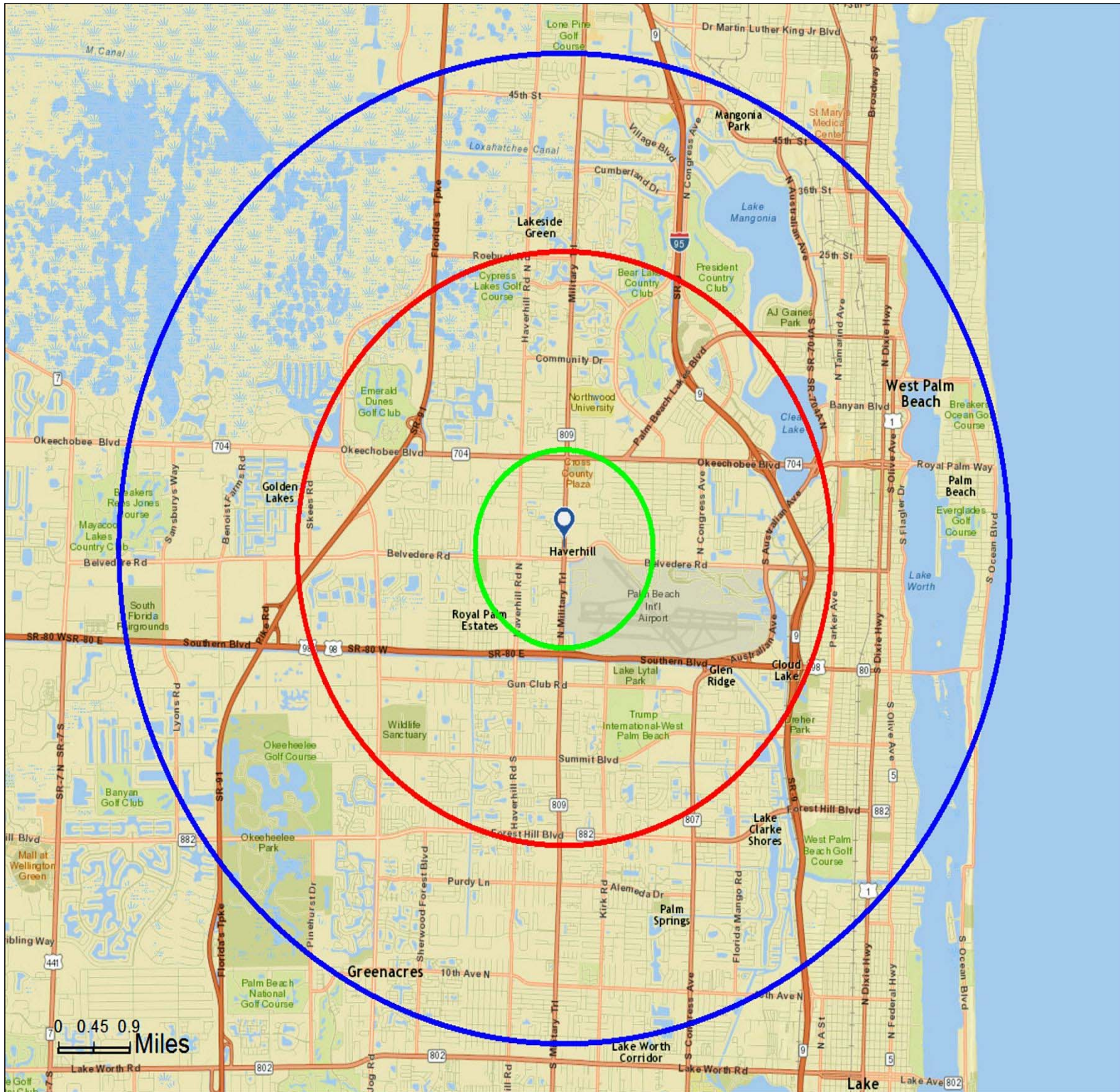


www.rjsrealty.com

RJS Realty Group
 11811 U.S. Highway One; St 101
 North Palm Beach, FL

Walmart Supercenter Outparcel Available For Sale or Lease

1098 North Military Trail, West Palm Beach, FL



Property Contact:

Robert J. Sullivan, CCIM

Phone: 561-694-5290 Ext. 101

BobSullivan@rjsrealty.com



www.rjsrealty.com

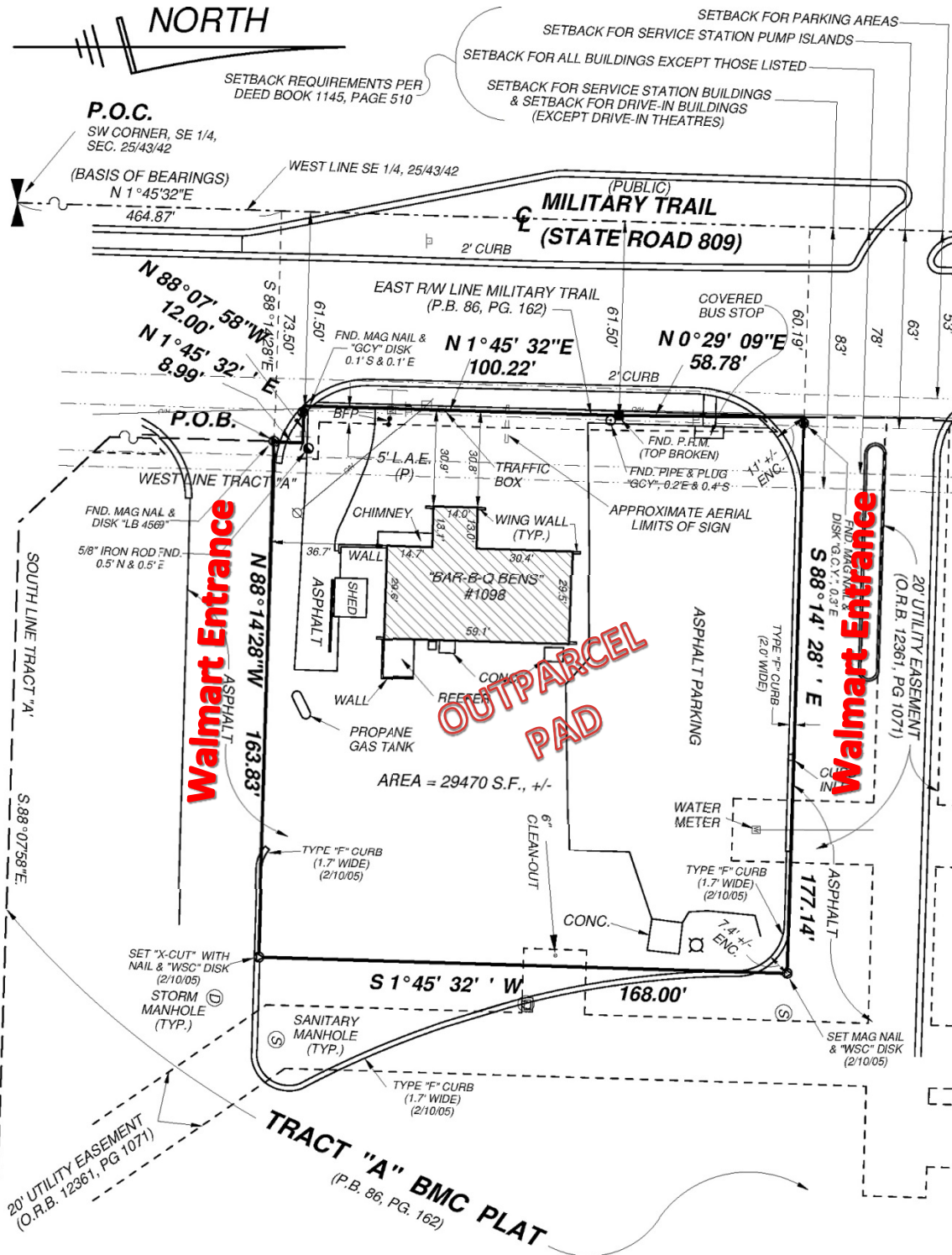
RJS Realty Group

11811 U.S. Highway One; St 101

North Palm Beach, FL

Walmart Supercenter Outparcel Available For Sale or Lease

1098 North Military Trail, West Palm Beach, FL



Property Contact:

Robert J. Sullivan, CCIM
 Phone: 561-694-5290 Ext. 101
 BobSullivan@rjsrealty.com



www.rjsrealty.com

RJS Realty Group
 11811 U.S. Highway One; St 101
 North Palm Beach, FL