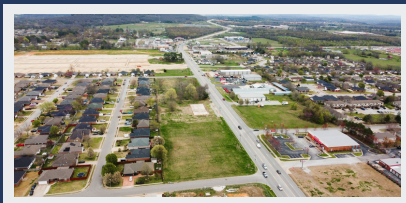
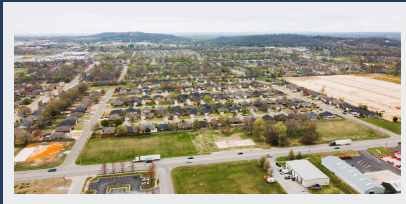
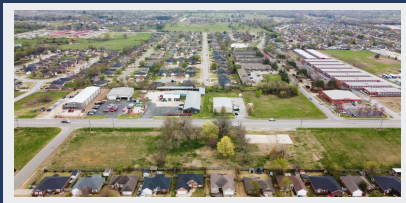




COMMERCIAL LAND FOR SALE



2700 & 2744 E ROBINSON AVE, SPRINGDALE | AR



Palmer Hays
Industrial & Land Specialist
479.466.8499
palmer@bennettcre.com



Corey Fuhrman
Broker
479.504.2034
corey@bennettcre.com

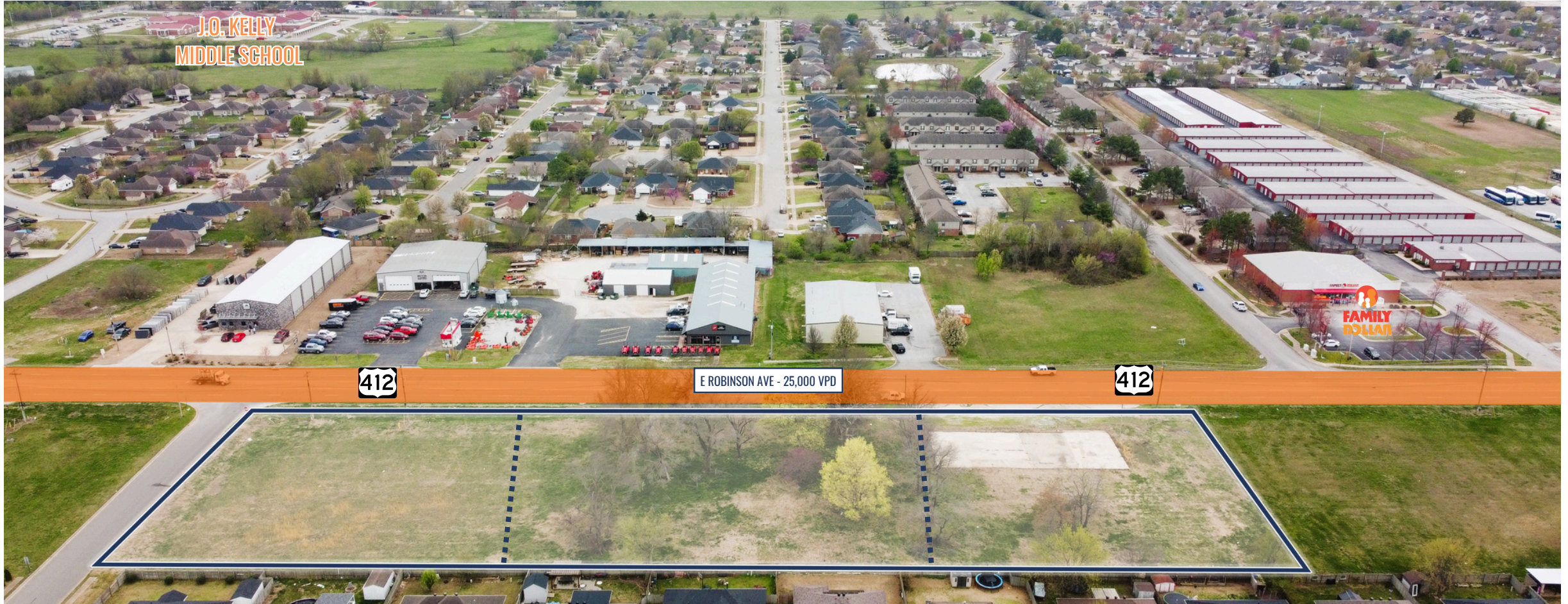
bennettcre.com



Palmer Hays
Industrial & Land Specialist
479.466.8499
palmer@bennettcre.com



Corey Fuhrman
Broker
479.504.2034
corey@bennettcre.com



SITE HIGHLIGHTS

- + 25,000 VPD on Hwy 412
- + Ideal for retail or small bay industrial users
- + Lots are subdividable (three 1-acre parcels)
- + C-2 Zoning

PROPERTY DETAILS

Address: 2700 & 2744 E Robinson Ave, Springdale

Available: ±1.00 - 2.97 Acres

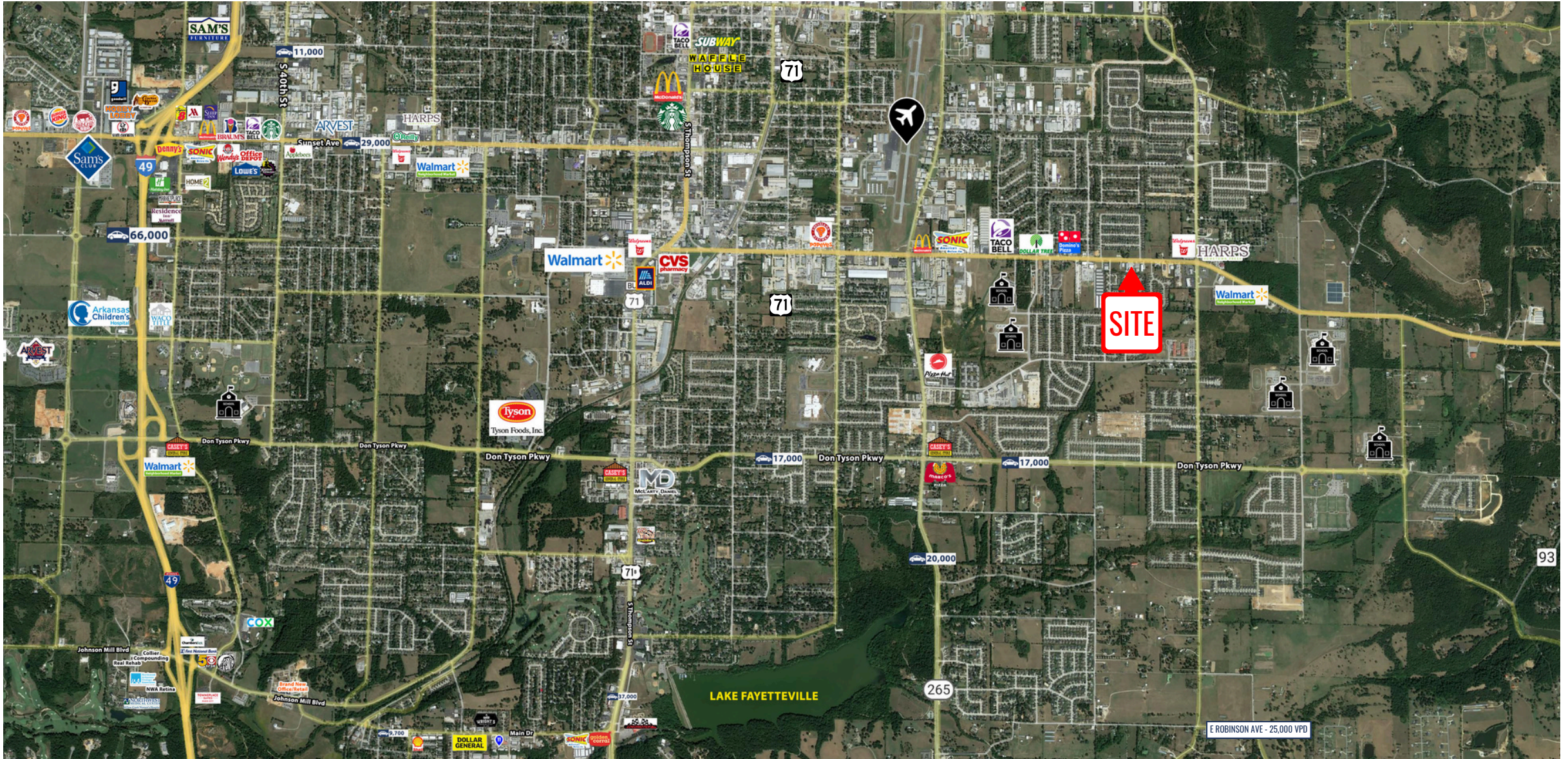
ASKING PRICE: \$1,250,000 (\$9.66/SF)

Palmer Hays
Industrial & Land Specialist
479.466.8499
palmer@bennettcre.com



Corey Fuhrman
Broker
479.504.2034
corey@bennettcre.com

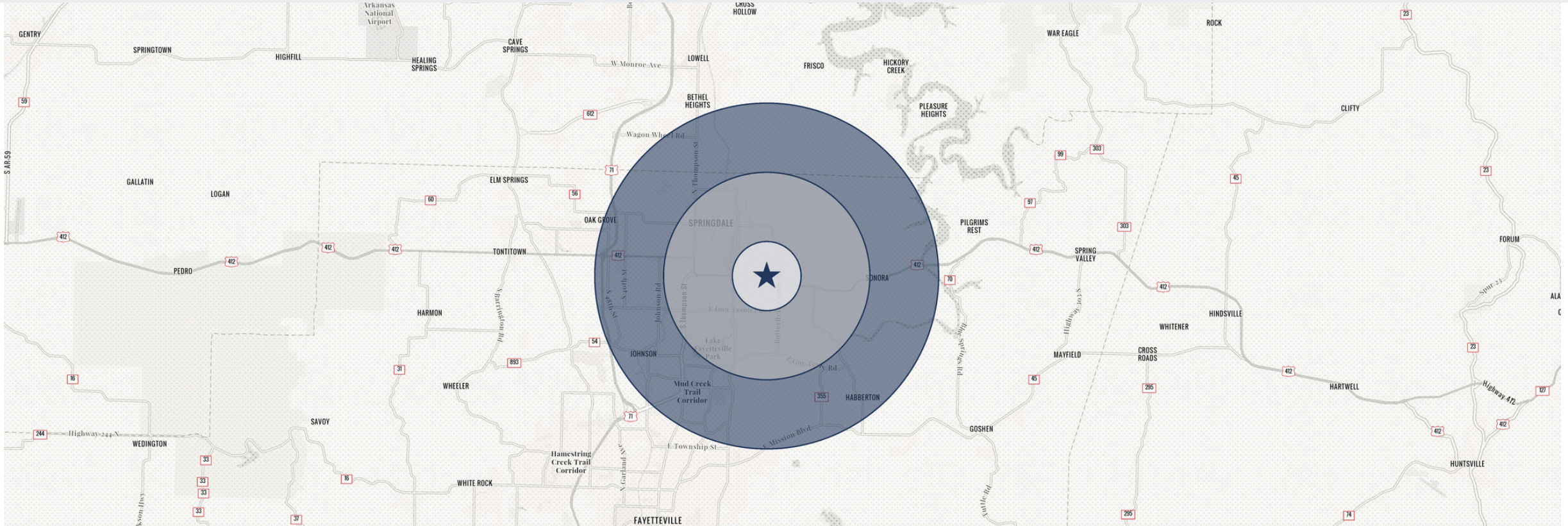
AERIAL VIEW



Palmer Hays
 Industrial & Land Specialist
 479.466.8499
 palmer@bennettcre.com



Corey Fuhrman
 Broker
 479.504.2034
 corey@bennettcre.com



DEMOGRAPHICS

	1 MILE	3 MILES	5 MILES
Total Population	13,247	48,893	103,535
Median Age	29	30	32
Total Households	4,014	15,316	35,553
Average HH Income	\$74,577	\$72,303	\$85,094
Total Businesses	185	1,736	3,748
Total Employees	2,141	22,023	55,006