



# Demographic and Income Comparison Profile

101 Harbor Creek Pkwy, Holly Springs, GA  
 1901-1973 Holly Springs Pkwy, Canton, Georgia, 30115  
 Rings: 1, 3, 5 mile radii

Prepared by Esri  
 Latitude: 34.18229  
 Longitude: -84.50344

	1 mile	3 miles	5 miles
<b>Census 2010 Summary</b>			
Population	5,602	36,242	83,157
Households	2,065	12,378	28,745
Families	1,479	9,617	22,118
Average Household Size	2.71	2.88	2.86
Owner Occupied Housing Units	1,501	9,687	22,244
Renter Occupied Housing Units	566	2,688	6,497
Median Age	31.2	33.9	34.9
<b>Census 2020 Summary</b>			
Population	6,391	44,051	101,632
Households	2,366	15,064	35,596
Average Household Size	2.70	2.89	2.83
<b>2022 Summary</b>			
Population	6,504	45,756	105,327
Households	2,432	15,705	37,005
Families	1,684	11,895	27,864
Average Household Size	2.67	2.88	2.82
Owner Occupied Housing Units	1,387	10,748	26,715
Renter Occupied Housing Units	1,046	4,957	10,290
Median Age	35.1	36.0	36.8
Median Household Income	\$76,785	\$89,043	\$94,615
Average Household Income	\$87,584	\$108,084	\$118,132
<b>2027 Summary</b>			
Population	6,958	48,850	111,341
Households	2,597	16,808	39,210
Families	1,794	12,686	29,442
Average Household Size	2.68	2.87	2.81
Owner Occupied Housing Units	1,506	11,572	28,547
Renter Occupied Housing Units	1,091	5,235	10,663
Median Age	34.7	36.2	37.1
Median Household Income	\$87,586	\$103,626	\$107,024
Average Household Income	\$102,079	\$127,571	\$136,975
<b>Trends: 2022-2027 Annual Rate</b>			
Population	1.36%	1.32%	1.12%
Households	1.32%	1.37%	1.16%
Families	1.27%	1.30%	1.11%
Owner Households	1.66%	1.49%	1.34%
Median Household Income	2.67%	3.08%	2.50%

Source: Esri forecasts for 2022 and 2027. U.S. Census Bureau 2010 decennial Census data converted by Esri into 2020 geography.



# Demographic and Income Comparison Profile

101 Harbor Creek Pkwy, Holly Springs, GA  
 1901-1973 Holly Springs Pkwy, Canton, Georgia, 30115  
 Rings: 1, 3, 5 mile radii

Prepared by Esri  
 Latitude: 34.18229  
 Longitude: -84.50344

2022 Households by Income	1 mile		3 miles		5 miles	
	Number	Percent	Number	Percent	Number	Percent
<\$15,000	129	5.3%	860	5.5%	1,817	4.9%
\$15,000 - \$24,999	124	5.1%	977	6.2%	2,245	6.1%
\$25,000 - \$34,999	173	7.1%	769	4.9%	2,035	5.5%
\$35,000 - \$49,999	155	6.4%	744	4.7%	1,862	5.0%
\$50,000 - \$74,999	597	24.5%	2,994	19.1%	6,396	17.3%
\$75,000 - \$99,999	389	16.0%	2,389	15.2%	5,018	13.6%
\$100,000 - \$149,999	614	25.2%	4,040	25.7%	9,050	24.5%
\$150,000 - \$199,999	226	9.3%	1,766	11.2%	4,601	12.4%
\$200,000+	24	1.0%	1,167	7.4%	3,981	10.8%
Median Household Income	\$76,785		\$89,043		\$94,615	
Average Household Income	\$87,584		\$108,084		\$118,132	
Per Capita Income	\$32,978		\$37,277		\$41,390	

2027 Households by Income	1 mile		3 miles		5 miles	
	Number	Percent	Number	Percent	Number	Percent
<\$15,000	89	3.4%	626	3.7%	1,322	3.4%
\$15,000 - \$24,999	82	3.2%	715	4.3%	1,680	4.3%
\$25,000 - \$34,999	110	4.2%	561	3.3%	1,591	4.1%
\$35,000 - \$49,999	190	7.3%	778	4.6%	1,577	4.0%
\$50,000 - \$74,999	646	24.9%	3,024	18.0%	6,393	16.3%
\$75,000 - \$99,999	318	12.2%	2,137	12.7%	4,824	12.3%
\$100,000 - \$149,999	728	28.0%	4,678	27.8%	10,316	26.3%
\$150,000 - \$199,999	399	15.4%	2,601	15.5%	6,359	16.2%
\$200,000+	34	1.3%	1,687	10.0%	5,147	13.1%
Median Household Income	\$87,586		\$103,626		\$107,024	
Average Household Income	\$102,079		\$127,571		\$136,975	
Per Capita Income	\$38,384		\$44,102		\$48,106	

**Data Note:** Income is expressed in current dollars.

**Source:** Esri forecasts for 2022 and 2027. U.S. Census Bureau 2010 decennial Census data converted by Esri into 2020 geography.



# Demographic and Income Comparison Profile

101 Harbor Creek Pkwy, Holly Springs, GA  
 1901-1973 Holly Springs Pkwy, Canton, Georgia, 30115  
 Rings: 1, 3, 5 mile radii

Prepared by Esri  
 Latitude: 34.18229  
 Longitude: -84.50344

2010 Population by Age	1 mile		3 miles		5 miles	
	Number	Percent	Number	Percent	Number	Percent
Age 0 - 4	576	10.3%	3,081	8.5%	6,538	7.9%
Age 5 - 9	496	8.9%	3,191	8.8%	7,301	8.8%
Age 10 - 14	358	6.4%	2,806	7.7%	6,810	8.2%
Age 15 - 19	315	5.6%	2,286	6.3%	5,612	6.7%
Age 20 - 24	314	5.6%	1,975	5.4%	4,301	5.2%
Age 25 - 34	1,216	21.7%	5,404	14.9%	11,076	13.3%
Age 35 - 44	943	16.8%	6,341	17.5%	14,160	17.0%
Age 45 - 54	663	11.8%	4,987	13.8%	12,151	14.6%
Age 55 - 64	391	7.0%	3,352	9.2%	8,163	9.8%
Age 65 - 74	208	3.7%	1,818	5.0%	4,365	5.2%
Age 75 - 84	89	1.6%	737	2.0%	1,926	2.3%
Age 85+	34	0.6%	264	0.7%	754	0.9%

2022 Population by Age	1 mile		3 miles		5 miles	
	Number	Percent	Number	Percent	Number	Percent
Age 0 - 4	511	7.9%	3,348	7.3%	7,138	6.8%
Age 5 - 9	545	8.4%	3,789	8.3%	8,180	7.8%
Age 10 - 14	530	8.1%	3,700	8.1%	8,345	7.9%
Age 15 - 19	396	6.1%	2,841	6.2%	6,987	6.6%
Age 20 - 24	302	4.6%	2,123	4.6%	5,299	5.0%
Age 25 - 34	953	14.7%	6,264	13.7%	13,801	13.1%
Age 35 - 44	1,149	17.7%	7,705	16.8%	15,945	15.1%
Age 45 - 54	833	12.8%	6,036	13.2%	14,480	13.7%
Age 55 - 64	635	9.8%	4,831	10.6%	12,189	11.6%
Age 65 - 74	414	6.4%	3,260	7.1%	8,234	7.8%
Age 75 - 84	191	2.9%	1,478	3.2%	3,685	3.5%
Age 85+	45	0.7%	380	0.8%	1,044	1.0%

2027 Population by Age	1 mile		3 miles		5 miles	
	Number	Percent	Number	Percent	Number	Percent
Age 0 - 4	551	7.9%	3,613	7.4%	7,651	6.9%
Age 5 - 9	578	8.3%	3,955	8.1%	8,424	7.6%
Age 10 - 14	591	8.5%	3,950	8.1%	8,566	7.7%
Age 15 - 19	491	7.1%	3,215	6.6%	7,237	6.5%
Age 20 - 24	356	5.1%	2,275	4.7%	5,459	4.9%
Age 25 - 34	942	13.5%	6,393	13.1%	14,396	12.9%
Age 35 - 44	1,218	17.5%	8,417	17.2%	17,605	15.8%
Age 45 - 54	906	13.0%	6,270	12.8%	14,233	12.8%
Age 55 - 64	620	8.9%	4,863	10.0%	12,442	11.2%
Age 65 - 74	429	6.2%	3,542	7.3%	9,185	8.2%
Age 75 - 84	221	3.2%	1,883	3.9%	4,869	4.4%
Age 85+	55	0.8%	475	1.0%	1,272	1.1%

Source: Esri forecasts for 2022 and 2027. U.S. Census Bureau 2010 decennial Census data converted by Esri into 2020 geography.



# Demographic and Income Comparison Profile

101 Harbor Creek Pkwy, Holly Springs, GA  
 1901-1973 Holly Springs Pkwy, Canton, Georgia, 30115  
 Rings: 1, 3, 5 mile radii

Prepared by Esri  
 Latitude: 34.18229  
 Longitude: -84.50344

2010 Race and Ethnicity	1 mile		3 miles		5 miles	
	Number	Percent	Number	Percent	Number	Percent
White Alone	4,496	80.3%	31,313	86.4%	71,594	86.1%
Black Alone	643	11.5%	2,196	6.1%	4,880	5.9%
American Indian Alone	11	0.2%	119	0.3%	335	0.4%
Asian Alone	127	2.3%	568	1.6%	1,233	1.5%
Pacific Islander Alone	0	0.0%	26	0.1%	71	0.1%
Some Other Race Alone	169	3.0%	1,259	3.5%	3,308	4.0%
Two or More Races	155	2.8%	761	2.1%	1,736	2.1%
Hispanic Origin (Any Race)	574	10.2%	3,632	10.0%	8,592	10.3%

2020 Race and Ethnicity	1 mile		3 miles		5 miles	
	Number	Percent	Number	Percent	Number	Percent
White Alone	4,591	71.8%	33,207	75.4%	77,026	75.8%
Black Alone	651	10.2%	2,770	6.3%	6,686	6.6%
American Indian Alone	33	0.5%	357	0.8%	674	0.7%
Asian Alone	109	1.7%	706	1.6%	1,746	1.7%
Pacific Islander Alone	1	0.0%	23	0.1%	50	0.0%
Some Other Race Alone	344	5.4%	2,727	6.2%	5,920	5.8%
Two or More Races	662	10.4%	4,260	9.7%	9,529	9.4%
Hispanic Origin (Any Race)	916	14.3%	6,299	14.3%	14,270	14.0%

2022 Race and Ethnicity	1 mile		3 miles		5 miles	
	Number	Percent	Number	Percent	Number	Percent
White Alone	4,660	71.6%	34,342	75.1%	79,584	75.6%
Black Alone	632	9.7%	2,764	6.0%	6,634	6.3%
American Indian Alone	35	0.5%	384	0.8%	709	0.7%
Asian Alone	113	1.7%	748	1.6%	1,847	1.8%
Pacific Islander Alone	1	0.0%	23	0.1%	50	0.0%
Some Other Race Alone	354	5.4%	2,844	6.2%	6,146	5.8%
Two or More Races	710	10.9%	4,650	10.2%	10,356	9.8%
Hispanic Origin (Any Race)	948	14.6%	6,621	14.5%	14,868	14.1%

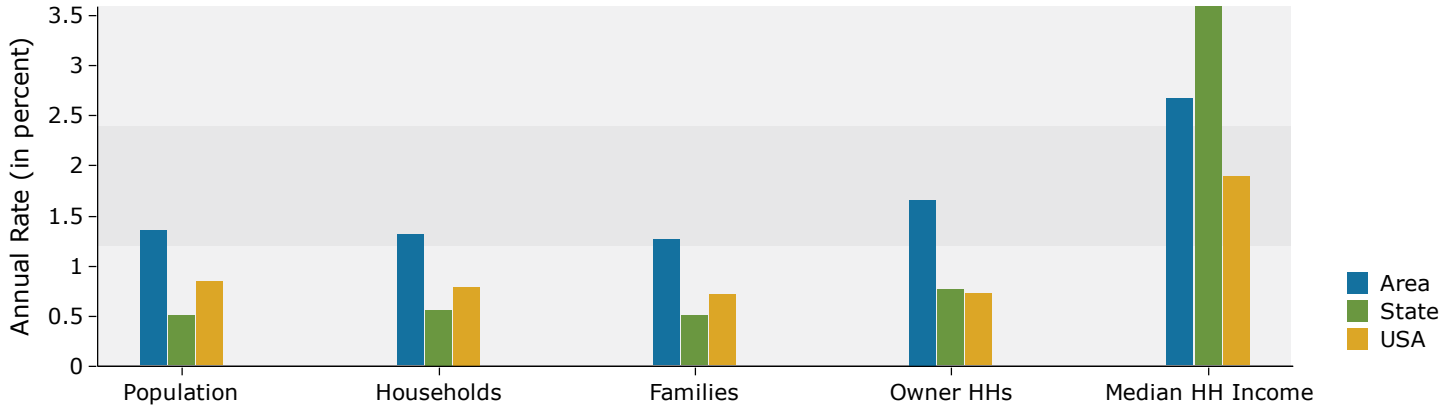
  

2027 Race and Ethnicity	1 mile		3 miles		5 miles	
	Number	Percent	Number	Percent	Number	Percent
White Alone	4,913	70.6%	36,123	73.9%	82,947	74.5%
Black Alone	646	9.3%	2,834	5.8%	6,720	6.0%
American Indian Alone	39	0.6%	426	0.9%	780	0.7%
Asian Alone	123	1.8%	823	1.7%	2,020	1.8%
Pacific Islander Alone	1	0.0%	23	0.0%	50	0.0%
Some Other Race Alone	401	5.8%	3,188	6.5%	6,835	6.1%
Two or More Races	835	12.0%	5,432	11.1%	11,989	10.8%
Hispanic Origin (Any Race)	1,052	15.1%	7,315	15.0%	16,167	14.5%

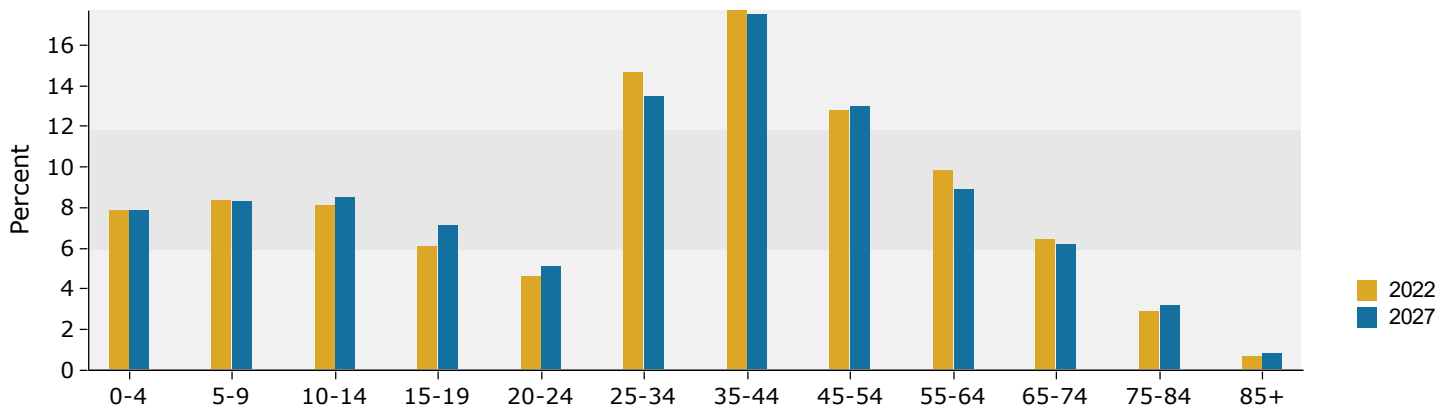
Source: Esri forecasts for 2022 and 2027. U.S. Census Bureau 2010 decennial Census data converted by Esri into 2020 geography.

## 1 mile

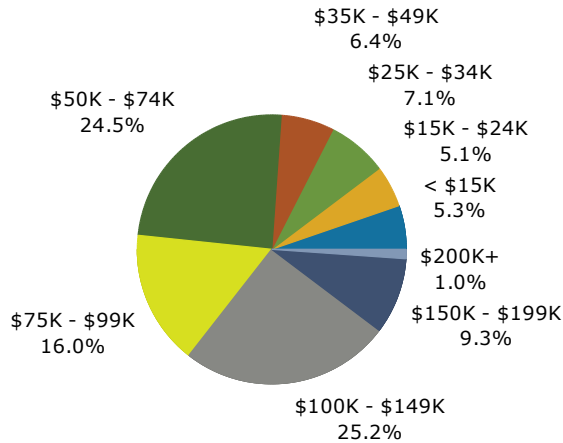
### Trends 2022-2027



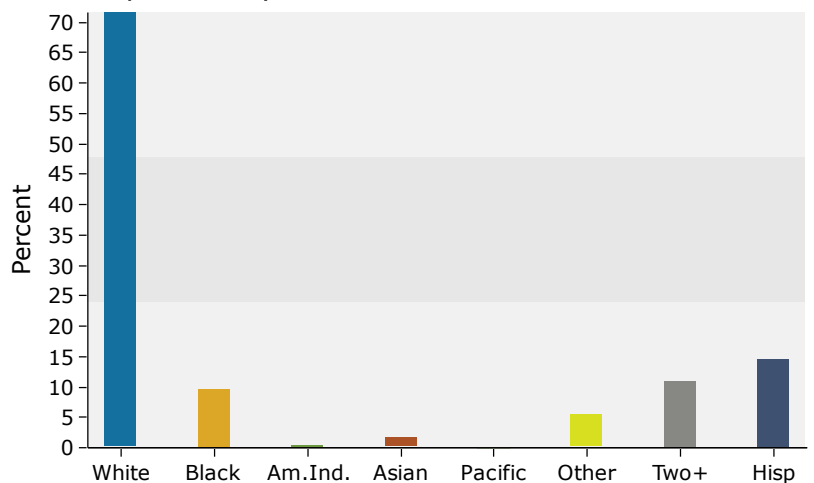
### Population by Age



### 2022 Household Income



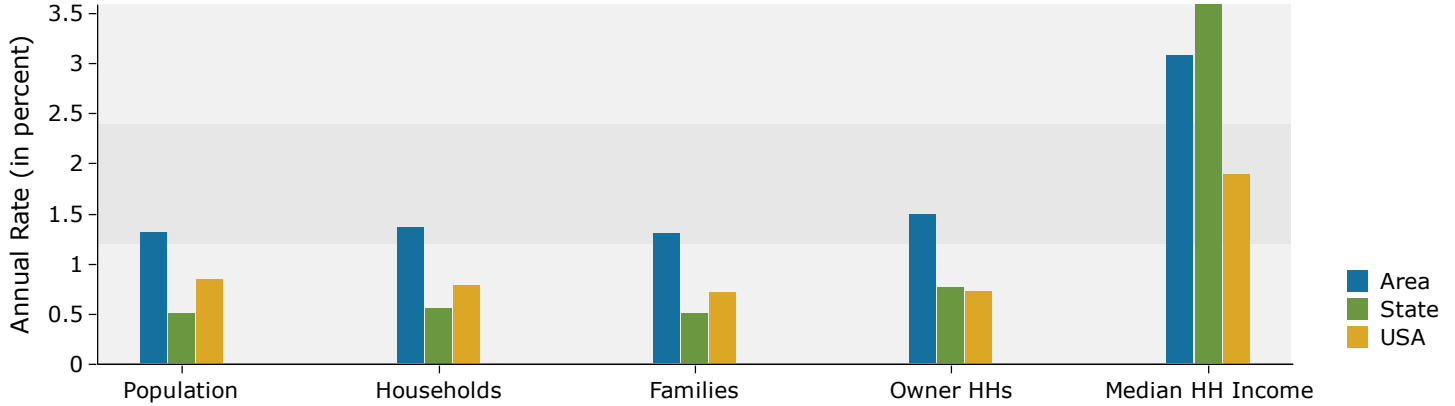
### 2022 Population by Race



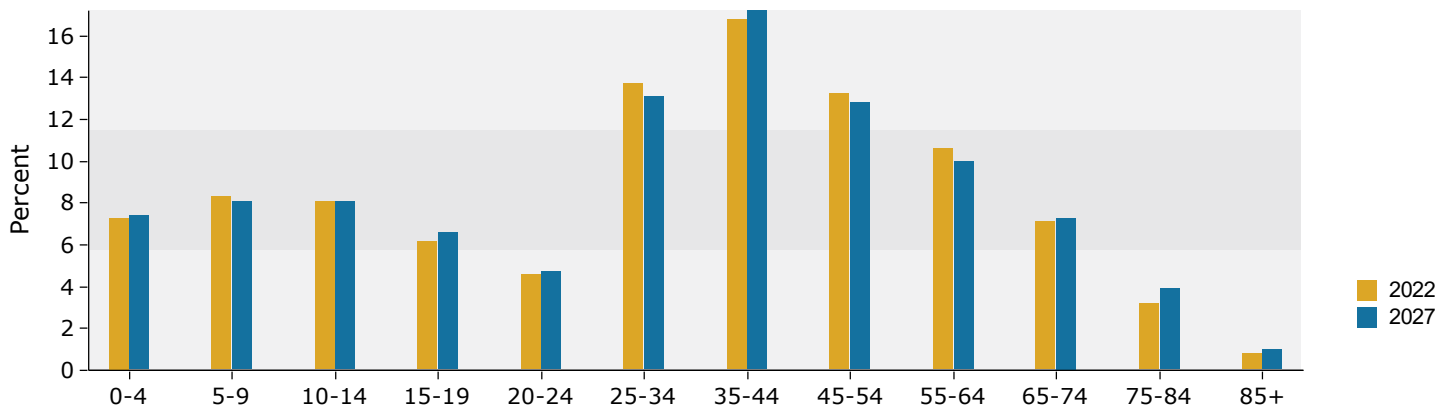
Source: Esri forecasts for 2022 and 2027. U.S. Census Bureau 2010 decennial Census data converted by Esri into 2020 geography.

## 3 miles

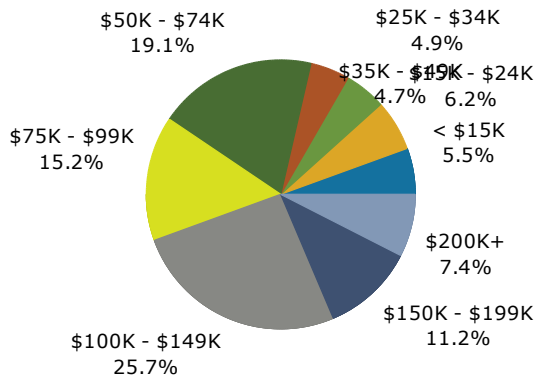
### Trends 2022-2027



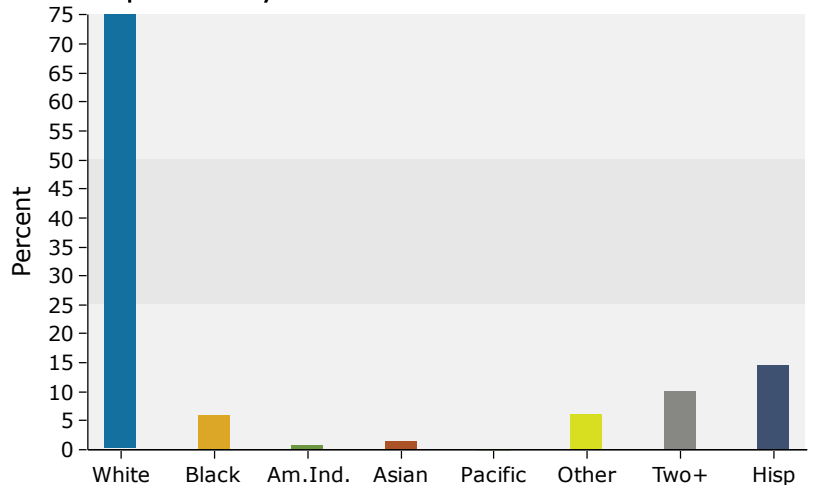
### Population by Age



### 2022 Household Income



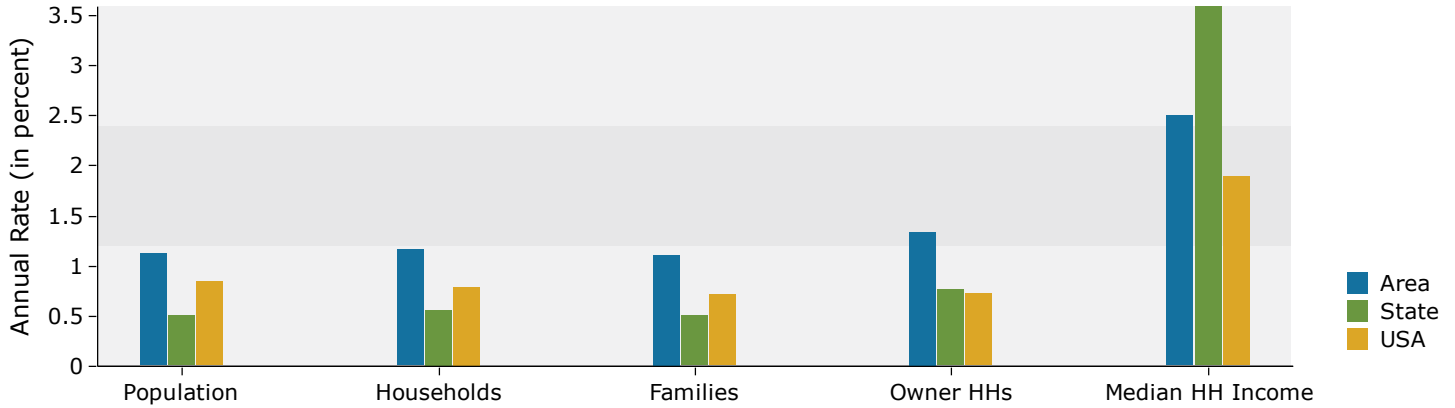
### 2022 Population by Race



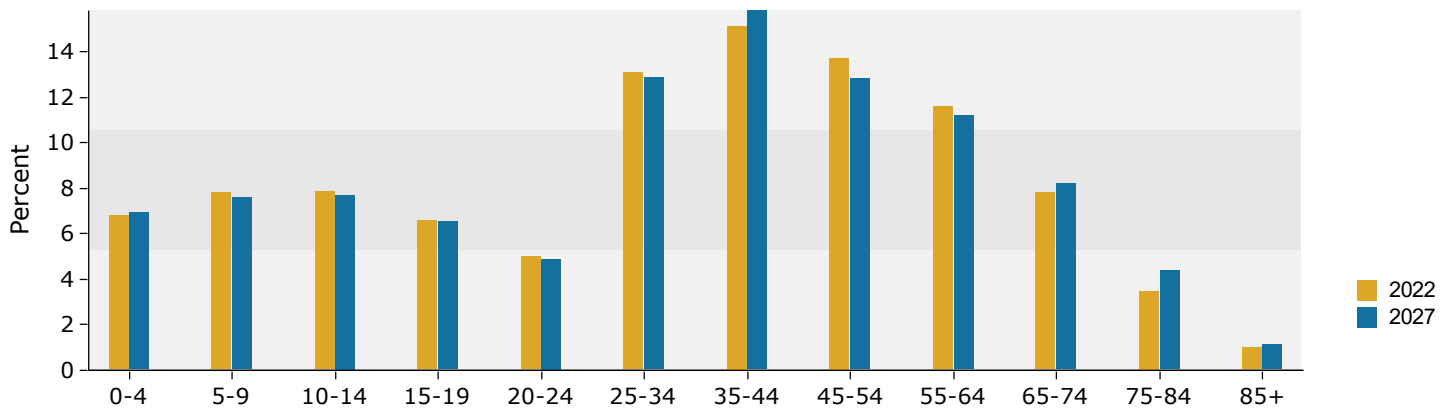
Source: Esri forecasts for 2022 and 2027. U.S. Census Bureau 2010 decennial Census data converted by Esri into 2020 geography.

## 5 miles

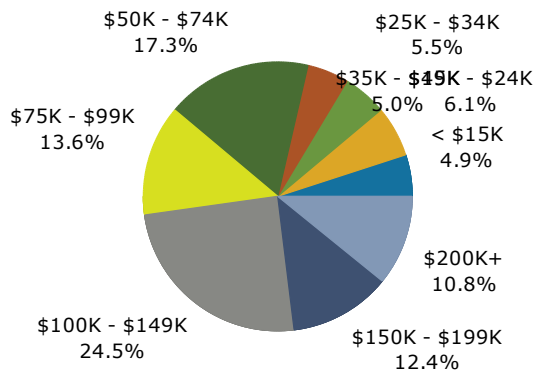
### Trends 2022-2027



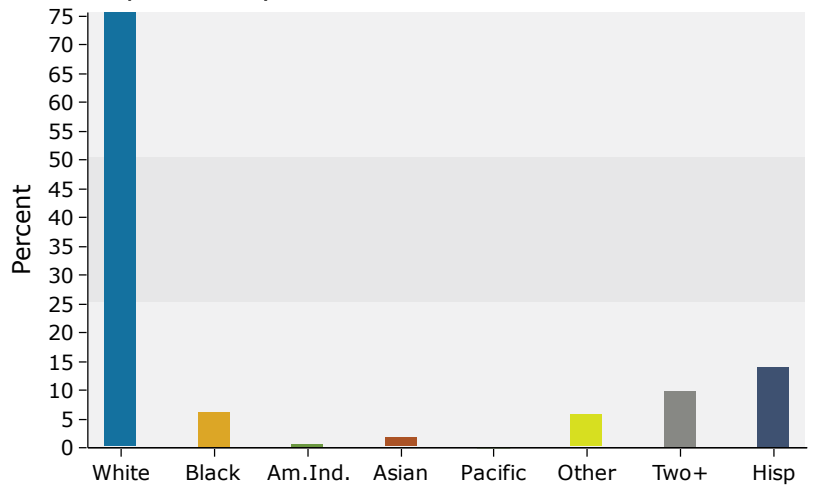
### Population by Age



### 2022 Household Income



### 2022 Population by Race



Source: Esri forecasts for 2022 and 2027. U.S. Census Bureau 2010 decennial Census data converted by Esri into 2020 geography.