

Heart of  
Downtown for  
Lease



## 245-247 Main Street

Nashua NH

### Property Features

- Total Available 8,330± SF
- Highly visible in Downtown Location
- 19,000 Vehicle Per Day
- Various allowable uses
- Easy Access to major roads

**Lease Rate: \$6.00 PSF NNN**

**(\$1.50 PSF w/ Nets added)**



Click [here](#) for more information.

**NAI** Norwood Group

The information contained herein has been given to us by the owner of the property or other sources we deem reliable, we have no reason to doubt its accuracy, but we do not guarantee it. All information should be verified prior to purchase or lease.

**Nick Ackerman**

603 657 1922 [nackerman@nainorwoodgroup.com](mailto:nackerman@nainorwoodgroup.com)

116 South River Road  
Bedford NH 03110  
+1 603 668 7000

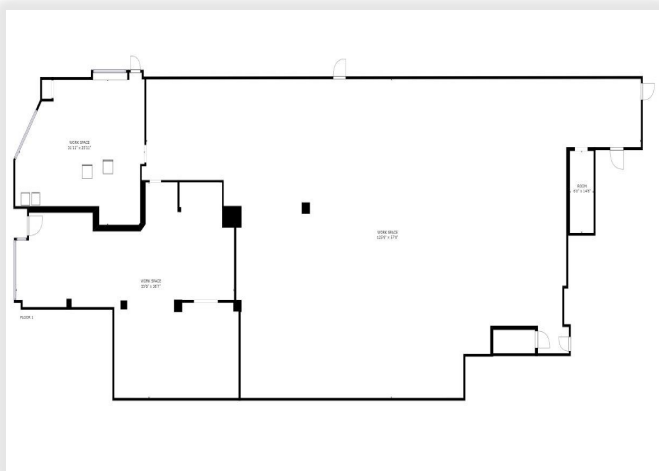
[nainorwoodgroup.com](http://nainorwoodgroup.com)



245-247 Main Street  
Nashua NH



Best deal in Nashua. Great location right in the heart of downtown Nashua. With 19,000 vehicles per day passing by this location, you'd be hard-pressed to find a retail space available in Nashua with more street activity. Space is currently vacant and available for immediate occupation. All interior walls have been opened up so the space is wide open from front to back. Past uses include restaurant, bar, club, retail store. Space is divisible.



**Lease Rate: \$6.00 PSF NNN**

**(\$1.50 PSF w/ Nets added)**

Click [here](#) for more information.

**Nick Ackerman**

603 657 1922 [nackerman@nainorwoodgroup.com](mailto:nackerman@nainorwoodgroup.com)

**NA**Norwood Group

116 South River Road  
Bedford NH 03110  
+1 603 668 7000  
[nainorwoodgroup.com](http://nainorwoodgroup.com)