

# 11100 LINPAGE PLACE

SAINT LOUIS, MO 63132



## Contact Information

Mike Hurley  
(314) 646-3300  
mhurley@cozadgroup.com



Cozad Commercial Real Estate  
MD Real Estate Advisors, LLC  
16 Sunnen Drive, Ste. 164  
St. Louis, Missouri 63143

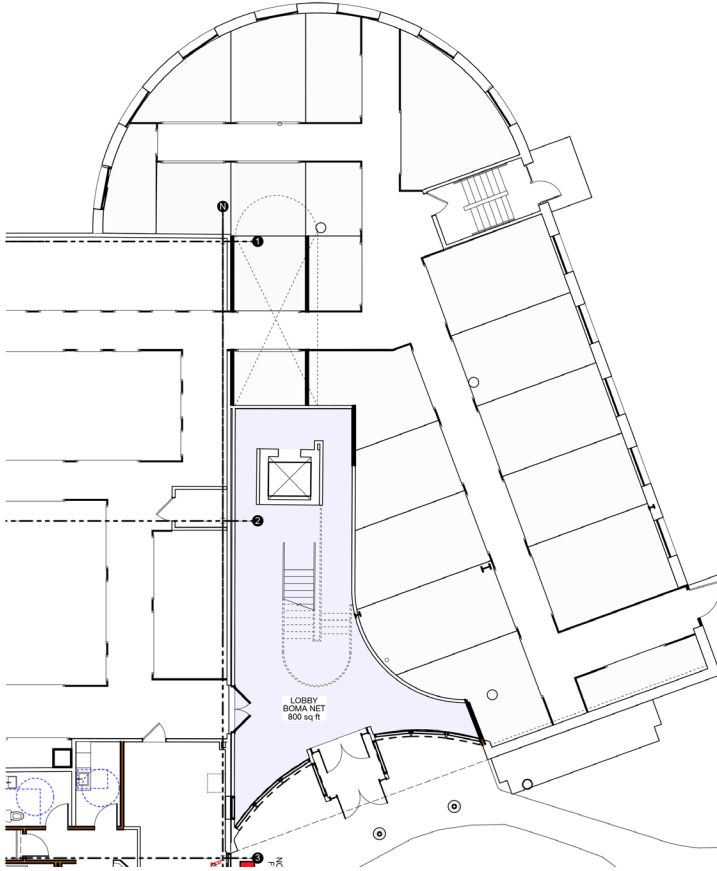
## PROPERTY HIGHLIGHTS

- ▶ 4,289 – 7,102 SF office space in move-in condition
- ▶ Contemporary office space with 3-story atrium lobby
- ▶ Parking: 3.8/1,000 with ability to expand if required
- ▶ Tenant space with open balconies overlooking all floors
- ▶ Elevator and stairwell available to access all floors
- ▶ Easily accessible via Page Avenue immediately East of Lindbergh Boulevard
- ▶ **Lease Rate: \$12.50/sf FS + janitorial**

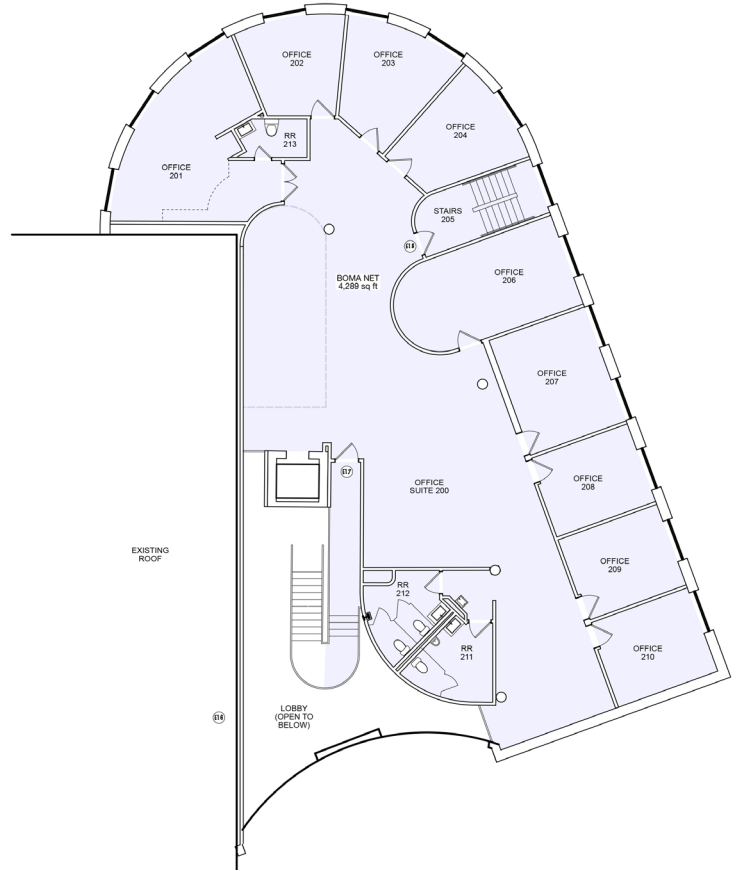
# 11100 LINPAGE PLACE

SAINT LOUIS, MO 63132

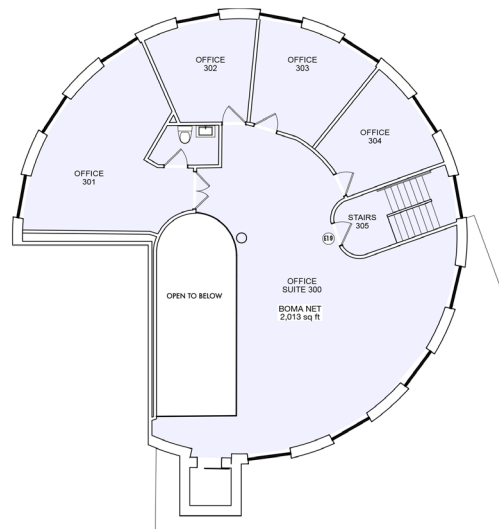
## 1st Floor



## 2nd Floor



## 3rd Floor



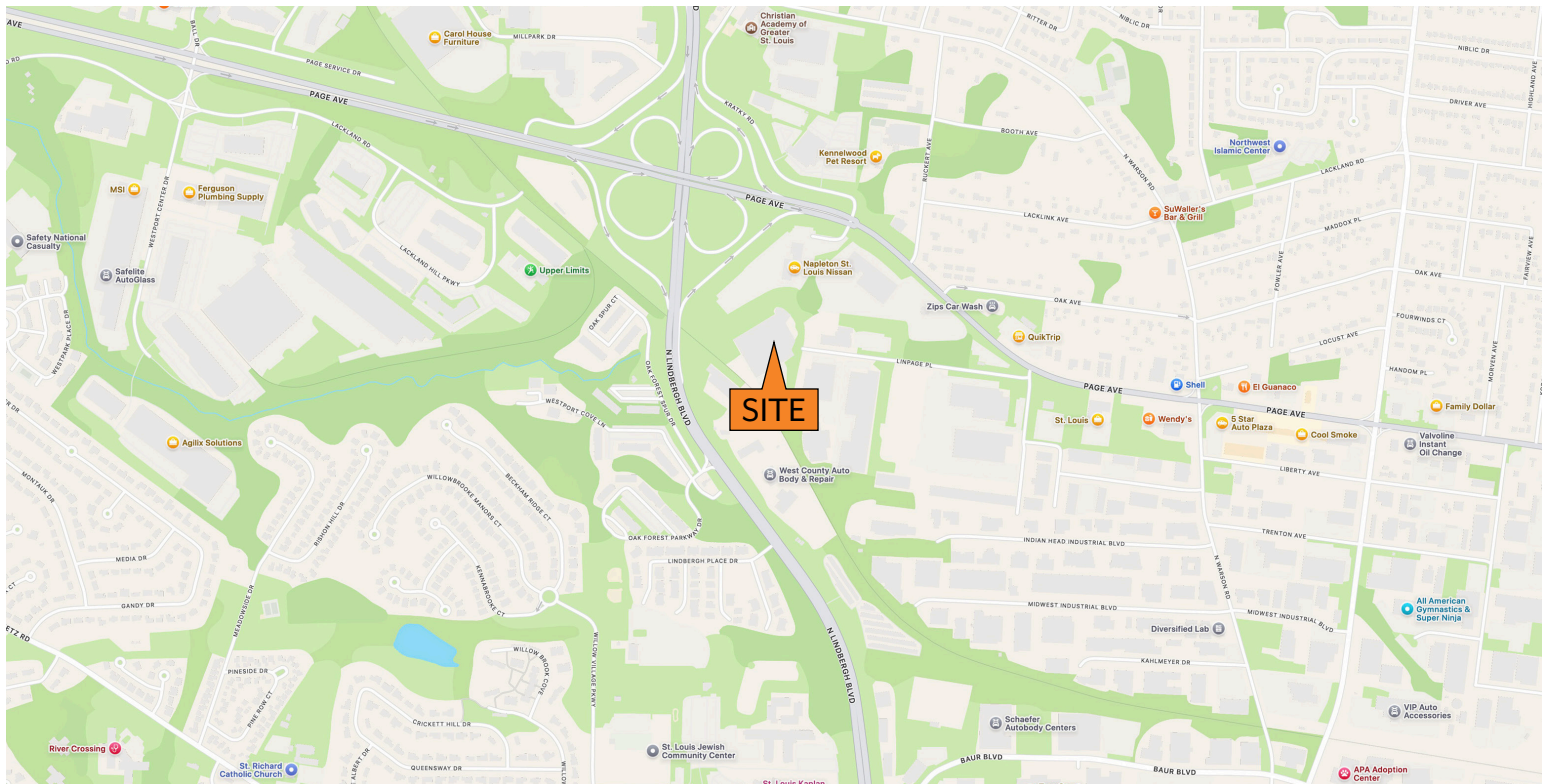
Information herein has been obtained from the owner of the property or from other sources. The brokers do not guarantee the accuracy of this information. Sellers and brokers make no representation as to the environmental or other conditions of the property and that purchaser investigate fully.

**COZAD COMMERCIAL REAL ESTATE**  
**MD REAL ESTATE ADVISORS**  
A subsidiary of Cozad Commercial Real Estate, Ltd.  
16 Sunnen Dr., Ste. 164 • St. Louis, MO 63143



# 11100 LINPAGE PLACE

## SAINT LOUIS, MO 63132



Information herein has been obtained from the owner of the property or from other sources. The brokers do not guarantee the accuracy of this information. Sellers and brokers make no representation as to the environmental or other conditions of the property and that purchaser investigate fully.

**COZAD COMMERCIAL REAL ESTATE**  
**MD REAL ESTATE ADVISORS**  
A subsidiary of Cozad Commercial Real Estate, Ltd.  
16 Sunnen Dr., Ste. 164 • St. Louis, MO 63143