

LEGEND

- SPACE NO.1 = 2,232.64 u.s.f.
- SPACE NO.2 = 2,335.88 u.s.f.
- SPACE NO.3 = 4,675.95 u.s.f.
- SPACE NO.3A = 981.32 s.f.
- COMMON AREA = 1,270.90 s.f.
- MECHANICAL AREA = 598.66 s.f.
- VERTICAL AREA = 612.77 s.f.

* SQUARE FOOTAGE TOTALS
ARE TAKEN FROM THE INTERIOR
SIDE OF EXTERIOR WALLS

TENANT SPACE NO.1	2,232.64 u.s.f.
TENANT SPACE NO.2	2,335.88 u.s.f.
TENANT SPACE NO.3	4,675.95 u.s.f.
TENANT SPACE NO.4	9,619.43 u.s.f.
TOTAL	18,863.90 u.s.f.

COMMON AREAS - 1ST FLOOR	1,270.90 s.f
COMMON AREAS - 2ND FLOOR	912.99 s.f
COMMON AREA TOTAL	2,183.89 s.f

MECHANICAL AREAS - 1ST FLOOR	598.66 s.f
MECHANICAL AREAS - 2ND FLOOR	418.98 s.f
MECHANICAL AREA TOTAL	1,017.64 s.f

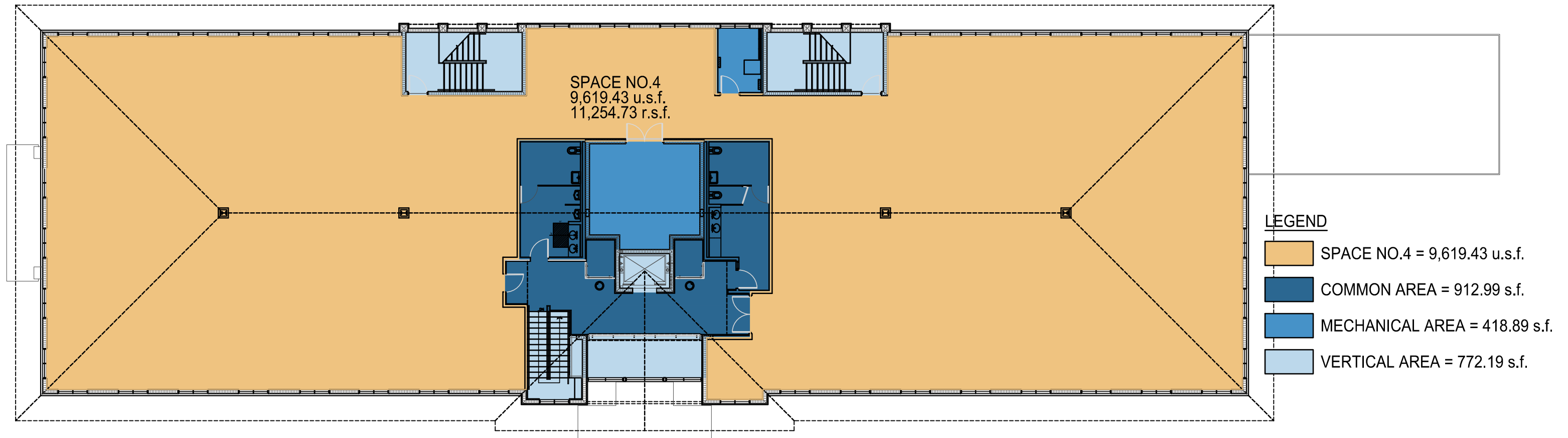
TENANT USF TOTAL	18,863.90 u.s.f.
COMMON AREA TOTAL	2,183.89 s.f.
MECHANICAL AREA TOTAL	9,619.43 s.f.
RENTABLE SPACE	22,065.34 r.s.f.

RSF	22,065.34 r.s.f.
USF	÷ 18,863.90 u.s.f.
BUILDING LOAD FACTOR	1.17

Drawing Title: First Floor Plan
Scale: 1/16" = 1'-0"
Date: 08-21-2020

SABEL PALM BANK BUILDING

5101 Fruitville Rd, Sarasota, FL 34232



Drawing Title: Second Floor Plan
Scale: 1/16" = 1'-0"
Date: 08-21-2020

SABEL PALM BANK BUILDING

5101 Fruitville Rd, Sarasota, FL 34232