



Avison Young - Raleigh-Durham | 5440 Wade Park Boulevard, Suite 200 | Raleigh, NC 27607 | 919 785 3434

FOR LEASE

Glenwood Corporate Center

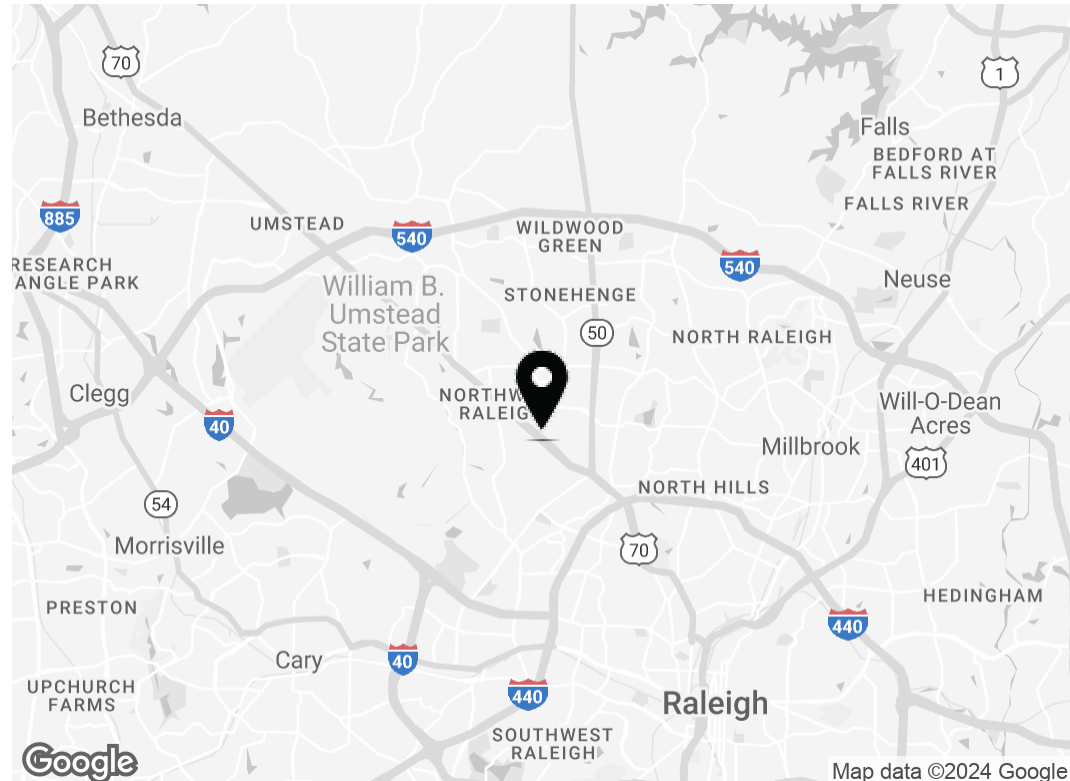
5811 Glenwood Avenue, Raleigh, NC 27612

**AVISON
YOUNG**

Property highlights

Office space available for lease in a highly visible building on Glenwood Avenue

- Flexible floor plans up to a full floor of 13,181 sf
- Monument signage opportunity on Glenwood Avenue
- Signalized intersection with dual entry points
- 24/7 building access
- Located near Pleasant Valley Shopping Center and numerous other amenities
- Conveniently located, with quick access to I-440 and I-540



Offering Summary

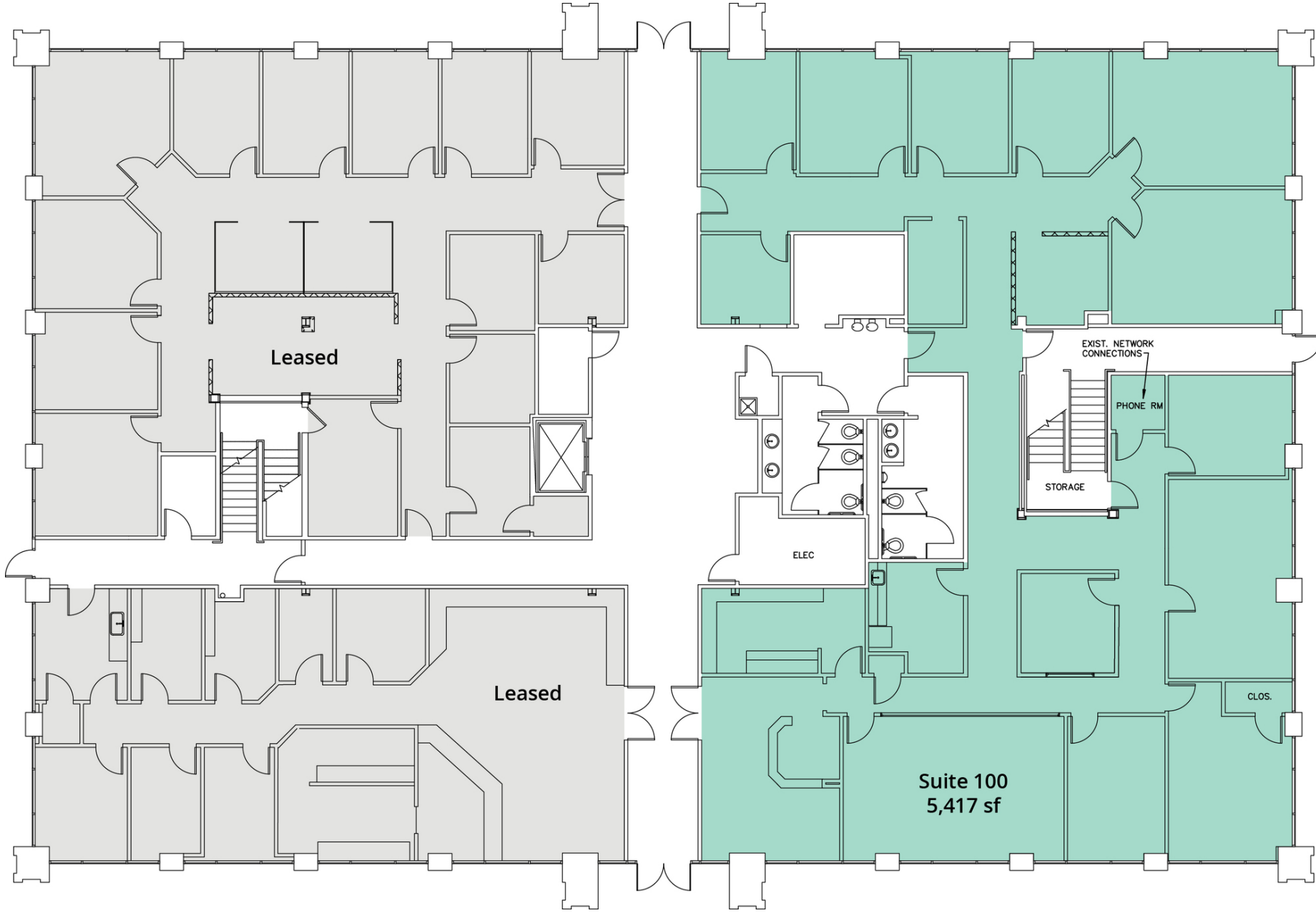
Lease Rate: \$23.50/sf, Full Service

Building Size: 37,401 sf

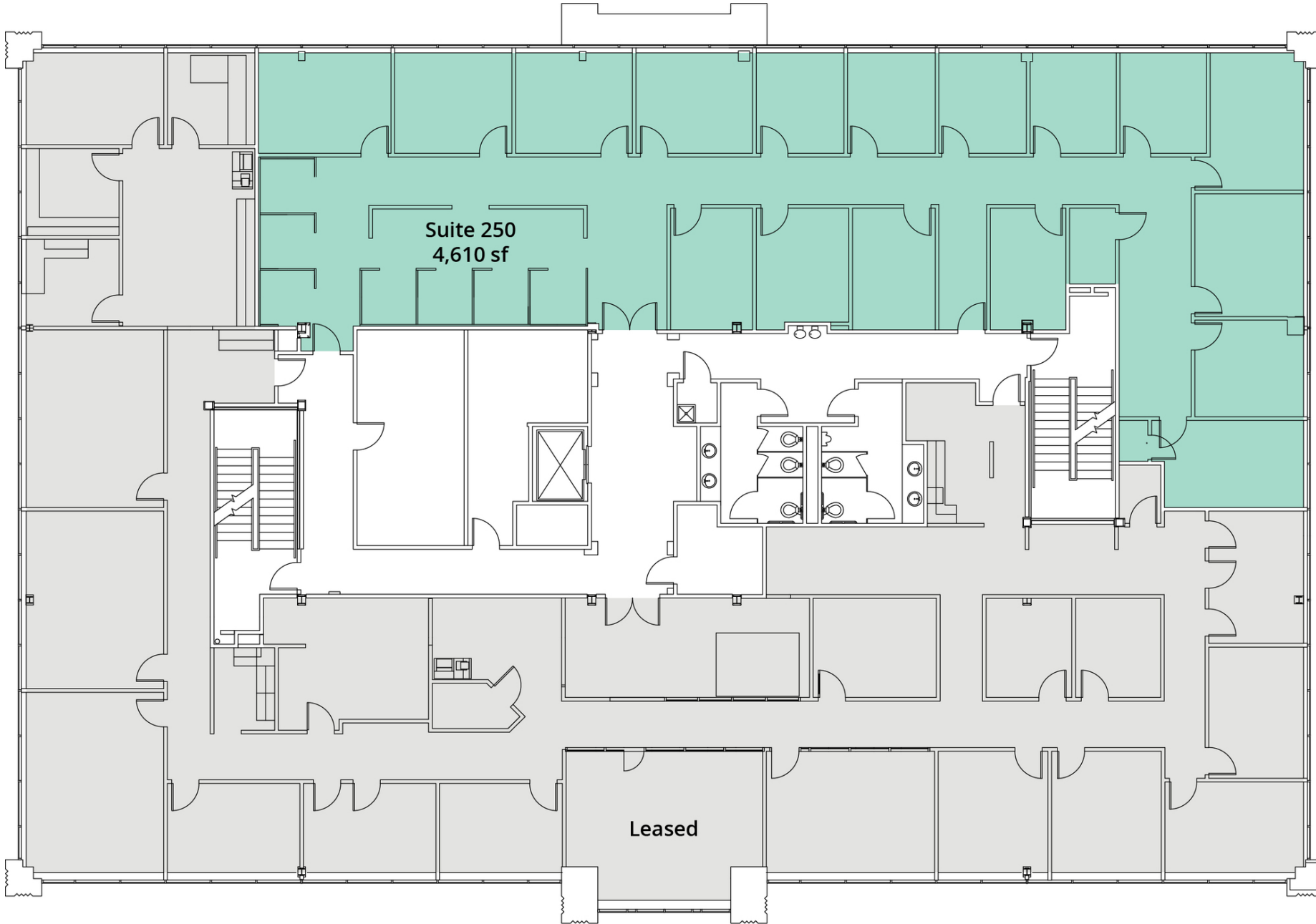
Available SF: 4,610 - 13,181 sf

Parking Ratio: 5.10/1,000 sf

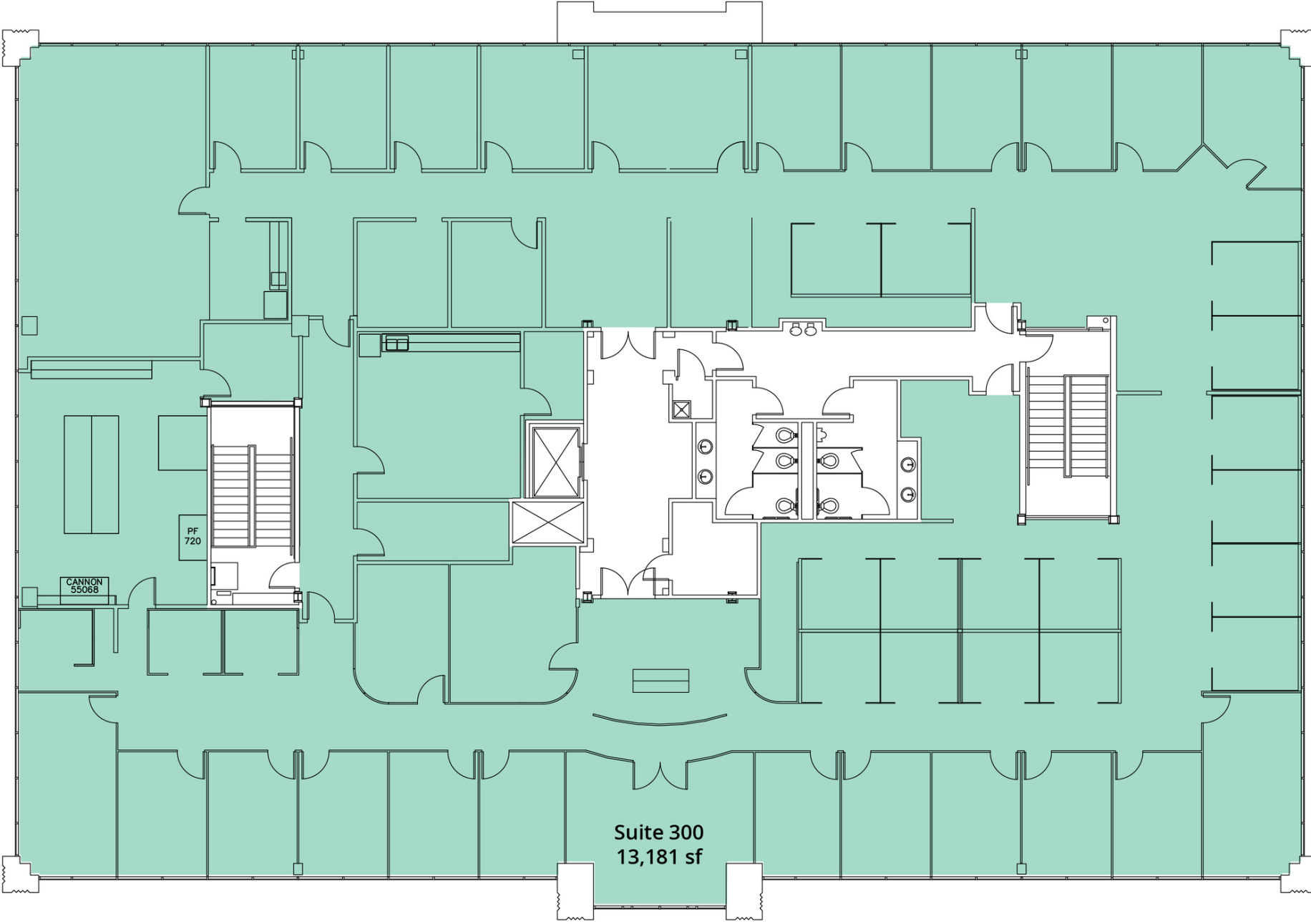
First Floor Plan

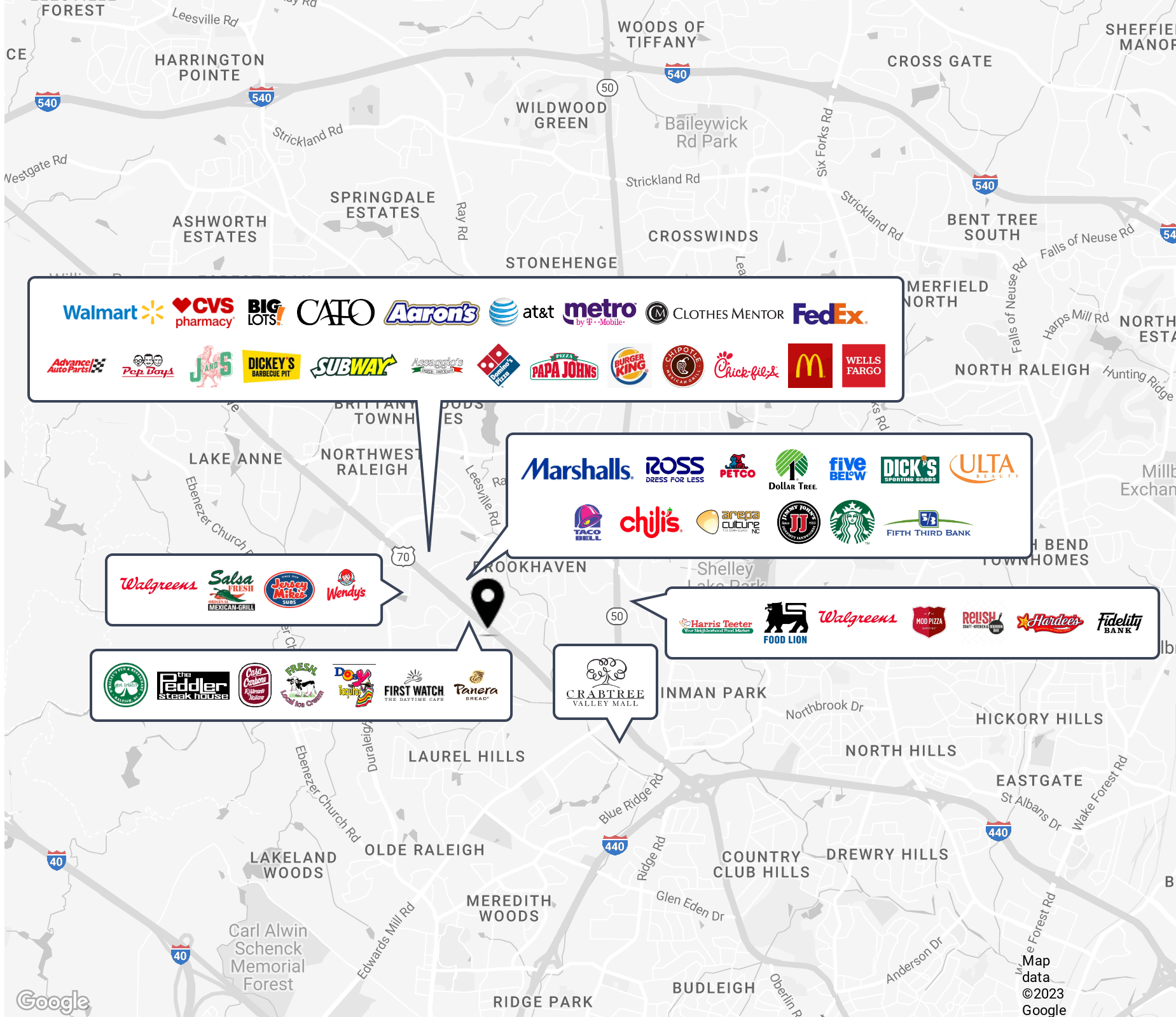


Second Floor Plan



Third Floor Plan





Demographics

88,181

Total households
within a 5-mile radius

183,423

Total population
within a 5-mile radius

\$102,835

Average hh income
within a 5-mile radius

\$382,741

Average home value
within a 5-mile radius





Gallery



Let's talk.

Michael Vulpis

Senior Vice President, Office Leasing & Sales

D 919 420 1562

michael.vulpis@avisonyoung.com

Carlo DiGiorgio

Senior Vice President, Office Leasing

D 919 420 1569

carlo.digiorgio@avisonyoung.com



Avison Young - Raleigh-Durham | 919 785 3434
5440 Wade Park Boulevard, Suite 200 | Raleigh, NC 27607

© 2024. Avison Young - Raleigh-Durham. Information contained herein was obtained from sources deemed reliable and, while thought to be correct, have not been verified. Avison Young - Raleigh-Durham does not guarantee the accuracy or completeness of the information presented, nor assumes any responsibility or liability for any errors or omissions therein.

