

0.90 Acre Retail Site
19550 Cochran Blvd,
Port Charlotte, FL 33948

David Gryboski
David@ghgdevelopment.com
813-765-7642



Port Charlotte High School

Charlotte Technical College

Charlotte County Government Office Complex

New BJ's Wholesale
Opened in 2022

Site



0.90 Acre Retail Site
19550 Cochran Blvd,
Port Charlotte, FL 33948

David Gryboski
David@ghgdevelopment.com
813-765-7642

KOHL'S

PETSMART

BJ's
Live Generously.

BJ's Wholesale Opened in 2022

URGENT CARE
american family care

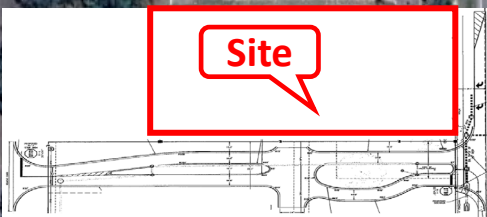
New Construction

New Construction

MCALISTER'S
DELI

Firestone
COMPLETE AUTO CARE

Site



19,400 AADI

Cochran Blvd

MILLENNIUM
PHYSICIAN GROUP

Car Wash

Suncoast
Credit Union

Dentist

Dentist

Quesada Ave

Total Wine
& MORE

Image © 2024

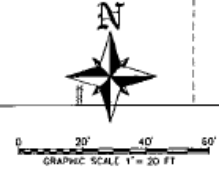
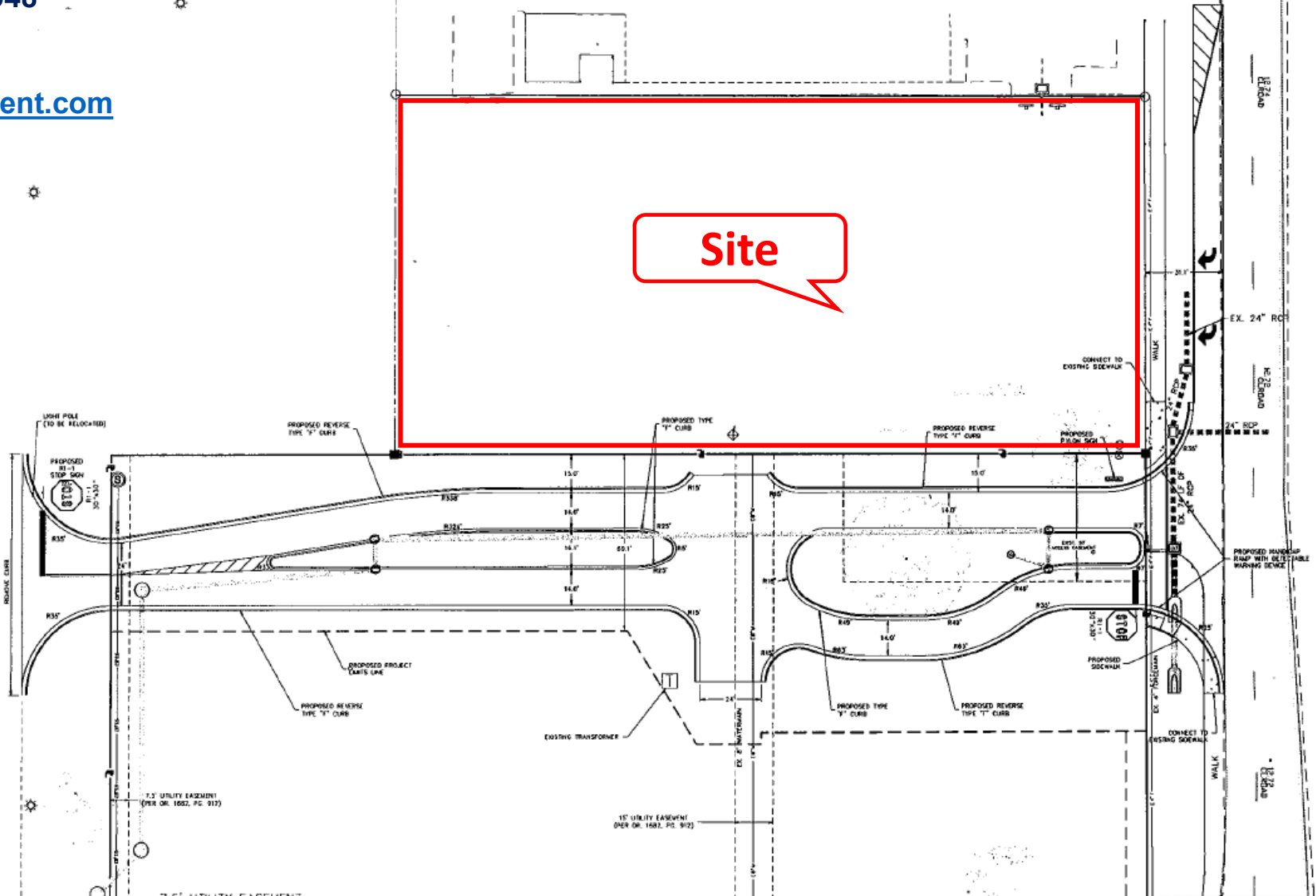
TAKE 5
RESTAURANT

Publix

Google Earth

**Access Drive for
0.90 Acre Retail Site
19550 Cochran Blvd,
Port Charlotte, FL 33948**

**David Gryboski
David@ghgdevelopment.com
813-765-7642**



PREPARED FOR
BJ'S WHOLESALE CLUB, INC
350 CAMPUS DRIVE
MALLBOROUGH, MA 01750
PHONE: (978) 407-5248

ALL ELEVATIONS ON CIVIL ENGINEERING PLANS REFERENCE: **EXIST**

NO.	DATE	REVISION DESCRIPTION	BY

BANKS ENGINEERING
Professional Engineering, Planning, & Land Services
Serving The State Of Florida
1161 TAMM TRAIL - BLDG 3 UNIT 501
PORT CHARLOTTE, FLORIDA 33949
PHONE: (813) 853-1183 FAX: (813) 822-1114
ENGINEERING LICENSE # 75 848
SURVEY LICENSE # 69 1830
www.bankseng.com

RYAN W. POWERS, P.E.
LICENSE NO. 82437

SITE DEVELOPMENT PLAN
BJ'S WHOLESALE CLUB
CHARLOTTE COUNTY, FLORIDA

DATE	PROJECT	DRAWING	DESIGN	DRAWN	CHECKED	SCALE	SHEET
1-17-23	4479	_SDP	RWP	TBY	RWP	1"=20'	6

BJ'S WHOLESALE CLUB