

FOR SALE

\$4,300,000

Blvd. Apartments

125 W St George Blvd

St. George, UT 84790



NAI Excel

COMMERCIAL REAL ESTATE SERVICES. WORLDWIDE

62929



243 E. St. George Blvd. Suite 200
St George, Utah 84770
435.628.1609 | naiexcel.com

125 W St George Blvd
St. George, UT 84790

Jon Walter, MBA, CCIM
435.627.5719
jwalter@naiexcel.com

Kevin O'Brien, Ph.D.
435.634.0556
kevin@naiexcel.com

Offering Memorandum

Terms and Conditions

This offering, including any related digital marketing, contains selected information pertaining to the Property and does not purport to be a representation of the state of the Property, to be all-inclusive, or to contain all or part of the information which interested parties may require to evaluate a purchase or lease of real property.

Financial Information

Any and all financial projections and information are provided for general reference purposes only and have been gathered from sources deemed reliable. Certain assumptions have been made relating to the general economy, market conditions, competition and other factors beyond the control of seller and NAI Excel. Therefore, all projections, assumptions and other information provided and made herein are subject to material variation.

Summary Documents

Additionally, all references to acreage, square feet, and other measurements are approximations. Any demographics, geographic information systems(GIS), maps, photography, zoning, site plan, survey, engineering, architectural drawings, and any other information are without assurance of their accuracy, time sensitivity, completeness, or status of approval. Documents presented may be preliminary, have no assurance of being "as built", and may not reflect actual property boundaries or improvements. Additional information and an opportunity to inspect the Property can be made available to qualified parties. In this Memorandum, certain documents are described in summary form. These summaries do not purport to be complete nor necessarily accurate descriptions of the full documents referenced herein. Interested parties are expected to review and confirm all such summaries and other documents of whatever nature independently and not rely on the contents of this Memorandum in any manner.

Non-Warranty

Neither the seller or NAI Excel, nor any of their respective directors, officers, Affiliates or representatives make any representation or warranty, expressed or implied, as to the accuracy or completeness of this Offering Memorandum or any of its contents, as to the financial performance of the property, or as to the condition of the Property, malfunctions or mechanical defects on the Property or to any improvements thereon, including but not limited to the material, workmanship or mechanical components of the structures, foundations, roof, heating, plumbing, electrical or sewage system, drainage or moisture conditions, air conditioning, or damage by the presence of pests, mold or other organisms, environmental condition, soils conditions, the zoning of the Property, the suitability of the Property for interested parties intended use or purpose, or for any other use or purpose.

No Obligation

No legal commitment or obligation shall arise by reason of your receipt of this Memorandum or use of its contents; Interested Parties are to rely solely on its investigations and inspections of the Property in evaluating a possible purchase or lease of the real property. The seller expressly reserves the right, at its sole discretion, to reject any or all offers to purchase or lease the Property, and/or to terminate discussions with any entity at any time, with or without notice, which may arise as a result of review of this Memorandum.

Confidentiality

By receipt of this Memorandum, you agree that this Memorandum and its contents are confidential in nature, that you will hold and treat such in the strictest confidence and that you will not disclose this Memorandum, or any of its contents, to any other entity without the prior written authorization of the seller or NAI Excel. If after reviewing this Memorandum, you have no further interest in purchasing or leasing the Property, please delete or return this Memorandum to NAI Excel.

Property Details

PARCEL #	PARCEL SIZE	BUILDING SF	YEAR BUILT	DESCRIPTION	PRICING
SG-342-B-1-CB	0.62	10,135 1,750	1948	Apartments Corner Bldg.	\$2,995,000
SG-343-CB	0.04	881	1930	Cottage	
SG-341-A-1-CB	0.01				
SG-344-9-29-2011	0.42	1,156	1994	Healing Herb	\$1,100,000
SG-342-A-CB	0.15	1,100	1974	Auto Building	\$695,000
TOTAL	1.24	15,022			\$4,300,000

USE	Multifamily Commercial
ZONING	C-4
DETAILS	25 Multifamily Units Two Commercial Buildings Cottage

- Excellent value add property and future redevelopment opportunity?
- 25 Studio or One Bedroom Apartments and Commercial Tenants
- Prominently Located downtown on St George Blvd and 100 W
- Located in an Opportunity Zone
- Undeveloped Land that could be put to use
- Rent Roll and Financial Statements available for qualified buyers upon signing an NDA.
- Conceptual drawings for 99 residential units and 7 commercial spaces



OR TEXT 21666 TO 39200

Message frequency will vary. Message and data rates may apply. Reply HELP for help or STOP to cancel.

[ARTI Terms of Service](#) | [ARTI Privacy Statement](#)



Aerial Map

- Shops/Tenants
- Schools/Hospitals
- Public Parks
- Govt. Buildings
- Airport



Area Map



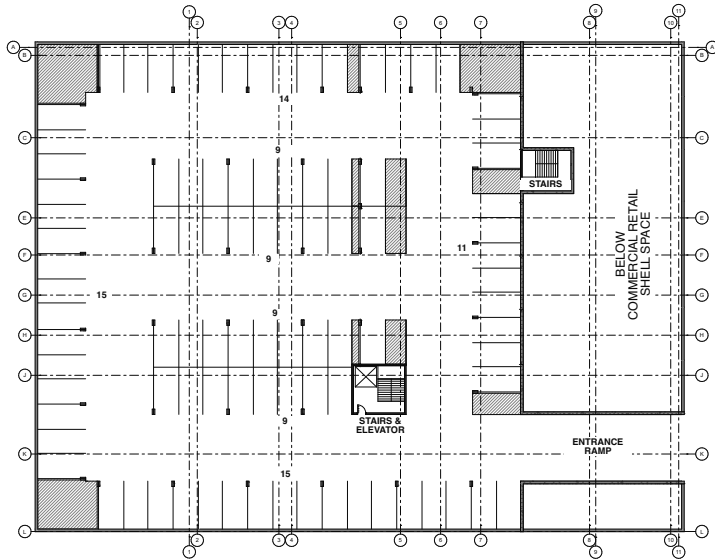
Conceptual Elevation Plan

Preliminary



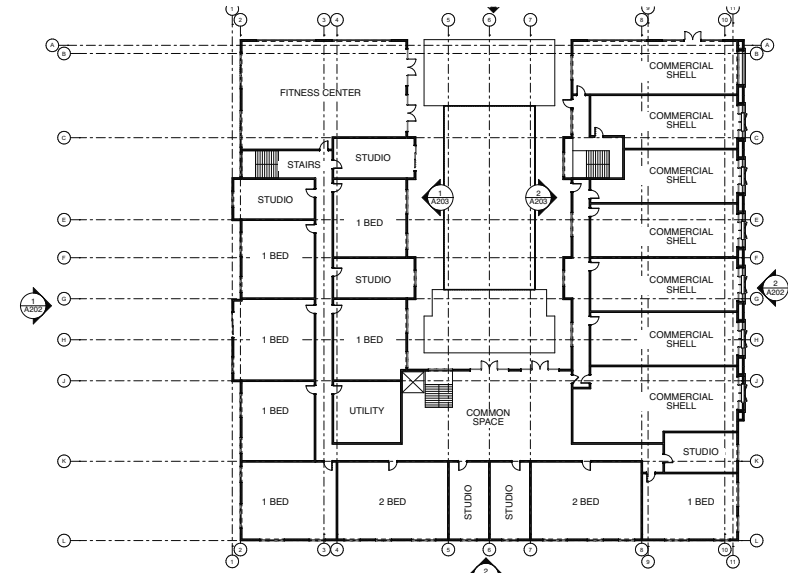
Conceptual Flor Plan

Preliminary

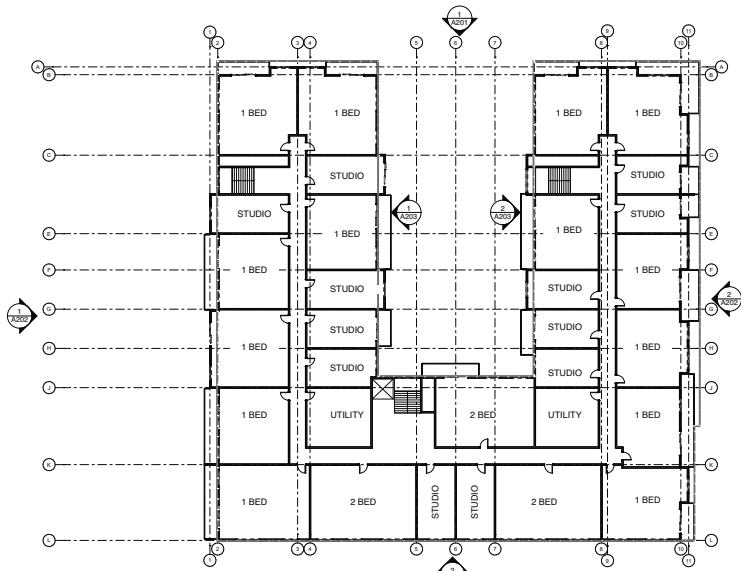


1
AT101
PARKING LEVEL
SCALE: 1/8" = 1'-0"

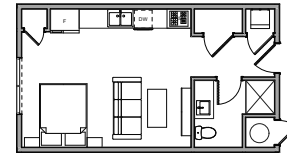
91 TOTAL STALLS



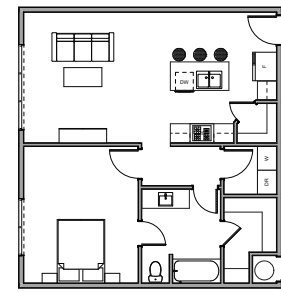
1
AT102
FIRST FLOOR PLAN
SCALE: 1/8" = 1'-0"



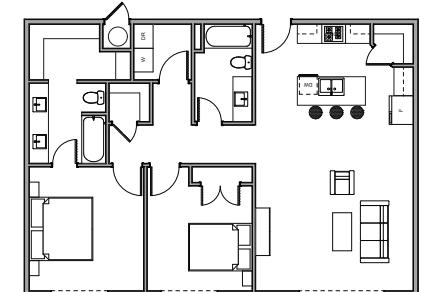
1
AT103
SECOND-FOUR FLOORS
SCALE: 1/8" = 1'-0"



1
AT104
ENLARGED TYPICAL STUDIO APARTMENT
SCALE: 1/4" = 1'-0"



1
AT105
ENLARGED TYPICAL ONE BEDROOM APARTMENT
SCALE: 1/4" = 1'-0"



1
AT106
ENLARGED TYPICAL TWO BEDROOM APARTMENT
SCALE: 1/4" = 1'-0"

Conceptual Elevation Plan

Preliminary



Conceptual Elevation Plan

Preliminary



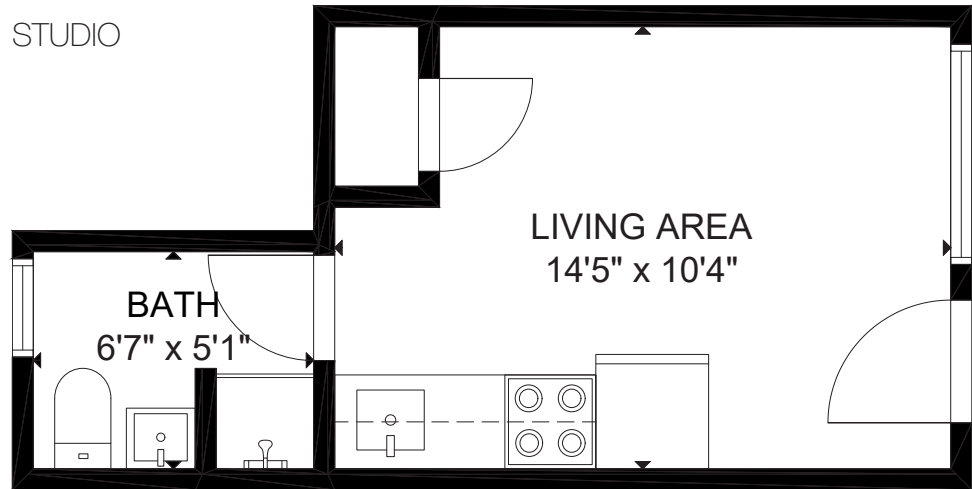




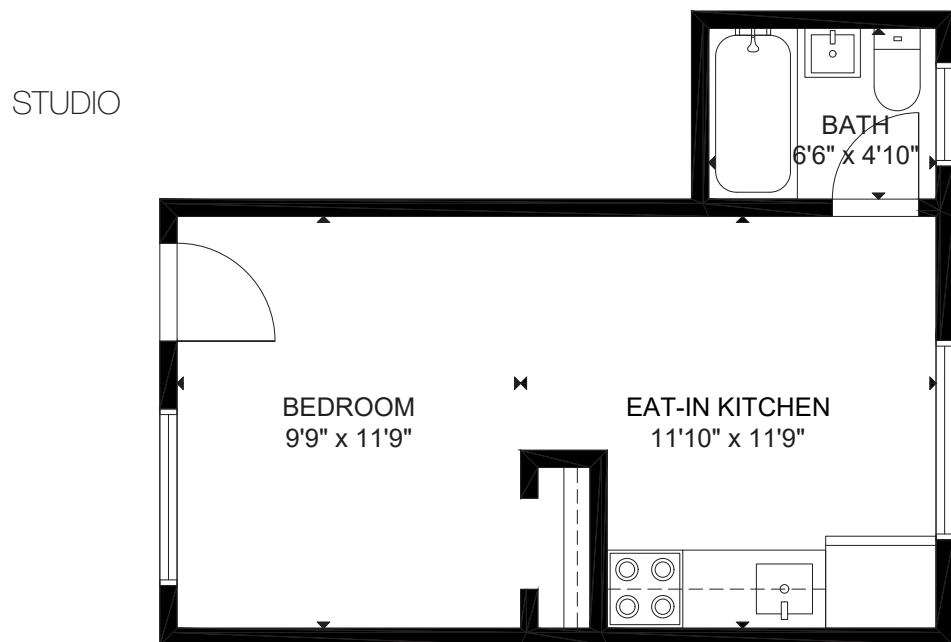


Sample Floor Plans

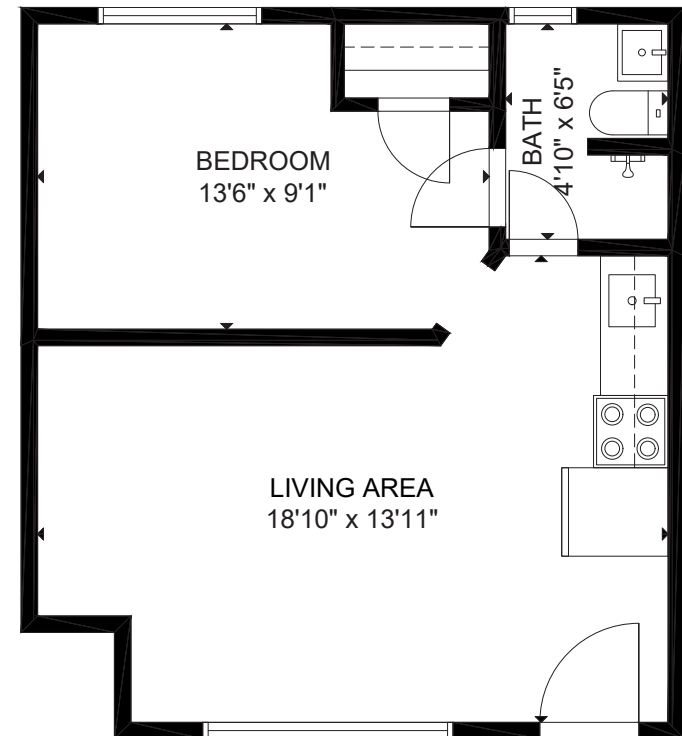
 [CLICK HERE](#)
FOR A 3D TOUR
STUDIO APT



 [CLICK HERE](#)
FOR A 3D TOUR
ONE BEDROOM



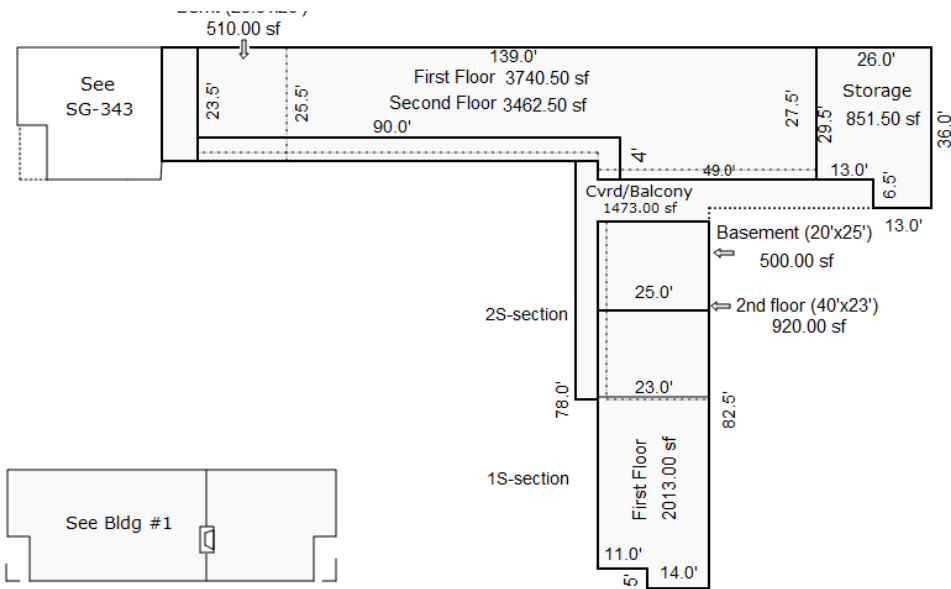
ONE BEDROOM



Buildings Floor Plans

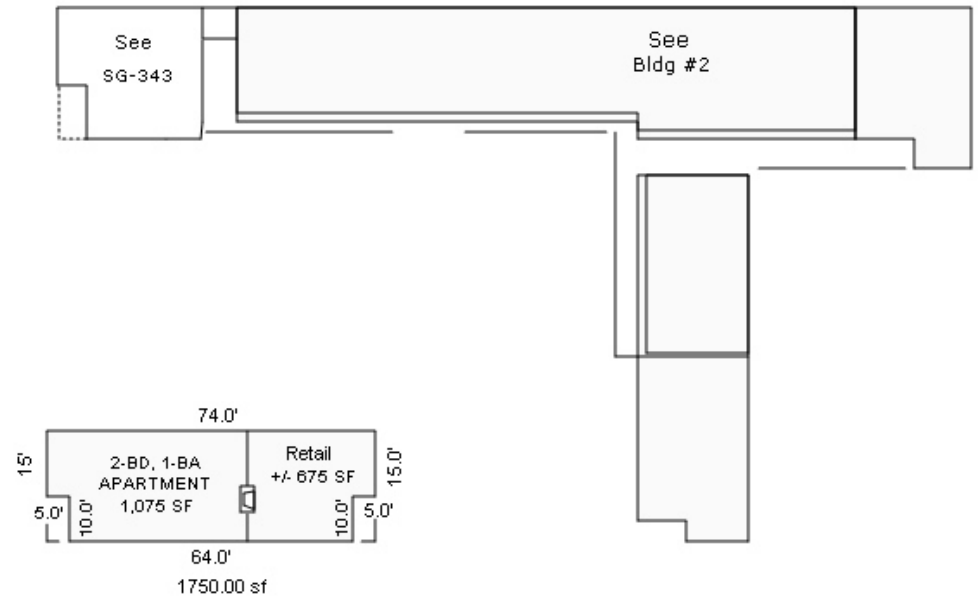
BLDG 1

TYPE	Commercial
YEAR BUILT	1948
SF	1,750 ±



BLDG 2

TYPE	Multiple Unit
YEAR BUILT	1948
SF	10,135 ±



Source: Washington County Assessors Office

Buildings Floor Plans

BLDG 1

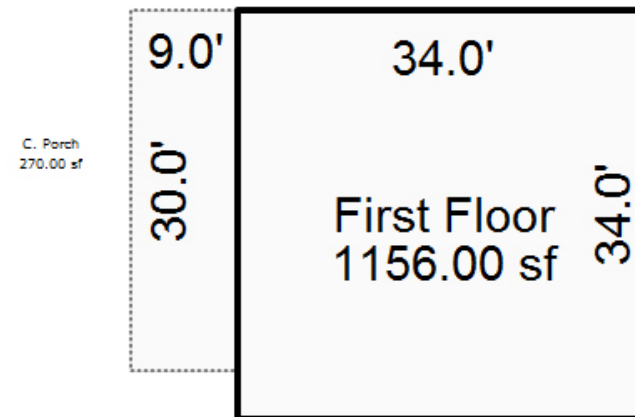
TYPE	Multiple Unit
YEAR BUILT	1930
SF	881 ±

MOTEL / APTS



BLDG 1

TYPE	Commercial
YEAR BUILT	1994
SF	1,156 ±



Source: Washington County Assessors Office

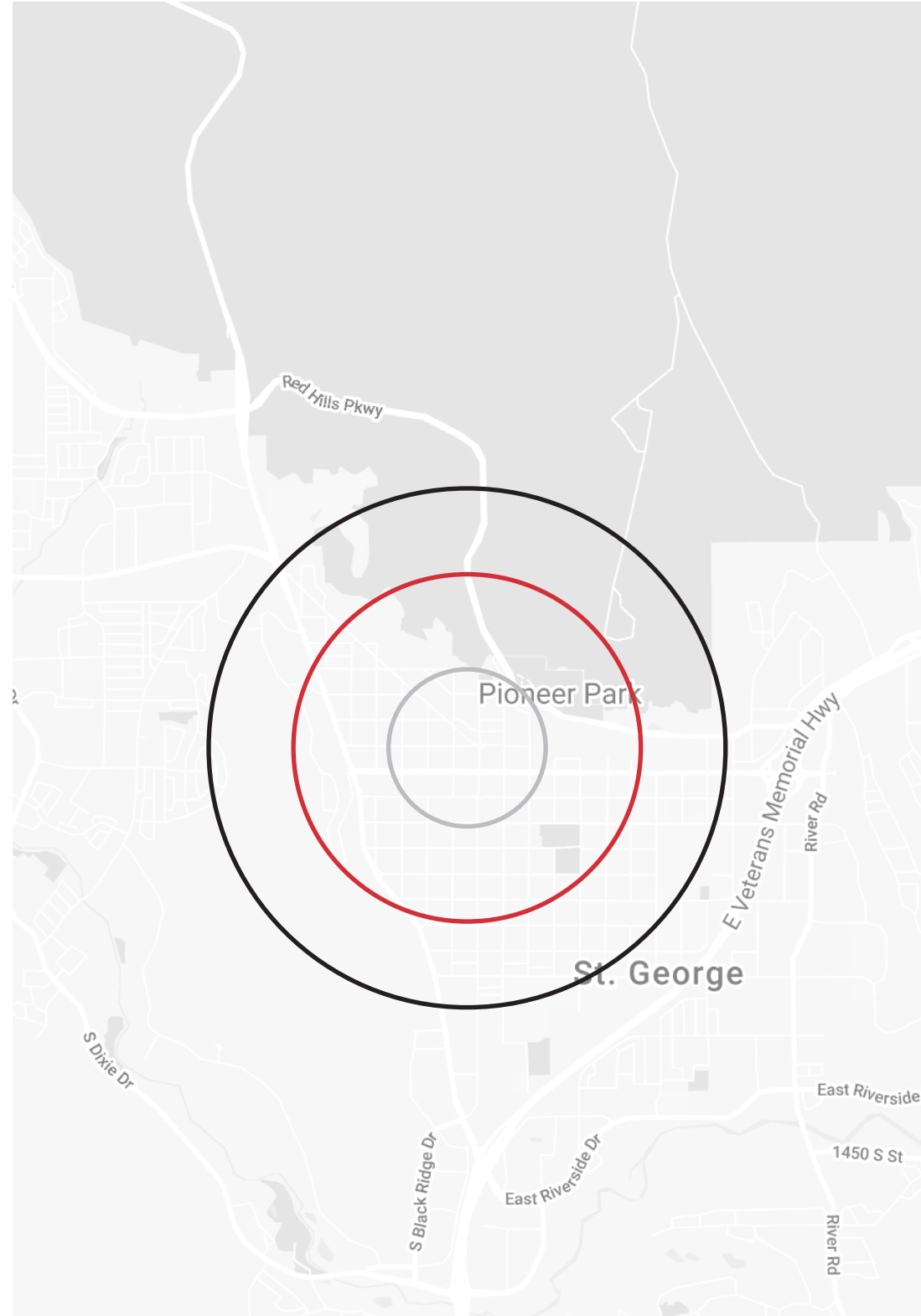
Demographics

POPULATION	1-mile	3-mile	5-mile
2024 Population	9,033	57,839	114,046

HOUSEHOLDS	1-mile	3-mile	5-mile
2024 Households	3,470	21,143	39,901

INCOME	1-mile	3-mile	5-mile
2024 Average HH Income	\$73,259	\$96,864	\$112,115

STREET	ADDT
St George Blvd	24,000





Distance to Major Cities

Salt Lake City, Utah	302 MILES
Las Vegas, Nevada	122 MILES
Los Angeles, California	389 MILES
San Diego, California	4450 MILES
Denver, Colorado	629 MILES
Phoenix, Arizona	422 MILES

Market Research

Our offices publish commercial and residential market research across Utah, Nevada and Texas. NAI Excel is known for their deep and rich data. Lending institutions, appraisers, and business consultants look to our market reports as the authority on commercial real estate market trends. We have built and maintained a comprehensive database comprised of data collected from some of the largest appraisal firms in the region, NAI transaction, and other data. NAI publishes statistics for the office, retail, industrial, and multifamily markets. Additionally, single family housing reports are published for every major market from Las Vegas to Salt Lake City and from San Antonio to Austin, through our affiliate.

CLICK HERE



VIEW MARKET STATISTICS
FOR OFFICE, RETAIL,
INDUSTRIAL & MULTIFAMILY

<https://excelcres.com/market-research>

NAI Excel

COMMERCIAL REAL ESTATE SERVICES, WORLDWIDE

243 E. St. George Blvd. Suite 200
St George, Utah 84770
435.628.1609 | naixel.com

Jon Walter, MBA, CCIM
435.627.5719
jwalter@naixel.com

Kevin O'Brien, Ph.D.
435.634.0556
kevin@naixel.com