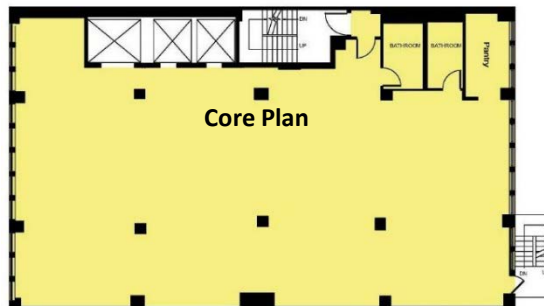
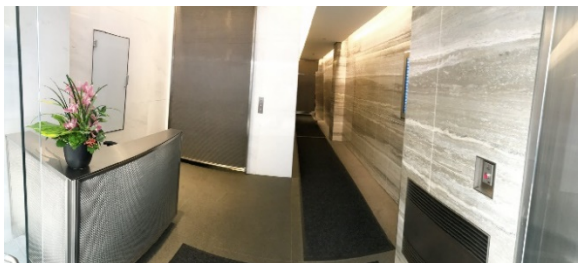
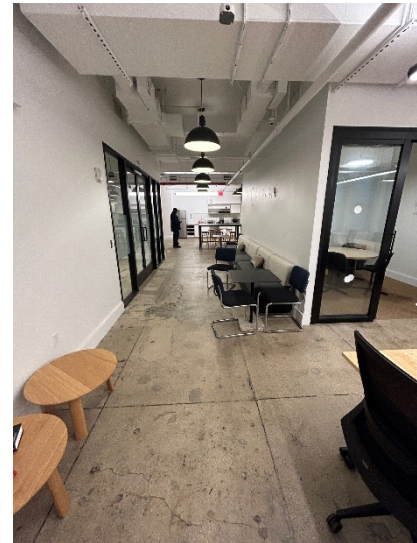
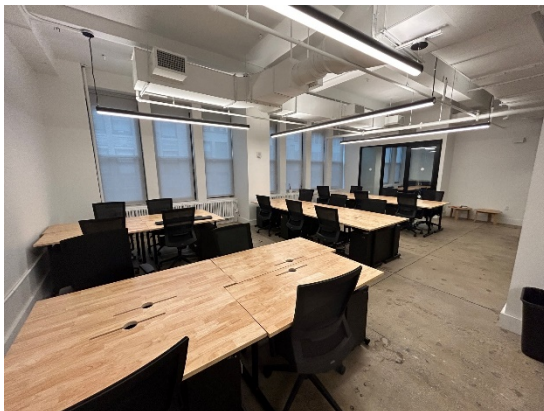
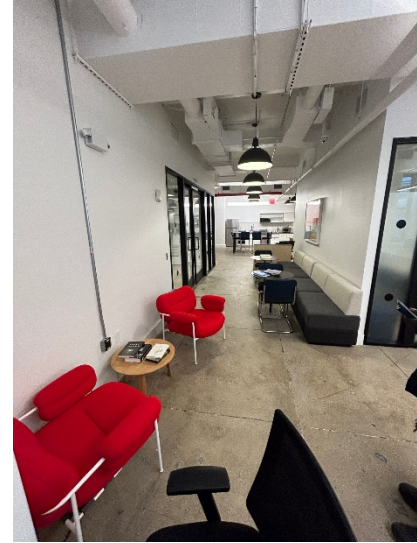


3 FULL FLOORS - 5,250 RSF (each)

GRAND CENTRAL / MIDTOWN SOUTH

10 EAST 38th Street (bet. Madison and 5th Ave)

For Lease Floors: 5th, 7th and 9th



SPACE DETAILS

12.5' HIGH EXPOSED CEILING
5TH FL: NEW WHITE BOX (CAN BUILD)
7TH + 9TH FLOORS: FULLY BUILT TECH OFFICE
FURNISHED BUILT FLOORS
WET PANTRY, PRIVATE BATHROOMS
HARDWOOD FLOORS

PROPERTY HIGHLIGHTS

RENOVATED, ATTENDED LOBBY
ELEVATORS: 2 PASSENGER + 1 FREIGHT
DIRECT ELECTRIC
24/7 ACCESS VIA KEY CARD
TENANT-CONTROLLED HVAC
HIGH-SPEED INTERNET: WIREScore SILVER

Subway Access: 4, 5, 6, 7, B, D, F, M, S
Near: Grand Central Terminal, Bryant Park, Empire State Building

EXCLUSIVE AGENTS:

WILLIAM BECKER
718.482.0700 x135
bill@fpr.nyc

DAVID DYNAK
718.482.0700 x191
david@fpr.nyc

Full Commissions Paid

Information contained herein is from sources deemed reliable but is subject to errors, omissions, change of price or term, and withdrawal without prior notice at any time.