

# FOR LEASE

617 NW 124TH ST, OKLAHOMA CITY, OK, 73116



**HORIZON**  
COMMERCIAL REAL ESTATE

**David Portman, CCIM**  
**Principal**

**405.850.1107**  
**[Horizoncreek.com](http://Horizoncreek.com)**





# PROPERTY INFORMATION

**\$12.50/PSF + OPEX**

PROPERTY TYPE	WAREHOUSE
SPACE SIZE	6,039 SF
CLEAR HEIGHT	16' - 20'
ZONING	I-2
YEAR BUILT	2025



NEW INDUSTRIAL BUILDING AVAILABLE FOR LEASE



1,481 SF OF OFFICE SPACE AVAILABLE WITH HVAC



INCLUDES TWO 12'x14' INSULATED, SECTIONAL O.H. DOORS



FEATURES SPRAY FOAM INSULATION, GAS HEATER IN THE WAREHOUSE, & LED LIGHTS



CENTRALLY LOCATED IN THE LEGENDS BUSINESS PARK IN OKLAHOMA CITY



NEWLY CONSTRUCTED SITE IDEAL FOR STORAGE, STUDIOS, CONTRACTORS & MORE!



PRIME NORTHWEST OKC LOCATION NEAR CHISHOLM CREEK & BROADWAY EXT

ALTHOUGH THE INFORMATION HAS BEEN OBTAINED FROM TRUSTWORTHY SOURCES, HORIZON CRE MAKES NO GUARANTEES, ASSURANCES, OR WARRANTIES ABOUT THE COMPLETENESS OR ACCURACY OF THE DATA. THIS PROPERTY IS BEING PRESENTED WITH THE POSSIBILITY OF ERRORS AND OMISSIONS. MODIFICATIONS MAY OCCUR THAT ALTER THE FACTS OF THIS PRESENTATION WITHOUT NOTICE.

**HORIZON**  
COMMERCIAL REAL ESTATE

**David Portman, CCIM**  
**Principal**

**405.850.1107**  
**Horizoncreek.com**





**HORIZON**  
COMMERCIAL REAL ESTATE

**David Portman, CCIM**  
**Principal**

**405.850.1107**  
**[Horizoncreek.com](http://Horizoncreek.com)**



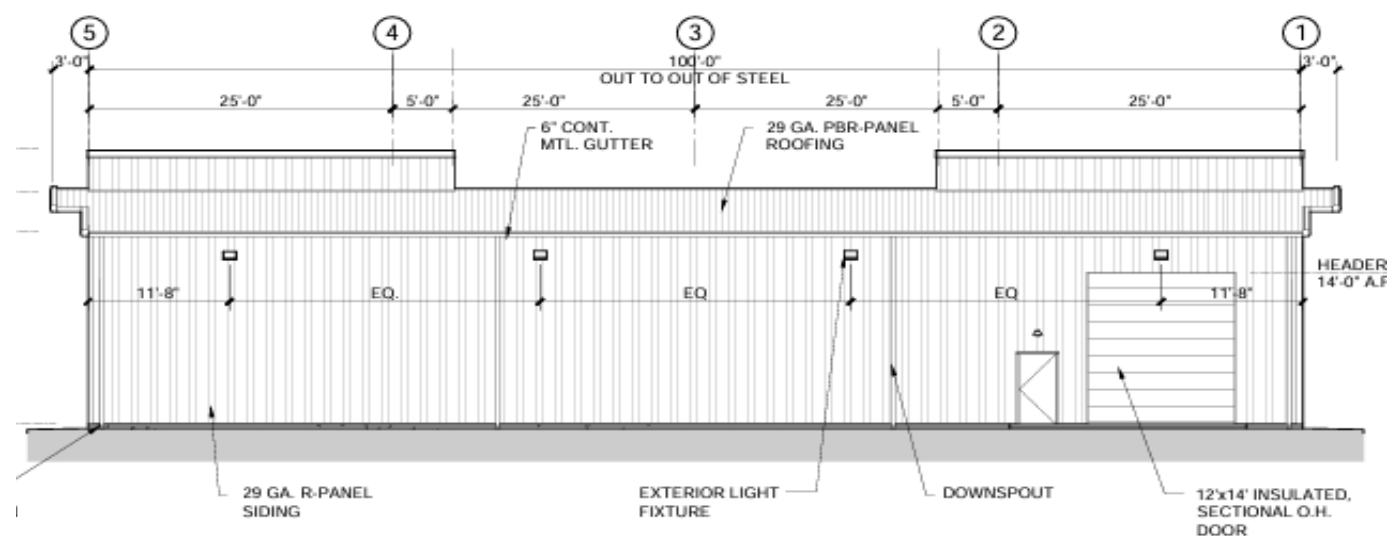
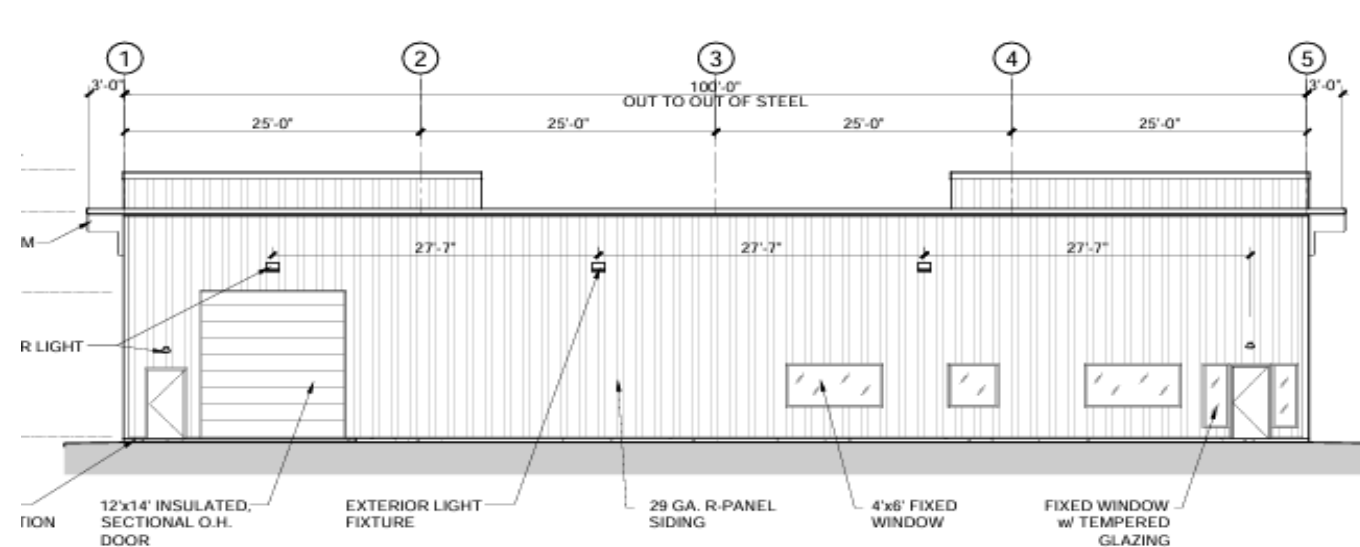


**HORIZON**  
COMMERCIAL REAL ESTATE

**David Portman, CCIM**  
**Principal**

**405.850.1107**  
**[Horizoncreek.com](http://Horizoncreek.com)**





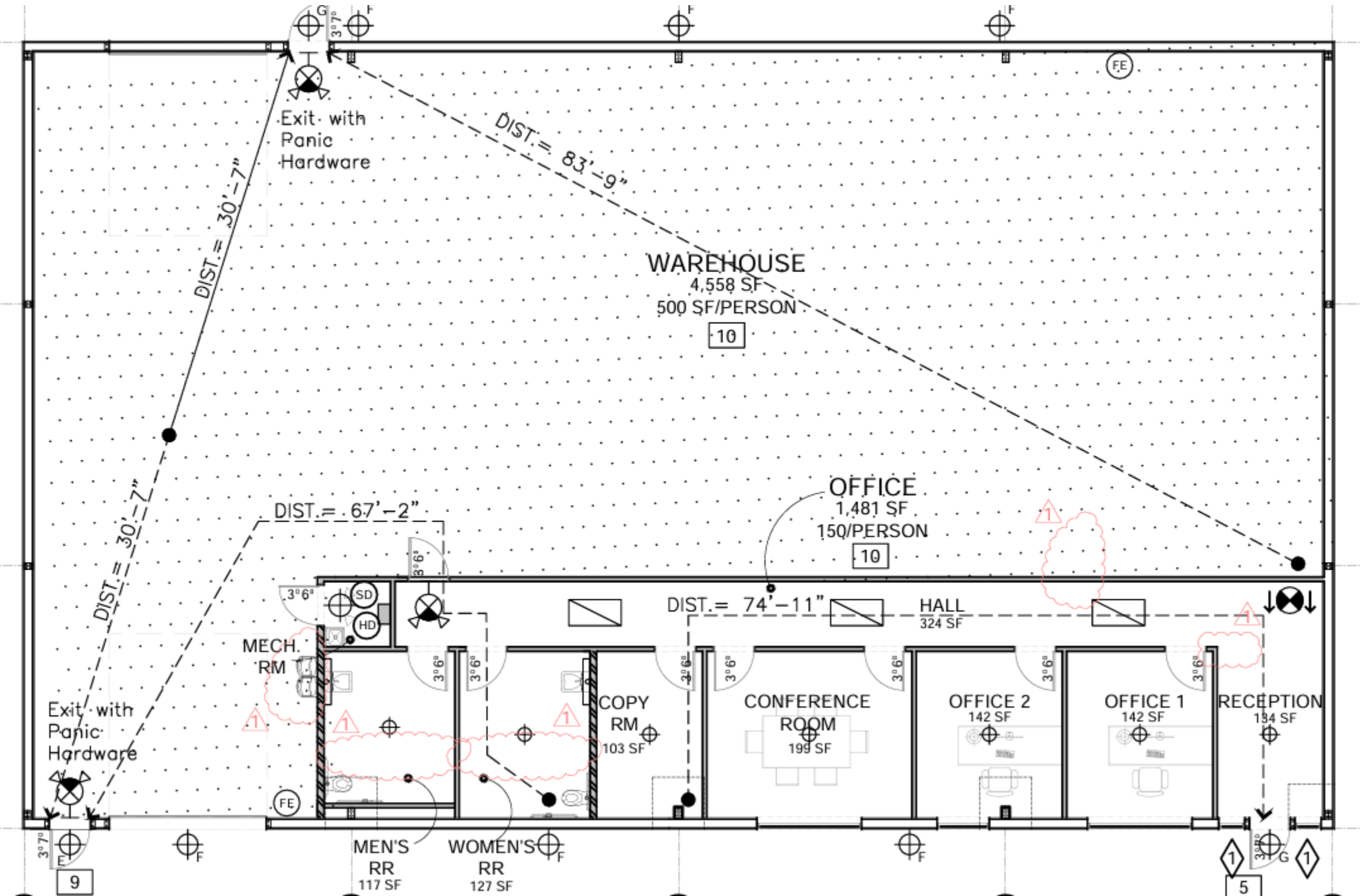
**HORIZON**  
COMMERCIAL REAL ESTATE

**David Portman, CCIM**  
**Principal**

**405.850.1107**  
**Horizoncreek.com**



617 NW 124th Street, Oklahoma City, OK, 73116





617 NW 124th Street, Oklahoma City, OK, 73116

