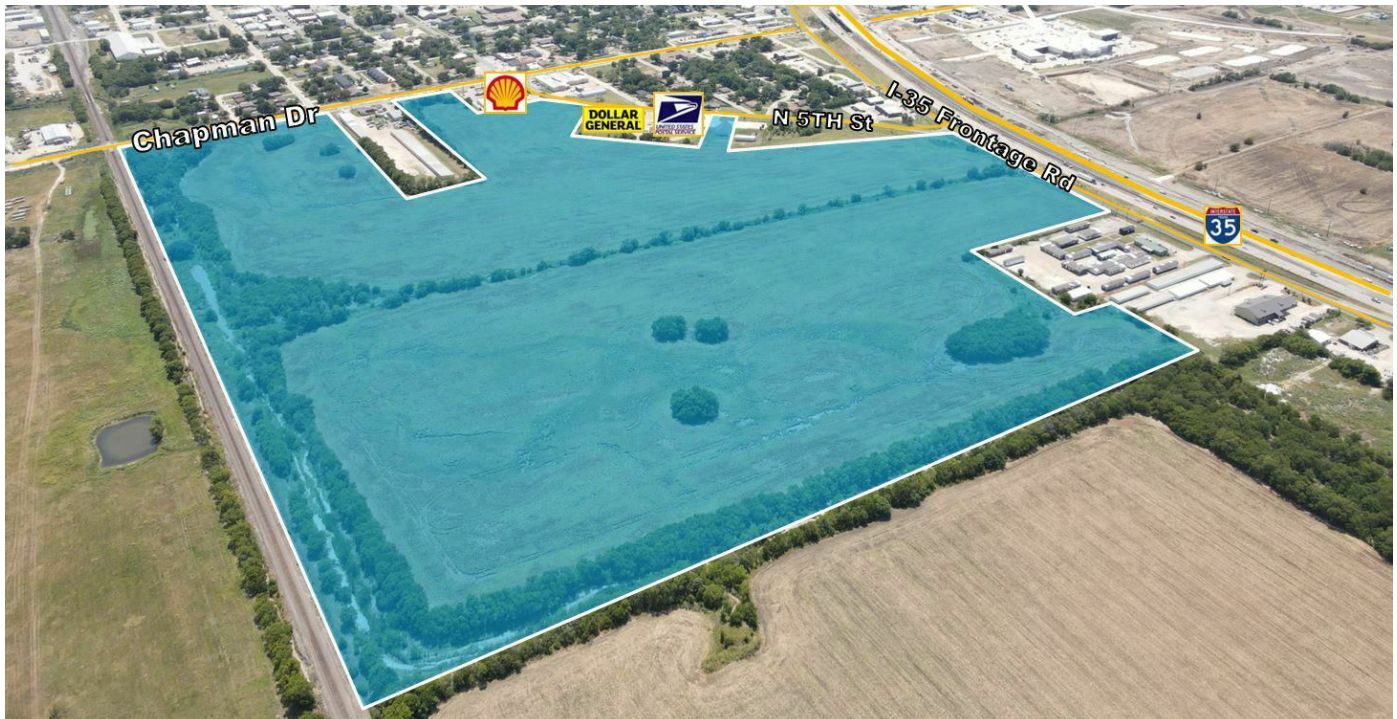


FOR SALE

NEQ I-35 & FM455

SANGER, TX 76266

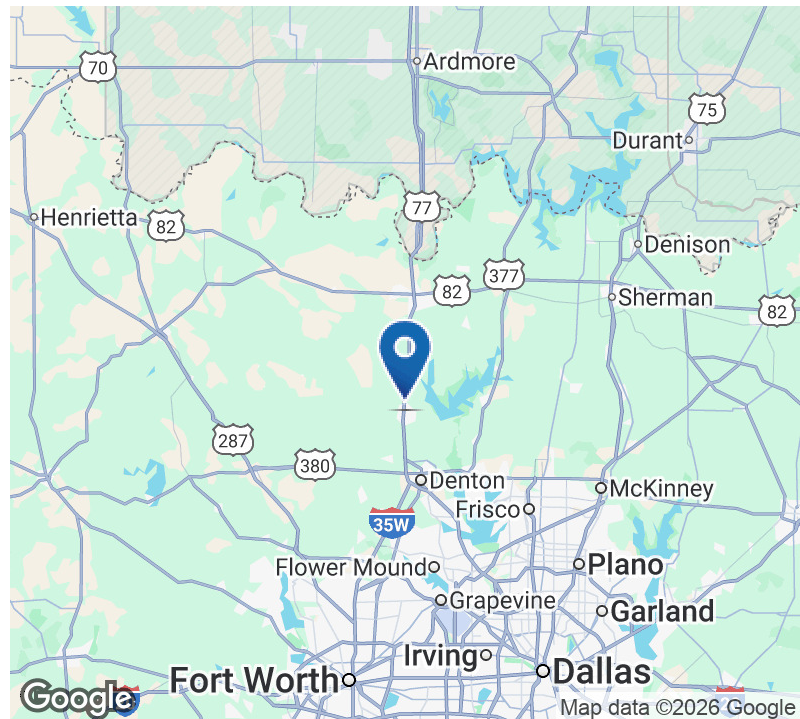


Property Highlights

- Industrial zoning with potential for retail & other commercial uses
- Excellent access & visibility from Interstate 35
- 10 min to Denton
- 30 min to Alliance Airport
- 40 min to DFW Airport
- City water & sewer to site
- Close proximity to national retailers
- Near Wal-Mart distribution center

Offering Summary

| | |
|-------------|-------------------------|
| Sale Price: | Call Broker for Pricing |
| Lot Size: | 99.52 Acres |
| Zoning: | I - Industrial |



AXIS
REALTY GROUP

212 South Elm St.
Denton, TX 76201
940.891.2947
axisrealty.biz

BRAD ANDRUS
brad@axisrealty.biz
940.891.2947

ALEX PAYNE
alex@axisrealty.biz
940.891.2947

CHASE TRAUGHBER
chase@axisrealty.biz
940.891.2947

FOR SALE

NEQ I-35 & FM455

SANGER, TX 76266



AXIS
REALTY GROUP

212 South Elm St.
Denton, TX 76201
940.891.2947
axisrealty.biz

BRAD ANDRUS
brad@axisrealty.biz
940.891.2947

ALEX PAYNE
alex@axisrealty.biz
940.891.2947

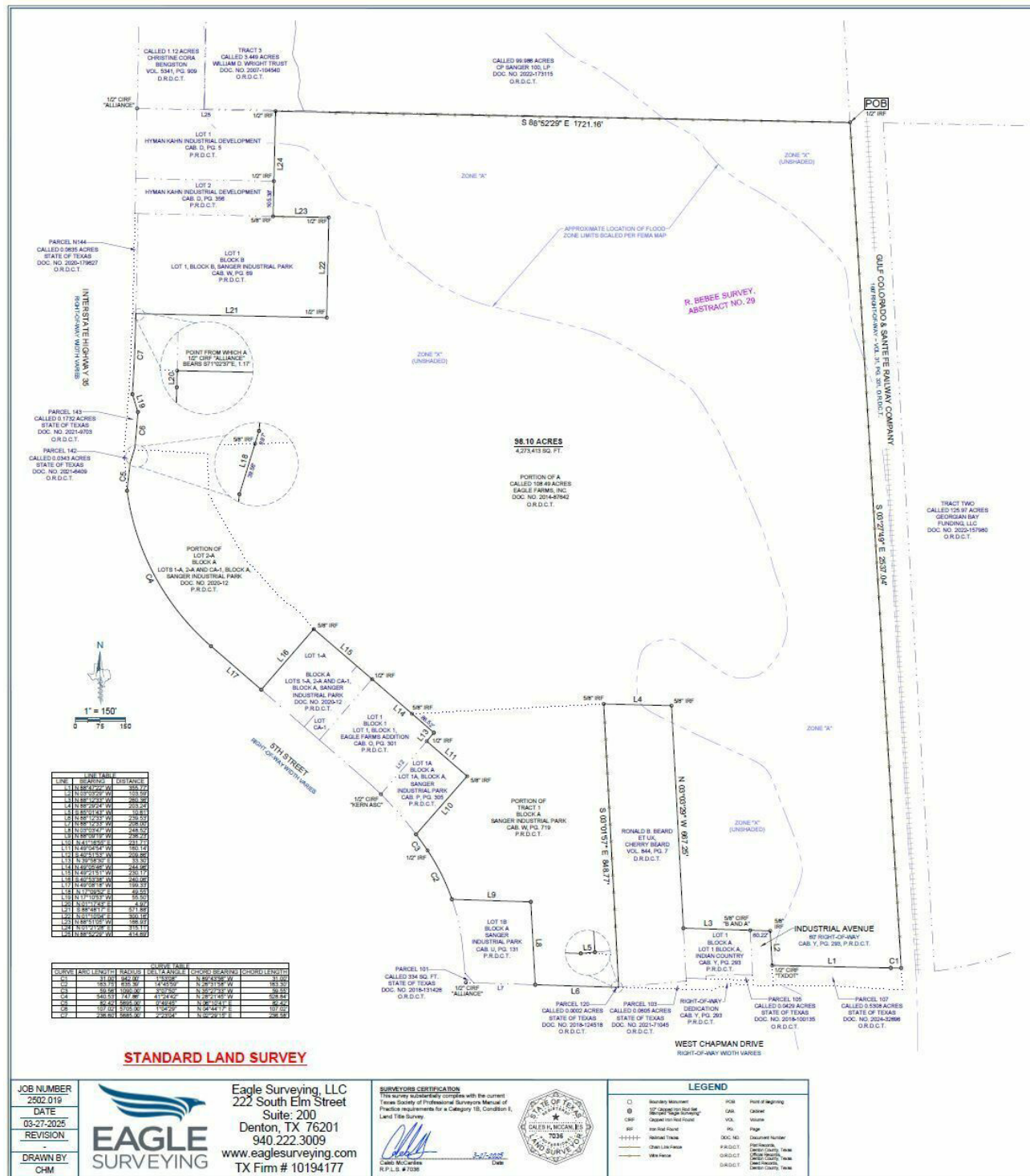
CHASE TRAUGHBER
chase@axisrealty.biz
940.891.2947

FOR SALE

NEQ I-35 & FM455

SANGER, TX 76266

SURVEY



AXIS
REALTY GROUP

212 South Elm St.
Denton, TX 76201
940.891.2947
axisrealty.biz

BRAD ANDRUS
brad@axisrealty.biz
940.891.2947

ALEX PAYNE
alex@axisrealty.biz
940.891.2947

CHASE TRAUGHBER
chase@axisrealty.biz
940.891.2947

FOR SALE

NEQ I-35 & FM455

SANGER, TX 76266

UTILITY MAP

— Sewer — Water — Abandoned in-Ground Sewer



AXIS
REALTY GROUP

212 South Elm St.
Denton, TX 76201
940.891.2947
axisrealty.biz

BRAD ANDRUS
brad@axisrealty.biz
940.891.2947

ALEX PAYNE
alex@axisrealty.biz
940.891.2947

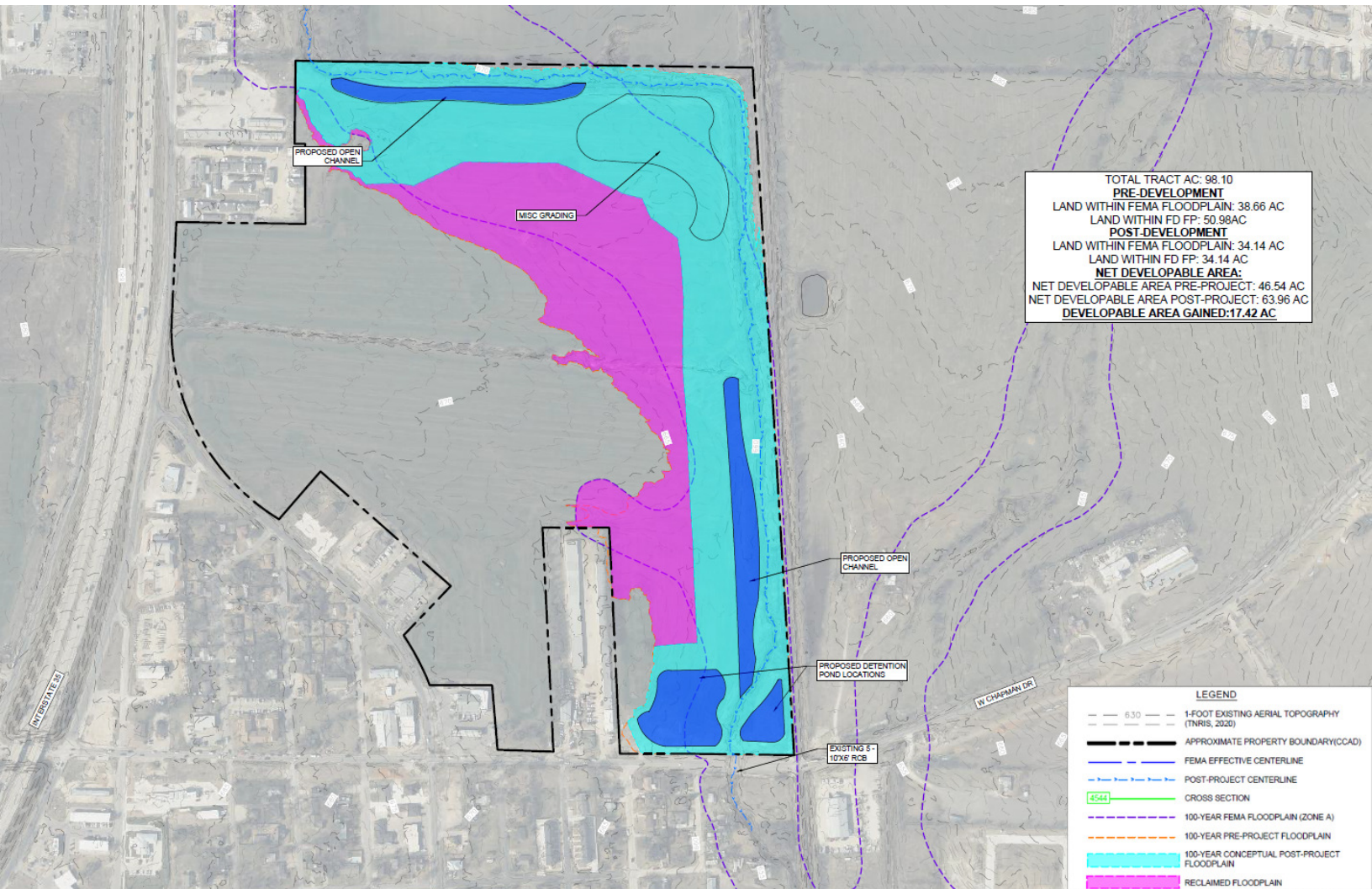
CHASE TRAUGHBER
chase@axisrealty.biz
940.891.2947

FOR SALE

NEQ I-35 & FM455

SANGER, TX 76266

FLOODPLAIN



AXIS
REALTY GROUP

212 South Elm St.
Denton, TX 76201
940.891.2947
axisrealty.biz

BRAD ANDRUS
brad@axisrealty.biz
940.891.2947

ALEX PAYNE
alex@axisrealty.biz
940.891.2947

CHASE TRAUGHBER
chase@axisrealty.biz
940.891.2947

PERMITTED USES - CITY OF SANGER ZONING ORDINANCE

| | CITY | | | | | | | | | | | URBAN DOWNTOWN | | | |
|--|------|----|----|----|----|----|-----|-----|----|----|---|----------------|-----|-----|----|
| | A | PD | RD | MD | TR | 2F | MFR | MHP | RC | NC | I | USF | UMF | UMU | UR |
| Greenhouse or Nursery (Commercial) | P | — | — | — | — | — | — | — | — | — | — | — | — | — | — |
| Hatchery, Poultry | P | — | — | — | — | — | — | — | — | — | — | — | — | — | — |
| Kennel | P | — | — | — | — | — | — | — | — | — | — | — | — | — | — |
| Farmer's Market | P | — | — | — | — | — | — | — | P | S | P | — | — | — | P |
| Commercial Type Uses | | | | | | | | | | | | | | | |
| Bakery and Confectionery (Wholesale) | — | — | — | — | — | — | — | — | P | — | P | — | — | — | — |
| Bottling Works | — | — | — | — | — | — | — | — | P | — | P | — | — | — | — |
| Building Material Sales | — | — | — | — | — | — | — | — | P | — | P | — | — | — | — |
| Cabinet or Upholstery Shop | — | — | — | — | — | — | — | — | P | — | P | — | — | — | — |
| Clothing, Similar Light | — | — | — | — | — | — | — | — | P | — | — | — | — | — | — |
| Manufacturing | — | — | — | — | — | — | — | — | — | — | P | — | — | — | — |
| Contractor Storage, Equipment Yard | — | — | — | — | — | — | — | — | P | — | P | — | — | — | — |
| Dyeing or Laundry Plant | — | — | — | — | — | — | — | — | — | — | P | — | — | — | — |
| Heavy Machinery Sales, Storage or Repair | — | — | — | — | — | — | — | — | P | — | P | — | — | — | — |
| Laboratory Manufacturing | — | — | — | — | — | — | — | — | — | — | P | — | — | — | — |
| Laboratory, Scientific or Research | — | — | — | — | — | — | — | — | — | — | P | — | — | — | — |
| Lithographic or Print Shop | — | — | — | — | — | — | — | — | P | — | P | — | — | — | — |
| Maintenance and Repair Service for Buildings | — | — | — | — | — | — | — | — | P | — | P | — | — | — | — |
| Milk Depot, Dairy or Ice Cream Plant | P | — | — | — | — | — | — | — | P | — | P | — | — | — | — |
| Paint Shop | — | — | — | — | — | — | — | — | P | — | P | — | — | — | — |
| Plumbing, Heating and Air Conditioning Shop | — | — | — | — | — | — | — | — | P | — | P | — | — | — | — |
| Storage Warehouse | — | — | — | — | — | — | — | — | P | — | P | — | — | — | — |
| Trailer or Mobile Home Sales or Rental | — | — | — | — | — | — | — | — | P | — | P | — | — | — | — |
| Welding or Machine Shop | — | — | — | — | — | — | — | — | — | — | P | — | — | — | — |
| Wholesale Storage and Sales | — | — | — | — | — | — | — | — | P | — | — | — | — | — | — |
| Natural Resources Storage | | | | | | | | | | | | | | | |
| Caliche Pit and Caliche Storage | S | — | — | — | — | — | — | — | — | — | P | — | — | — | — |
| Mining and Storage of Mining Waste | S | — | — | — | — | — | — | — | — | — | P | — | — | — | — |
| Petroleum Storage and Collection Facilities | S | — | — | — | — | — | — | — | — | — | P | — | — | — | — |



AXIS
REALTY GROUP

212 South Elm St.
Denton, TX 76201
940.891.2947
axisrealty.biz

BRAD ANDRUS
brad@axisrealty.biz
940.891.2947

ALEX PAYNE
alex@axisrealty.biz
940.891.2947

CHASE TRAUGHBER
chase@axisrealty.biz
940.891.2947

PERMITTED USES - CITY OF SANGER ZONING ORDINANCE

| | CITY | | | | | | | | | | | URBAN DOWNTOWN | | | |
|--|------|----|----|----|----|----|-----|-----|----|----|---|----------------|-----|-----|----|
| | A | PD | RD | MD | TR | 2F | MFR | MHP | RC | NC | I | USF | UMF | UMU | UR |
| Transportation Related Uses | | | | | | | | | | | | | | | |
| Airport or Landing Field | S | — | — | — | — | — | — | — | — | — | S | — | — | — | — |
| Bus Station or Terminal | — | — | — | — | — | — | — | — | P | — | — | — | — | — | — |
| Hauling or Storage Company | — | — | — | — | — | — | — | — | P | — | P | — | — | — | — |
| Heliport, Helistop | — | — | — | — | — | — | — | — | P | — | P | — | — | — | — |
| Motor Freight Terminal | — | — | — | — | — | — | — | — | P | — | P | — | — | — | — |
| Parking Lot, Commercial Auto | — | — | — | — | — | — | — | — | P | — | P | — | — | — | — |
| Parking Lot, Trucks and Trailers | — | — | — | — | — | — | — | — | P | — | P | — | — | — | — |
| Automobile and Related Service Uses | | | | | | | | | | | | | | | |
| Auto Glass, Seat Cover or Muffler Shop | — | — | — | — | — | — | — | — | P | — | P | — | — | — | — |
| Auto Laundry (Car Wash) | — | — | — | — | — | — | — | — | P | — | P | — | — | — | — |
| Auto Painting, Body Rebuilding Shop | — | — | — | — | — | — | — | — | P | — | P | — | — | — | — |
| Auto Parts and Accessory Sales (Indoors) | — | — | — | — | — | — | — | — | P | — | P | — | — | — | — |
| Auto Storage or Auto Auction | — | — | — | — | — | — | — | — | P | — | P | — | — | — | — |
| Gasoline Service Station | — | — | — | — | — | — | — | — | P | — | P | — | — | — | — |
| Motorcycle Sales and Repair | — | — | — | — | — | — | — | — | P | — | P | — | — | — | — |
| New or Used Auto Sales (Outdoor) | — | — | — | — | — | — | — | — | P | — | P | — | — | — | — |
| New or Used Auto Sales (Indoor) | — | — | — | — | — | — | — | — | P | — | P | — | — | — | — |
| Repair Garage | — | — | — | — | — | — | — | — | P | — | P | — | — | — | — |
| Retail and Related Service Uses | | | | | | | | | | | | | | | |
| Antique Shop | — | — | — | — | — | — | — | — | P | P | — | — | — | P | P |
| Art Supply Store | — | — | — | — | — | — | — | — | P | P | — | — | — | P | P |
| Bakery or Confectionery Shop (Retail) | — | — | — | — | — | — | — | — | P | P | — | — | — | P | P |
| Bank, Saving or Loan Office | — | — | — | — | — | — | — | — | P | P | — | — | — | P | P |
| Barber or Beauty Shop | — | — | — | — | — | — | — | — | P | P | — | — | — | — | P |
| Book or Stationary Shop or Newsstand | — | — | — | — | — | — | — | — | P | P | — | — | — | — | P |
| Cash Advance or Payday Loan Office* | — | — | — | — | — | — | — | — | S | — | — | — | — | — | — |



AXIS
REALTY GROUP

212 South Elm St.
Denton, TX 76201
940.891.2947
axisrealty.biz

BRAD ANDRUS
brad@axisrealty.biz
940.891.2947

ALEX PAYNE
alex@axisrealty.biz
940.891.2947

CHASE TRAUGHBER
chase@axisrealty.biz
940.891.2947

PERMITTED USES - CITY OF SANGER ZONING ORDINANCE

| | CITY | | | | | | | | | | | URBAN DOWNTOWN | | | |
|---|------|----|----|----|----|----|-----|-----|----|----|---|----------------|-----|-----|----|
| | A | PD | RD | MD | TR | 2F | MFR | MHP | RC | NC | I | USF | UMF | UMU | UR |
| Utility and Service Uses | | | | | | | | | | | | | | | |
| Electrical Energy Generating Plant | S | — | — | — | — | — | — | — | S | S | P | — | — | — | — |
| Electrical Substation, Bulk Power | S | — | — | — | — | — | — | — | S | S | P | — | — | — | — |
| Electrical Transmission Line (High Voltage) | S | S | S | S | S | S | S | S | S | S | S | S | S | S | S |
| Fire, Police or Municipal Building | P | P | P | P | P | P | P | P | P | P | P | P | P | P | P |
| Franchised Private Utility | S | — | — | — | — | — | — | — | — | — | P | — | — | — | — |
| Gas Line and Regulating Station | P | | | | | | | | | | | | | | |
| Local Utility Line | P | | | | | | | | | | | | | | |
| Public Building Shop or Yard of Govt. Agency | P | | | | | | | | | | | | | | |
| Radio, Television or Microwave Tower | S | S | S | S | S | S | S | S | S | S | S | S | S | S | S |
| Radio, Television or Microwave Transmitting Station | S | — | — | — | — | — | — | — | S | S | S | — | — | — | S |
| Sewage Treatment Plant | S | — | — | — | — | — | — | — | S | — | P | — | — | — | — |
| Telephone Business Office | — | — | — | — | — | — | — | — | P | — | P | — | — | — | S |
| Telephone Exch. Switching Relay Station | — | — | — | — | — | — | — | — | P | — | P | — | — | — | S |
| Utility Shops or Storage Yard or Building | P | — | — | — | — | — | — | — | P | — | P | — | — | — | — |
| Water Reservoir, Well or Pump Station | S | S | S | S | S | S | S | S | S | S | S | S | S | S | S |
| Water Standpipe or Elevated Water Storage | S | S | S | S | S | S | S | S | S | S | S | S | S | S | S |
| Water Treatment Plant | P | — | — | — | — | — | — | — | P | — | P | — | — | — | — |
| Recreational and Entertainment Uses | | | | | | | | | | | | | | | |
| Amusement, Commercial (Indoor) | — | — | — | — | — | — | — | — | P | P | — | — | — | — | P |
| Amusement, Commercial (Outdoor) | — | — | — | — | — | — | — | — | P | P | — | — | — | — | P |
| Carnival, Circus or Tent Service (Temporary) | — | — | — | — | — | — | — | — | — | — | — | — | — | — | — |
| Country Club (Private) | P | — | — | — | — | — | — | — | P | S | — | — | — | — | — |
| Day Camp for Children | — | — | — | — | — | — | — | — | P | P | — | — | — | — | P |



AXIS
REALTY GROUP

212 South Elm St.
Denton, TX 76201
940.891.2947
axisrealty.biz

BRAD ANDRUS
brad@axisrealty.biz
940.891.2947

ALEX PAYNE
alex@axisrealty.biz
940.891.2947

CHASE TRAUGHBER
chase@axisrealty.biz
940.891.2947

PERMITTED USES - CITY OF SANGER ZONING ORDINANCE

| | CITY | | | | | | | | | | | URBAN DOWNTOWN | | | |
|---|---|----|----|----|----|----|-----|-----|----|----|---|----------------|-----|-----|----|
| | A | PD | RD | MD | TR | 2F | MFR | MHP | RC | NC | I | USF | UMF | UMU | UR |
| Primary Residential Uses | | | | | | | | | | | | | | | |
| Single-Family Dwelling (attached) | P | P | P | P | P | P | — | — | — | — | — | P | — | — | — |
| Single-Family Dwelling (detached) | P | P | P | P | P | P | — | — | — | — | — | — | — | — | — |
| Two-Family Dwelling | — | — | — | — | — | P | P | P | — | — | — | S | — | — | — |
| Multiple-Family Dwelling | — | — | — | — | — | — | P | P | — | — | — | — | P | — | — |
| Boarding or Rooming Houses | — | — | — | — | — | — | — | — | P | P | — | — | — | — | P |
| Manufactured Home as a Fixed Dwelling | — | — | — | — | — | — | — | P | — | — | — | — | — | — | — |
| Manufactured Home Park | — | — | — | — | — | — | — | P | — | — | — | — | — | — | — |
| Manufactured Home Subdivision | — | — | — | — | — | — | — | P | — | — | — | — | — | — | — |
| Motel or Hotel | — | — | — | — | — | — | — | — | P | P | — | — | — | — | P |
| Secondary and Incidental Uses | | | | | | | | | | | | | | | |
| Secondary Building | P | P | P | P | — | P | P | P | — | — | — | P | P | — | P |
| Secondary Building (non-residential) | — | — | — | — | — | — | — | — | P | P | P | — | — | S | P |
| Secondary Building Farm | P | P | P | P | — | — | P | P | — | — | — | — | — | — | — |
| Customary Home Occupation | P | P | P | P | — | P | P | P | — | — | — | — | — | — | — |
| Off-Street Parking Incidental to Main Use | P | P | P | P | P | P | P | P | P | P | P | P | P | P | P |
| Stable (Private) | S | — | P | — | — | — | — | — | — | — | — | — | — | — | — |
| Swimming Pool as Home Occupation | P | — | S | S | — | — | S | S | — | — | — | S | S | — | — |
| Swimming Pool (Private) | P | — | P | P | — | — | P | P | — | — | — | P | P | — | — |
| Tennis Court (Private) | P | — | P | S | — | — | S | — | — | — | — | S | S | — | — |
| Temp. Field Office, Construction Yard or Office | Subject to temporary permit issued by building official | | | | | | | | | | | | | | |



AXIS
REALTY GROUP

212 South Elm St.
Denton, TX 76201
940.891.2947
axisrealty.biz

BRAD ANDRUS
brad@axisrealty.biz
940.891.2947

ALEX PAYNE
alex@axisrealty.biz
940.891.2947

CHASE TRAUGHBER
chase@axisrealty.biz
940.891.2947

PERMITTED USES - CITY OF SANGER ZONING ORDINANCE

| | CITY | | | | | | | | | | | URBAN DOWNTOWN | | | |
|---|------|----|----|----|----|----|-----|-----|----|----|---|----------------|-----|-----|----|
| | A | PD | RD | MD | TR | 2F | MFR | MHP | RC | NC | I | USF | UMF | UMU | UR |
| Drag Strip or Commercial Racing | — | — | — | — | — | — | — | — | P | — | — | — | — | — | — |
| Game Room | — | S | — | — | — | — | — | — | — | — | — | — | — | — | — |
| Golf Course, Commercial | — | — | — | — | — | — | — | — | P | — | — | — | — | — | — |
| Handball, Tennis, or Swim Club | — | — | — | — | — | — | — | — | — | — | — | — | — | — | — |
| Park or Playground | — | — | — | — | — | — | — | — | — | — | — | — | — | — | — |
| Playfield or Stadium (public) | — | — | — | — | — | — | — | — | — | — | — | — | — | — | — |
| Private Club | — | — | — | — | — | — | — | — | — | — | — | — | — | — | — |
| Rodeo Grounds | — | — | — | — | — | — | — | — | — | — | — | — | — | — | — |
| Roller or Ice Rinks | — | — | — | — | — | — | — | — | P | P | — | — | — | — | P |
| Swimming Pool (Commercial) | — | — | — | — | — | — | — | — | P | P | — | — | — | — | P |
| Theater or Playhouse (Indoor) | — | — | — | — | — | — | — | — | P | P | — | — | — | — | P |
| Theater (Outdoor) | P | — | — | — | — | — | — | — | P | P | — | — | — | — | P |
| Zoo (Private) | P | — | — | — | — | — | — | — | P | — | — | — | — | — | — |
| Zoo (Public) | P | — | — | — | — | — | — | — | P | — | — | — | — | — | — |
| Educational, Institutional, and Special Uses | | | | | | | | | | | | | | | |
| Art Gallery or Museum | P | — | — | — | — | — | — | — | P | S | P | — | — | — | P |
| Cemetery or Mausoleum | S | S | S | S | S | S | S | S | S | S | S | S | S | S | S |
| Church or Rectory | P | P | P | P | P | P | P | P | P | P | P | P | P | P | P |
| College or University | — | — | — | — | — | — | — | — | S | S | S | — | — | — | S |
| Community Center (Public) | S | S | S | S | S | S | S | S | S | S | — | S | S | S | S |
| Fairgrounds or Exhibit Area | P | — | — | — | — | — | — | — | S | — | S | — | — | — | — |
| Fraternal org. Lodge, Union Hall | — | — | — | — | — | — | — | — | P | P | — | — | — | — | P |
| Home for Aged Residence | — | — | — | — | — | — | S | — | — | — | — | — | S | — | — |
| Hospital, Acute Care | — | — | — | — | — | — | — | — | P | S | S | — | — | — | S |
| Hospital, Chronic Care | — | — | — | — | — | — | — | — | P | S | S | — | — | — | S |
| Institution for Alcohol, Narc or Psychiatric Care | — | — | — | — | — | — | — | — | S | — | S | — | — | — | S |
| Religious, Charitable or Philanthropic Institution | P | P | P | P | P | P | P | P | P | P | P | P | P | P | P |
| Kindergarten or Nursery School | — | P | P | P | P | P | P | P | P | P | — | P | P | — | P |
| School, Business | S | — | — | — | — | — | — | — | S | S | P | — | — | — | S |
| School, Commercial or Trade | S | — | — | — | — | — | — | — | S | S | P | — | — | — | S |
| School, Public or Private | P | P | P | P | P | P | P | P | P | P | — | P | P | — | P |



AXIS
REALTY GROUP

212 South Elm St.
Denton, TX 76201
940.891.2947
axisrealty.biz

BRAD ANDRUS
brad@axisrealty.biz
940.891.2947

ALEX PAYNE
alex@axisrealty.biz
940.891.2947

CHASE TRAUGHBER
chase@axisrealty.biz
940.891.2947

PERMITTED USES - CITY OF SANGER ZONING ORDINANCE

| | CITY | | | | | | | | | | | URBAN DOWNTOWN | | | |
|---|------|----|----|----|----|----|-----|-----|----|----|---|----------------|-----|-----|----|
| | A | PD | RD | MD | TR | 2F | MFR | MHP | RC | NC | I | USF | UMF | UMU | UR |
| Cleaning and Pressing, Pick-up Service | — | — | — | — | — | — | — | — | P | P | — | — | — | — | P |
| Cleaning Plant - Commercial | — | — | — | — | — | — | — | — | P | P | — | — | — | — | P |
| Convenience Store | — | — | — | — | — | — | — | — | P | P | P | — | — | — | P |
| Custom Personal Service Shop, excluding Tattoo Shop | — | — | — | — | — | — | — | — | P | P | — | — | — | — | P |
| Discount or Department Store | — | — | — | — | — | — | — | — | P | P | — | — | — | — | P |
| Drapery, Needlework, Weaving Shop | — | — | — | — | — | — | — | — | P | P | — | — | — | — | P |
| Drug Store Pharmacy | — | — | — | — | — | — | — | — | P | P | — | — | — | — | P |
| Florist or Garden Shop | — | — | — | — | — | — | — | — | P | P | — | — | — | — | P |
| Food and Beverage Sales Store | — | — | — | — | — | — | — | — | P | P | — | — | — | — | P |
| Food Truck or related service | P | S | — | — | — | — | — | — | P | S | P | S | S | S | P |
| Furniture or Appliance Store | — | — | — | — | — | — | — | — | P | P | — | — | — | — | P |
| Greenhouse, Plant Nursery (Retail) | — | — | — | — | — | — | — | — | P | P | — | — | — | — | P |
| Handcraft Shop and Art Objects Sales | — | — | — | — | — | — | — | — | P | P | — | — | — | — | P |
| Hardware Store or Hobby Shop | — | — | — | — | — | — | — | — | P | P | — | — | — | — | P |
| Household Appliance Service or Repair | — | — | — | — | — | — | — | — | P | P | — | — | — | — | P |
| Incidental and Secondary Retail Service Uses | — | — | — | — | — | — | — | — | P | P | — | — | — | — | P |
| Key Shop | — | — | — | — | — | — | — | — | P | P | — | — | — | — | P |
| Laboratory, Medical and Dental | — | — | — | — | — | — | — | — | P | P | — | — | — | — | P |
| Laundry and Cleaning (Self-Service) | — | — | — | — | — | — | — | — | P | P | — | — | — | — | P |
| Liquor Store | — | — | — | — | — | — | — | — | P | P | — | — | — | — | P |
| Medical Appliances, Fitting Sales or Rental | — | — | — | — | — | — | — | — | P | P | — | — | — | — | P |
| Modular Building Sales, Service and Rental | — | — | — | — | — | — | — | — | P | P | — | — | — | — | P |



AXIS
REALTY GROUP

212 South Elm St.
Denton, TX 76201
940.891.2947
axisrealty.biz

BRAD ANDRUS
brad@axisrealty.biz
940.891.2947

ALEX PAYNE
alex@axisrealty.biz
940.891.2947

CHASE TRAUGHBER
chase@axisrealty.biz
940.891.2947

PERMITTED USES - CITY OF SANGER ZONING ORDINANCE

| | CITY | | | | | | | | | | | URBAN DOWNTOWN | | | |
|--|------|----|----|----|----|----|-----|-----|----|----|---|----------------|-----|-----|----|
| | A | PD | RD | MD | TR | 2F | MFR | MHP | RC | NC | I | USF | UMF | UMU | UR |
| Mortuary or Funeral Home | — | — | — | — | — | — | — | — | P | P | — | — | — | — | P |
| Office, General Business or Professional | — | — | — | — | — | — | — | — | P | P | — | — | — | — | P |
| Office, Medical or Dental | — | — | — | — | — | — | — | — | P | P | — | — | — | — | P |
| Outside Display and Sales | — | — | — | — | — | — | — | — | P | P | — | — | — | — | P |
| Pawn Shop | — | — | — | — | — | — | — | — | P | P | — | — | — | — | P |
| Pet Shop | — | — | — | — | — | — | — | — | P | P | — | — | — | — | P |
| Quick Service Food and Beverage Shop | — | — | — | — | — | — | — | — | P | P | — | — | — | — | P |
| Restaurant or Cafeteria (Drive-In Service) | — | — | — | — | — | — | — | — | P | P | — | — | — | — | P |
| Restaurant or Cafeteria (No Drive-In) | — | — | — | — | — | — | — | — | P | P | — | — | — | — | P |
| Retail Shop, Apparel, Gift, Similar Items | — | — | — | — | — | — | — | — | P | P | — | — | — | — | P |
| Sexually Oriented Business | — | — | — | — | — | — | — | — | — | — | S | — | — | — | — |
| Studio, Decorator, Artist, Photographer | — | — | — | — | — | — | — | — | P | P | — | — | — | — | P |
| Tattoo Shop | — | — | — | — | — | — | — | — | S | S | S | — | — | — | S |
| Tavern | — | — | — | — | — | — | — | — | P | P | — | — | — | — | P |
| Tool Rental | — | — | — | — | — | — | — | — | P | P | — | — | — | — | P |
| Travel Bureau or Travel Consultant | — | — | — | — | — | — | — | — | P | P | — | — | — | — | P |
| Vape Shop or Smoke Shop | — | — | — | — | — | — | — | — | S* | S* | — | — | — | — | — |
| Variety Store or Similar Retail Shop | — | — | — | — | — | — | — | — | P | P | — | — | — | — | P |
| Studio, health, Reducing or Similar Service | — | — | — | — | — | — | — | — | P | P | — | — | — | — | P |
| Veterinarian, Office Only (No Animal Hospital) | — | — | — | — | — | — | — | — | P | P | — | — | — | — | P |
| Veterinarian Hospital (inside Pens only) | S | — | — | — | — | — | — | — | — | S | — | — | — | — | — |
| Veterinarian Hospital (outside Animal Pens) | S | — | — | — | — | — | — | — | P | — | — | — | — | — | — |
| Agricultural Type Uses | | | | | | | | | | | | | | | |
| Animal Feed Lot | P | — | — | — | — | — | — | — | — | — | — | — | — | — | — |
| Animal Pound (Public or Private) | P | — | — | — | — | — | — | — | — | — | — | — | — | — | — |
| Farm, Ranch, Garden or Orchard | P | — | — | — | — | — | — | — | — | — | — | — | — | — | — |
| Emu Farm | P | — | — | — | — | — | — | — | — | — | — | — | — | — | — |



AXIS
REALTY GROUP

212 South Elm St.
Denton, TX 76201
940.891.2947
axisrealty.biz

BRAD ANDRUS
brad@axisrealty.biz
940.891.2947

ALEX PAYNE
alex@axisrealty.biz
940.891.2947

CHASE TRAUGHBER
chase@axisrealty.biz
940.891.2947

PERMITTED USES - CITY OF SANGER ZONING ORDINANCE

| | CITY | | | | | | | | | | | URBAN DOWNTOWN | | | |
|---|------|----|----|----|----|----|-----|-----|----|----|---|----------------|-----|-----|----|
| | A | PD | RD | MD | TR | 2F | MFR | MHP | RC | NC | I | USF | UMF | UMU | UR |
| Sand Gravel Extraction or Storage | S | — | — | — | — | — | — | — | — | — | P | — | — | — | — |
| Topsoil, Earth or Stone Extraction or Storage | S | — | — | — | — | — | — | — | — | — | P | — | — | — | — |
| Special Industrial Processes | | | | | | | | | | | | | | | |
| Asphalt or Concrete Batching Plant (Perm) | — | — | — | — | — | — | — | — | — | — | — | — | — | — | — |
| Asphalt or Concrete Batching Plant (Temp) | S | S | S | S | S | S | S | S | S | S | S | — | — | — | — |
| Brick Kiln or Tile Plant | — | — | — | — | — | — | — | — | — | — | — | — | — | — | — |
| Sanitary Fill | — | — | — | — | — | — | — | — | — | — | — | — | — | — | — |
| Slaughter House of Meat Packing Plant | — | — | — | — | — | — | — | — | — | — | — | — | — | — | — |
| Smelter, Refinery or Chemical Plant | — | — | — | — | — | — | — | — | — | — | — | — | — | — | — |
| Any use which could create an environmental problem due to emissions, visual quality, odor, noise, hazard or similar factors | — | — | — | — | — | — | — | — | — | — | — | — | — | — | — |
| General Manufacturing and Industrial Uses | | | | | | | | | | | | | | | |
| See uses as listed in Article III, Section 13 and Article III, Section 15 of this ordinance | | | | | | | | | | | | | | | |
| * Refer to relevant zoning district regulations and descriptions of permitted uses for further information regarding this particular use. | | | | | | | | | | | | | | | |



AXIS
REALTY GROUP

212 South Elm St.
Denton, TX 76201
940.891.2947
axisrealty.biz

BRAD ANDRUS
brad@axisrealty.biz
940.891.2947

ALEX PAYNE
alex@axisrealty.biz
940.891.2947

CHASE TRAUGHBER
chase@axisrealty.biz
940.891.2947



Information About Brokerage Services

Texas law requires all real estate license holders to give the following information about brokerage services to prospective buyers, tenants, sellers and landlords.

11-2-2015



TYPES OF REAL ESTATE LICENSE HOLDERS:

- **A BROKER** is responsible for all brokerage activities, including acts performed by sales agents sponsored by the broker.
- **A SALES AGENT** must be sponsored by a broker and works with clients on behalf of the broker.

A BROKER'S MINIMUM DUTIES REQUIRED BY LAW (A client is the person or party that the broker represents):

- Put the interests of the client above all others, including the broker's own interests;
- Inform the client of any material information about the property or transaction received by the broker;
- Answer the client's questions and present any offer to or counter-offer from the client; and
- Treat all parties to a real estate transaction honestly and fairly.

A LICENSE HOLDER CAN REPRESENT A PARTY IN A REAL ESTATE TRANSACTION:

AS AGENT FOR OWNER (SELLER/LANDLORD): The broker becomes the property owner's agent through an agreement with the owner, usually in a written listing to sell or property management agreement. An owner's agent must perform the broker's minimum duties above and must inform the owner of any material information about the property or transaction known by the agent, including information disclosed to the agent or subagent by the buyer or buyer's agent.

AS AGENT FOR BUYER/TENANT: The broker becomes the buyer/tenant's agent by agreeing to represent the buyer, usually through a written representation agreement. A buyer's agent must perform the broker's minimum duties above and must inform the buyer of any material information about the property or transaction known by the agent, including information disclosed to the agent by the seller or seller's agent.

AS AGENT FOR BOTH - INTERMEDIARY: To act as an intermediary between the parties the broker must first obtain the written agreement of *each party* to the transaction. The written agreement must state who will pay the broker and, in conspicuous bold or underlined print, set forth the broker's obligations as an intermediary. A broker who acts as an intermediary:

- Must treat all parties to the transaction impartially and fairly;
- May, with the parties' written consent, appoint a different license holder associated with the broker to each party (owner and buyer) to communicate with, provide opinions and advice to, and carry out the instructions of each party to the transaction.
- Must not, unless specifically authorized in writing to do so by the party, disclose:
 - that the owner will accept a price less than the written asking price;
 - that the buyer/tenant will pay a price greater than the price submitted in a written offer; and
 - any confidential information or any other information that a party specifically instructs the broker in writing not to disclose, unless required to do so by law.

AS SUBAGENT: A license holder acts as a subagent when aiding a buyer in a transaction without an agreement to represent the buyer. A subagent can assist the buyer but does not represent the buyer and must place the interests of the owner first.

TO AVOID DISPUTES, ALL AGREEMENTS BETWEEN YOU AND A BROKER SHOULD BE IN WRITING AND CLEARLY ESTABLISH:

- The broker's duties and responsibilities to you, and your obligations under the representation agreement.
- Who will pay the broker for services provided to you, when payment will be made and how the payment will be calculated.

LICENSE HOLDER CONTACT INFORMATION: This notice is being provided for information purposes. It does not create an obligation for you to use the broker's services. Please acknowledge receipt of this notice below and retain a copy for your records.

| | | | |
|--|----------------------|----------------|----------------|
| _____ Licensed Broker /Broker Firm Name or Primary Assumed Business Name | _____ License No. | _____ Email | _____ Phone |
| _____ Designated Broker of Firm | _____ License No. | _____ Email | _____ Phone |
| _____ Licensed Supervisor of Sales Agent/ Associate | _____ License No. | _____ Email | _____ Phone |
| _____ Sales Agent/Associate's Name | _____ License No. | _____ Email | _____ Phone |

Buyer/Tenant/Seller/Landlord Initials

Date