

ASHLAND INDUSTRIAL PARK

ASHLAND, MO



FOR SALE

- PLATTED INDUSTRIAL LOTS AVAILABLE FOR SALE
- ASHLAND, MO - HEAVY INDUSTRIAL ZONING
- UTILITIES TO SITE
- ASHLAND INDUSTRIAL PARK LOCATED 1.5 MILES SOUTH OF COLUMBIA REGIONAL AIRPORT/HWY 63 ACCESS
- CURRENT AVAILABILITY:
 - LOT 1A - 2.69 ACRES: \$333,950
 - LOT 2A - 2.63 ACRES: \$326,500
 - LOT 3A - 2.58 ACRES: \$320,300
 - LOT 4A - 2.71 ACRES: \$336,435

FOR MORE INFORMATION PLEASE CONTACT

Jack L. Maher III

Broker-Officer

Mobile (573) 489-6860

FAX (815) 550-1506

Email: maher3@jlmproperties.com

Buttonwood Business Center
3610 Buttonwood Dr. Suite 200
Columbia, MO 65201



MAHER

COMMERCIAL REAL ESTATE

The information contained herein is for illustration only - dimensions are approximate only.
This information is not to be reproduced or used for construction or permitting. The information contained within this brochure is believed to be accurate as of the date of input, however, JLM Properties, Inc., assumes no responsibility for the accuracy of the information provided.

WWW.MAHERCRE.COM

ASHLAND INDUSTRIAL PARK ASHLAND, MO



FOR MORE INFORMATION PLEASE CONTACT

Jack L. Maher III

Broker-Officer

Mobile (573) 489-6860

FAX (815) 550-1506

Email: maher3@jlmproperties.com

Buttonwood Business Center
3610 Buttonwood Dr. Suite 200
Columbia, MO 65201



MAHER

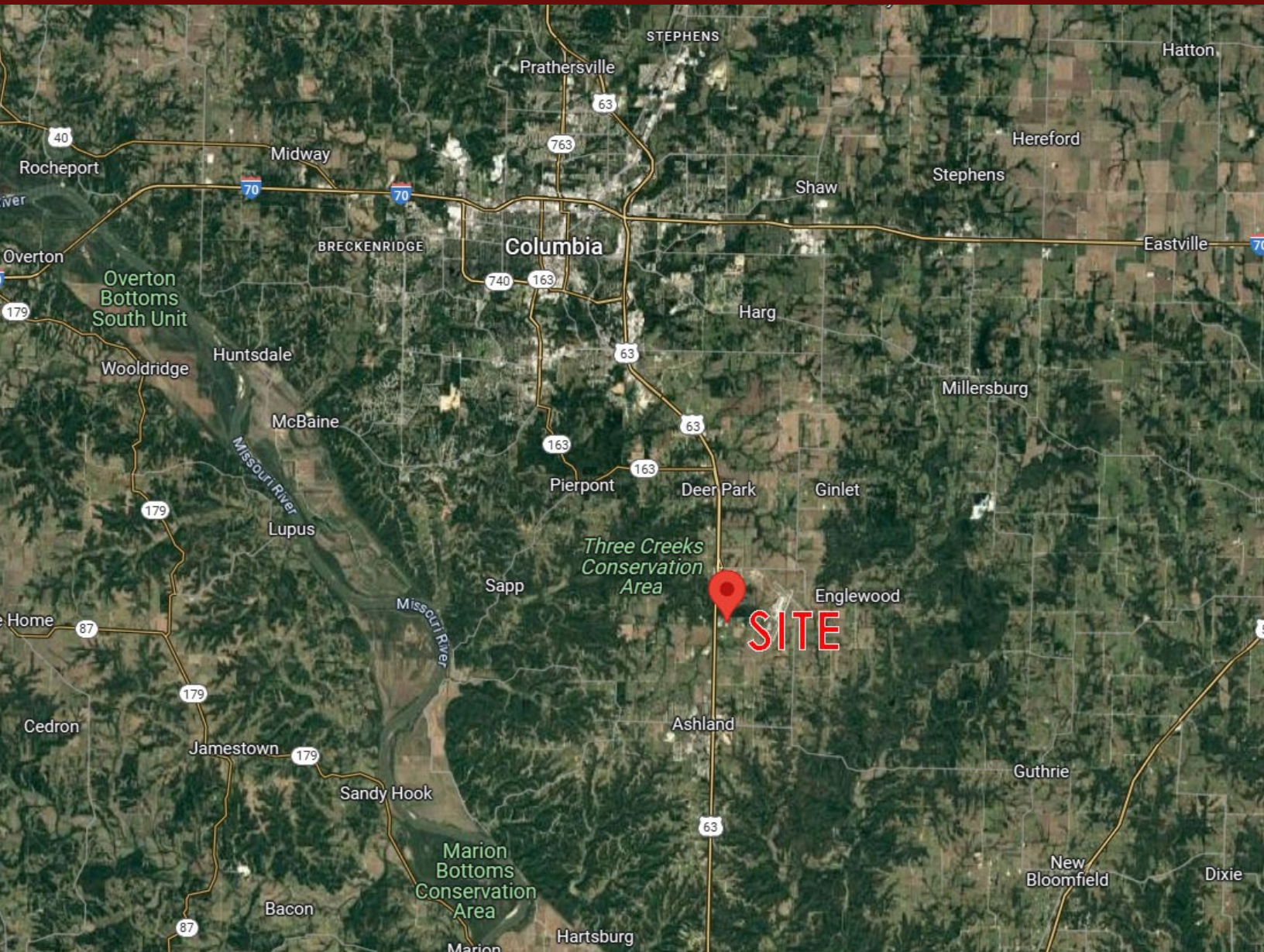
COMMERCIAL REAL ESTATE

The information contained herein is for illustration only - dimensions are approximate only.
This information is not to be reproduced or used for construction or permitting. The information contained within this brochure is believed to be accurate as of the date of input, however, JLM Properties, Inc., assumes no responsibility for the accuracy of the information provided.

WWW.MAHERCRE.COM

ASHLAND INDUSTRIAL PARK

ASHLAND, MO



FOR MORE INFORMATION PLEASE CONTACT

Jack L. Maher III

Broker-Officer

Mobile (573) 489-6860

FAX (815) 550-1506

Email: maher3@jlmproperties.com

Buttonwood Business Center
3610 Buttonwood Dr. Suite 200
Columbia, MO 65201



MAHER

COMMERCIAL REAL ESTATE

The information contained herein is for illustration only - dimensions are approximate only.
This information is not to be reproduced or used for construction or permitting. The information contained within this brochure is believed to be accurate as of the date of input, however, JLM Properties, Inc., assumes no responsibility for the accuracy of the information provided.

WWW.MAHERCRE.COM

ASHLAND INDUSTRIAL PARK

ASHLAND, MO



FOR MORE INFORMATION PLEASE CONTACT

Jack L. Maher III

Broker-Officer

Mobile (573) 489-6860

FAX (815) 550-1506

Email: maher3@jlmproperties.com

**Buttonwood Business Center
3610 Buttonwood Dr. Suite 200
Columbia, MO 65201**



MAHER

COMMERCIAL REAL ESTATE

The information contained herein is for illustration only - dimensions are approximate only.
This information is not to be reproduced or used for construction or permitting. The information contained within this brochure is believed to be accurate as of the date of input, however, JLM Properties, Inc., assumes no responsibility for the accuracy of the information provided.

WWW.MAHERCRE.COM

ASHLAND INDUSTRIAL PARK ASHLAND, MO



FOR MORE INFORMATION PLEASE CONTACT

Jack L. Maher III

Broker-Officer

Mobile (573) 489-6860

FAX (815) 550-1506

Email: maher3@jlmproperties.com

**Buttonwood Business Center
3610 Buttonwood Dr. Suite 200
Columbia, MO 65201**



MAHER

COMMERCIAL REAL ESTATE

The information contained herein is for illustration only - dimensions are approximate only.
This information is not to be reproduced or used for construction or permitting. The information contained within this brochure is believed to be accurate as of the date of input, however, JLM Properties, Inc., assumes no responsibility for the accuracy of the information provided.

WWW.MAHERCRE.COM