



OFFICE
AVAILABLE

5th Avenue S

Maple Street

OLD MILL TOWN

201 5th Avenue S | Edmonds, WA

Jack Rosen

425.289.2221

jack@rosenharbottle.com

PO Box 5003
Bellevue, WA 98009 - 5003



ROSEN HARBOTTLE
COMMERCIAL REAL ESTATE



LOCATED IN HISTORIC DOWNTOWN EDMONDS

SECOND LEVEL OFFICE SUITES

363 - 2,699 SF Available



LOCATION DETAILS:

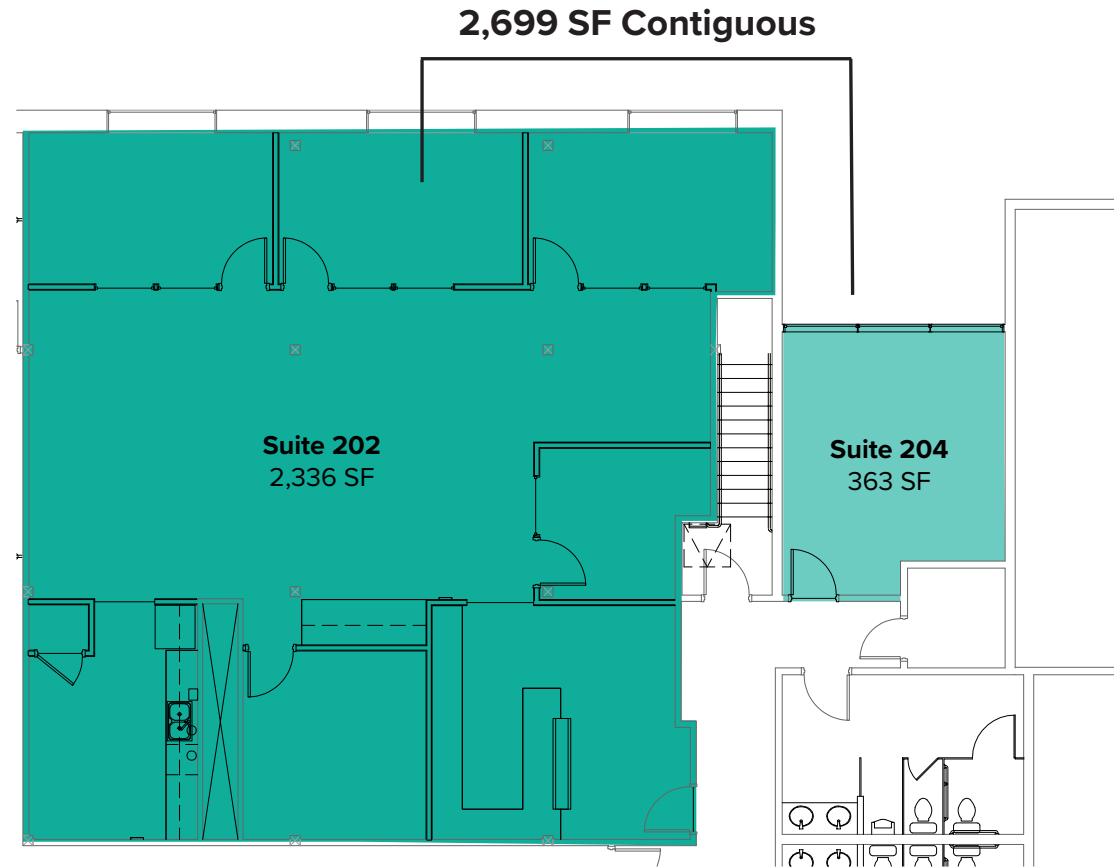
- Shared Space with Hazel Miller Plaza
- Exterior Building Signage Available
- Located in Historic Downtown Edmonds
- Minutes from Edmonds/Kingston Ferry
- Many Nearby Amenities
- Walkability Score of 91

The information provided herein has been obtained from sources believed to be reliable, but no representation or warranty, express or implied, is made with respect to the accuracy or completeness of any such information. Each prospective buyer or tenant should independently investigate, evaluate and verify all information provided herein and any other matters deemed material. Please consult your attorney, tax advisor or other professional advisor. The terms of sale or lease set forth herein are subject to change or withdrawal at any time and without notice.

SECOND FLOOR PLAN

SUITE 202 & 204 FEATURES:

- **Available 12/1/26**
- 363 SF - 2,699 SF Contiguous
- \$30.00/SF, NNN
- Updated office space with 5 POs, breakroom/kitchen, open work space and reception area
- Parking Included
- Exterior Building Signage Available
- Walking distance to many restaurants and amenities



LOCATION MAP

