

**COFFIN & McLEAN ASSOC., INC.**

Professional Land Surveying  
 3573 Commercial Way  
 P.O. Box 5145 Suite C  
 Spring Hill, FL 34606-5145  
 (904) 683-5993

CERTIFIED TO:

PHILIP MAZZUCO

FOR: ROYAL COACHMAN HOMES  
 DESCRIPTION:  
 SEE REVERSE SIDE FOR LEGAL.

Work Order: **89-640**  
 DATE: **5-24-89**

Party Chief: **L. COFFIN**  
 Drawn By: **K. SIKES**  
 Checked By: **L. COFFIN**

SECTION: **4** TOWNSHIP: **24S** RANGE: **18E**

\*NOTE: 1) SEE LEGEND ON REVERSE SIDE.  
 2) CONTACT PASTA COUNTY FOR  
 FLOOD ZONE INFORMATION.

SW-SOUTHWEST	E-EAST	R-W=RIGHT-OF-WAY	LEGEND	IRON ROD NUMBER
SE-SOUTHEAST	N-NORTH	P=FIELD MEASURED	●=FOUND	IRON ROD NUMBER
NW-NORTHWEST	S-SOUTH	T=CABLE TELEVISION BOX	○=SET 1/2" IRON ROD NUMBER LA 5232	IRON ROD NUMBER LA 5232
NE-NORTHEAST	W-WEST	R=DEED OR PLAT RECORD	△=FOUND CONTROL POINT NUMBER	IRON ROD NUMBER
●=FOUND	C=CONCRETE MONUMENT NUMBER	I=TELEPHONE BOX	□=SET 4x4 CONCRETE MONUMENT NUMBER LS 3892	IRON ROD NUMBER LS 3892
CERTIFICATE I hereby certify that the survey represented hereon meets the requirements of Chapter 21 HH-6, Florida Administrative Code, for professional land surveyors. Surveyor's Note: No visible encroachments except as shown. Surveyor: <b>James W. Coffin</b> Florida Registration # 3882				
NOT VALID UNLESS EMBOSSED WITH SURVEYOR'S SEAL				
NOTE: SUBJECT TO SETBACKS, EASEMENTS AND OTHER RESTRICTIONS OF RECORD				

UNPLATTED LAND

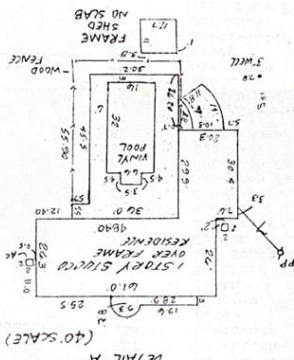
SCALE 1"=100'

N 00° 09' 19" W 1279.37'

1279.37'

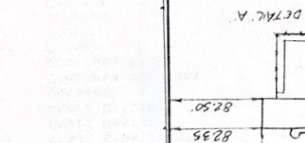
9.71 ACRES

N 89° 47' 26" W 350.66'  
 FOUND 3X3 CM NO # SOUTH LINE  
 FOUND 3X3 CM NO # NE 1/4 SOUTH LINE  
 UNPLATTED LAND  
 4'17' EAST  
 4'17' NORTH



UNPLATTED LAND

1279.37'



N 00° 09' 19" W 1279.37'  
 NORTH LINE NE 1/4  
 COUNTY LINE ROAD  
 FOUND 3X3 CM NO # SOUTH LINE  
 FOUND 3X3 CM NO # NE 1/4 SOUTH LINE  
 589° 47' 39" E 350.47'  
 350.47' (BASIS FOR BEARINGS)  
 589° 47' 39" E 350.47'  
 0.53' EAST  
 4'17' SOUTH  
 CORNER NOT SET  
 CORNER FALLS AT FENCE CORNER  
 24' PAVEMENT  
 86.80'  
 86.20'  
 82.50'  
 40'  
 SET 4x4x4 CONCRETE MONUMENT NUMBER LA 5232  
 40' OFFSET TO FRONT  
 FOUND 3X3 CM NO # NE 1/4 CORNER  
 4'17' SOUTH  
 FOUND 3X3 CM NO # SOUTH LINE