

7 Galaxy Way, Woodstock, IL

FOR SALE: 1.84 Acres of Land



Lake Shore Business Park

Prime Industrial Development Site in Enterprise Zone

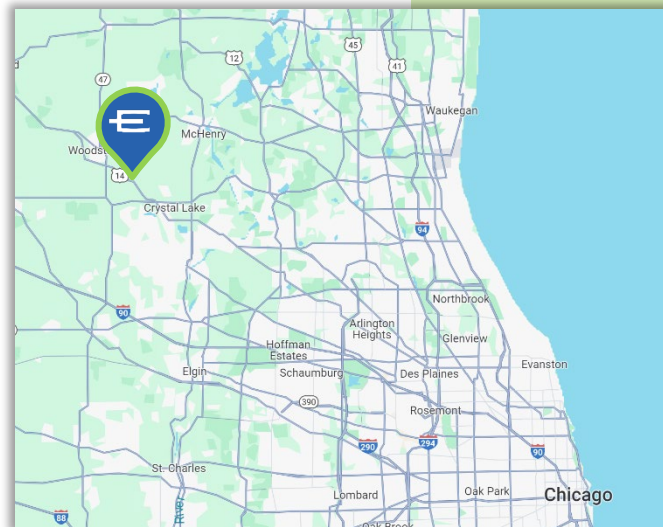
- Premier development site in a business park setting
- Utilities to site. Graded lot with offsite retention.
- Potential industrial, office or commercial development site
- Attractive M-1 zoning that allows for many use types
- Can accommodate 10,000 – 17,000 SF building
- Located in [McHenry County Enterprise Zone](#) – offers significant development incentives and cost savings

AVAILABLE: 1.84 Acres

ZONING: M-1

PIN: 13-22-104-001

SALE PRICE: \$189,000 (\$2.36 PSF)



SCAN/CLICK FOR
MAP



ENTRE
Commercial Realty LLC

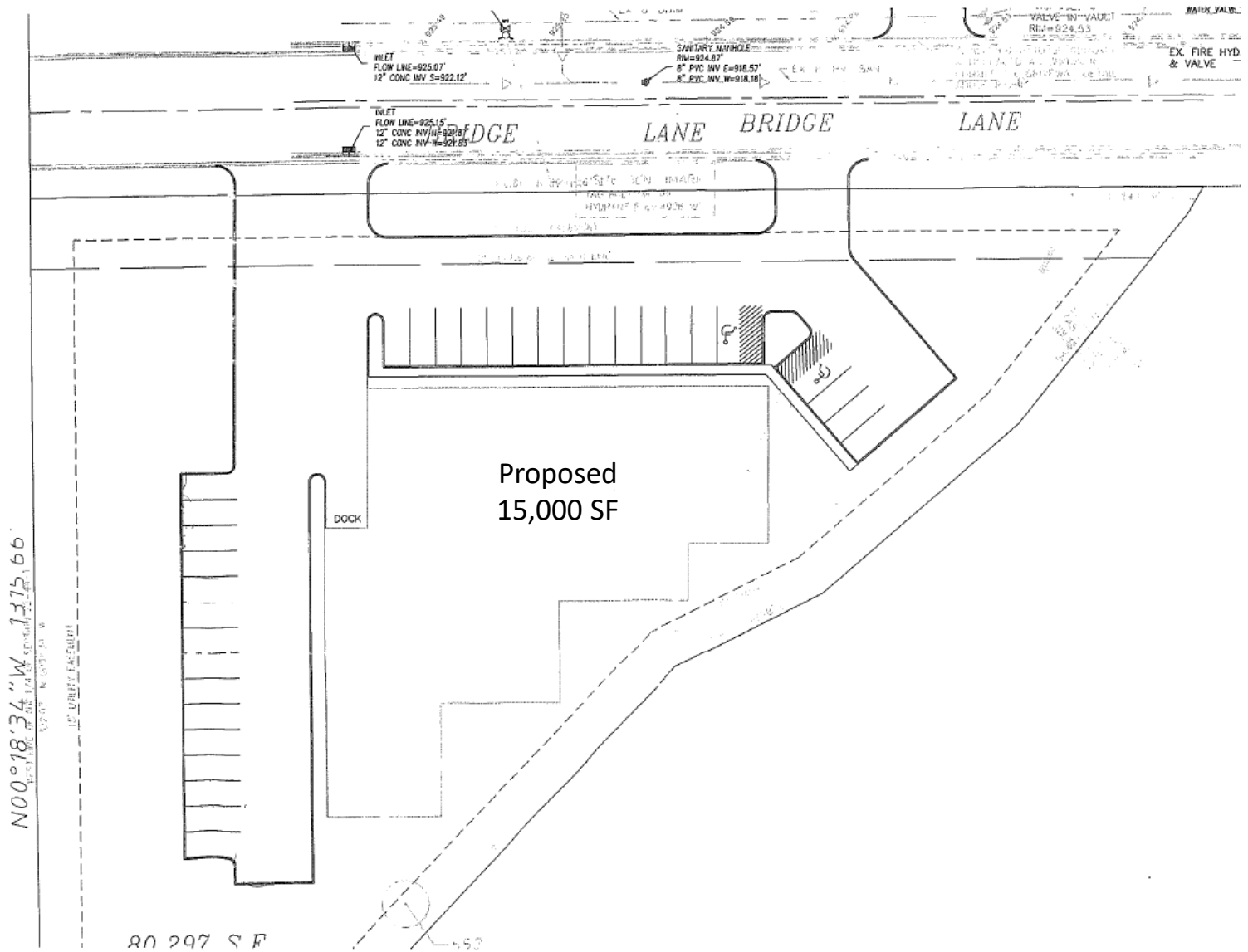
Sam Deihls
847-714-3324
sdeihls@entrecmercial.com

John M. Joyce
847-612-0464
jjoyce@entrecmercial.com

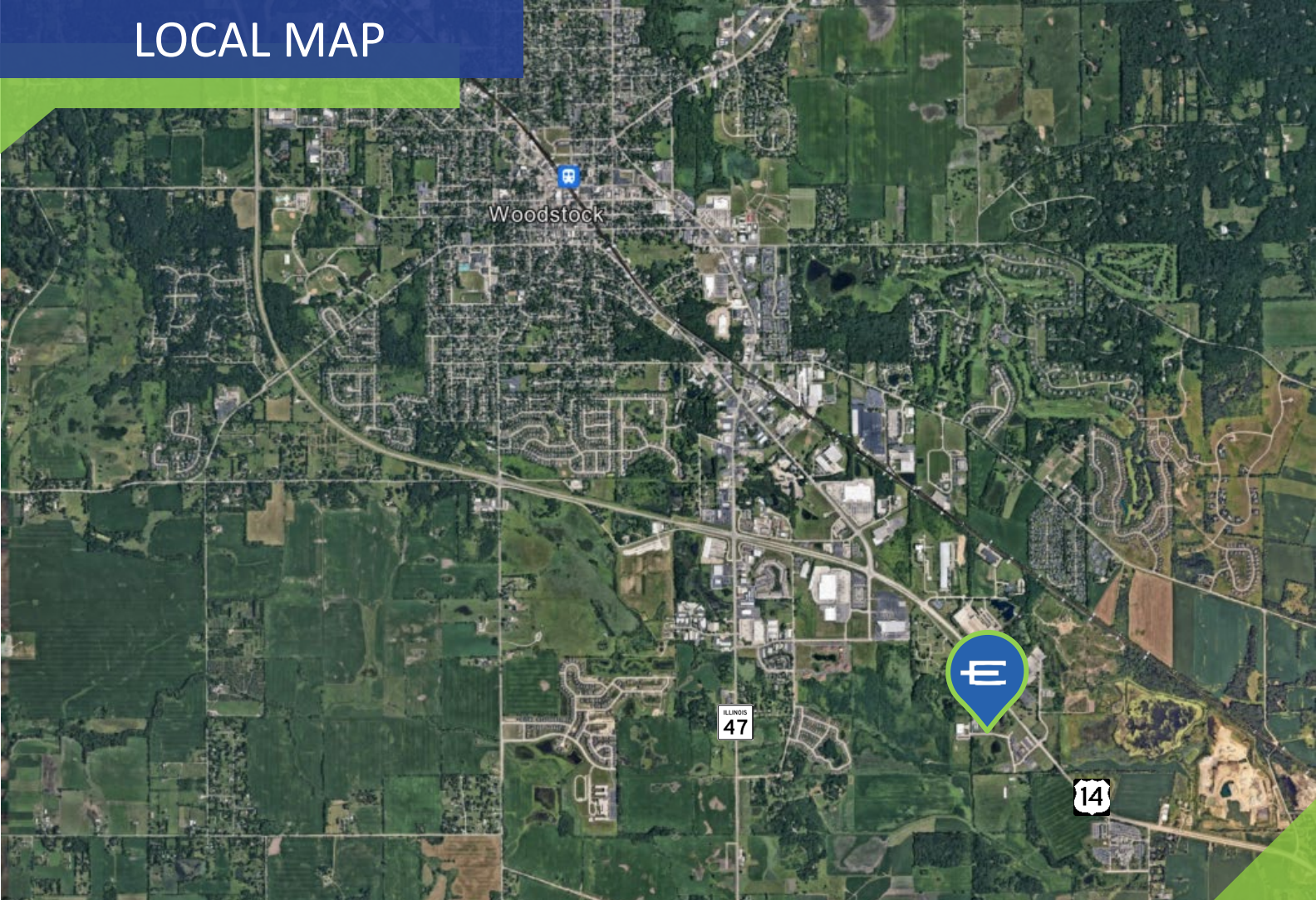
PHOTOS



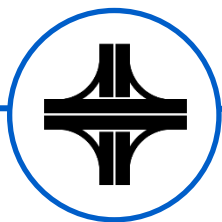
SITE PLAN



LOCAL MAP



SCAN FOR MAP VIEW



Near US 14 and Route 47



**McHenry County
Enterprise Zone**



**Premier Business Park
Setting**

ENTRE
Commercial Realty LLC

Sam Deihs
224-202-6290
sdeihs@entrecommercial.com

John M. Joyce
847-612-0464
jjoyce@entrecommercial.com

www.entrecommercial.com | 3550 Salt Creek Lane, Suite 104, Arlington Heights, IL 60005

The information contained herein is from sources deemed reliable but is submitted subject to errors, omissions and to change of price or terms without notice.