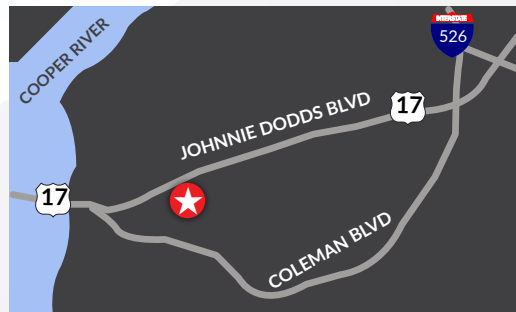




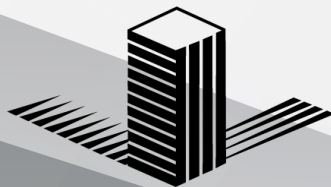
5,727 SF STANDALONE RESTAURANT **FOR SALE OR LEASE**

**341 JOHNNIE DODDS BLVD.
MT. PLEASANT SC 29464**



Exclusive opportunity to purchase a large, standalone restaurant building in this highly desirable Mount Pleasant location. This building is in fantastic condition with several big enhancements made in the last two years - a new roof, new electrical and panels throughout, new insulation and HVAC. The building boasts high visibility from Highway 17 and has a built-in marquee ready for your business' name for all of Mount Pleasant to see. There is ample parking, an ideal outdoor patio and bar area and boasts over 5,727 SF of interior dining space. All furniture, fixtures and equipment are negotiable with a walk-in refrigerator and freezer that will stay. This property could be your next flagship location!

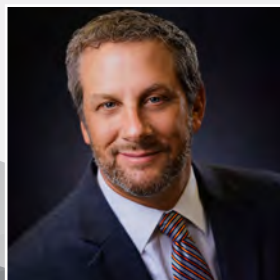
****Click Here for S.C. Agency Relationships Disclosure**



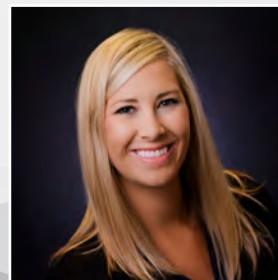
LANDMARK
ENTERPRISES

COMMERCIAL REAL ESTATE

www.landmark-enterprises.com



Jon Chalfie
VP of Brokerage
843.345.6000



Hailey Clifton
Associate
843.300.5209



Kesun Lee
Associate
301.318.7217

*We obtained the information above from sources we believe to be reliable. However, we have not verified its accuracy and make no guarantee, warranty or representation about it. It is submitted subject to the possibility of errors, omissions, change of price, rental or other conditions, prior sale, lease or financing, or withdrawal without notice. We include projections, opinions, assumptions or estimates for example only, and they may not represent current or future performance of the property. You and your tax and legal advisors should conduct your own investigation of the property and transaction.

5,727 SF STANDALONE RESTAURANT FOR SALE OR LEASE

OFFERING SUMMARY

PROPERTY ADDRESS:
341 Johnnie Dodds Blvd.
Mt. Pleasant SC 29464

TMS #: 571-00-00-064

COUNTY: Charleston

SALE PRICE: \$4,785,000



341 JOHNNIE DODDS BLVD | MT. PLEASANT, SC 29464



LANDMARK
ENTERPRISES
COMMERCIAL REAL ESTATE

5,727 SF STANDALONE RESTAURANT FOR SALE OR LEASE



341 JOHNNIE DODDS BLVD | MT. PLEASANT, SC 29464



LANDMARK
ENTERPRISES
COMMERCIAL REAL ESTATE

www.landmark-enterprises.com

5,727 SF STANDALONE RESTAURANT FOR SALE OR LEASE



341 JOHNNIE DODDS BLVD | MT. PLEASANT, SC 29464



LANDMARK
ENTERPRISES
COMMERCIAL REAL ESTATE

www.landmark-enterprises.com

5,727 SF STANDALONE RESTAURANT FOR SALE OR LEASE



341 JOHNNIE DODDS BLVD | MT. PLEASANT, SC 29464

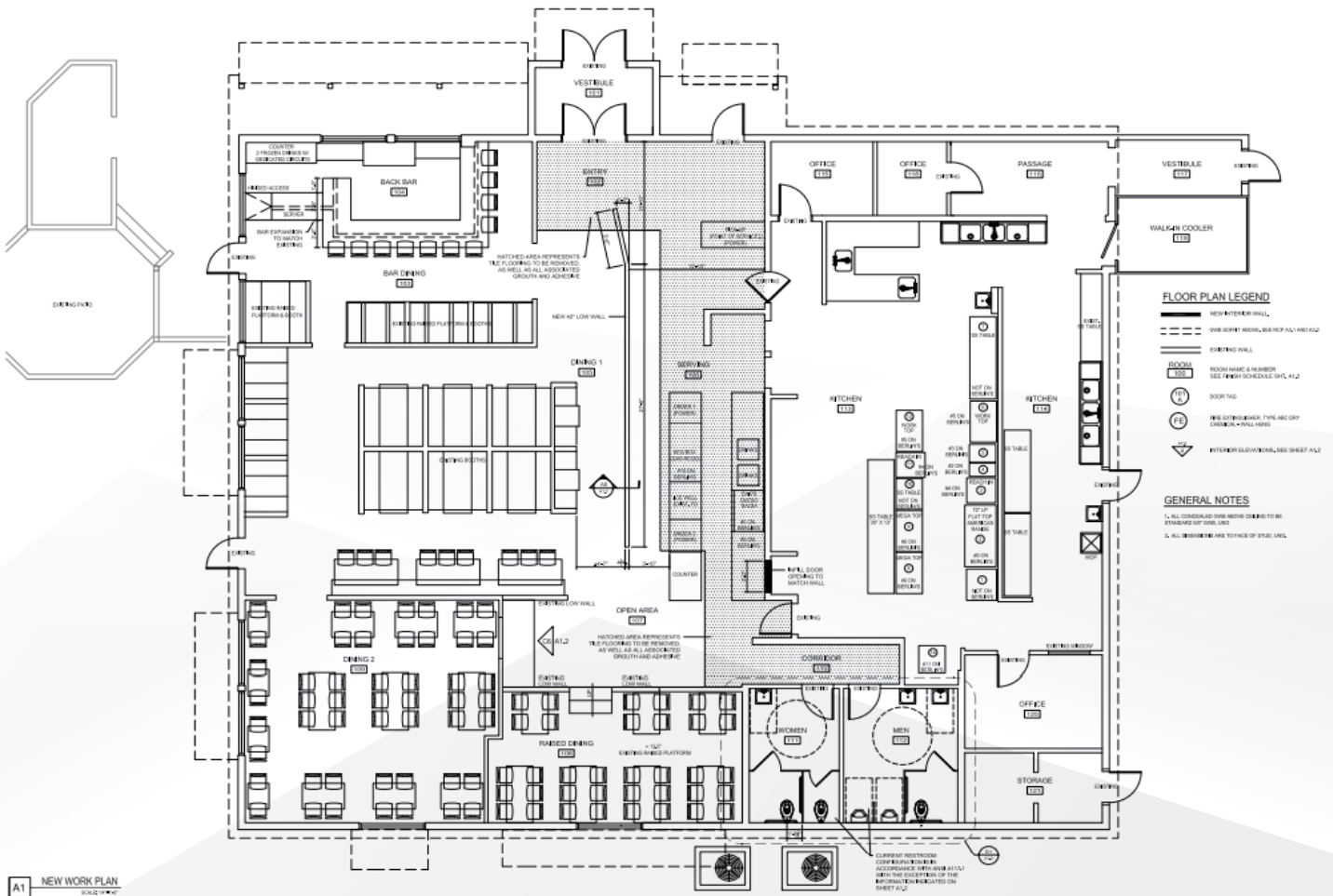


LANDMARK
ENTERPRISES
COMMERCIAL REAL ESTATE

www.landmark-enterprises.com

5,727 SF STANDALONE RESTAURANT FOR SALE OR LEASE

FLOOR PLAN



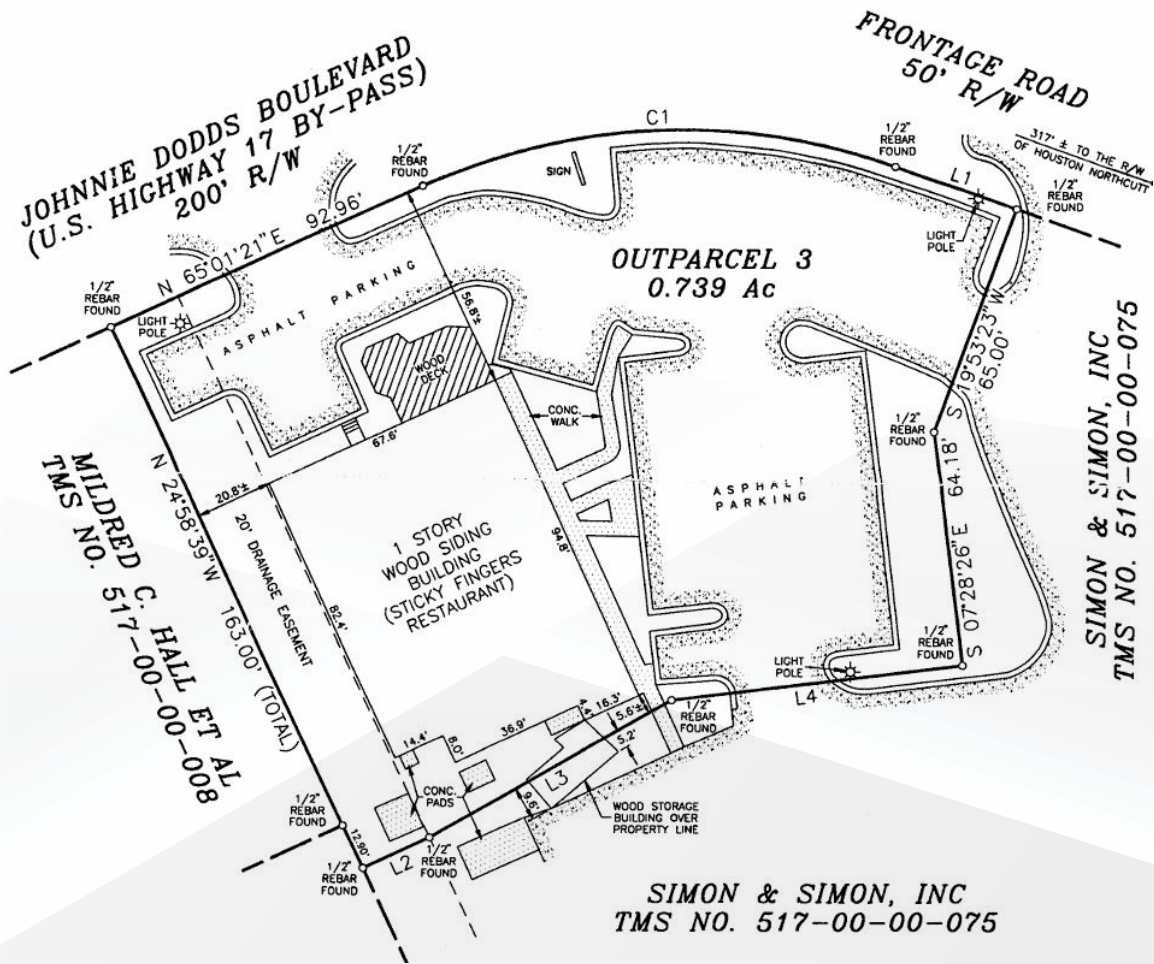
341 JOHNNIE DODDS BLVD | MT. PLEASANT, SC 29464



LANDMARK
ENTERPRISES
COMMERCIAL REAL ESTATE

5,727 SF STANDALONE RESTAURANT FOR SALE OR LEASE

PROPERTY PLAT



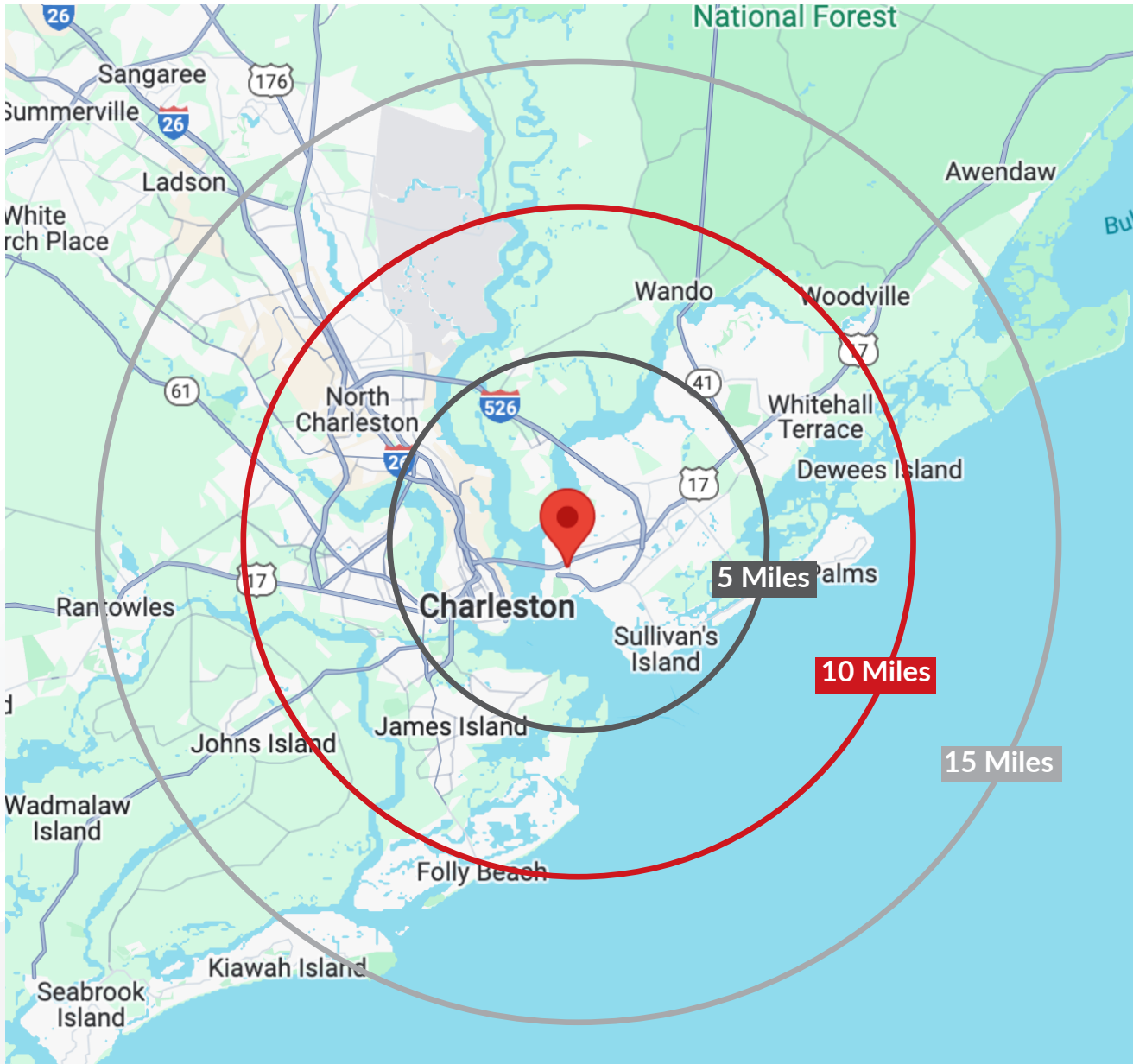
341 JOHNNIE DODDS BLVD | MT. PLEASANT, SC 29464



LANDMARK
ENTERPRISES
COMMERCIAL REAL ESTATE

5,727 SF STANDALONE RESTAURANT FOR SALE OR LEASE

DISTANCE MAP



341 JOHNNIE DODDS BLVD | MT. PLEASANT, SC 29464



LANDMARK
ENTERPRISES
COMMERCIAL REAL ESTATE

5,727 SF STANDALONE RESTAURANT FOR SALE OR LEASE

AERIAL MAP



341 JOHNNIE DODDS BLVD | MT. PLEASANT, SC 29464



LANDMARK
ENTERPRISES
COMMERCIAL REAL ESTATE

www.landmark-enterprises.com