



514 Teague Street

Greensboro, North Carolina 27406

Property Highlights

- ±6,225 SF Clear Span
- Zoned: Light Industrial
- Ceiling Height: 18' Eave, 20' Ridge
- HVAC: Cooled & Heated
- Docks: (1) 8' x 8' Drive In
- (1) 9' x 10' Dock Door with Leveler
- Construction: Metal, Brick & LED Warehouse Lighting
- Three Restrooms
- Just off of Business I-85 and Randleman Road

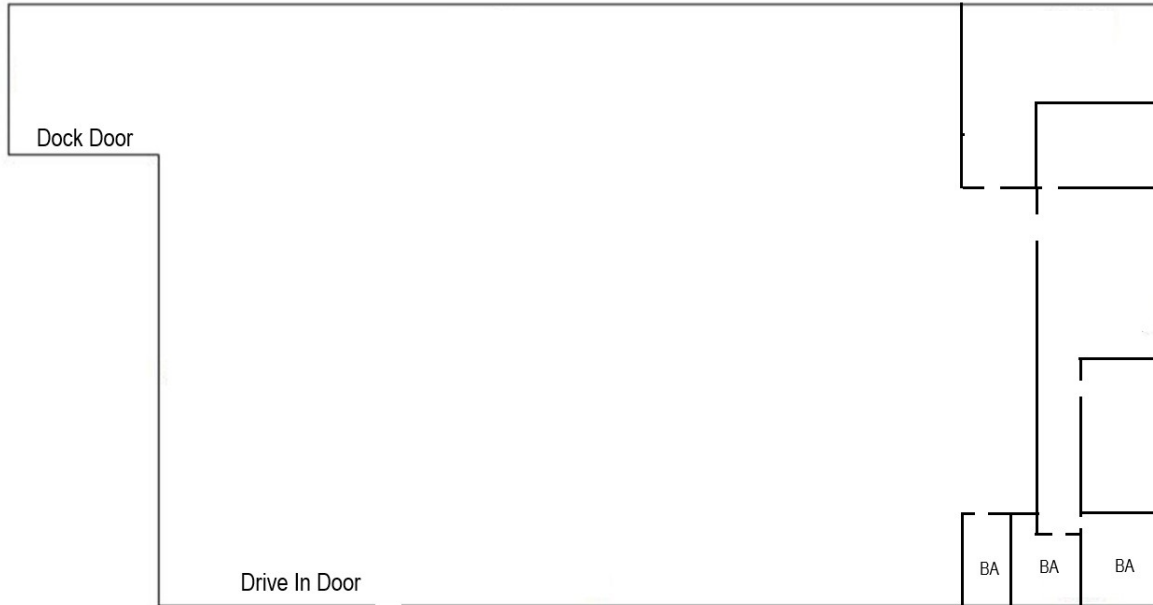


Available SF:	6,225 SF
Lot Size:	0.46 Acres

For More Information

Ben Sturgill
336 358 3229
bsturgill@naipt.com





We obtained the information above from sources we believe to be reliable. However, we have not verified its accuracy and make no guarantee, warranty or representation about it. It is submitted subject to the possibility of errors, omissions, change of price, rental or other conditions, prior sale, lease or financing, or withdrawal without notice. We include projections, opinions, assumptions or estimates for example only, and they may not represent current or future performance of the property. You and your tax and legal advisors should conduct your own investigation of the property and transaction.

348 N Elm Street
 Greensboro, NC 27401
 336 373 0995 tel
naipt.com