

FOR LEASE ±54,340 SQ. FT. INDUSTRIAL BUILDING

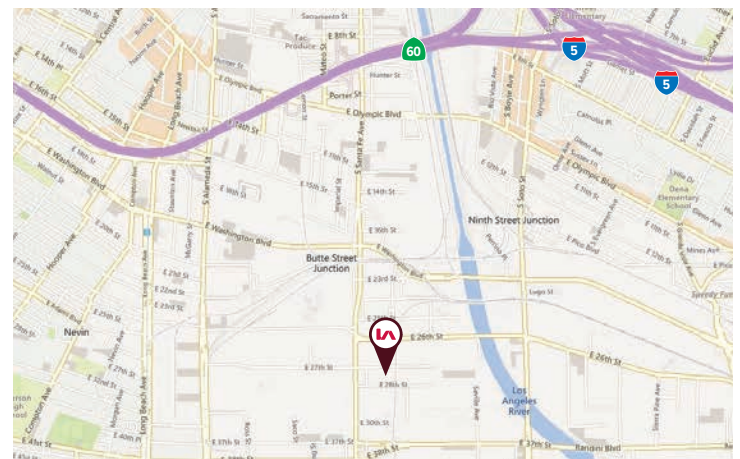
LEE & ASSOCIATES
COMMERCIAL REAL ESTATE SERVICES

2454 E 27TH ST, VERNON, CA 90058



PROPERTY HIGHLIGHTS

- Prime North Vernon Location (1.56 Miles from Arts District)
- Excellent Access to 10, 5 & 60 Freeways
- 16' - 20' Clearance
- Six (6) Dock High Loading Positions
- 65' Truck Well
- Power: 400A @ 240/480V
- Tilt Wall Construction
- 21 Car Parking Spaces
- ±4,836 SF of Office Space



ASKING RATE

\$1.00/PSF Gross (\$54,340/mo)

FOR MORE INFORMATION, PLEASE CONTACT

JEFFREY RINKOV

CEO | LIC NO 01238887

jrinkov@lee-associates.com

213.400.7941

SAM RINKOV

LIC NO 02132512

srinkov@lee-associates.com

818.324.4329

ETHAN RINKOV

LIC NO 02253349

erinkov@lee-associates.com

818.325.5175

LEE & ASSOCIATES
COMMERCIAL REAL ESTATE SERVICES

Lee & Associates | Los Angeles Central
CORP ID 01125429

5675 Telegraph Rd, Ste 300
Los Angeles, CA 90040

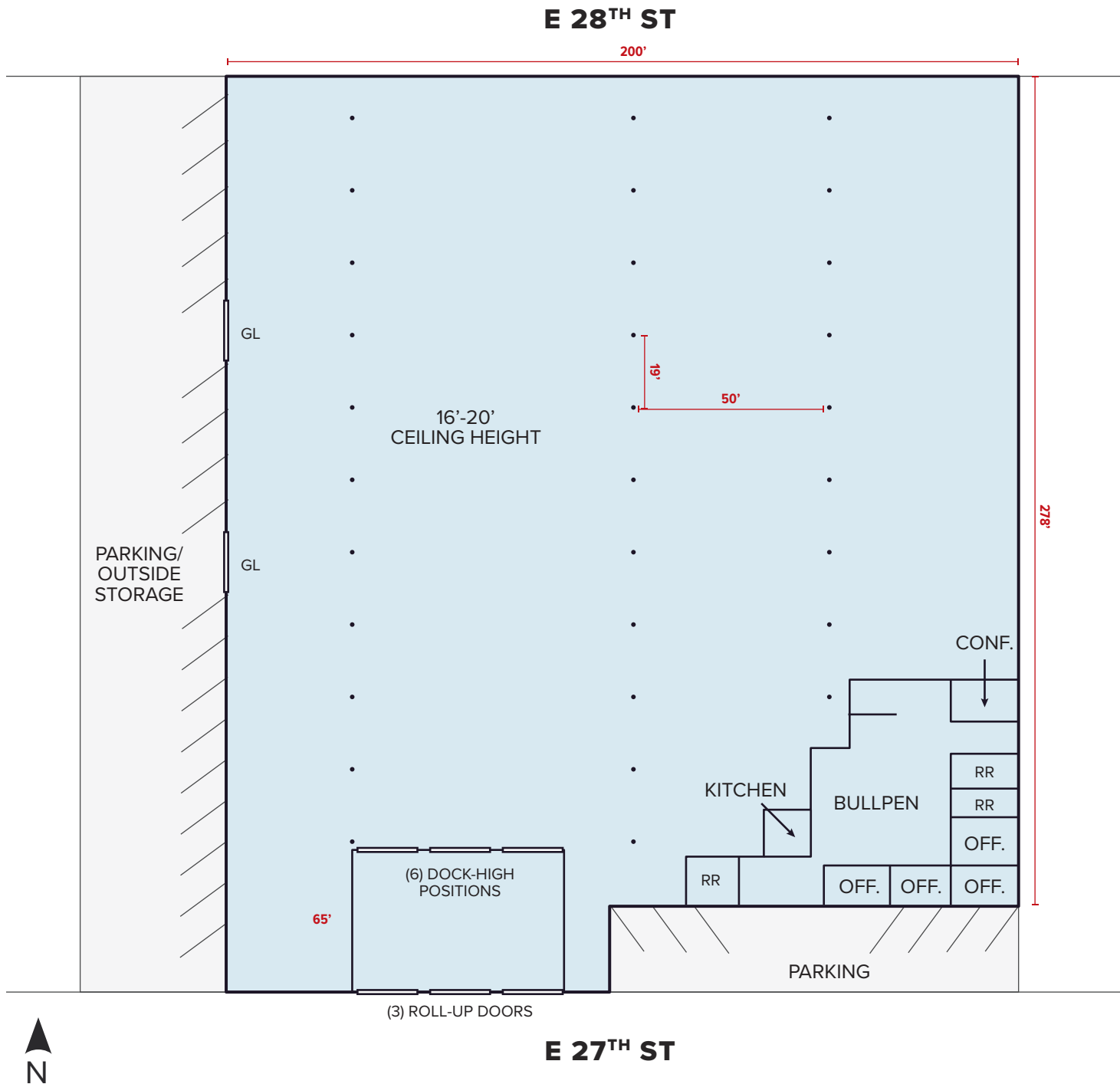
LEE-ASSOCIATES.COM

The information has been furnished from sources which we deem reliable, but for which we assume no liability. Any projections, opinions, assumptions or estimates used are for example only and do not represent the current or future performance of the property. Buyers should consult with their independent advisors to determine if the property is suitable for their needs.

FOR LEASE ±54,340 SQ. FT. INDUSTRIAL BUILDING

2454 E 27TH ST, VERNON, CA 90058

PROPERTY SITE PLAN



NOTE: Drawing not to scale. All measurements and sizes are approximate. Lessee to Verify

FOR MORE INFORMATION, PLEASE CONTACT

JEFFREY RINKOV

CEO | LIC NO 01238887

jrinkov@lee-associates.com

213.400.7941

SAM RINKOV

LIC NO 02132512

srinkov@lee-associates.com

818.324.4329

ETHAN RINKOV

LIC NO 02253349

erinkov@lee-associates.com

818.325.5175