

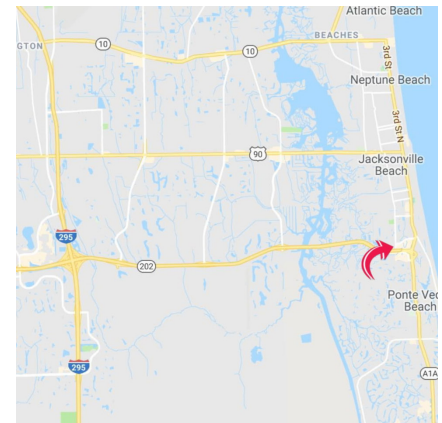


● **Available:**

-Suite A: \$1,250/Month

-Suite B: \$1,250/Month

- Suites are located on the second floor with stairwell access (no elevator). Office has been newly renovated throughout with floor-to-ceiling glass overlooking the adjacent lake
- Basic suite includes private office with keyed access, access to conference room, kitchen, janitorial, utilities, and high-speed internet service
- Located in a beautifully treed office park that provides ample parking
- Building is conveniently located on Marsh Landing Boulevard with easy access to J. Turner Butler Blvd as well as the surrounding Beaches communities and its numerous restaurants and shopping destinations



STRATEGIC SITES
Clifford Commercial

For Additional
Information Contact:

JC Clifford
jcc@strategicsites.com

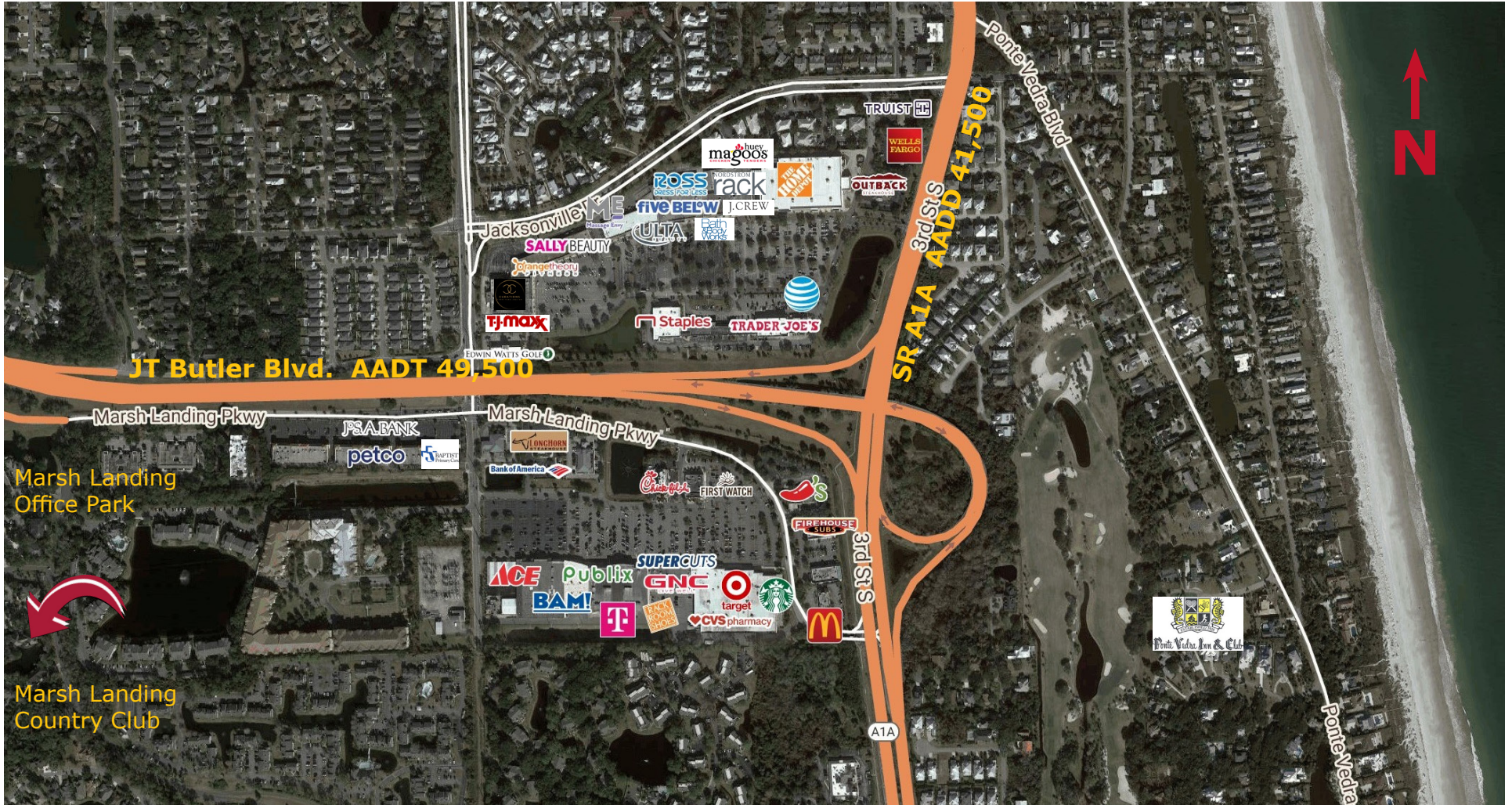
OR
Kate Clifford
kate@strategicsites.com

422 Jacksonville Drive, Jacksonville Beach, FL ~ 904-242-2828 ~ www.strategicsites.com

Client First through Service, Knowledge and Integrity

Notice of Disclaimer: Details contained herein are believed to be correct: the information is subject to errors, omissions, price changes, or withdrawal without notice

Aerial



422 Jacksonville Drive, Jacksonville Beach, FL ~ 904-242-2828 ~ www.strategicsites.com

Client First through Service, Knowledge and Integrity

Notice of Disclaimer: Details contained herein are believed to be correct: the information is subject to errors, omissions, price changes, or withdrawal without notice