

# Former Bank Branch

Walking Distance To Keuka Lake

3 Park Place  
Hammondsport, NY 14840

1,980 Square Feet With On-Site Parking On 0.36 Acres



## Offering Overview

CBRE Upstate NY is pleased to offer this 1,980 square foot retail property in the Village of Hammondsport. Currently built out for use as a bank branch, the property offers excellent street front exposure to Park Place, with a private parking lot for employees and customers. Situated directly across from Pulteney Square, this high traffic location is walking distance to the entire Village with neighboring developments including numerous restaurants and other retail services.

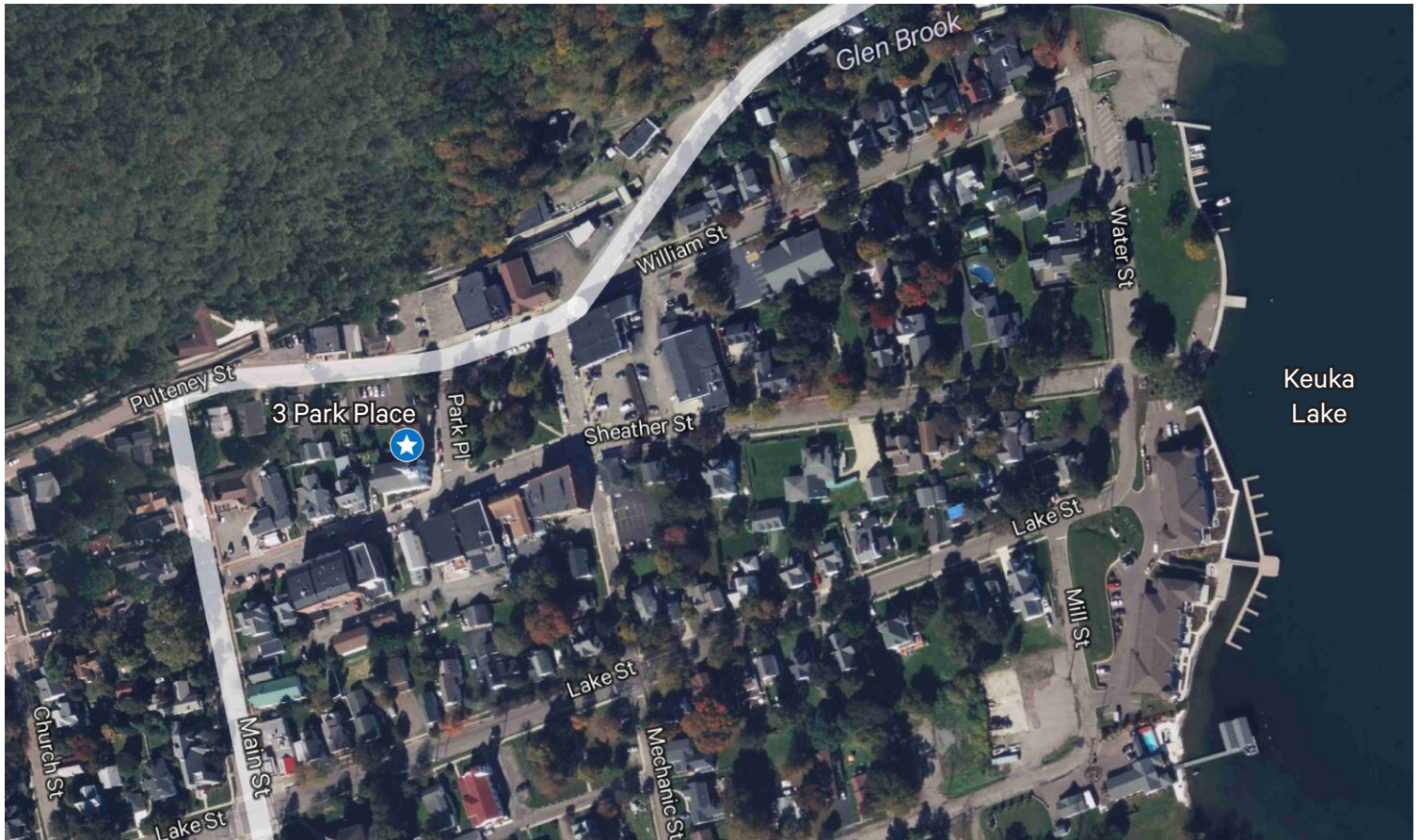
## Offering Details

- + Former Bank Branch
- + 1,980 Square Feet
- + 15 On-Site Parking Spaces
- + Sale Price: \$500,000

## Retail

3 Park Place | Hammondsport, NY 14840

For Sale



# Property Overview

- + 1,980 square feet
- + 0.36 acre lot
- + Tax parcel: 118.06-01-074.000
- + 15 space parking lot
- + Highly visible location
- + Walking distance to all points in the Village
- + Neighboring uses include: Hammondsport Chamber of Commerce and Municipal Offices, grocery, pharmacies, US Post Office, as well as numerous restaurants, and other service/retail establishments

## Contact Us

### Courtney Janto

+1 585 559 4150

courtney.janto@cbre-rochester.com

Licensed Real Estate Salesperson

### Andrew Gearhart

+1 585 784 3626

andrew.gearhart@cbre-rochester.com

Licensed Real Estate Salesperson

© 2026 CBRE Upstate NY, part of the CBRE Affiliate Network. All rights reserved. This information has been obtained from sources believed reliable, but has not been verified for accuracy or completeness. You should conduct a careful, independent investigation of the property and verify all information. Any reliance on this information is solely at your own risk. CBRE Upstate NY and the CBRE Upstate NY logo are service marks of CBRE Upstate NY. All other marks displayed on this document are the property of their respective owners, and the use of such logos does not imply any affiliation with or endorsement of CBRE Upstate NY. Photos herein are the property of their respective owners. Use of these images without the express written consent of the owner is prohibited.

### CBRE Upstate NY

1350 University Avenue

Rochester, NY 14607

+1 585 240 8080

[www.cbre.com/rochester](http://www.cbre.com/rochester)

# CBRE Upstate NY

PART OF THE AFFILIATE NETWORK